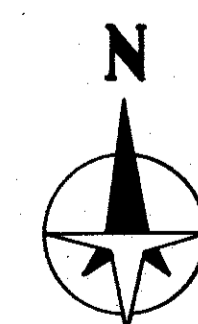
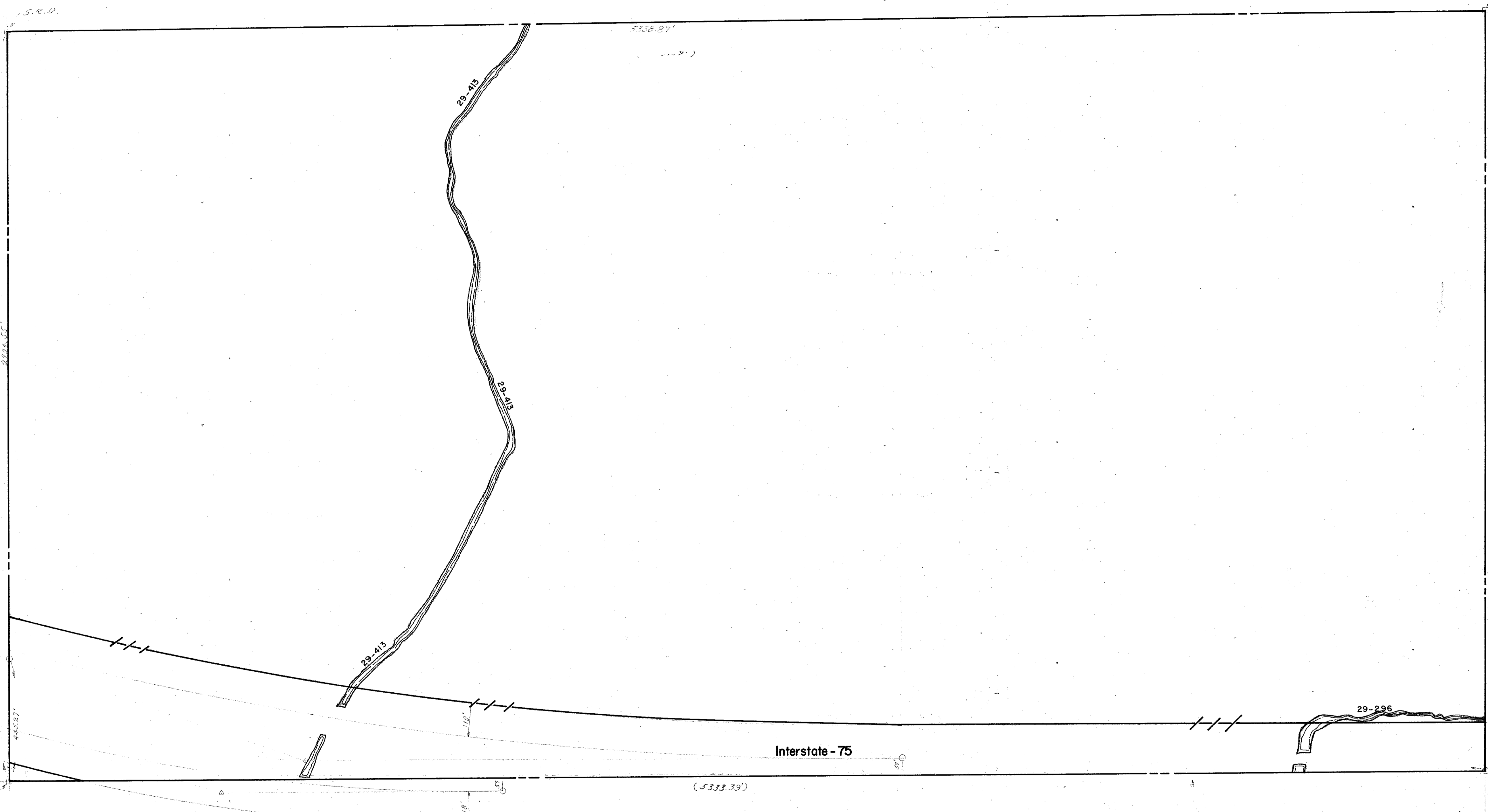


S. 1/2 2-39-20, Sht. No. 724

N. 1/2 10-39-20, Sht. No. 739

N. 1/2 12-39-20, Sht. No. 743

S. 1/2 11-39-20, Sht. No. 742



LEGEND:

- ▣ County Section Corner Monument
- ⊕ County Bench Mark
- Permanent Ref. Mon. for Subs.
- ① Subdivision Index Number

REVISIONS	
DATE	DESCRIPTION
SEPT. 1960	Added 1-75 R/W per DOT Report of
JAN. 1966	ADDED DRAINAGE DITCHES & NUMBERS

**SARASOTA COUNTY, FLORIDA**

Scale: 1" = 200' Date: May 1972

Drawn By: RJJ

**N. 1/2 Section 11  
Twp. 39 S. - Rge. 20 E.**

Sheet No. **741**

BRUNING 44-511 16772