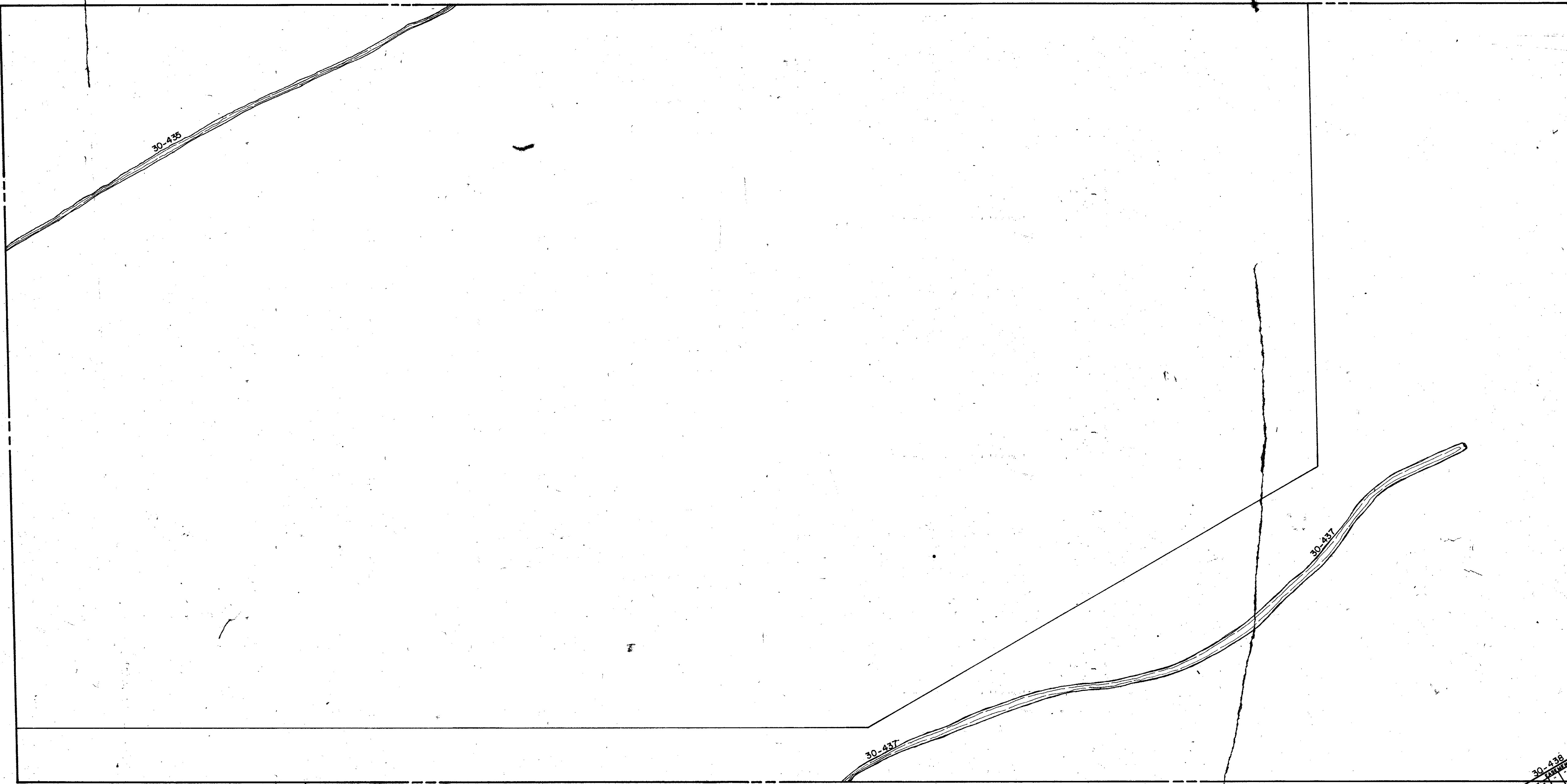


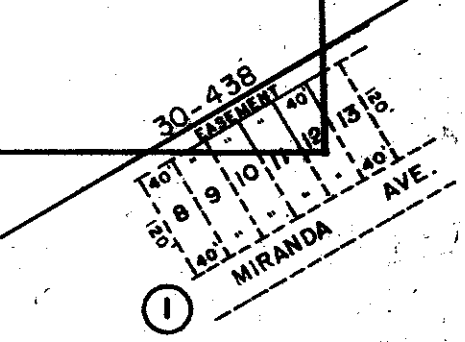
S1/2 23 - 39 - 20 SHT. NO. 766

N1/2 27 - 39 - 20 SHT. NO. 773

N1/2 26 - 39 - 20 SHT. NO. 769



S1/2 26 - 39 - 20 SHT. NO. 772



SUBDIVISION INDEX

No.	Name	Date
1	WARM MINERAL SPRINGS UNIT NO. 56	8/13

- LEGEND**
- PERM. REF. MON. (for Subs.)
 - CONC. MON.
 - IRON PIPE
 - CO. SEC. COR. MON.

ALTERATIONS	
DATE	DESCRIPTION
SEPT. 1960	REVISIONS AND ADDITIONS
JULY 1966	REDRAWN
DEC. 1962	CORRECTED TITLE BLOCK
FEB. 1966	ADDED DRAINAGE DITCH & NUMBERS
JULY 1968	ADDED ORIGINAL SUBDIVISION BOUNDARY

SARASOTA COUNTY FLORIDA
 SCALE: 1" = 200'
 JULY 1966

**N 1/2 SECTION 26
 TWP 39 S. RGE. 20 E.**

SHT. NO.
771

