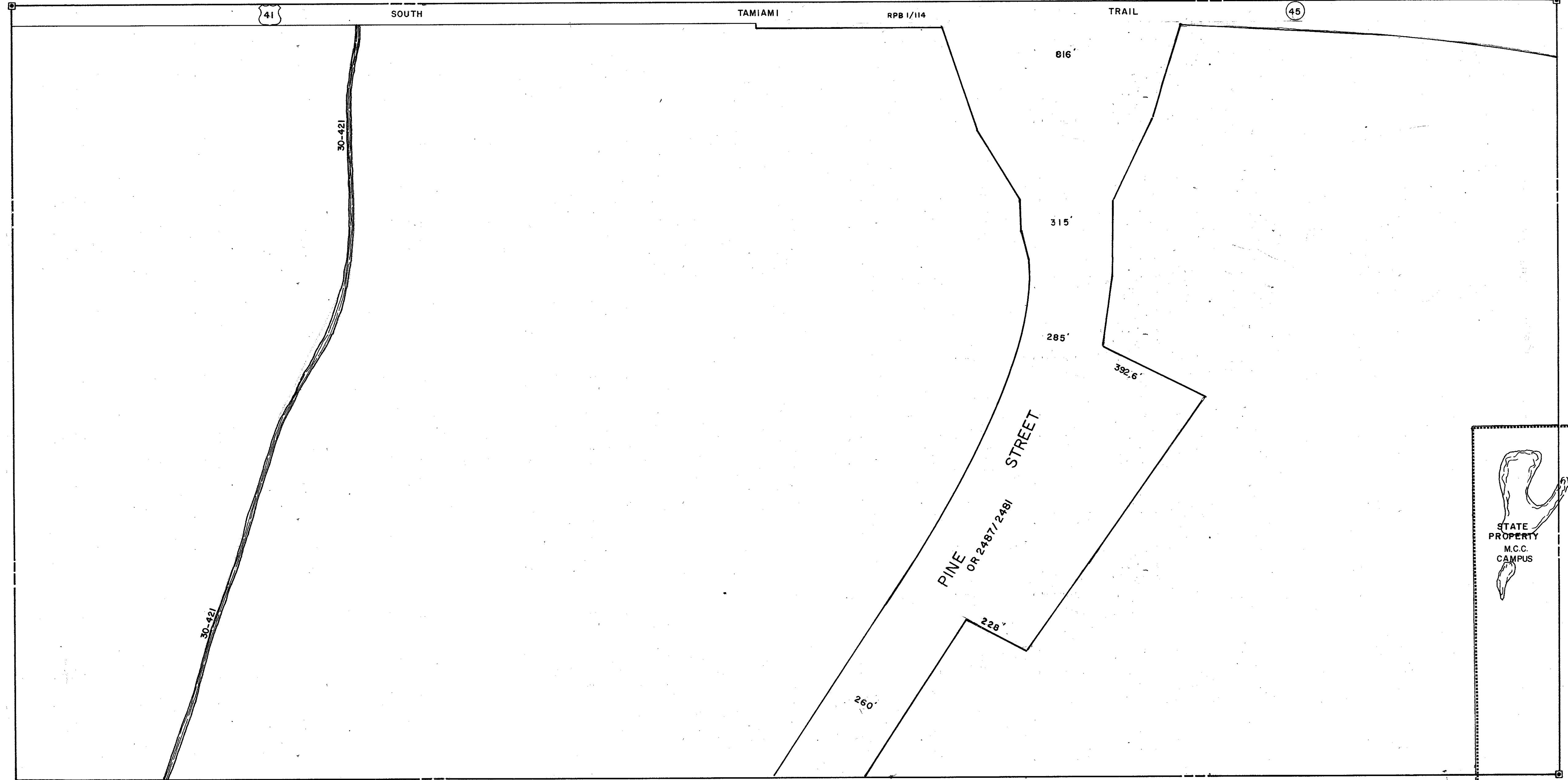


N 1/2 32 - T 39 S - R 20 E - SHT. 778

N 1/2 32 - T 39 S - R 20 E - SHT. 778

SEC. COR. 1185

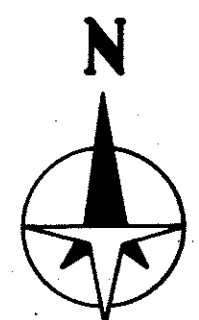
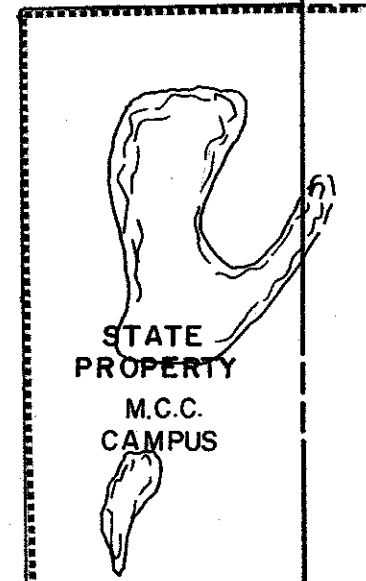
SEC. COR. 1306



S 1/2 32 - T 39 S - R 20 E - SHT. 784

SEC. COR. 1307

N 1/2 33 - T 39 S - R 20 E - SHT. 785



LEGEND:

- County Section Corner Monument
- ⊠ County Bench Mark
- Permanent Ref. Mon. for Subs.
- ① Subdivision Index Number

REVISIONS	
DATE	DESCRIPTION
FEB. 1988	ADDED DRAINAGE DITCH & NUMBERS
JAN. 1993	ADDED STATE PROPERTY - M.C.C. CAMPUS
APRIL 1998	ADDED PINE STREET

SARASOTA COUNTY, FLORIDA

Scale: 1" = 200' Date: 7-7-87
Drawn By: M. W. L.

N 1/2 SECTION 32
TWP. 39 S RGE. 20 E.

Sheet No.

783