

N 1/2 34-39-20, Sht. No. 787

SEC. COR. 1429

S 1/2 33-39-20, Sht. No. 786

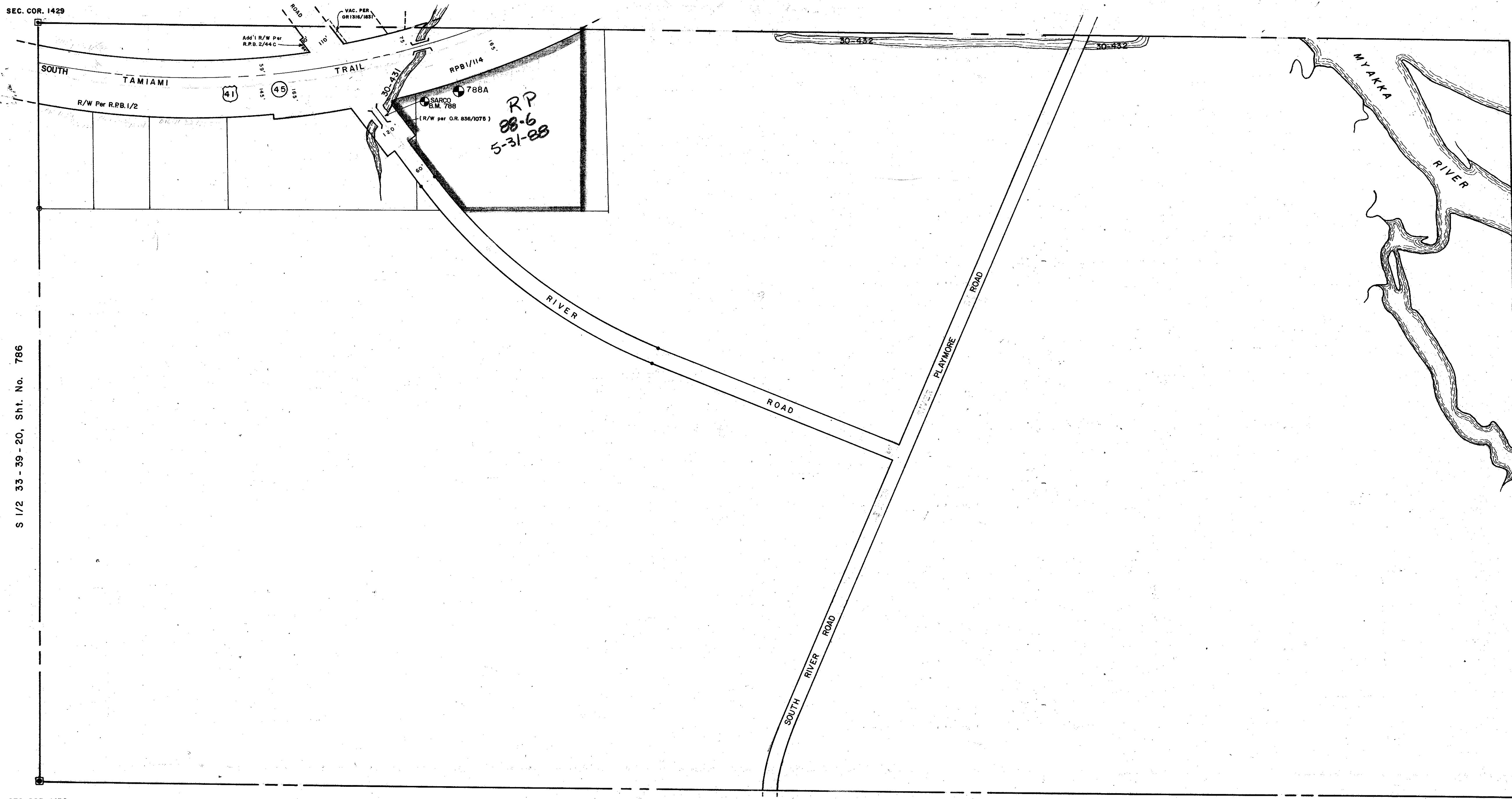
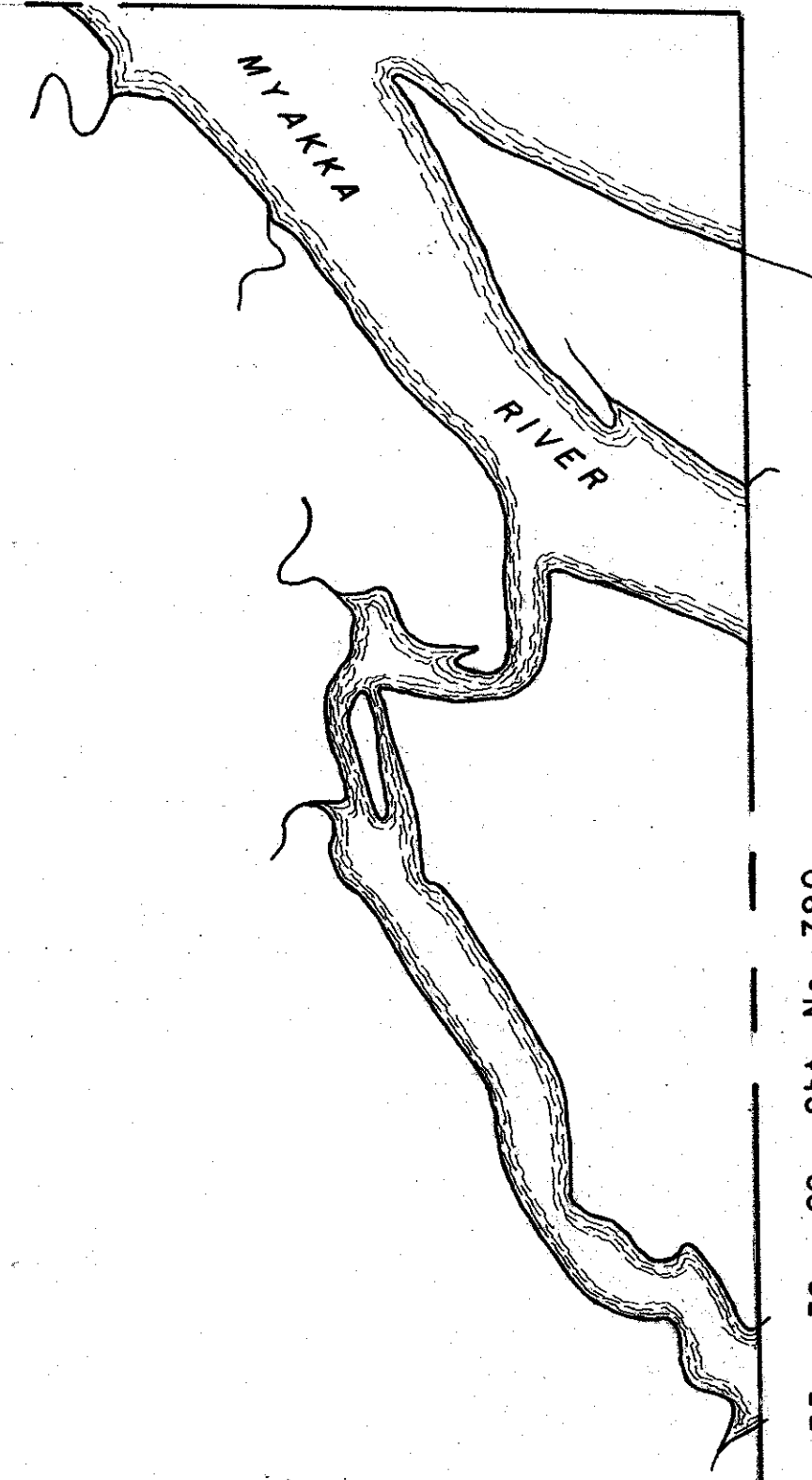
SEC. COR. 1430

N 1/2 3-40-20, Sht. No. 797

SEC. COR. 1549



S 1/2 35-39-20, Sht. No. 790



RP
88-6
5-31-88

- LEGEND**
- ☐ Section Corner Monument
 - Permanent Reference Monument
 - Reference Point for Subdivisions
 - ① Subdivision Index Number
 - ▨ County Property
 - ▨ Drainage

REVISIONS	
DATE	DESCRIPTION
JAN 1979	Changed SR 777 to SOUTH RIVER ROAD
APR 1982	Added Section Corner Number
JUN 1985	Added R/W Per R.P.B. 2/44C
AUG 1985	Portion of RIVER RD. per OR 836/1075
AUG 1985	D.O.T. vacated @ RIVER RD. - US 41 intersect per OR 1316/1831
DEC 1985	Added SARCO BENCH MARK 788 Per D.O.T.
FEB 1986	ADDED DRAINAGE NUMBERS
JULY 1991	CORRECTED ROAD NAMES
JUNE 1995	REMOVED 60' R/W RIVER RD

SARASOTA COUNTY, FLORIDA

Scale: 1" = 200' Date: February, 1976
Drawn By: D. G. Nichols

S 1/2 Section 34
Twp. 39 S. Rge. 20 E.

Sheet No.

788

BRUNING 44-511 16772