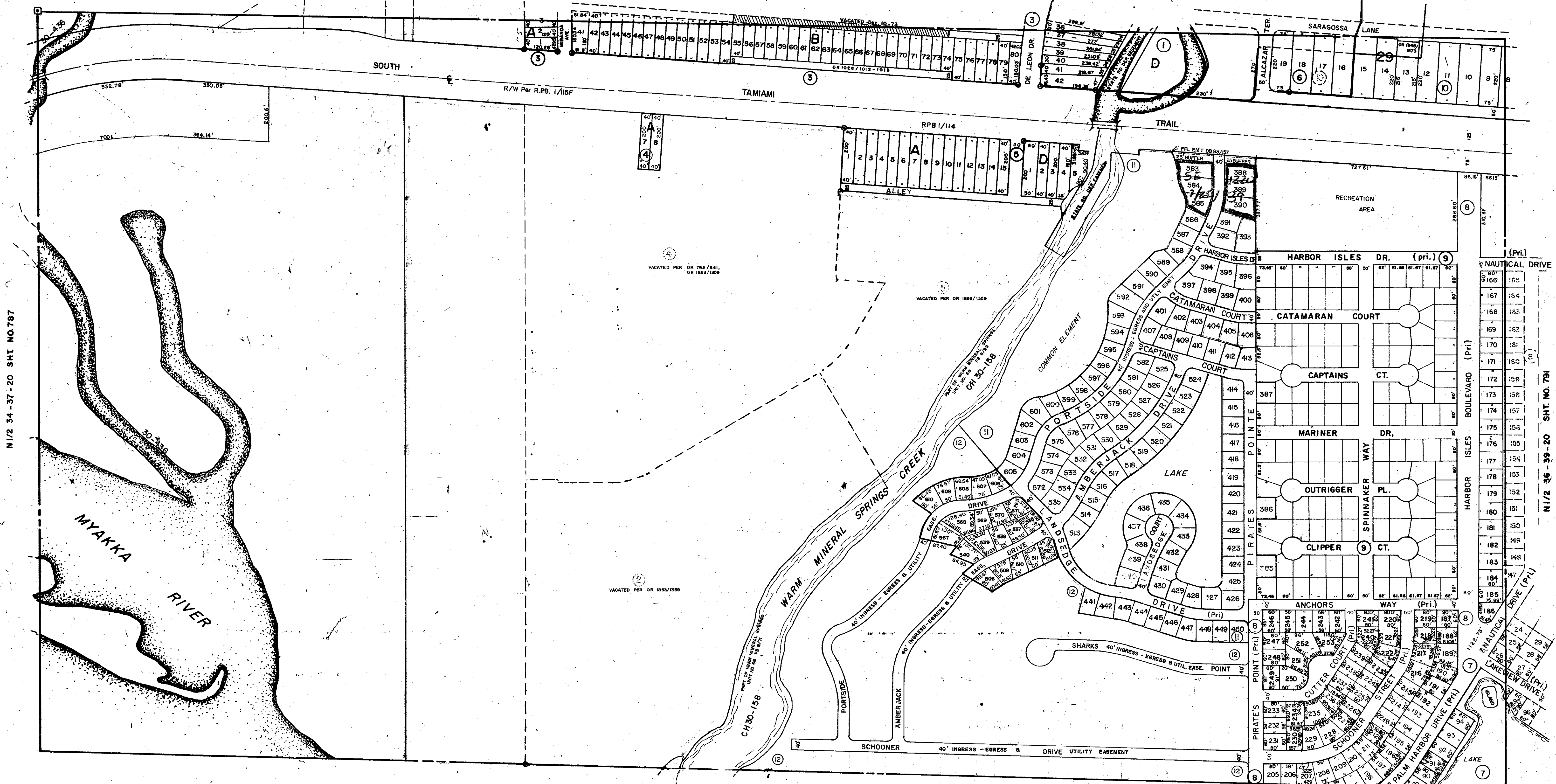


SEC. COR. 1547

S1/2 26-39-20 SHT. NO. 772



N1/2 34-37-20 SHT. NO. 787

N1/2 36-39-20 SHT. NO. 791

**SUBDIVISION INDEX**

No.	Name	Date
1	WARM MINERAL SPRINGS UNIT NO. 70	8/100
2	" " " " " " " " " "	8/71
3	" " " " " " " " " "	8/39
4	" " " " " " " " " "	8/70
5	" " " " " " " " " "	8/99
6	" " " " " " " " " "	8/99
7	" " " " " " " " " "	10/23-23A
8	HARBOR ISLES CONDOMINIUM SECT. I	C.B. 14/2 A-D
9	HARBOR ISLES CONDOMINIUM SECT. II	C.B. 15/42 A-C
10	HARBOR ISLES CONDO., SEC. III	C.B. 20/16, C.B. 21/19
11	WARM MINERAL SPRINGS UNIT NO. 71	P.B. 8/101
12	HARBOR ISLES CONDOMINIUM SECT. IV	C.B. 27/48 A-E
13	HARBOR ISLES CONDOMINIUM PHASE V	C.B. 29/37-37C

S1/2 34-39-20 SHT. NO. 790

- LEGEND**
- Indicates Original Subdivision Bdy.
  - Section Corner Monument
  - Permanent Reference Monument
  - Reference Point for Subdivisions
  - ① Subdivision Index Number
  - Drainage
  - ▨ County Property

DATE	DESCRIPTION	BY
JUN 1992	ADDED HARBOR ISLES CONDO. PHASE V CB 27/37-37	BY
MAR 1989	ADDED HARBOR ISLES CONDOMINIUM SEC. I CB 27/48	SCB
FEB 1989	ADDED WARM MINERAL SPRINGS UNIT NO. 70	WJM
FEB 1989	ADDED WARM MINERAL SPRINGS UNIT NO. 71	WJM
MAY 1988	ADDED WARM MINERAL SPRINGS UNIT NO. 72	WJM
MAY 1988	ADDED WARM MINERAL SPRINGS UNIT NO. 73	WJM
MAY 1988	ADDED WARM MINERAL SPRINGS UNIT NO. 74	WJM
MAY 1988	ADDED WARM MINERAL SPRINGS UNIT NO. 75	WJM
MAY 1988	ADDED WARM MINERAL SPRINGS UNIT NO. 76	WJM
MAY 1988	ADDED WARM MINERAL SPRINGS UNIT NO. 77	WJM
MAY 1988	ADDED WARM MINERAL SPRINGS UNIT NO. 78	WJM
MAY 1988	ADDED WARM MINERAL SPRINGS UNIT NO. 79	WJM
MAY 1988	ADDED WARM MINERAL SPRINGS UNIT NO. 80	WJM
MAY 1988	ADDED WARM MINERAL SPRINGS UNIT NO. 81	WJM
MAY 1988	ADDED WARM MINERAL SPRINGS UNIT NO. 82	WJM
MAY 1988	ADDED WARM MINERAL SPRINGS UNIT NO. 83	WJM
MAY 1988	ADDED WARM MINERAL SPRINGS UNIT NO. 84	WJM
MAY 1988	ADDED WARM MINERAL SPRINGS UNIT NO. 85	WJM
MAY 1988	ADDED WARM MINERAL SPRINGS UNIT NO. 86	WJM
MAY 1988	ADDED WARM MINERAL SPRINGS UNIT NO. 87	WJM
MAY 1988	ADDED WARM MINERAL SPRINGS UNIT NO. 88	WJM
MAY 1988	ADDED WARM MINERAL SPRINGS UNIT NO. 89	WJM
MAY 1988	ADDED WARM MINERAL SPRINGS UNIT NO. 90	WJM

SARASOTA COUNTY FLORIDA  
SCALE: 1" = 200'  
JULY 1966

N 1/2 SECTION 35  
TWP. 39 S. RGE. 20 E.

SHT. NO.  
789

