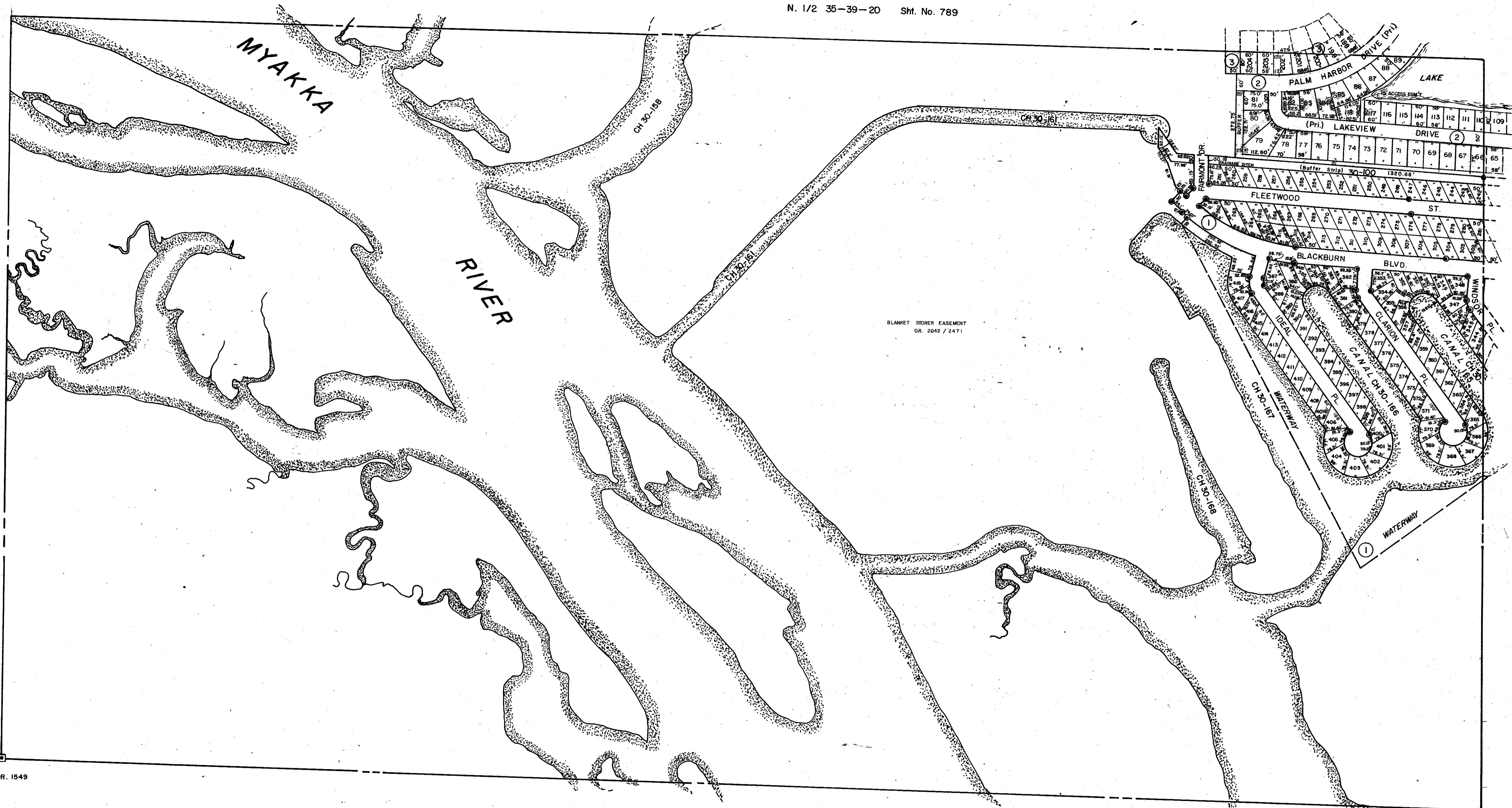


N. 1/2 35-39-20 Sht. No. 789

S. 1/2 34-39-20 Sht. No. 788

S. 1/2 36-39-20 Sht. No. 792



SEC. COR. 1549

N. 1/2 2-40-20 Sht. No. 796

SUBDIVISION INDEX

- |                                 |        |                |
|---------------------------------|--------|----------------|
| 1. Trailer Acres                | Unit 3 | 17/43 & 43A    |
| 2. HARBOR ISLES CONDO. SECT. I  |        | C.B. 14/2 A-D  |
| 3. HARBOR ISLES CONDO. SECT. II |        | C.B. 15/42 A-C |

LEGEND:

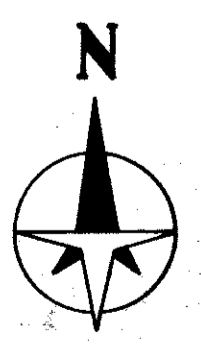
- ▣ County Section Corner Monument
- Permanent Reference Monument
- Reference Point for Subdivisions
- ① Subdivision Index Number
- ▬ Drainage

REVISIONS	
DATE	DESCRIPTION
MAY 1980	ADDED HARBOR ISLES CONDOMINIUM SECTION I
FEB. 1983	SECTION CORNER - DWY'S
FEB. 1989	ADDED DRAINAGE NUMBERS

SARASOTA COUNTY,  
FLORIDA

Scale: 1" = 200' Date: Feb. 1976

Redrawn By: S.K.B.



Sheet No.

790

S 1/2 Section 35  
Twp. 39 S. Rge. 20 E.

BRUNING 44-511 16772