

SEC. COR. 1314

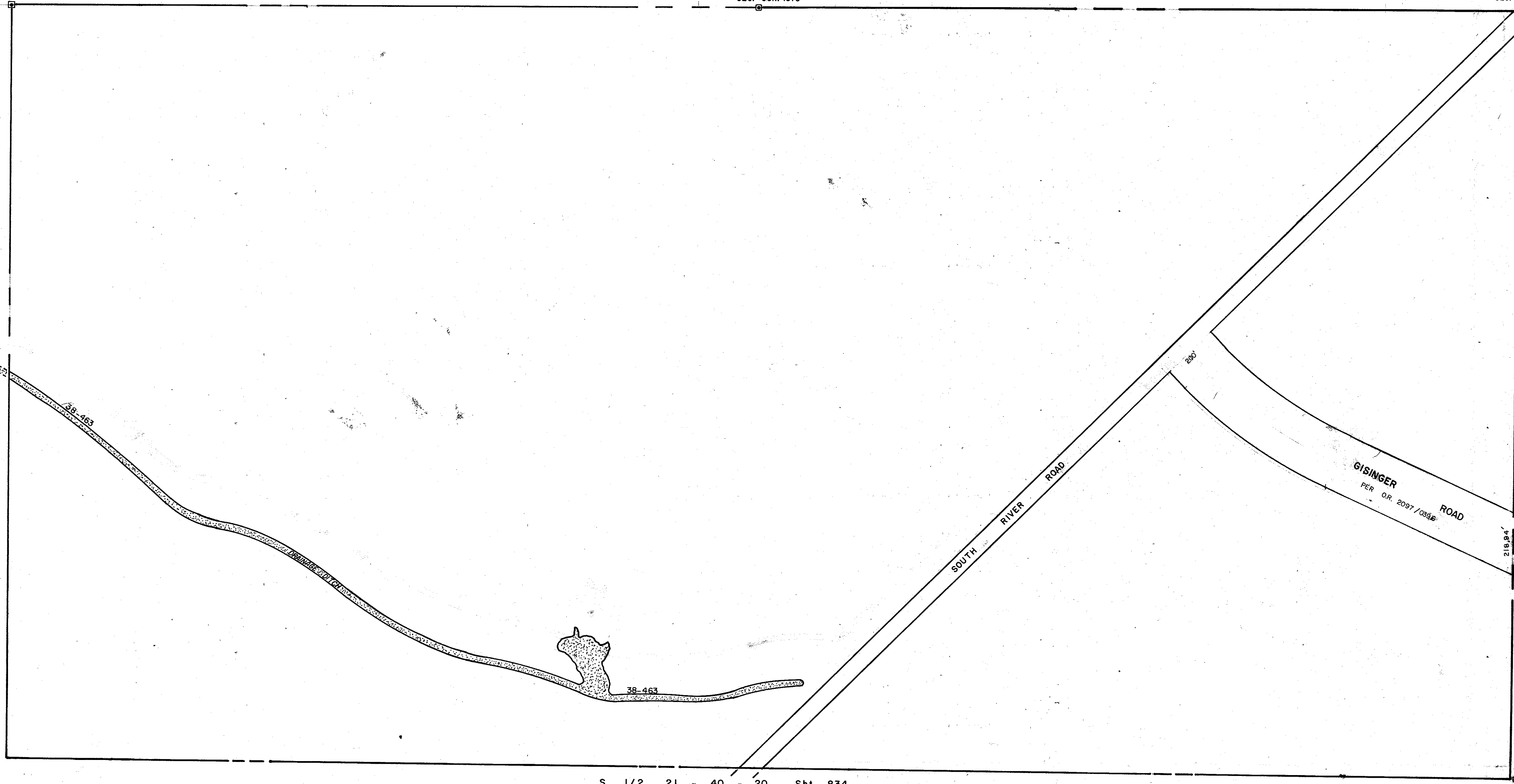
S 1/2 16 - 40 - 20, Sht. No. 824
SEC. COR. 1375

SEC. COR. 1436

N 1/2 20 - 40 - 20, Sht. No. 831

N 1/2 22 - 40 - 20, Sht. No. 835

S 1/2 21 - 40 - 20, Sht. 834



LEGEND

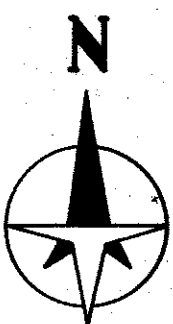
- Section Corner Monument (New Numbers)
- Permanent Reference Monument
- Reference Point for Subdivisions
- ① Subdivision Index Number
- ▨ County Property
- ▨ Drainage

| REVISIONS | |
|-----------|--|
| DATE | DESCRIPTION |
| JAN 1979 | Changed SE 777 to SOUTH RIVER ROAD |
| DEC 1981 | Changed South Boundary to match Map 834 |
| JUN 1982 | Revised SOUTH RIVER ROAD |
| NOV 1985 | EXTENDED THE EASTERLY SECTION LINE, ADJUSTED & CONFORMED SOUTH RIVER ROAD & DRAINAGE DITCH TO AERIAL |
| FEB 1985 | ADDED DRAINAGE NUMBERS |
| FEB 1985 | ADDED GISINGER ROAD PER O.R. 2097/0397 |

SARASOTA COUNTY, FLORIDA

Scale: 1" = 200' Date: March 1976

Drawn By: D. G. Nichols



N 1/2 Section 21
Twp. 40S Rge. 20E.

Sheet No.

833