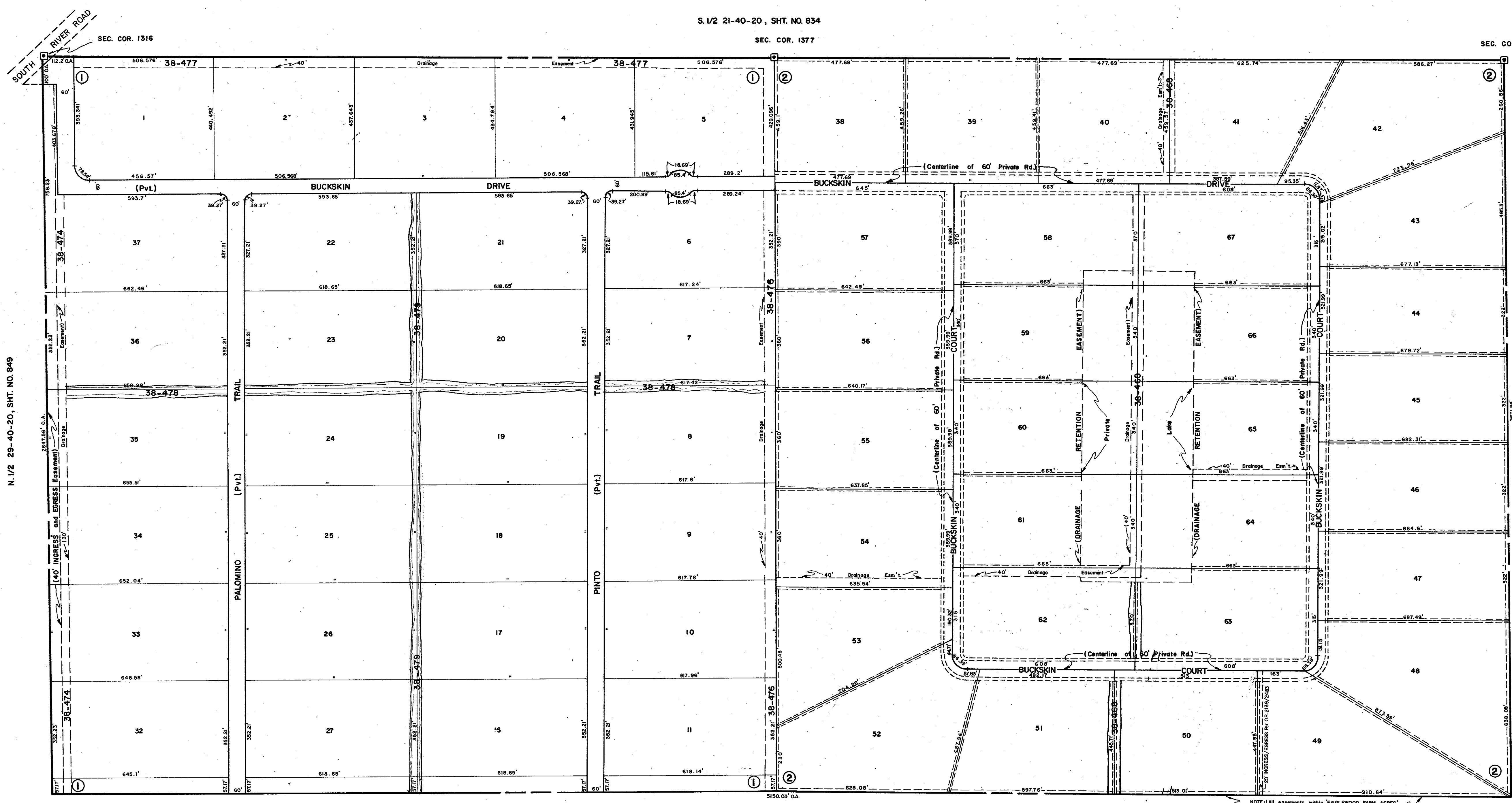


S. 1/2 21-40-20, SHT. NO. 834

SEC. COR. 1377

SEC. COR. 1438



N. 1/2 28-40-20, SHT. NO. 849

N. 1/2 27-40-20, SHT. NO. 845

S. 1/2 28-40-20, SHT. NO. 848

NOTE: (All easements within ENGLEWOOD FARM ACRES, Unit 2, are 10' wide unless otherwise noted.)

### SUBDIVISION INDEX

NO.	NAME	
1.	ENGLEWOOD FARM ACRES SUBDIVISION	PB. 22/28 and 28A.
2.	ENGLEWOOD FARM ACRES, UNIT 2.	PB. 27/14 and 14A.

### LEGEND:

- ⊠ County Section Corner Monument
- ⊕ County Bench Mark
- Permanent Ref. Mon. for Subs.
- ① Subdivision Index Number

REVISIONS	
DATE	DESCRIPTION
August, 1980	Redrawn and added ENGLEWOOD FARM ACRES
FEB. 1985	SECTION CORNERS - DNR
DEC. 1988	CORRECTED S.A. 777 TO SOUTH RIVER ROAD
FEB. 1989	ADDED DRAINAGE DITCH NUMBERS
AUG. 1989	ADDED 20' INGRESS/EGRESS PER OR. 2139/2463

## SARASOTA COUNTY, FLORIDA

Scale: 1" = 200' Date: August, 1980

Drawn By: Steve Burkholder

# N. 1/2 SECTION 28, TWP. 40 S., RGE. 20 E.

Sheet No.

847

