

SEC. COR. 1195

S 1/2 20-40-20 SHT. NO. 832

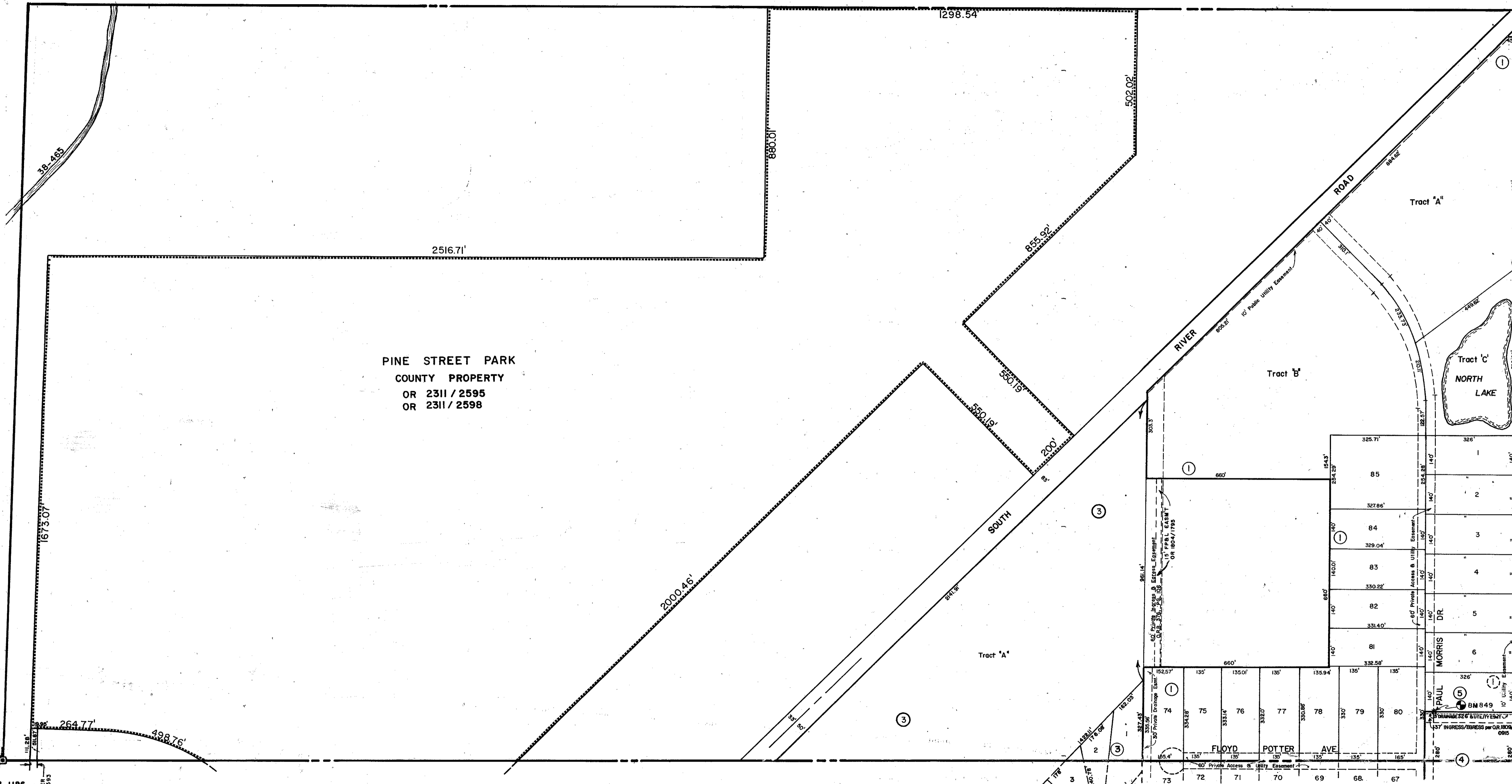
SEC. COR. 1316

N 1/2 30-14-20 SHT. 851

N 1/2 28-40-20 SHT. NO. 847

SEC. COR. 1196

S 1/2 29-40-20 SHT. NO. 850



SUBDIVISION INDEX

NO.	NAME	PB./PG.
1	MORRIS INDUSTRIAL PARK	28/18
2	ENGLEWOOD FARM ACRES SUBDIVISION	22/28
3	INTERSTATE INDUSTRIAL PARK	29/39B
4	BRIGHTSTAR INDUSTRIAL, Condo. C.B. 24/49'	
5	STAHL CONDOMINIUM C.B. 28/31	

LEGEND:

- ☐ County Section Corner Monument
- ⊕ County Bench Mark
- ⊙ Permanent Ref. Mon. for Subs.
- ① Subdivision Index Number

REVISIONS		
DATE	DESCRIPTION	BY
NOV. 1981	REDRAWN	GMT
NOV. 1984	Added MORRIS INDUSTRIAL PARK	GMT
JUNE 1985	Added INTERSTATE INDUSTRIAL PARK	SMB
OCT. 1985	Added BRIGHTSTAR INDUSTRIAL, Condo. C.B. 24/49'	PJB
DEC. 1985	Added 37' INGRESS/EGRESS per O.R. 1806/2085, 1018 MORRIS INDUSTRIAL PARK	PJB
JAN. 1986	1" P.F. ELL. EASEMENT PER O.R. 1804/1795	84.8
FEB. 1986	ADDED DRAINAGE DITCH & NUMBERS	
FEB. 1990	ADDED STAHL CONDOMINIUM C.B. 28/31	KLP
FEB. 1990	ADDED BM 849	RJJ
DEC. 1991	ADDED O.R. 2311/2585, 2268 OR 2310/593	BY

SARASOTA COUNTY, FLORIDA

Scale: 1" = 200' Date: 23NOV81
Drawn By: G.M.T.

**N 1/2 SECTION 29
TWP. 40 S. RGE. 20 E.**

Sheet No.

849

