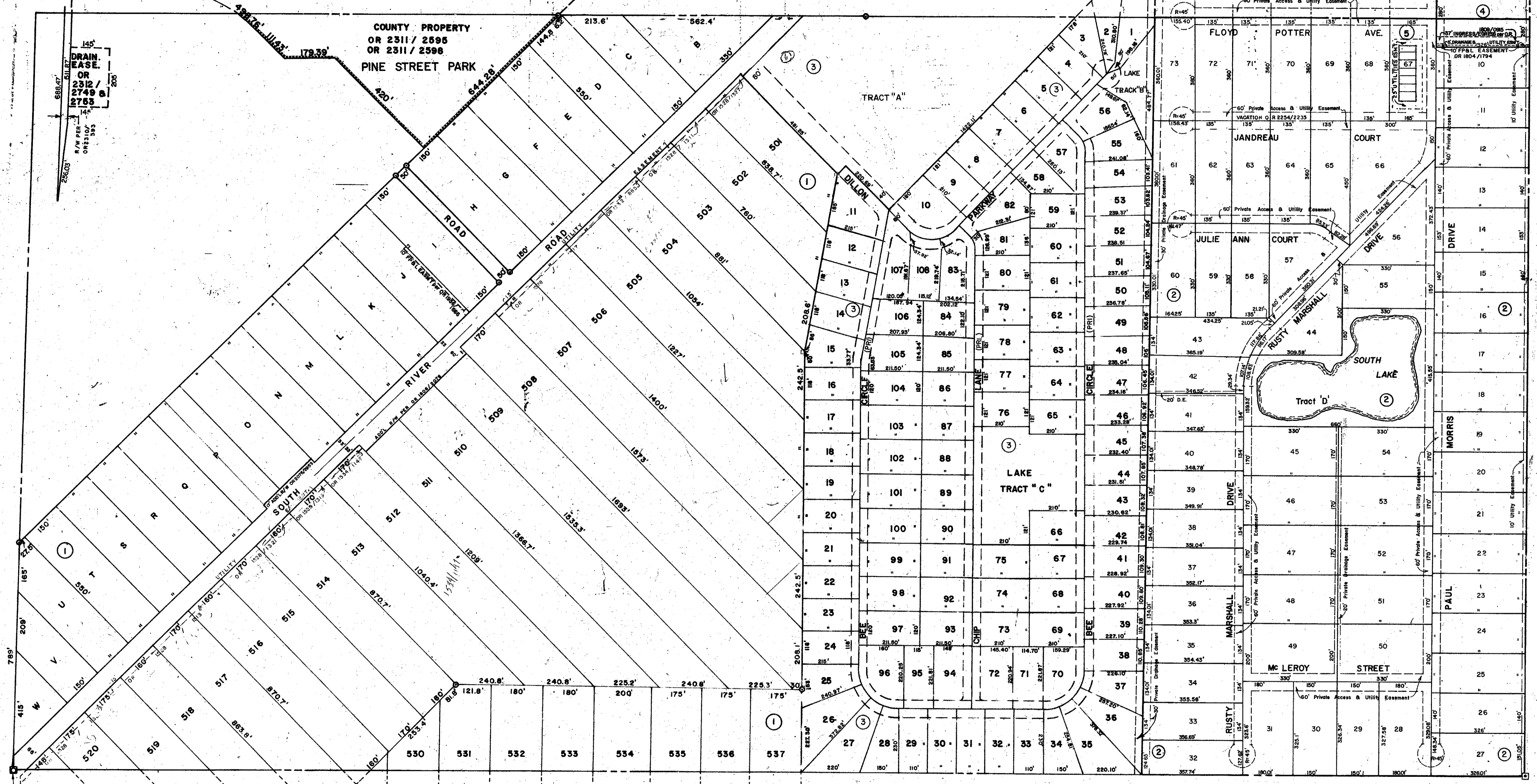


N 1/2 29-40-20 SHT. NO. 849



S 1/2 30-40-20 SHT. NO. 852

S 1/2 28-40-20 SHT. NO. 848

CO. SEC. COR. MON. SHT. NO. 1197

N 1/2 32-40-20 SHT. NO. 855

CO. SEC. COR. MON. SHT. NO. 1316

SUBDIVISION INDEX

No.	Name
1	ENGLEWOOD GARDENS - UNIT 6, PB. 4/74 6. 75
2	MORRIS INDUSTRIAL PARK 28/18
3	INTERSTATE INDUSTRIAL PARK 29/39B
4	BRIGHTSTAR INDUSTRIAL, Condo. CB. 24/49
5	KEYSTONE SQUARE CONDO C.B. 29/36

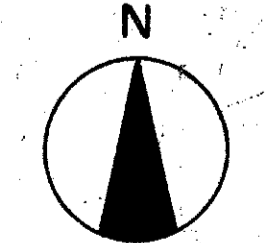
LEGEND

- PERM. REF. MON. (for Subs.)
- CONC. MON.
- ⊙ IRON PIPE
- ⊠ CO. SEC. COR. MON. (New No's.)

DATE	DESCRIPTION	BY
DEC. 1992	ADDED OR 2311/2595, 2598, 2312/2749, 2753, 2310/595	B.Y.
NOV 1966	REDRAWN	JWE
JAN. 1979	Changed SR 777 to SOUTH RIVER ROAD	GHT
NOV. 1981	Added MORRIS INDUSTRIAL PARK	JNY
SEP. 1983	Added RIVER RD. R/W per OR 1606/2076	SHB
SEP. 1983	Added INTERSTATE INDUSTRIAL PARK	PUB
OCT. 1985	Added BRIGHTSTAR INDUSTRIAL, Condo. CB. 24/49	PUB
DEC. 1985	Added INTERSTATE INDUSTRIAL PARK, per O.R. 1606/2076, per 9 MORRIS INDUSTRIAL PARK	PUB
JAN. 1986	Added OFFICIAL EASEMENT per OR 1604/1794	PUB
JAN. 1986	Added OFFICIAL EASEMENT per OR 1604/1794	PUB
NOV. 1986	WARRANTY DEED W. RIVER TO SARCO BY R/W per OR 2075/2953	SCB
NOV. 1986	Added VACATION TO RUSTY MARSHAL OR 2254/2235	SCB
MAY 1981	Added KEYSTONE SQUARE CONDO	JWE

SARASOTA COUNTY FLORIDA  
SCALE: 1" = 200'  
NOV. 1966

S 1/2 SECTION 29  
TWP. 40 S. RGE. 20 E.



SHT. NO.  
850