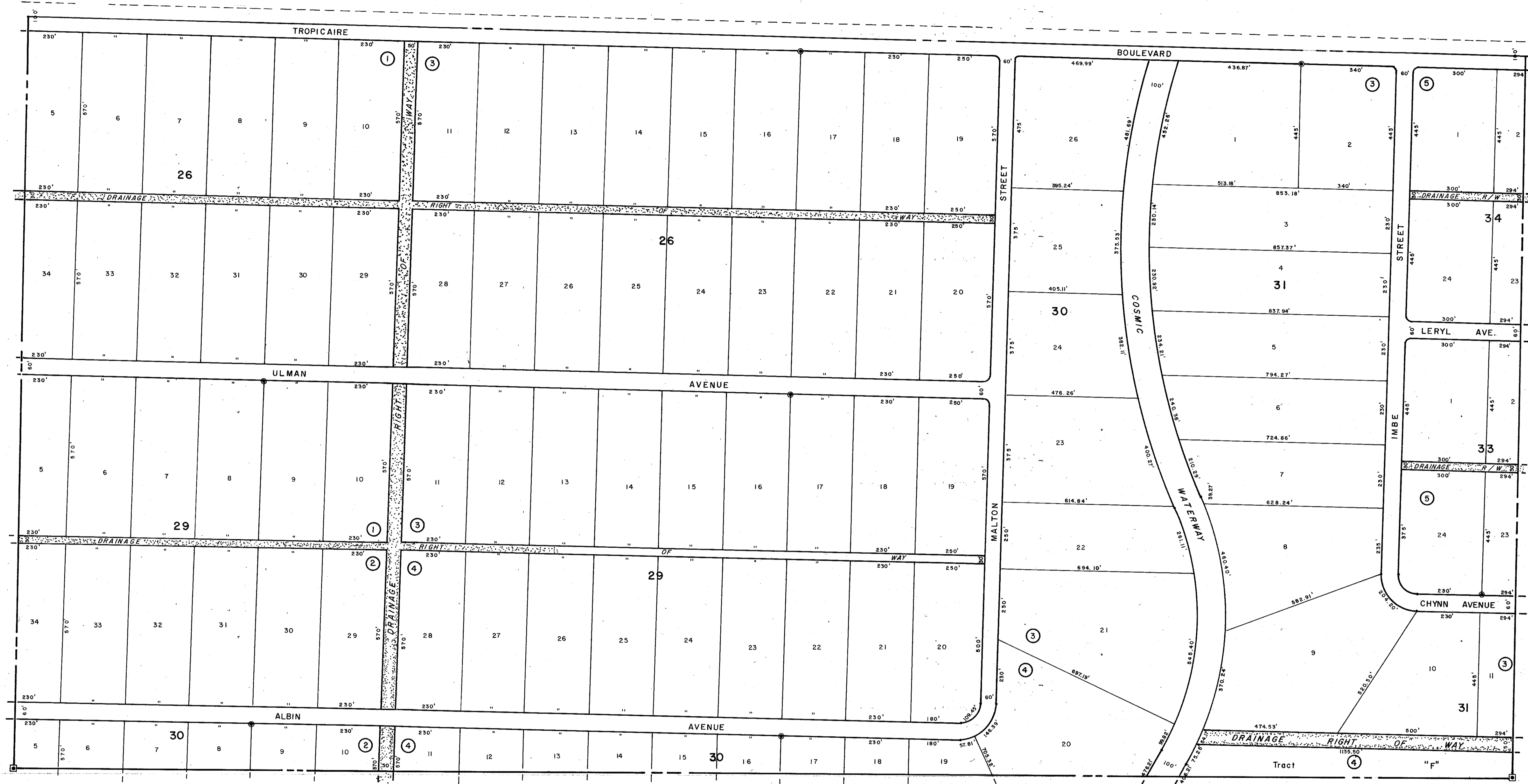


S 1/2 3-39-21, Sht. No. 942

S 1/2 1-39-21, Sht. No. 938



N 1/2 11-39-21, Sht. No. 957

SUBDIVISION INDEX

1.	North Port Charlotte Estates, 2nd. Add.	19/44 D
2.	" " " " " "	19/44 E
3.	" " " " " "	19/44 G
4.	" " " " " "	19/44 H
5.	" " " " " "	19/44 K

LEGEND

- ▣ Section Corner Monument
- Permanent Reference Monument
- Reference Point for Subdivisions
- ① Subdivision Index Number
- Drainage

REVISIONS	
DATE	DESCRIPTION

SARASOTA COUNTY, FLORIDA

Scale: 1" = 200' Date: December, 1974
Drawn By: J.M.M.

**S. 1/2 Section 2
Twp. 39 S.-Rge. 21 E.**

Sheet No.

940

