

NOTE: ζ of Clark Road is not on land line, see R.B.1 Pgs 45-48

CO. SEC. COR. MON. SHT. NO. 303

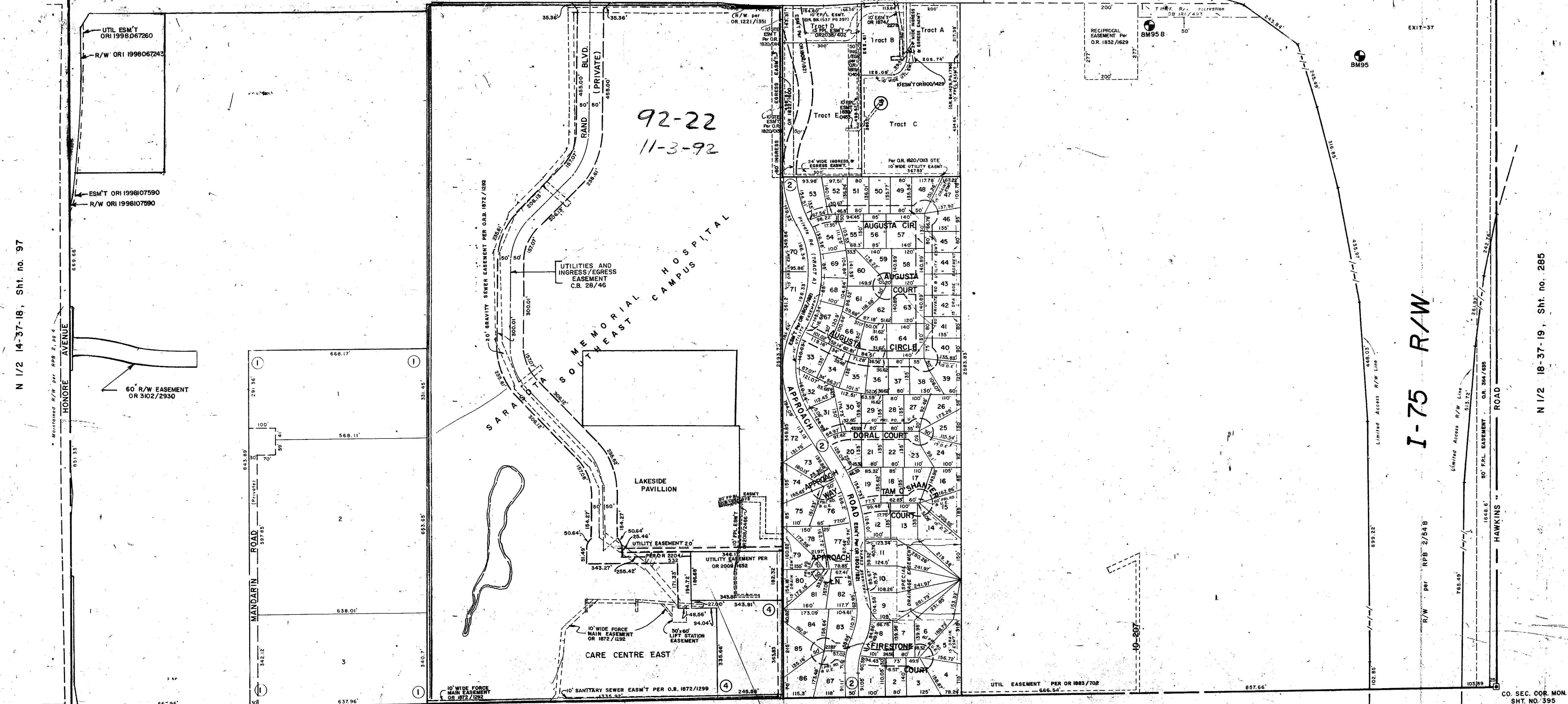
CO. SEC. COR. MON. SHT. NO. 341

CO. SEC. COR. MON. SHT. NO. 394

CLARK ROAD

Access Road 14 Vacated per OR 1521/656

(UNDER)



92-22
11-3-92

I-75 R/W

N 1/2 18-37-19, Sht. no. 285

N 1/2 14-37-18, Sht. no. 97

CO. SEC. COR. MON. SHT. NO. 304

CO. SEC. COR. MON. SHT. NO. 395

SUBDIVISION INDEX

No.	Name	
1.	HIDDEN ACRES SUBDIVISION	22 / 42
2.	SUNRISE GOLF CLUB ESTATES	26 / 35-35C
3.	SUNRISE LAND CONDO.	C.B. 22 / 33, 24 / 24-24B
4.	CHC OFFICE CONDO.	C.B. 28 / 46

DATE	DESCRIPTION	BY
JAN 1992	REMOVED 50' WIDE EASEMENT OR 564/235	RS
JULY 1990	ADDED CHC OFFICE CONDO C.B. 28/46	RS
AUG 1989	ADDED UTILITY EASEMENT OR 28/46	RS
AUG 1989	ADDED UTILITY EASEMENT OR 204/532	RS
AUG 1989	ADDED UTILITY EASEMENT OR 204/532	RS
AUG 1989	PARTIAL RELEASE OF ESM T OR 1830/432-433 Per OR 2043/2040	RS
FEB 1988	ADDED UTILITY EASEMENT PER OR 2009/1652	RS
FEB 1988	ADDED UTILITY EASEMENT PER OR 2009/1652	RS
FEB 1988	ADDED DRAINAGE DITCH NUMBER	RS
FEB 1988	ADDED UTILITY EASEMENT PER OR 1831/672	RS
JAN 1987	ADDED UTILITY EASEMENT PER OR 1831/672	RS
JAN 1987	ADDED UTILITY EASEMENT PER OR 1831/672	RS
JAN 1987	ADDED UTILITY EASEMENT PER OR 1831/672	RS
NOV 1985	ADDED UTILITY EASEMENT PER OR 1831/672	RS

LEGEND

- D.O.T. Limited Access R/W
- ☐ County Section Corner Monument
- County Bench Mark
- Permanent Ref. Mon. for Subs.
- ① Subdivision Index Number

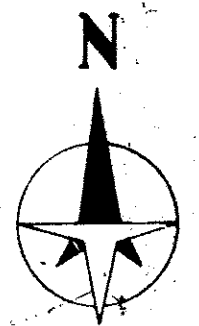
SARASOTA COUNTY, FLORIDA

Scale 1" = 200' Date: DEC. 1979
Drawn By: J.W. Esber

N 1/2 SECTION 13
TWP 37 S, RGE 18 E.

Sheet No.

95



BRUNING 44-511 16772