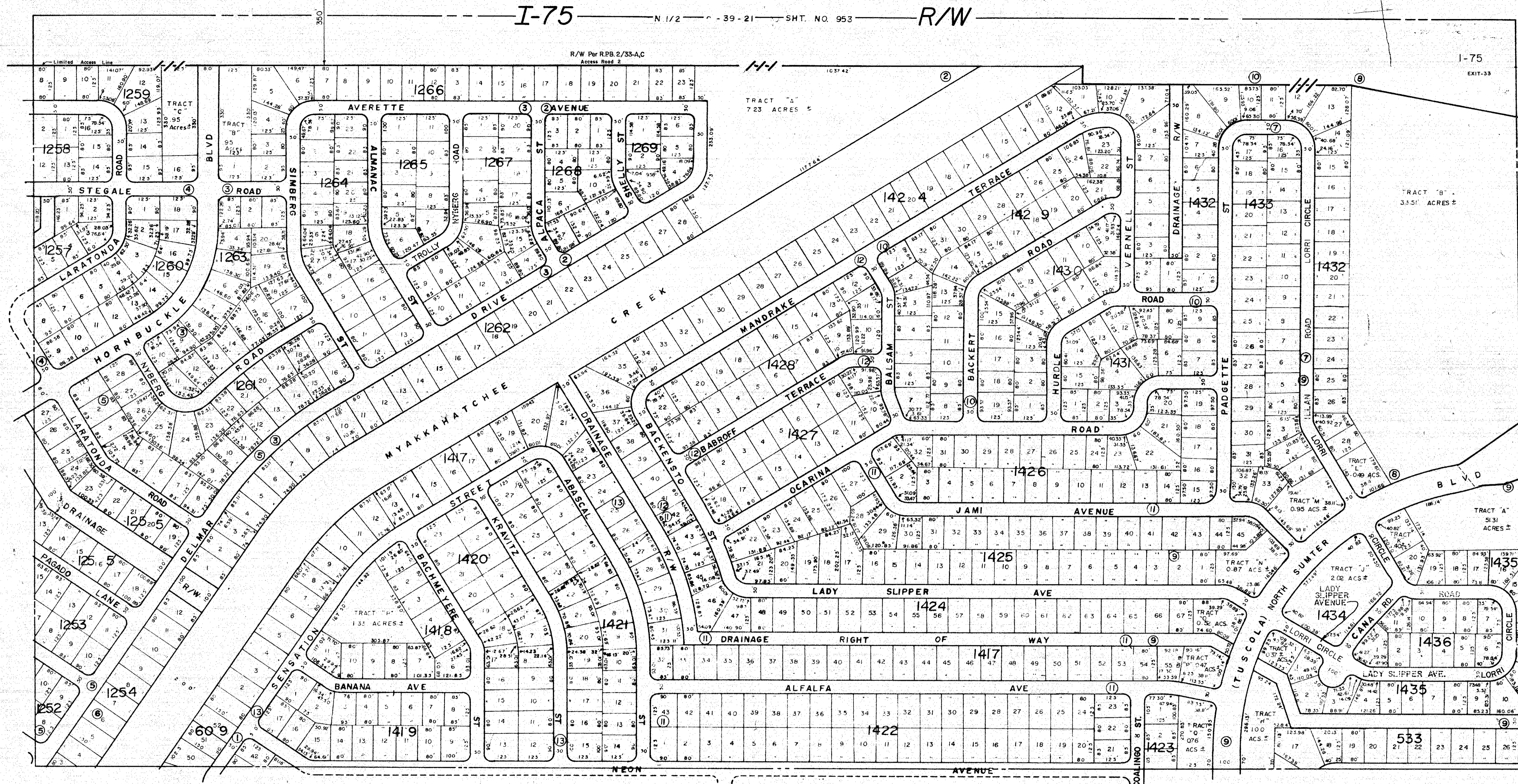


S 1/2 8-39-21 SHT. NO. 952

S 1/2 10-39-21 SHT. NO. 956



I-75 N 1/2 8-39-21 SHT. NO. 953 R/W

N 1/2 16-39-21 SHT. NO. 967

SUBDIVISION INDEX

| No. | Name                           |
|-----|--------------------------------|
| 1.  | PORT CHARLOTTE 18th ADD. 14/6Q |
| 2.  | " " " " 15/11A                 |
| 3.  | " " " " 15/11B                 |
| 4.  | " " " " 15/11C                 |
| 5.  | " " " " 15/11G                 |
| 6.  | " " " " 15/11H                 |
| 7.  | " " " " 29th 15/13A            |
| 8.  | " " " " 15/13B                 |
| 9.  | " " " " 15/13C                 |
| 10. | " " " " 15/13K                 |
| 11. | " " " " 15/13L                 |
| 12. | " " " " 15/13M                 |
| 13. | " " " " 15/13N                 |

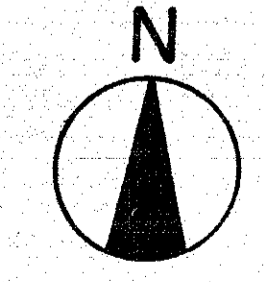
LEGEND

--- D.O.T. Limited Access R/W

| ALTERATIONS |                                      | DESCRIPTION |  |
|-------------|--------------------------------------|-------------|--|
| DATE        |                                      |             |  |
| FEB. 1986   | Added I-75 R/W per SRD Map           | SEP         |  |
| JAN. 1985   | Added D.O.T. Limited Access I-75 R/W | KLM         |  |
| FEB. 1986   | Added I-75 EXIT NO.                  | SCB         |  |
| JULY 1990   | CHANGED STREET NAME PER O.R. 2045/65 | SOS         |  |

SARASOTA COUNTY FLORIDA  
SCALE: 1" = 200'  
SEPT. 1968

S 1/2 SECTION 9  
TWP. 39 S. RGE. 21 E.



SHT. NO.  
954