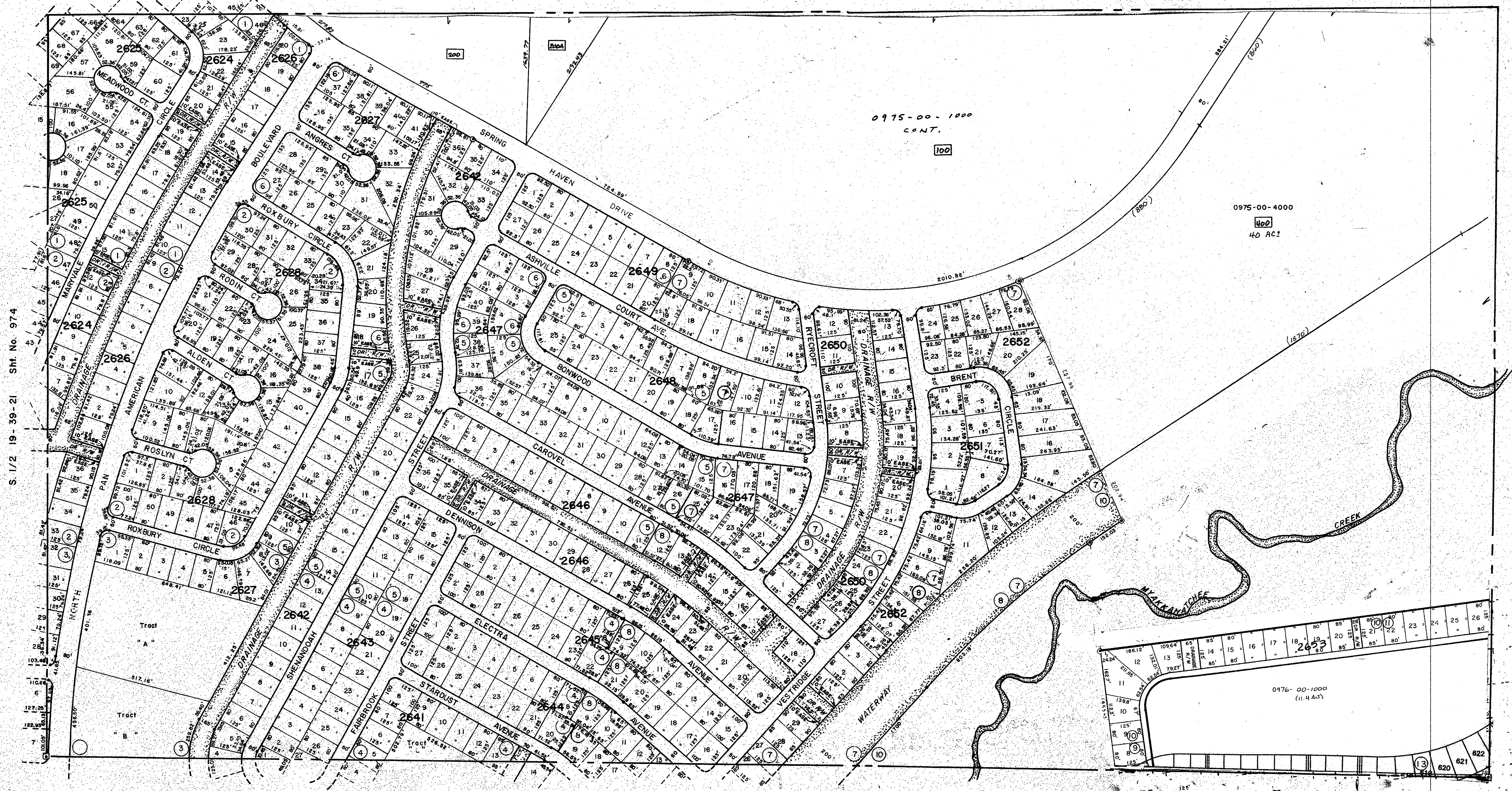


SARASOTA COUNTY, FLORIDA
976



S. 1/2 19-39-21 Sht. No. 974

S. 1/2 21-39-21 Sht. No. 978

SUBDIVISION	INDEX
1 Port Charlotte, 52nd Add.	21/13C
2 " " " "	21/13D
3 " " " "	21/13E
4 " " " "	21/13O
5 " " " "	21/13P
6 " " " "	21/13Q
7 " " " "	21/13R
8 " " " "	21/13S
9 " " " "	21/13V
10 " " " "	21/13W
11 " " " "	21/13X
12 " " " "	21/13Y
13 HERON CREEK UNIT 7	PB43PG29

- LEGEND:
- County Section Corner Monument
 - ⊙ Permanent Reference Monument
 - Reference Point for Subdivisions
 - ① Subdivision Index Number
 - Drainage

REVISIONS	
DATE	DESCRIPTION
JULY 1990	CHANGED STREET NAMES PER O.R. 2040/765 S.D.S.

SARASOTA COUNTY, FLORIDA
Scale: 1" = 200'
Date: Dec. 1974
Drawn By: S.K.B. & D.G.N.

**S. 1/2 Section 20
Twp. 39 S. - Rge. 21 E.**

Sheet No.
976

BRUNING 44-511 16772