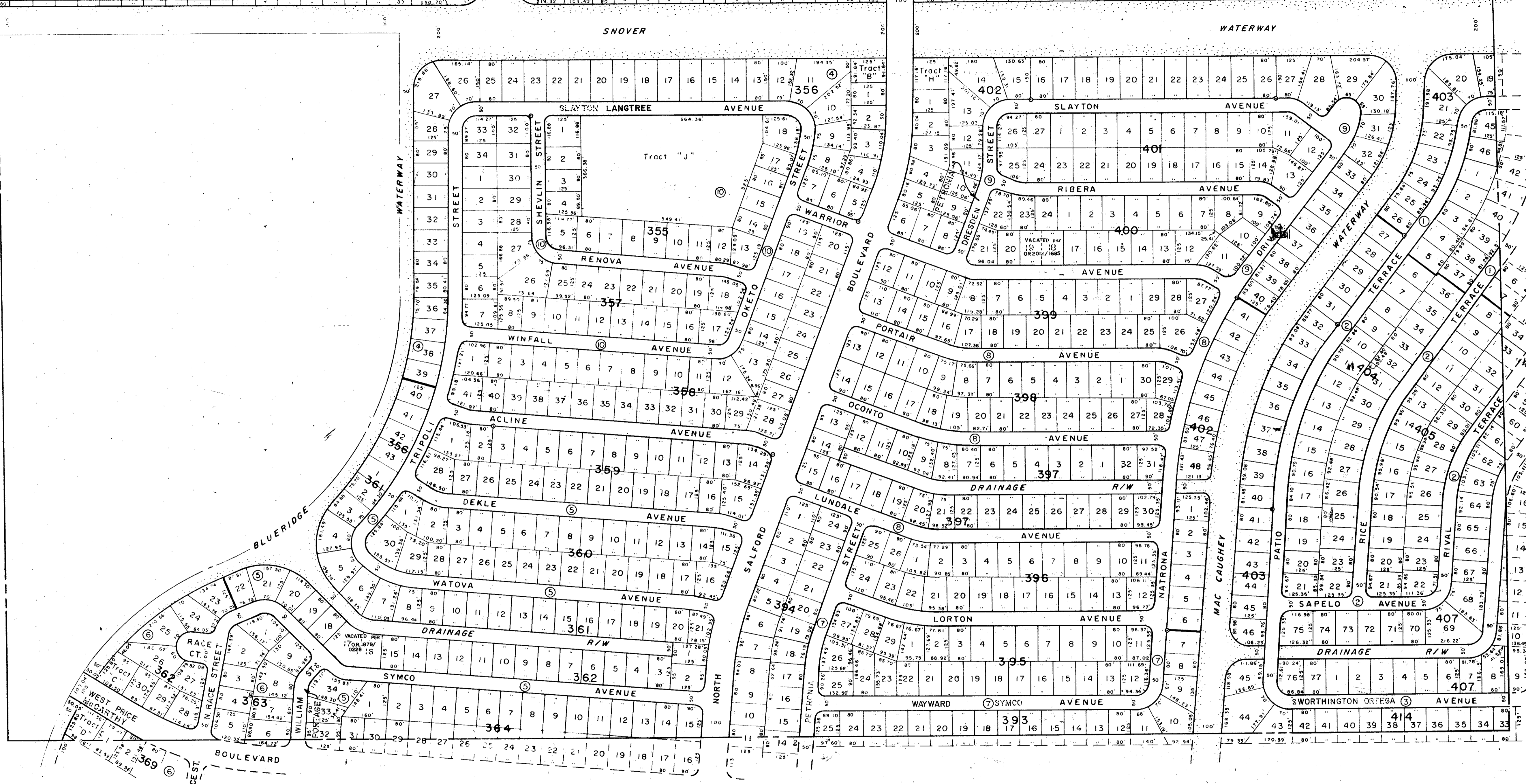


565 515 510 854



SUBDIVISION INDEX

No.	Name	No.	Name
1	PORT CHARLOTTE 9th. ADD.	7	12/21 F
2	"	8	12/21 G
3	"	13	12/21 L
4	"	2	12/22 A
5	"	3	12/22 B
6	"	4	12/22 C
7	"	11	12/22 J
8	"	12	12/22 K
9	"	13	12/22 L
10	"	14	12/22 M
11	"	5	13/2 D
12	"	6	13/2 E
13	PORT CHARLOTTE 18th. ADD.	3	14/6 B
14	"	12	14/6 K

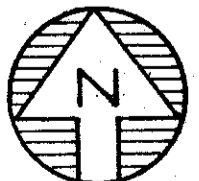
- LEGEND**
- PERM. REF. MON. (for Subs.)
 - CONC. MON.
 - IRON PIPE
 - CO. SEC. COR. MON.
 - CO. BENCH MARK

ALTERATIONS	
DATE	DESCRIPTION
APRIL 1968	ADDED PORT CHARLOTTE, 18TH. ADD.
SEPT. 1968	VACATED INTERIOR LOT LINES & ESMTS. IN BLK. 362, 104 16 & 17 PER OR 1879/0228 AS
MAR. 1980	VACATED INTERIOR LOT LINES & ESMTS. IN BLK. 400, 104 18 & 19 PER OR 2012/665 505
JULY 1980	CHANGED STREET NAMES PER OR 2046/65

SARASOTA COUNTY FLORIDA
SCALE: 1" = 200'
OCT. 1960

N 1/2 SECTION 22
TWP. 39 S. RNG. 21 E.

SHT. NO.
979



N 1/2 21-39-21 SHT. NO. 977

N 1/2 23-39-21 SHT. NO. 981