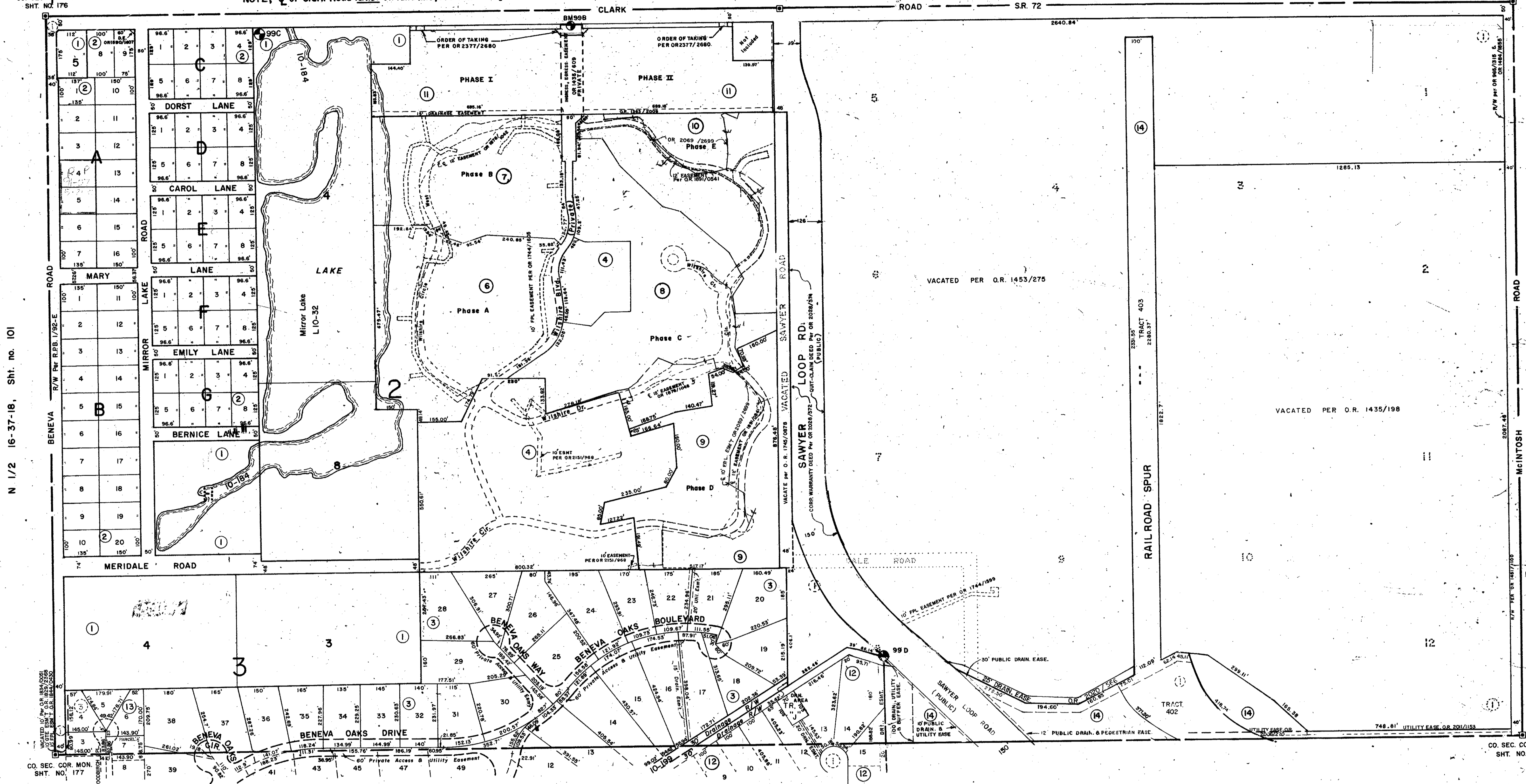


NOTE: ϕ of Clark Road is not on land line, see R.P.B. I Pgs 45-48



N 1/2 16-37-18, Sht. no. 101

N 1/2 14-37-18, Sht. no. 97

SUBDIVISION INDEX

No.	Name	Notes
1.	SARASOTA-VENICE CO. Sub. of Sec's. 14 & 15-37-18	A/10
2.	CLARK LAKES	6/29
3.	BENEVA OAKS	26/9
4.	BENEVA OAK VILLAS CONDO.	C.B. 15/30
5.	LAKE SHORE VILLAGE OVERALL	CB 21/43
6.	LAKE SHORE VILLAGE PH A	CB 21/43 DBE
7.		B CB 24/77
8.		C CB 24/8
9.		D CB 26/4
10.		E CB 26/41
11.	LAKE SHORE VILLAGE PLAZA	CB 21/48 CB 24/20
12.	GOLF GATE EAST UNIT 5	PB. 30/39
13.	BENEVA OAKS II	PB. 33/14-14C
14.	PALMER PARK OF COMMERCE	PB. 35/32-32E

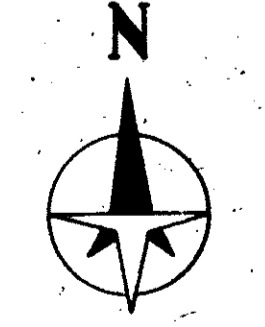
LEGEND:

- ☐ County Section Corner Monument (NEW)
- ⊙ County Bench Mark
- Permanent Ref. Mon. for Subs.
- ① Subdivision Index Number

DATE	DESCRIPTION	BY
SEPT. 1988	ADDED LAKESHORE VILLAGE CONDO, PHASE D	PJB
AUG. 1988	REVISED ORDER OF TAKING PER OR 2377/2680	WFW
FEB. 1988	REVISED SAWYER ROAD PER ORB 2026/572	RJJ
MAY 1988	ADDED PALMER PARK OF COMMERCE	WFW
FEB. 1988	ADDED BENEVA OAKS II P.B. 33/14-14C	JRO
JUN. 1988	ADDED BENEVA OAKS II P.B. 33/14-14C	JRO
JAN. 1988	ADDED BENEVA OAKS II P.B. 33/14-14C	JRO
AUG. 1988	ADDED BENEVA OAKS II P.B. 33/14-14C	JRO
MAY 1988	ADDED BENEVA OAKS II P.B. 33/14-14C	JRO
FEB. 1988	ADDED BENEVA OAKS II P.B. 33/14-14C	JRO
JUN. 1988	ADDED BENEVA OAKS II P.B. 33/14-14C	JRO
JUN. 1988	ADDED BENEVA OAKS II P.B. 33/14-14C	JRO
NOV. 1981	ADDED BENEVA OAKS II P.B. 33/14-14C	JRO

SARASOTA COUNTY, FLORIDA

Scale: 1" = 200' Date: April 1979 Drawn By: J.W. Esber



Sheet No.

99

N 1/2 SECTION 15 TWP. 37 S., RGE. 18 E.