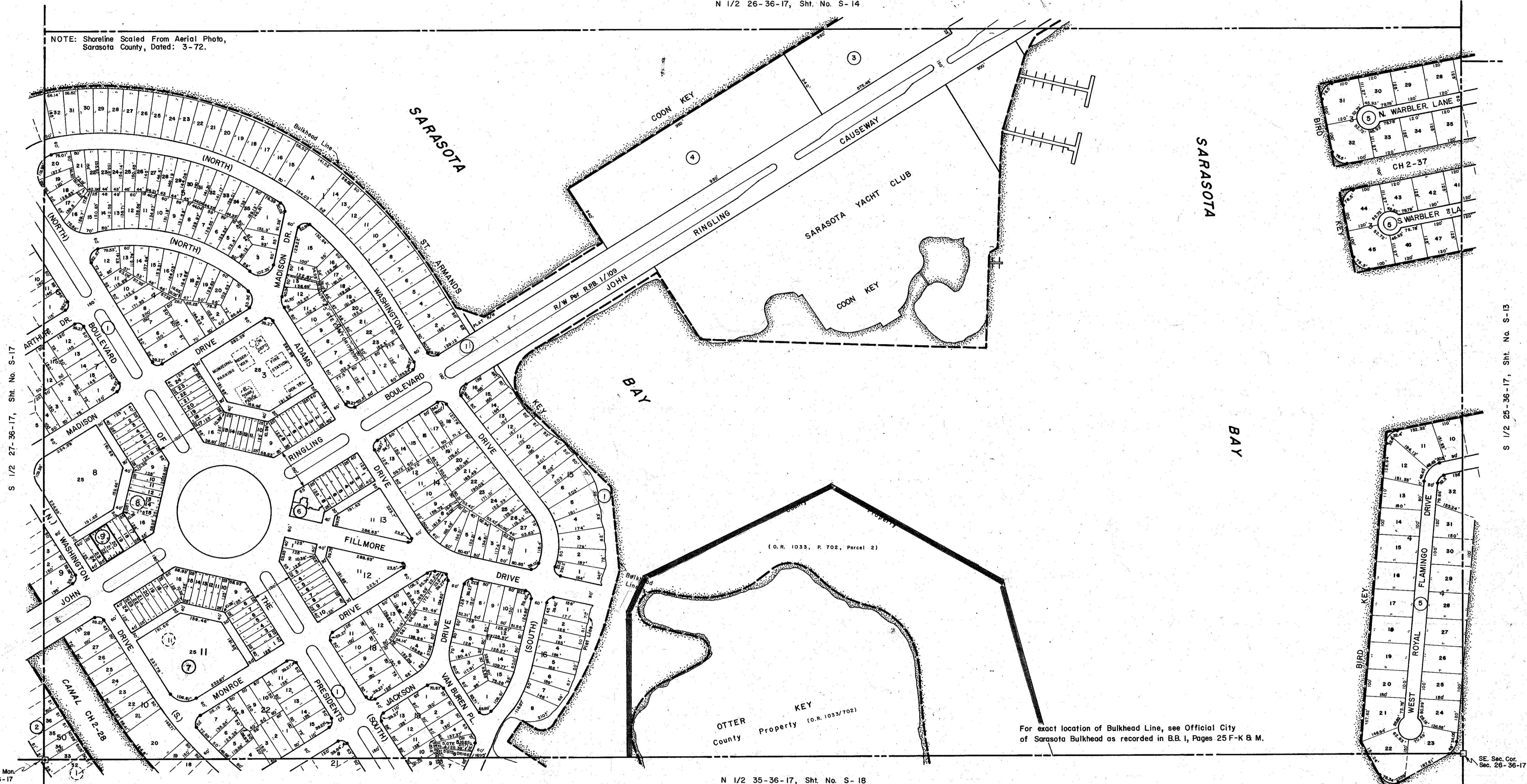


NOTE: Shoreline Scaled From Aerial Photo,
Sarasota County, Dated: 3-72.



S 1/2 27-36-17, Sht. No. S-17

S 1/2 25-36-17, Sht. No. S-13

SW. Sec. Cor. Mon.
Sec. 26-36-17

SE. Sec. Cor.
Sec. 26-36-17

SUBDIVISION INDEX

1. St. Armands Div. John Ringling Estates, 2/30
2. Lido Beach Div. Sub. Bks. 50, 57, 59, 60, 61, 62, 63, Plat 3, 2/208
3. Sarasota Harbour Apt. Condo., C.B. 1/27
4. Sarasota Harbour Apt. Condo., C.B. 1/1
5. Bird Key Sub., 11/20-20F
6. Old Colony Building, C.B. 7/26 (AMENDED PLAT C.B. 14/14)
7. Kingston Arms C.B. 19/46
8. NORTHWEST QUADRANT CONDO CB 26/13
9. M & I CONDO. CB. 29/26-26A

LEGEND:

- Section Corner Monument
- Bench Mark
- ⊛ Permanent Reference Monument
- ① Subdivision Index Number

DATE	REVISIONS DESCRIPTION	
Mar. 1974	Old Colony Building Added	D.E.B.
Apr. 1975	County Property - O.R. 1033, P. 702-706	K.J.J.
JAN 1983	KINGSTON ARMS, CONDO NORTHWEST QUADRANT CONDO CB 26/13	R.J.J.
AUG 1987	ADDED CANAL NUMBERS	SCB
NOV 1988	ADDED SITE EASMT Per OR 1797/971	SCB
NOV 1988	ADDED SITE EASMT Per OR 1855/201	SCB
NOV 1988	ADDED SITE EASMT Per OR 1855/1655	SCB
JUL 1991	ADDED M&I CONDO	DSW

SARASOTA COUNTY, FLORIDA

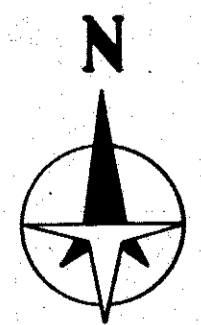
Scale: 1" = 200' Date: August, 1973

Drawn By: D.E.B. & J.L.D.

CITY OF SARASOTA
S 1/2 Sec. 26, Twp. 36, Rge. 17

Sheet No.

S
15



BRUNING 44-511 16772