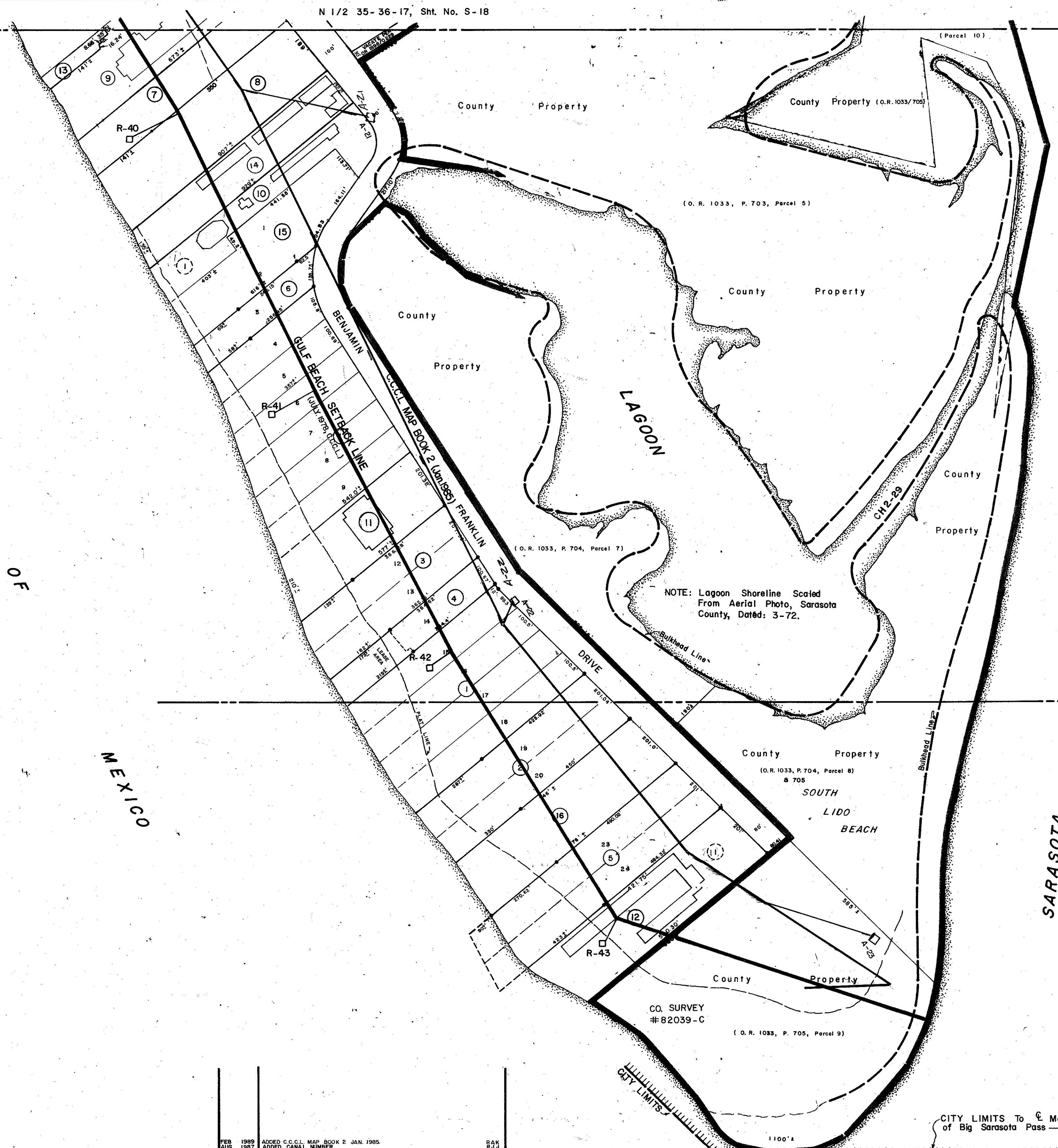


NOTE: Shoreline Scaled From Aerial Photos, Sarasota County, Dated: 3-72.



For exact location of Bulkhead Line, see Official City of Sarasota Bulkhead as recorded in B.B. 1, Pages 25 B&C.

NOTE: Lagoon Shoreline Scaled From Aerial Photo, Sarasota County, Dated: 3-72.

SUBDIVISION INDEX

- 1. South Lido Shores, 5/50
- 2. Lido Harbour Condo., C.B. 2/12
- 3. Key Towers South Condo., C.B. 4/39 & 39A
- 4. Lido Harbour Towers Condo., C.B. 4/10 & 10A
- 5. Lido Harbour South Condo., C.B. 2/37 & 37A
- 6. Mark Twain Apt. Condo., C.B. 1/6, Rev. C.B. 1/42
- 7. Lido Beach Div. B., 2/207
- 8. Lido Beach Club, C.B. 8, P.3
- 9. Lido Surf & Sand, Condo., C.B. 9/40, 40A
- 10. Three Crowns Condo. Hotel, C.B. 11/38-38F
- 11. LIDO REGENCY CONDO., C.B. 13/33, A-G
- 12. SARASOTA SANDS CONDOMINIUM, C.B. 14/4 A, B
- 13. LIDO TOWERS CONDOMINIUM, C.B. 14/30, D
- 14. LIDO BEACH INN CONDO., C.B. 14/48, O
- 15. AZURE TIDES CONDO. HOTEL, C.B. 16/15, 25/28, G
- 16. Triton Beach Resort Condo., C.B. 16/25

LEGEND:

- Section Corner Monument
- ⊠ Bench Mark
- Permanent Reference Monument
- ① Subdivision Index Number

DATE	REVISIONS	DESCRIPTION
FEB 1989	ADDED C.C.L. MAP BOOK 2 JAN. 1985	
AUG 1987	ADDED CORNER NUMBER	
OCT 1986	VACATED W/1/886/0229	
AUG 1986	VACATED WILSON DR. BY ORDINANCE No. 85-293-4	
JUNE 1974	Added Lido Beach Club	
AUG 1975	Split - County Property - O. R. 1033, P. 702-706	D.G.N.
FEB 1977	Added Lido Surf & Sand	J.W.E.
DEC 1973	Added The Three Crowns Condo. Hotel, C.B. 11/38-38F	L.S.D.
JAN 1980	ADDED LIDO BEACH INN CONDO.	L.S.D.
MAY 1980	ADDED SARASOTA SANDS CONDOMINIUM	L.S.D.
JUL 1980	ADDED LIDO TOWERS CONDOMINIUM	L.S.D.
AUG 1980	ADDED LIDO BEACH INN CONDOMINIUM	L.S.D.
MAR 1981	AZURE TIDES CONDO HOTEL	L.S.D.
MAR 1981	TRITON BEACH RESORT CONDO	J.W.Y.
JAN 1984	C.C.L.	J.W.Y.
MAR 1986	AMENDED PLAT OF AZURE TIDES RESORT CONDO. Per C.B. 25/28	M.B.

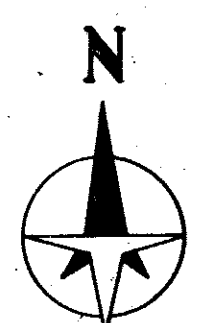
SARASOTA COUNTY, FLORIDA

Scale: 1" = 200' Date: August, 1973
Drawn By: D.E.B. & J.L.D.

CITY OF SARASOTA
S 1/2 Sec. 35, Twp. 36, Rge. 17
N 1/2 Sec. 2, Twp. 37, Rge. 17

Sheet No.

S
19



Sec. Cor. Taken From Plat of Lido "B", 2/207

Sec. Cor. Determined From U.S. Gov't Land Office Survey Notes of J. P. Aphorpe, Dated: Feb. 1876.

S 1/2 36-36-17, Sht. No. S-21

35-36-17
2-37-17

BRUNING 44-511 16772