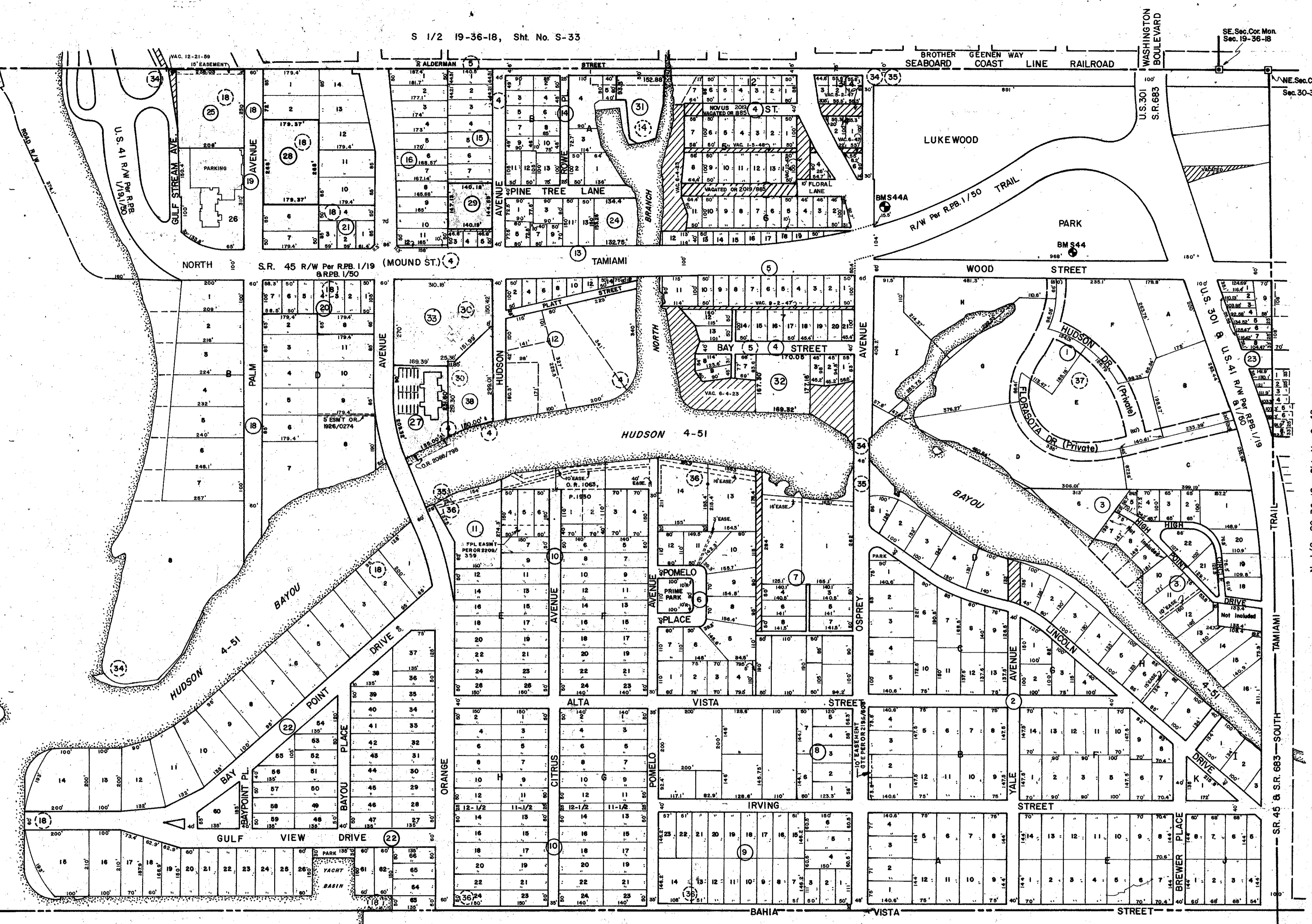


NOTE: Shoreline Scale From Aerial Photo Sarasoto County Dated: 3-72.



N 1/2 25-36-17, Sht. No. S-12

SARASOTA BAY

N 1/2 29-36-18, Sht. No. S-42

SUBDIVISION INDEX

- 1. Florasota Gardens, 5/1, 1A
2. Avondale, 1/72, 73
3. High Point Circle 4/10
4. Hudson Bayou Add., A/56
5. Hudson Bayou Add., Replat of Part Blks. 6 & 7, 4/58
6. Prime Sub., 5/11
7. Harvey Sub., 1/127
8. Rigby Sub., 1/70
9. Graham Heights, 1/110
10. Bungalow Hill, A/51
11. Gaston Lot, 1/14
12. Plat of Strong Point, 3/37
13. Redd Sub., A/13
14. Resub. Blks. 1 & 2, Hudson Bayou Add., 1/29
15. Owen Burns Sub. Lot 3, Whitakers Add., A/10
16. Resub. Blk. 17, Zokrzewski's Add., A/67
17. Zokrzewski's Add., Blk. H, A/33
18. Zokrzewski's Add., Blks. A, B, C, D, A/33
19. Magnolia Terrace, A/67
20. Resub. Lots 1, 2, & 13, Blk. D, Zokrzewski's Sub., A/17
21. Louis J. Millers Sub., 1/11A
22. Bay Point Park, 1/201
23. Glenwood Park Unit 1, 2/134
24. Bayou House Apts., C.B. 7/27
25. Essex House, C.B. 8/5
26. Embassy House, C.B. 9/27
27. Chantilly Apartments, C.B. 12/18, A
28. Palm Place, C.B. 20/21
29. 766 Hudson Avenue, C.B. 20/42
30. HUDSON HARBOUR, C.B. 23/18 & 26/19
31. HUDSON OAKS, C.B. 23/25
32. RIGGS LANDING CONDOMINIUM, C.B. 23/43, 24/26, 26/34
33. SECOND AMENDED PLAT OF HUDSON HARBOUR, C.B. 26/41
34. PLAT OF SARASOTA, A/30
35. WHITAKERS ADD. TO SARASOTA, P.B. A/30
36. BAHAI VISTA (BAYVIEW) HEIGHTS, P.B. A/67
37. GLENWOOD PARK UNIT 2, P.B. 2/189
38. HUDSON LANDINGS, C.B. 28/9

- Section Corner Monument
Bench Mark
Permanent Reference Monument
Subdivision Index Number

Table with columns: DATE, DESCRIPTION, REVISIONS. Includes entries for various dates from 1974 to 1984 and descriptions of easements and subdivisions.

SARASOTA COUNTY, FLORIDA

Scale: 1" = 200' Date: May, 1973 Drawn By: D.E.B. & J.L.D.

CITY OF SARASOTA N 1/2 Sec.30, Twp. 36, Rge. 18

Sheet No.

