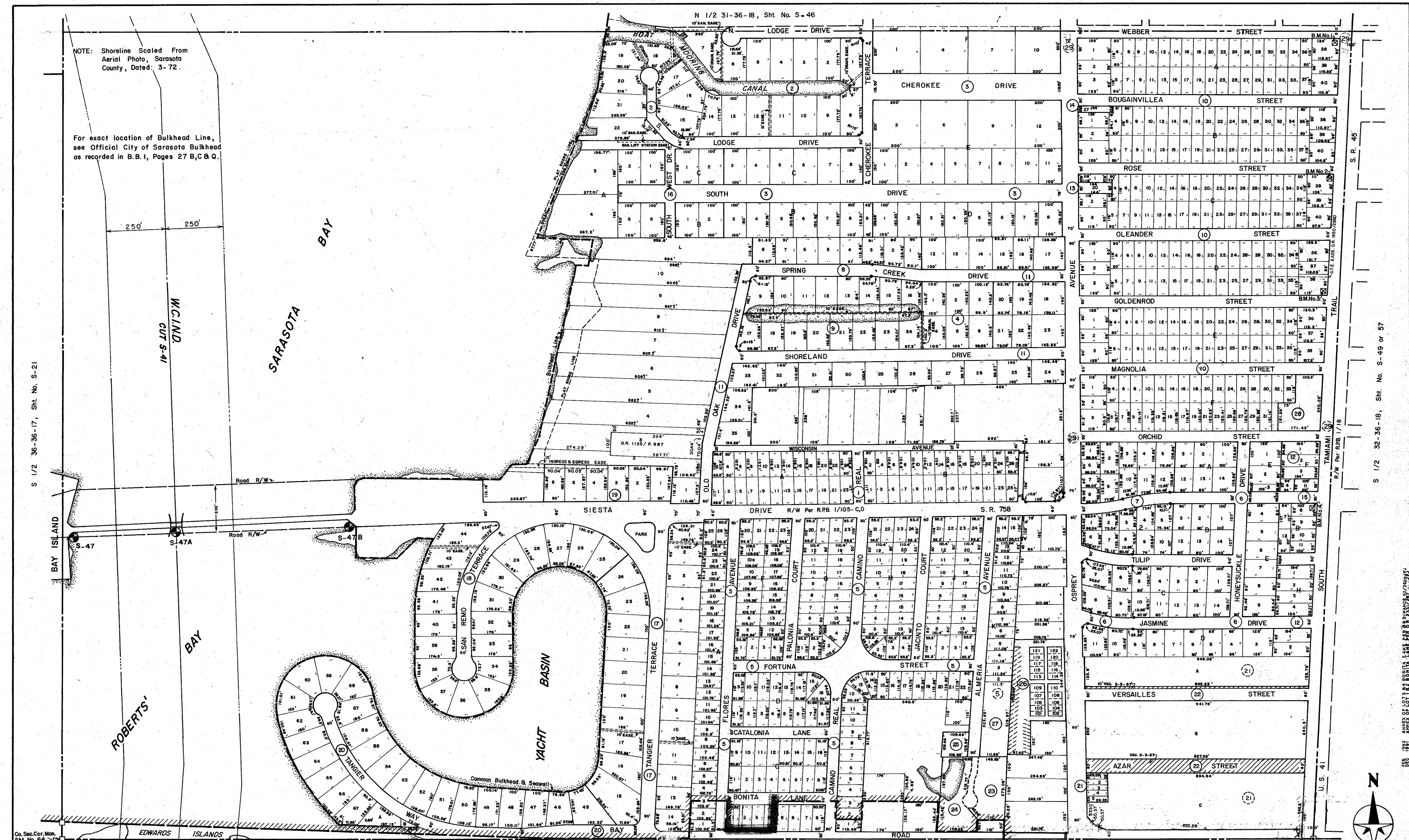


NOTE: Shoreline Scaled From Aerial Photo, Sarasota County, Dated: 3-72.

For exact location of Bulkhead Line, see Official City of Sarasota Bulkhead as recorded in B.B.I., Pages 27 B,C & Q.



S 1/2 36-36-17, Sht. No. S-21

S 1/2 36-36-18, Sht. No. S-49 or 57

Co. Sec. Cor. Mon. Sht. No. 64

Co. Sec. Cor. Mon. Sht. No. 3

**SUBDIVISION INDEX**

- Bayview Sub., 1/156
- Cherokee Lodge Sub., 17/49A
- Cherokee Park Sub., 2/156
- Carrise Lakeside Sub., 18/50
- Granada Sub., 1/57
- Hartland Park Sub., 5/39
- Hartland Park Resub., 5/63
- Lake Park Sub., 10/70
- Lake Park Sub., Unit 2, 17/32
- Poinsettia Park Sub., 1/145
- Shoreland Woods Sub., 4/22
- South Square Sub., 4/86
- Steln & Theodore Add., Lot 20, 1/145

**BENCH MARK SCHEDULE**

- 14 Steln & Theodore Add., Lot 27, 1/145
- 15 Sunnyside Sub., Blks. A & B, 2/60 1/2
- 16 Plat of Parts Blk. B & C, & Blk. A
- 17 Cherokee Park Sub., 4/33
- 18 San Remo Estates, Unit 1, 6/36A Replat of 2/113
- 19 Sunset Bay Sub., 10/26 Replat of 2/113
- 20 San Remo Estates, Unit 3, 9/12 Replat of 2/113
- 21 Versailles Sub., Blk. I, 2/4
- 22 Versailles Sub., Replat, 3/80
- 23 Westchester Apt. Condo., Sec. 1, C.B. 3/38 & 42
- 24 Westchester Apt. Condo., Sec. 2, C.B. 1/18
- 25 Westchester Apt. Condo., Sec. 3, C.B. 2/19
- 26 The Plaza Gardens Condominium C.B. 12/30

**LEGEND:**

- in S/W SW. Cor. U.S. 41 & Webber, 21.00'
- in S/W SW. Cor. U.S. 41 & Rose, 22.10'
- in S/W NW. Cor. U.S. 41 & Goldenrod, 23.14'
- in S/W SW. Cor. U.S. 41 & Siesta, 24.46'
- Section Corner Monument
- ⊠ Bench Mark
- Permanent Ref. Mon.
- ① Subdivision Number

**REVISIONS**

DATE	DESCRIPTION	J.M.
MAY 1978	BASEMENT LOTS 4, 5, 6; SUNSET BAY	J.M.
AUGUST 1977	SPLIT LOTS 2, 3, 4; O.R. 1135/P. 987	J.M.
JULY 1979	ADDED THE PLAZA GARDENS CONDOMINIUM	J.M.
FEB. 1981	ADDED THE ALMERA CONDO	J.M.
MAR. 1981	REVISED CITY LIMITS FOR ANNEXATION ORD. NO. 80-2482	J.M.
MAY 1981	ADDITIONAL CORNER R/W PER O.R. 955/643 & 644	J.M.
JAN. 1982	CORRECTED INDEX ERROR	J.M.
MAY 1982	ADDED PLAT INTERSECTION OSPREY BAY RD OR 2012/559	J.M.
MAY 1982	PHONE 5/6 789 TO 790	J.M.
MAR 1982	GENERAL TELEPHONE EASEMENT OR 1950/2860	J.M.
MAY 1982	ADDED W.C.L. 4	J.M.

**SARASOTA COUNTY, FLORIDA**

Scale: 1" = 200' Date: August, 1973

Drawn By: D.E.B. & J.L.D.

**CITY OF SARASOTA**

S 1/2 Sec. 31, Twp. 36, Rge. 18

Sheet No. **S 47**