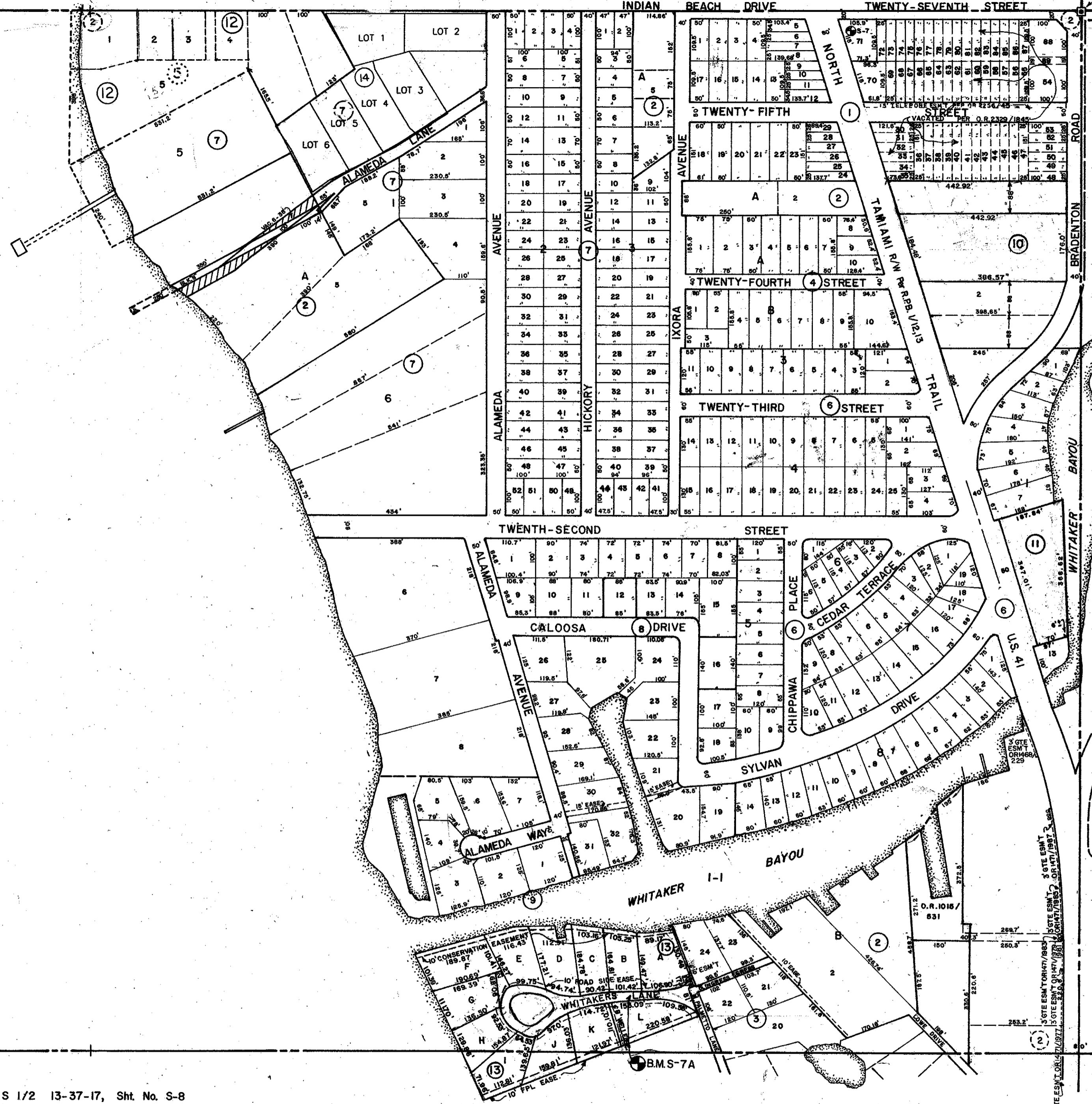


NOTE: Shoreline Sealed From Aerial Photo, Sarasota County, Dated: 3-72.

SARASOTA BAY



**SUBDIVISION INDEX**

1. Greenwood, 2/137
2. W.H. Whitaker's, A/67
3. Tahiti Park, 4/88
4. North Highland, 1/149
5. Adams Estate, 1/149
6. Sylvan Shores, 1/141
7. Sarasota Bay Park, 1/49
8. Weber, 8/10A
9. Alan T. Owens, 8/110
10. Hickory Hill Condominium CB 13/15
11. Laridae Apartments C.B. 22/3
12. Whitaker Waterfront Condo. CB 24/35
13. M.C. MORRIS (N/C) SUBDIVISION A/67
14. WHITAKER'S LANDING, P.B. 35/43-43B
15. OLD OAKS SUB RB 39 PG 35

**LEGEND:**

- Section Corner Monument
- Bench Mark
- Permanent Reference Monument
- ① Subdivision Index Number

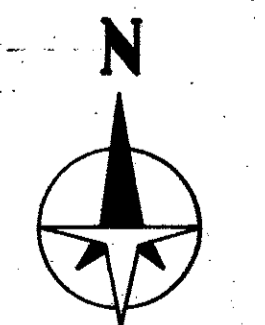
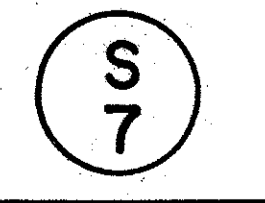
DATE	REVISIONS	DESCRIPTION	D.S.M.
NOV 1975	ADDED WHITAKER'S LANDING, P.B. 35/43-43B		KAM
NOV 1975	CORRECTED HICKORY HILL CONDO. C.B. 13/15		KAM
OCT 1975	VACATED PART OF LOT 2, WHITAKER'S SUB., P.B. A/67		KAM
SEPT 1975	VACATED LOTS 30-32, 35-38, GREENWOOD, SUB. RB. 2/137		DSM
JUL 1975	ADDED CONSERVATION ESM T PER O.R. 234/2186		DSM
JAN 1975	ADDED TELEPHONE ESM T PER O.R. 228/462		DSM
OCT 1974	3 SITE ESM T PER O.R. 1471/1077, 1979, 1981, 1983, 1985, 1987		SCB
OCT 1968	3 SITE ESM T O.R. 1045/225		SCB
AUG 1967	ADDED CANAL NUMBER		R-2J
July 1975	Split lot 1 Blk B, Whitaker Subdivision		D.S.M.
APR 1977	Split Lot 19, Blk B, O.R. 102/888		L.S.T.
APR 1977	Split Lot 19, Blk B, O.R. 102/888		L.S.T.
APR 1977	Split Lot 19, Blk B, O.R. 102/888		L.S.T.
APR 1977	Split Lot 19, Blk B, O.R. 102/888		L.S.T.
DEC 1979	Added Hickory Hill Condominium		L.S.T.
MAY 1984	LARIDAE APARTMENTS Condo.		J.M.
AUG 1984	WHITAKER WATERFRONT CONDO.		R-2J
MAR 1987	ADDED B.M. S-7		R-2J
JULY 1987	ADDED PERM. EASEMENT OR 1924/2841		R-2J
FEB 1987	Added M.C. MORRIS (N/C) SUB		PAR

**SARASOTA COUNTY, FLORIDA**

Scale: 1" = 200' Date: April, 1973  
Drawn By: D.E.B. & J.L.D.

**CITY OF SARASOTA**  
N 1/2 Sec. 13, Twp. 36, Rge. 17

Sheet No.



BRUNING 44-511 16772