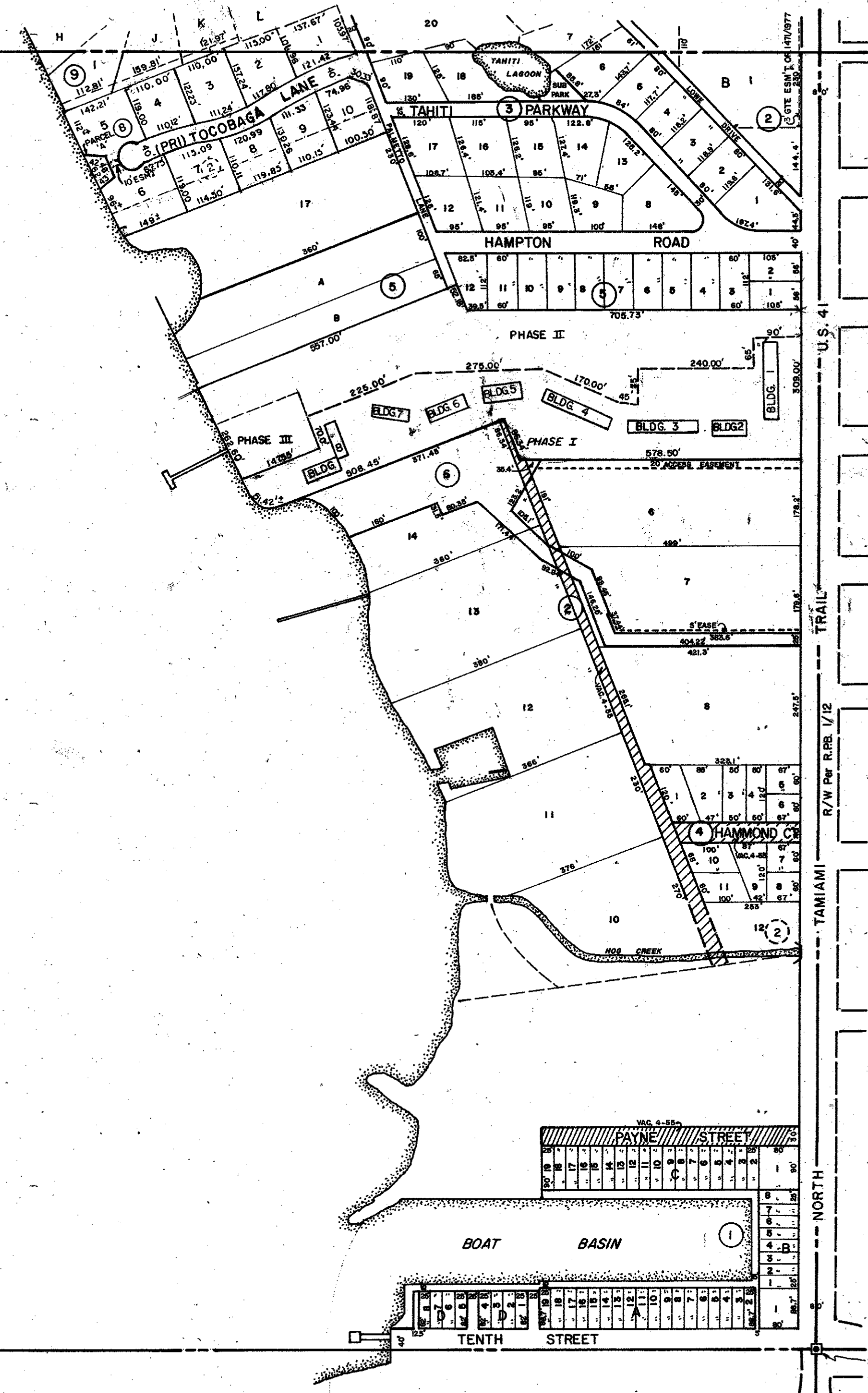


N 1/2 13-36-17, Sht. No. S-7

NOTE: Shoreline Scaled From Aerial Photos
Sarasota County, Dated: 3-72.

SARASOTA
BAY



S 1/2 18-36-18, Sht. No. S-31

SW. Sec. Cor.
Sec. 13-36-17

SE. Sec. Cor. Mon.
Sec. 13-36-17

N 1/2 24-36-17, Sht. No. S-10

SUBDIVISION INDEX

1. Payne Terminal Resub., 2/206, 1/20
2. W. H. Whitaker's Sub., A/67
3. Tahiti Park, 4/88
4. A. H. Hammond Sub., 1/67
5. Resub. Lots 3 & 16, Blk. "B", W. H. Whitaker's Sub., 1/23 & 1/125-1/2
6. Boy's Bluff Condo., Sec. 1, C.B. 4/11, 11A, 11B
7. FRANKLIN MANOR CONDOMINIUM C.B. 14/6, A-(PHASE I)
8. TOCOBAGA BAY SUB. 34/50
9. WHITAKER'S LANDING, PB 35/43-43B

LEGEND:

- ▣ Section Corner Monument
- ⊠ Bench Mark
- Permanent Reference Monument
- ① Subdivision Index Number

DATE	DESCRIPTION	L.R.T.
JUNE 1980	ADDED FRANKLIN MANOR CONDO. PHASE I	SDB
OCT 1980	ADDED 3' EYE EIGHT RW/DR 14/17/87/7	V/Z
MAR 1991	ADDED TOCOBAGA BAY 34/50	KAM
NOV 1992	ADDED WHITAKER'S LANDING, P. B. 35/43-43 B	

**SARASOTA COUNTY,
FLORIDA**

Scale: 1" = 200' Date: April, 1973
Drawn By: D.E.B. & J.L.D.

CITY OF SARASOTA
S 1/2 Sec. 13, Twp. 36, Rge. 17

Sheet No.

S
8

