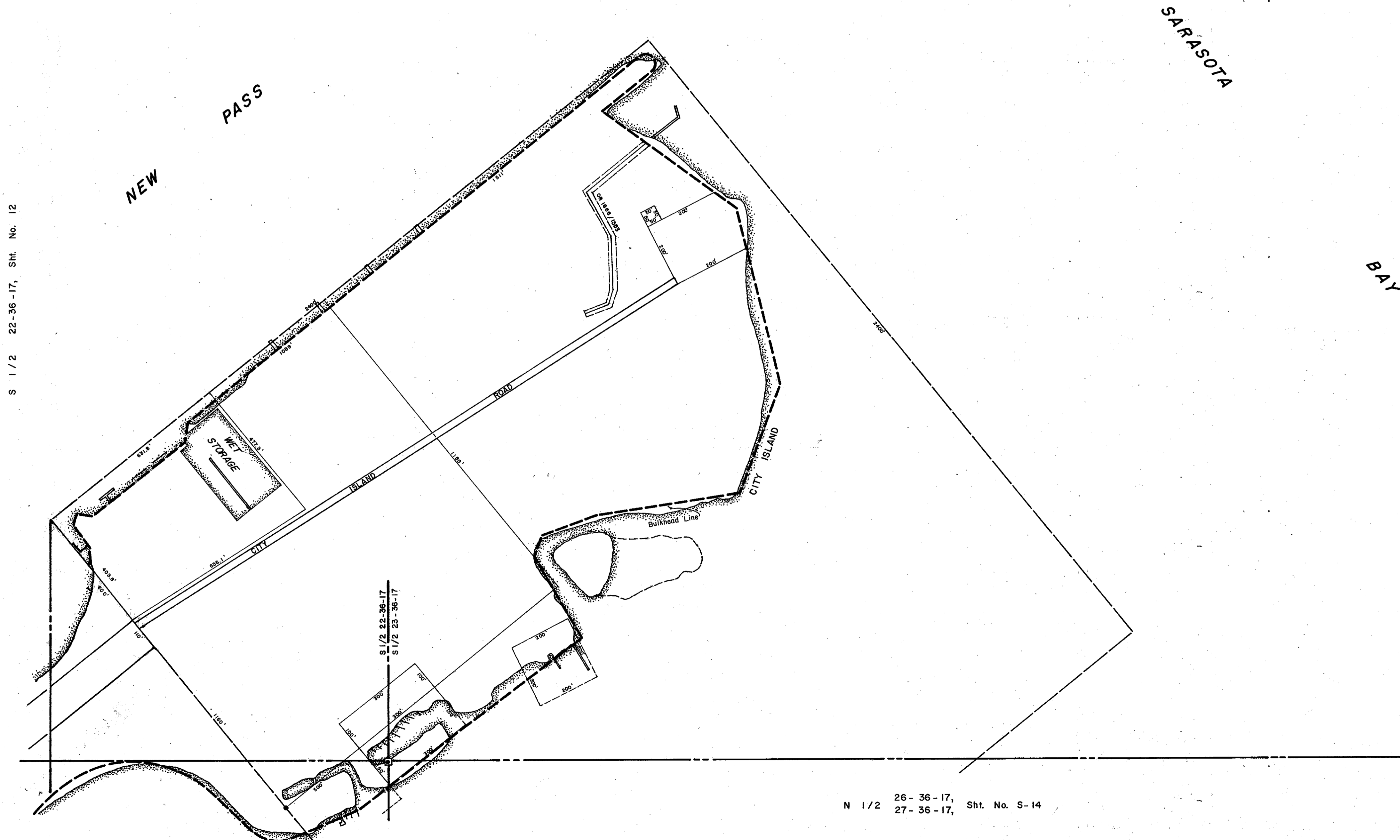


NOTE: Shoreline Scaled From Aerial Photos,
Sarasota County, Dated: 3-72.



For exact location of Bulkhead Line, see Official City
of Sarasota Bulkhead as recorded in B.B.1, Page 25 J.

S 1/2 22-36-17, Sht. No. 12

N 1/2 26-36-17, Sht. No. S-14
27-36-17

- LEGEND:**
- ▣ Section Corner Monument
 - ⊠ Bench Mark
 - Permanent Reference Monument
 - ① Subdivision Index Number

REVISIONS	
DATE	DESCRIPTION
NOV 1986	FPBL EASEMENT, OR 1888/1353

**SARASOTA COUNTY,
FLORIDA**

Scale: 1" = 200' Date: August, 1973

Drawn By: D.E.B. & J.L.D.

CITY OF SARASOTA

S 1/2 Sec. 23, Twp. 36, Rge. 17
S 1/2 Sec. 22, Twp. 36, Rge. 17

Sheet No.

S
9

BRUNING 44-511 16772