

MAP 26

COUNTY OF SARASOTA

INTER OFFICE MEMO

Merl —
Info &
file w/unrecorded
Plats

TO : Les McKinney, Road & Bridge North

FROM: Dick Emerson, Chief Surveyor

DATE: December 17, 1980

SUBJ: GOODRICH AVENUE R/W NORTH OF MYRTLE AVENUE

I cannot stake the subject R/W as you requested in your memo of December 16th due to our records not reflecting any dedicated or accepted R/W deeds for that road.

I have located an Unrecorded Plat prepared by the Seaboard Air Line Railroad Company in 1954 titled "Industrial Property-Northgate Terminal". This map shows the property between the railroad and Osprey Avenue subdivided into 8 blocks with a total of 45 lots, but this map is no basis for determining dedicated R/W .

By copy of this memo, Jack Clark is advised of the situation should you require his assistance.

ERE:tb

xc: Jack Clark

Dick

UNRECORDED PLAT OF NORTHGATE TERMINAL
SEC. 7, TWP. P. 36S, R6E, 18E
BY S.A.L.R.
MAP # 26

COUNTY OF SARASOTA
INTER OFFICE MEMO

TO : Dick Emerson

FROM: Leslie McKinney *LM*

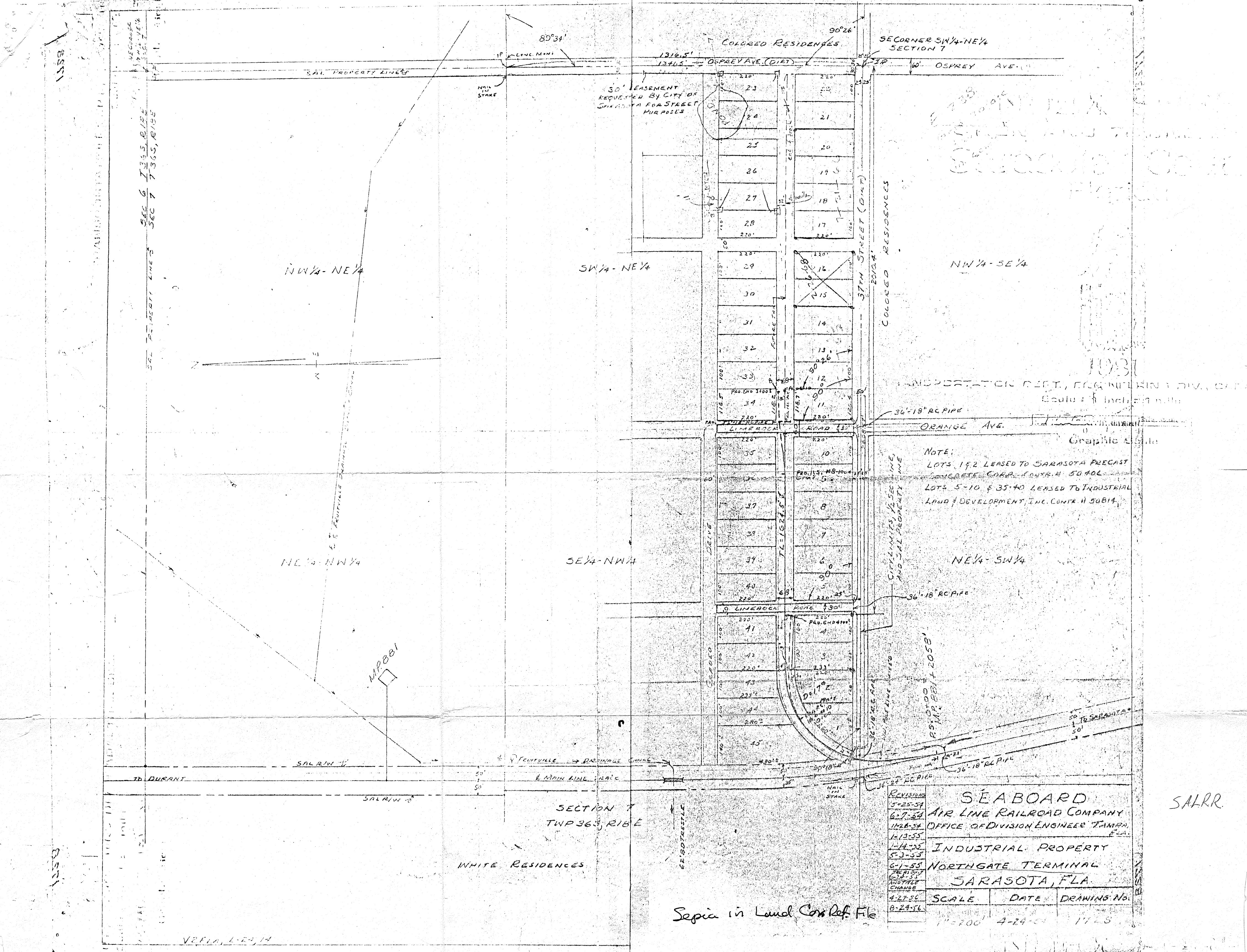
DATE: December 16, 1980

SUBJ: Right of Way Survey - Goodrich Ave.

Dick: At your convenience, please stake out the Right of Way for Goodrich Ave., North of Myrtle Ave.

N ½ Section 7
TWP 36 S RGE 18 E
Sheet 26

LGM/mkb



SEABOARD AIR LINE RAILROAD COMPANY
 OFFICE OF DIVISION ENGINEER TAMPA, FLA.

ADJUSTMENT DEPT., ENGINEERING DIV., TAMPA, FLA.
 Scale 1" = 100'

NOTE:
 LOTS 1 & 2 LEASED TO SARASOTA PRECAST
 CONCRETE CORP. CONTR. H. 50406
 LOTS 5-10 & 35-40 LEASED TO INDUSTRIAL
 LAND DEVELOPMENT, INC. CONTR. H. 50814

CITY LIMITS, FEE LINE
 AND SAL PROPERTY LINE

36" 18" RC PIPE
 36" 18" RC PIPE
 36" 18" RC PIPE

SEABOARD
 AIR LINE RAILROAD COMPANY
 OFFICE OF DIVISION ENGINEER TAMPA, FLA.
 INDUSTRIAL PROPERTY
 NORTHGATE TERMINAL
 SARASOTA, FLA.

REVISION	SCALE	DATE	DRAWING NO.
5-25-54			
6-7-54			
11-28-54			
1-13-55			
1-14-55			
5-3-55			
6-1-55			
8-21-56			
8-24-56			

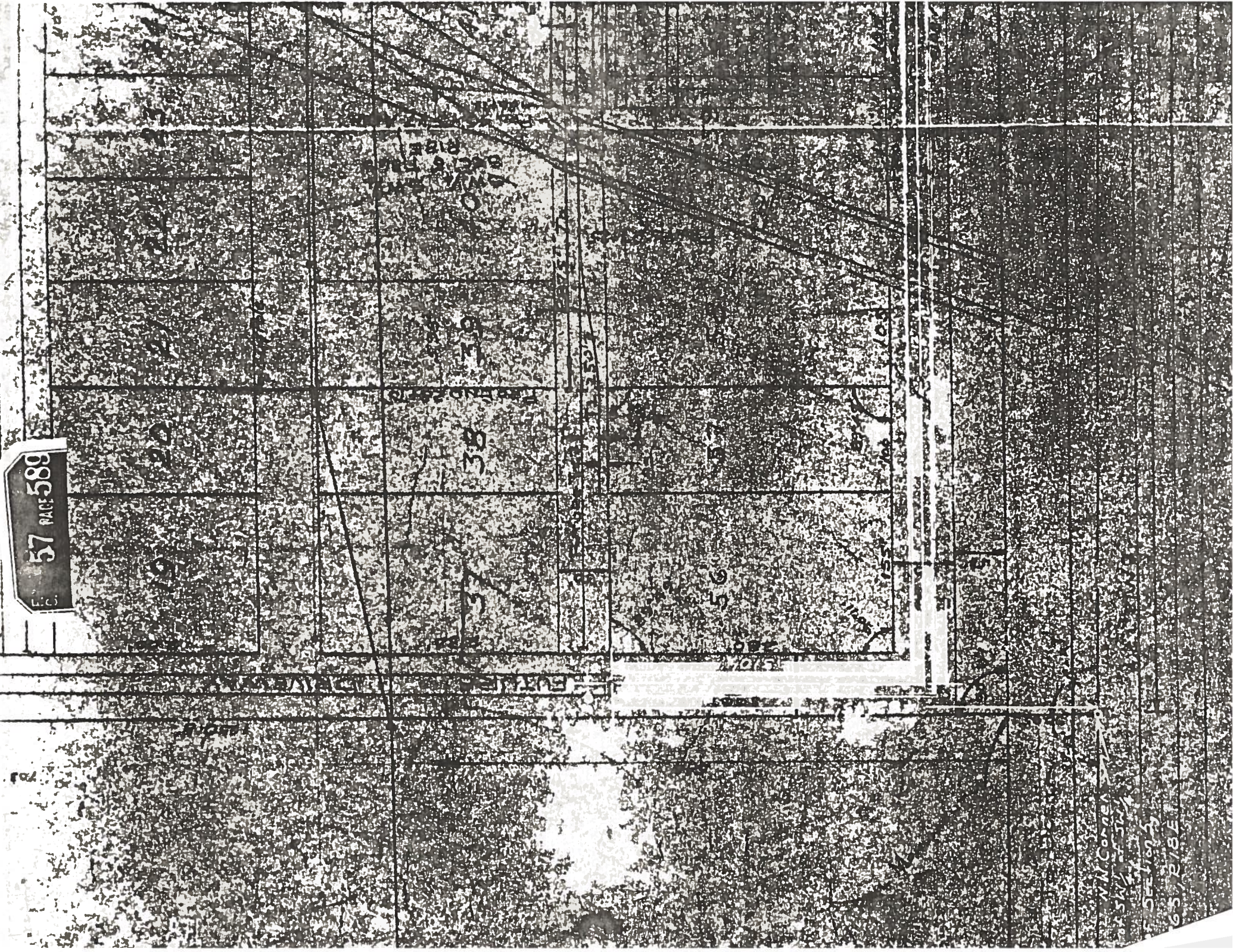
1" = 100' 4-24-54 11-5

SALRR

Spec in Land Con Ref. File

VERIFIED, 4-24-54

57 PAGE 589



M.N. CORNER

BY STATE OF ILL.

SECTION 5

65, 218 E

OFFICE

REST ROOM

RECEPTION

STAIRS

ENTRANCE

LOBBY

CONFERENCE

STORAGE

MEETING

TRAINING

WORKSHOP

LABORATORY

RESEARCH

DEVELOPMENT

TESTING

QUALITY CONTROL

INSPECTION

MAINTENANCE

REPAIRS

RENOVATION

CONSTRUCTION

OPERATIONS

MANAGEMENT

ADMINISTRATION

FINANCE

MARKETING

SALES

DISTRIBUTION

LOGISTICS

WAREHOUSING

TRANSPORTATION

COMMERCE

INDUSTRY

CONSUMER

OFFICE

REST ROOM

RECEPTION

STAIRS

ENTRANCE

LOBBY

CONFERENCE

STORAGE

MEETING

TRAINING

WORKSHOP

LABORATORY

RESEARCH

DEVELOPMENT

TESTING

QUALITY CONTROL

INSPECTION

MAINTENANCE

REPAIRS

RENOVATION

CONSTRUCTION

OPERATIONS

MANAGEMENT

ADMINISTRATION

FINANCE

MARKETING

SALES

DISTRIBUTION

LOGISTICS

WAREHOUSING

TRANSPORTATION

COMMERCE

INDUSTRY

CONSUMER

OFFICE

REST ROOM

RECEPTION

STAIRS

ENTRANCE

LOBBY

CONFERENCE

STORAGE

MEETING

TRAINING

WORKSHOP

LABORATORY

RESEARCH

DEVELOPMENT

TESTING

QUALITY CONTROL

INSPECTION

MAINTENANCE

REPAIRS

RENOVATION

CONSTRUCTION

OPERATIONS

MANAGEMENT

ADMINISTRATION

FINANCE

MARKETING

SALES

DISTRIBUTION

LOGISTICS

WAREHOUSING

TRANSPORTATION

COMMERCE

INDUSTRY

CONSUMER

OFFICE

REST ROOM

RECEPTION

STAIRS

ENTRANCE

LOBBY

CONFERENCE

STORAGE

MEETING

TRAINING

WORKSHOP

LABORATORY

RESEARCH

DEVELOPMENT

TESTING

QUALITY CONTROL

INSPECTION

MAINTENANCE

REPAIRS

RENOVATION

CONSTRUCTION

OPERATIONS

MANAGEMENT

ADMINISTRATION

FINANCE

MARKETING

SALES

DISTRIBUTION

LOGISTICS

WAREHOUSING

TRANSPORTATION

COMMERCE

INDUSTRY

CONSUMER

OFFICE

REST ROOM

RECEPTION

STAIRS

ENTRANCE

LOBBY

CONFERENCE

STORAGE

MEETING

TRAINING

WORKSHOP

LABORATORY

RESEARCH

DEVELOPMENT

TESTING

QUALITY CONTROL

INSPECTION

MAINTENANCE

REPAIRS

RENOVATION

CONSTRUCTION

OPERATIONS

MANAGEMENT

ADMINISTRATION

FINANCE

MARKETING

SALES

DISTRIBUTION

LOGISTICS

WAREHOUSING

TRANSPORTATION

COMMERCE

INDUSTRY

CONSUMER

OFFICE

REST ROOM

RECEPTION

STAIRS

ENTRANCE

LOBBY

CONFERENCE

STORAGE

MEETING

TRAINING

WORKSHOP

LABORATORY

RESEARCH

DEVELOPMENT

TESTING

QUALITY CONTROL

INSPECTION

MAINTENANCE

REPAIRS

RENOVATION

CONSTRUCTION

OPERATIONS

MANAGEMENT

ADMINISTRATION

FINANCE

MARKETING

SALES

DISTRIBUTION

LOGISTICS

WAREHOUSING

TRANSPORTATION

COMMERCE

INDUSTRY

CONSUMER

OFFICE

REST ROOM

RECEPTION

STAIRS

ENTRANCE

LOBBY

CONFERENCE

STORAGE

MEETING

TRAINING

WORKSHOP

LABORATORY

RESEARCH

DEVELOPMENT

TESTING

QUALITY CONTROL

INSPECTION

MAINTENANCE

REPAIRS

RENOVATION

CONSTRUCTION

OPERATIONS

MANAGEMENT

ADMINISTRATION

FINANCE

MARKETING

SALES

DISTRIBUTION

LOGISTICS

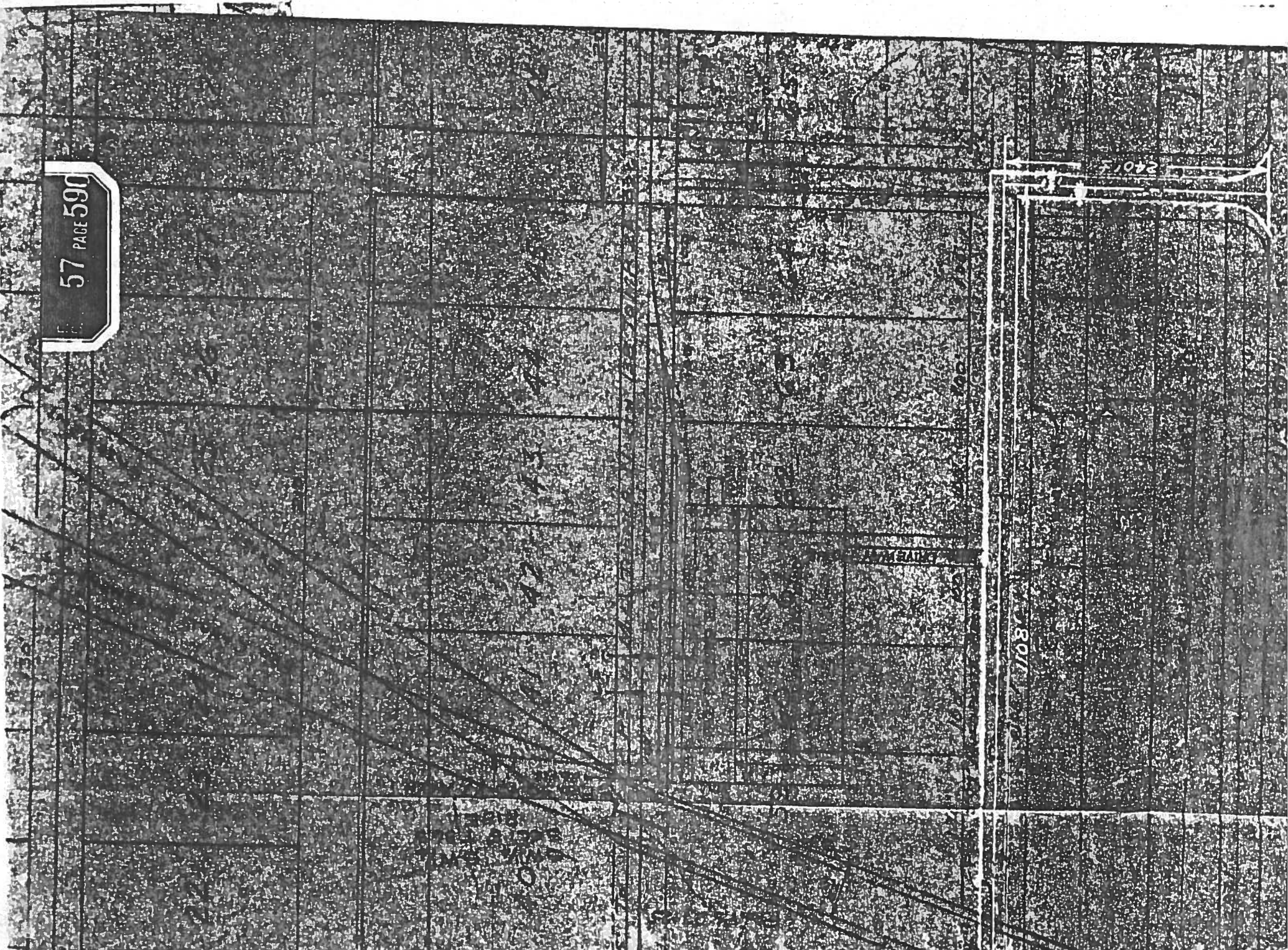
WAREHOUSING

TRANSPORTATION

COMMERCE

INDUSTRY

CONSUMER



703

57 PAGE 595

19 20 21 22

37 38 39 40

41 42 43 44

45 46 47 48

49 50 51 52

53 54 55 56

57 58 59 60

PL 15027

PL 15027

PL 15027

103

103

153

50 1/2

DEPT. OF AGRICULTURE

PL 15027

103

103

103

103

103

FUTURE DESIGN

103

103

103

103

103

103

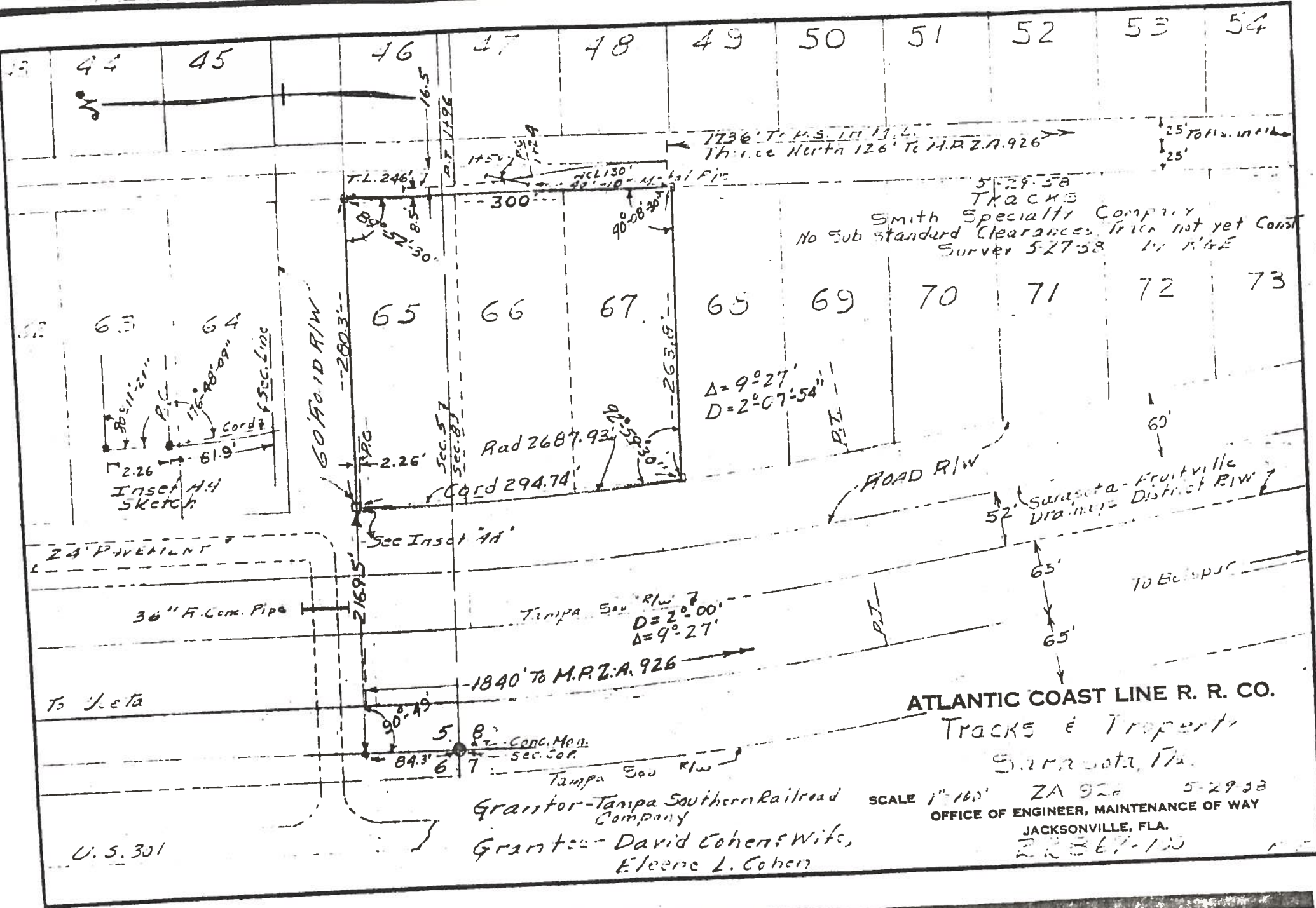
103

103

103

103

Mr. J. H. ...
RFE 108 page 10



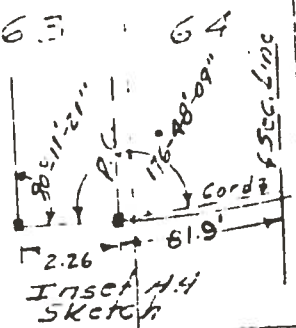
44 45 46 47 48 49 50 51 52 53 54

N

1736' T.P.S. 111 11.2.
Thence North 126' To M.R.Z.A. 926

25' to 112.11111
25'

5-29-58
TRACKS
Smith Specialty Company
No Sub standard Clearances. Trks not yet Const
Survey 5-27-58 by RFE



Inset A-4
Sketch

60' ROAD R/W

65

66

67

68

69

70

71

72

73

$\Delta = 9^{\circ} 27'$
 $D = 2^{\circ} 07' 54''$

Rad 2687.93'

Cord 294.74'

ROAD R/W

Sarasota-Fruitville
Drainage District R/W

24\"/>

36\"/>

Tampa Sou R/W
 $D = 2^{\circ} 00'$
 $\Delta = 9^{\circ} 27'$

1840' To M.R.Z.A. 926

ATLANTIC COAST LINE R. R. CO.

TRACKS & PROPERTY

Sarasota, Fla.

SCALE 1"=100' ZA 926 5-29-58
OFFICE OF ENGINEER, MAINTENANCE OF WAY
JACKSONVILLE, FLA.

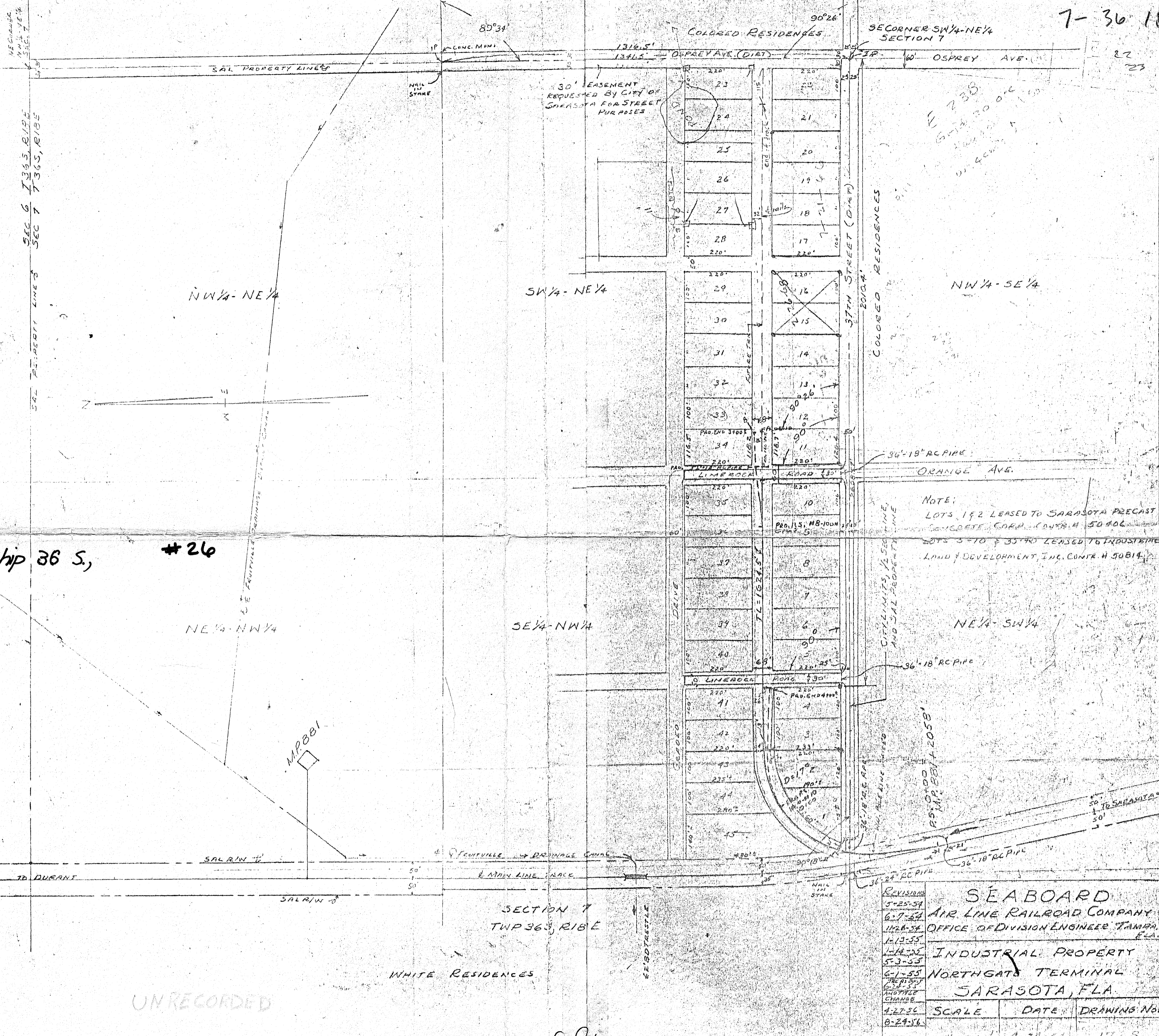
Grantor-Tampa Southern Railroad Company

Grantee-David Cohen & Wife,
Eleanor L. Cohen

U.S. 301

7-36-18

1251



Section 7, Township 36 S,
Range 18 E.

#26

MAP #524, 26

UNRECORDED

Sepia in land cor. ref. file

SEABOARD AIR LINE RAILROAD COMPANY OFFICE OF DIVISION ENGINEER TAMPA, FLA.		
INDUSTRIAL PROPERTY NORTHGATE TERMINAL SARASOTA, FLA.		
SCALE	DATE	DRAWING No.
1"=200'	4-24-54	17-8

COPY FROM BLUELINE © HEBB'S NORTH OFFICE

VRFLA, L-23, 14