

MAP 51

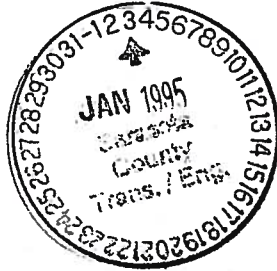
SARASOTA COUNTY GOVERNMENT
SARASOTA, FLORIDA

GLAZE

1/4/95



Transportation Department



1301 Cattlemen Road
Sarasota, Florida 34232
Telephone (813) 378-6180
FAX (813) 378-6019

January 3, 1994

Mr. James E. Toale, P.A.
1605 Main Street, Suite 705
Sarasota, Florida 34236

RE: East Avenue North of Bee Ridge Road

*Harry - please be sure our
maintenance inventory instructions to
personnel are modified to reflect
this change - TJB.*

Dear Mr. Toale:

The purpose of this letter is to clarify the December 28, 1994 letter on the same subject.

Your letter to John Goodknight, Transportation Director, dated December 15, 1994, requested information regarding construction and maintenance by Sarasota County on lands shown on a survey drawing by Mosby engineering (Project No. 23014, dated November 12, 1991).

Transportation Department records indicate that this parcel includes a portion of East Avenue, which runs from the north right-of-way line of Bee Ridge Road, northerly, for approximately 295'. The roadway is maintained by Sarasota County and was last resurfaced in 1971. Based on action taken in 1992, all of the subject property was incorporated and now lies within the City Limits of Sarasota.

Since this area is not within the City Limits, maintenance responsibilities should have been transferred to the City of Sarasota. Sarasota County Transportation Department records will be changed to indicate this portion of East Avenue is no longer maintained by the County.

Please contact this office if you need further information.

Sincerely,

T. J. Ballenger, P.E., PVS
Manager, Development Services Division

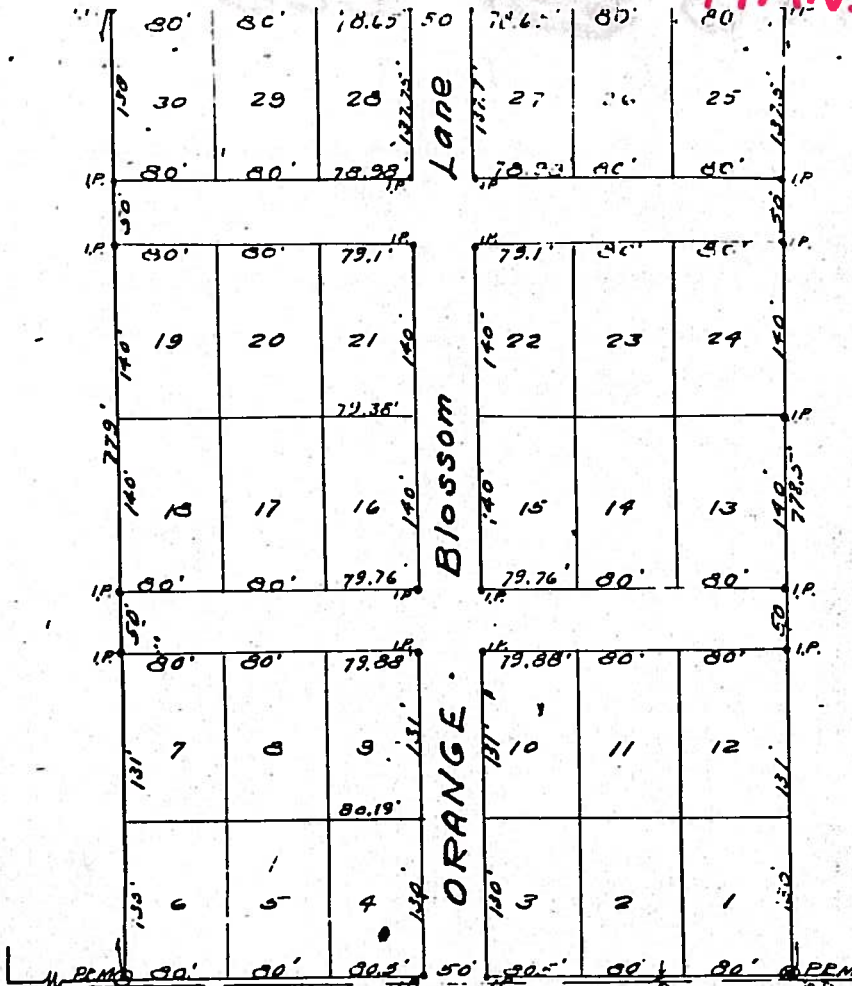
cc: John C. Goodknight
Harry W. Glaze
Rick Winters, City of Sarasota Engineering

Don Galloway
Tom McCaughey

HANS

37 PAGE 309

Tamiami Trail



BEE RIDGE ROAD
 S.W. Cor. Sect. 32, Twp. 36° Rge. 18E
 S. line Lot 12

SUBURBAN ESTATES

A SUBDIVISION IN THE
 S.W. 1/4 SECT. 32, TWP. 36° RGE. 18E
 CITY OF SARASOTA
 SARASOTA COUNTY, FLA.

Scale 1"=100'

January 1952

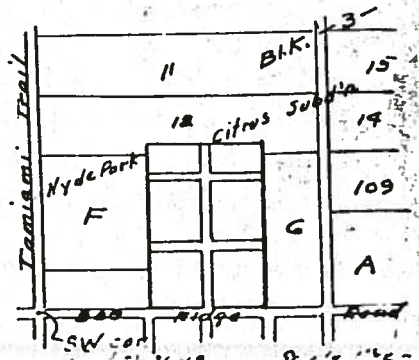
Earl Inguies, Engineers



GRAPHIC SCALE



LOCATION SKETCH



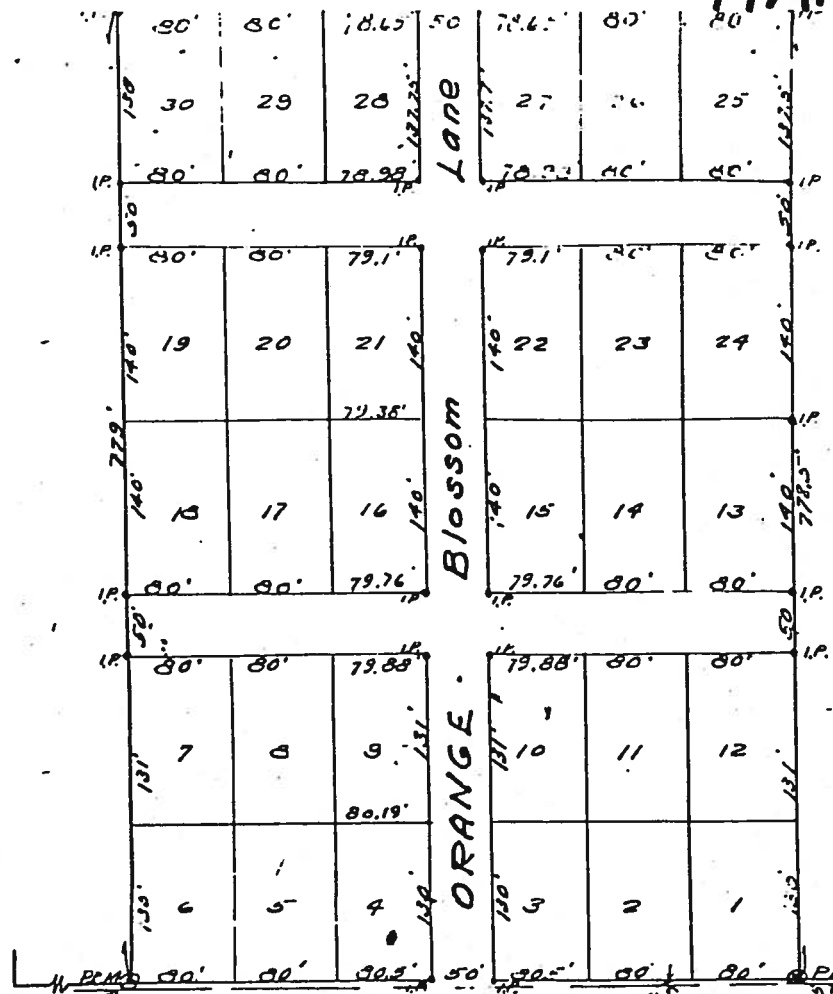
Note:-
 Permanent Reference Monuments - P.M. ©
 Iron Age Black corners - I.P. ©

RECORDED
 AND
 FILED
 JAN 2 1952
 1952

HANS

37 PAGE 309

Tamiami Trail



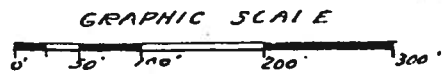
SUBURBAN ESTATES

A SUBDIVISION IN THE
 S.W. 1/4 SECT. 32, TWP. 36, RGE. 10E
 CITY OF SARASOTA
 SARASOTA COUNTY, FLA.

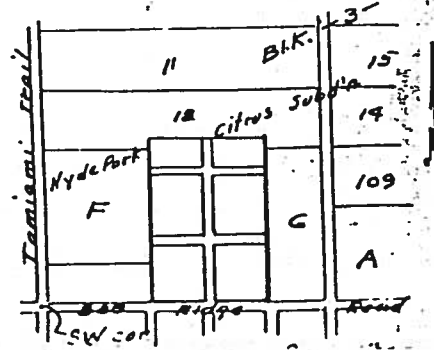
Scale 1"=100'

January 1952

Earl Ingers, Engineers



LOCATION SKETCH

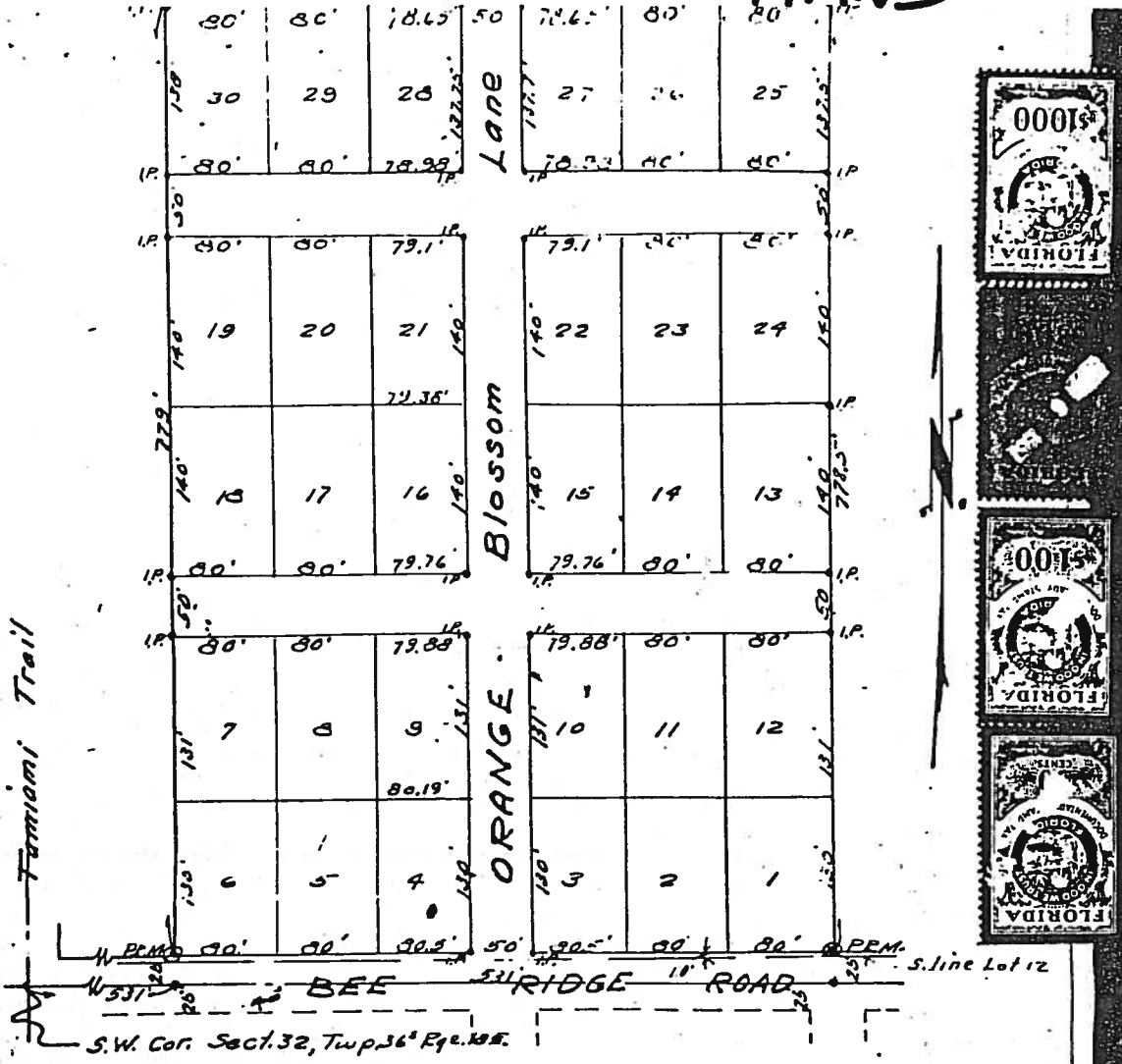


Notes:-
 Permanent Reference Monuments - P.P.M. ©
 Iron Pipe Block corners - I.P. ©

RECORDED AND FILED
 1952 JAN 6 PM 12
 1952

HANS

37 PAGE 309



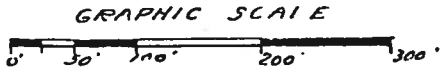
SUBURBAN ESTATES

A SUBDIVISION IN THE
 S.W. 1/4 SECT. 32, TWP. 36^E, RGE. 10^E
 CITY OF SARASOTA
 SARASOTA COUNTY, FLA.

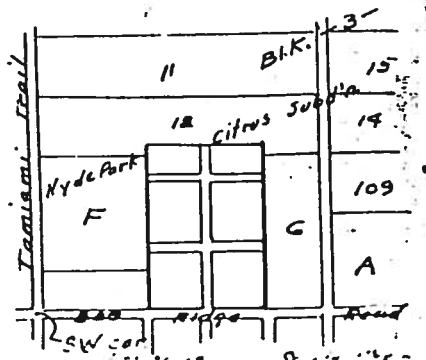
Scale 1"=100'

January 1952

Karl Guizer, Engineers



LOCATION SKETCH



Note:-
 Permanent Reference Monuments - P.P.M. ©
 Iron Age Block corners - I.P. ©

RECORDED
 AND
 FILED
 1952 JAN 29 PM 2:12
 17-1093