

N 1/2 2-40-20 SHT. NO. 795

CO. SEC. COR. MON. SHT. NO. 354

S 1/2 3-40-20 SHT. NO. 798

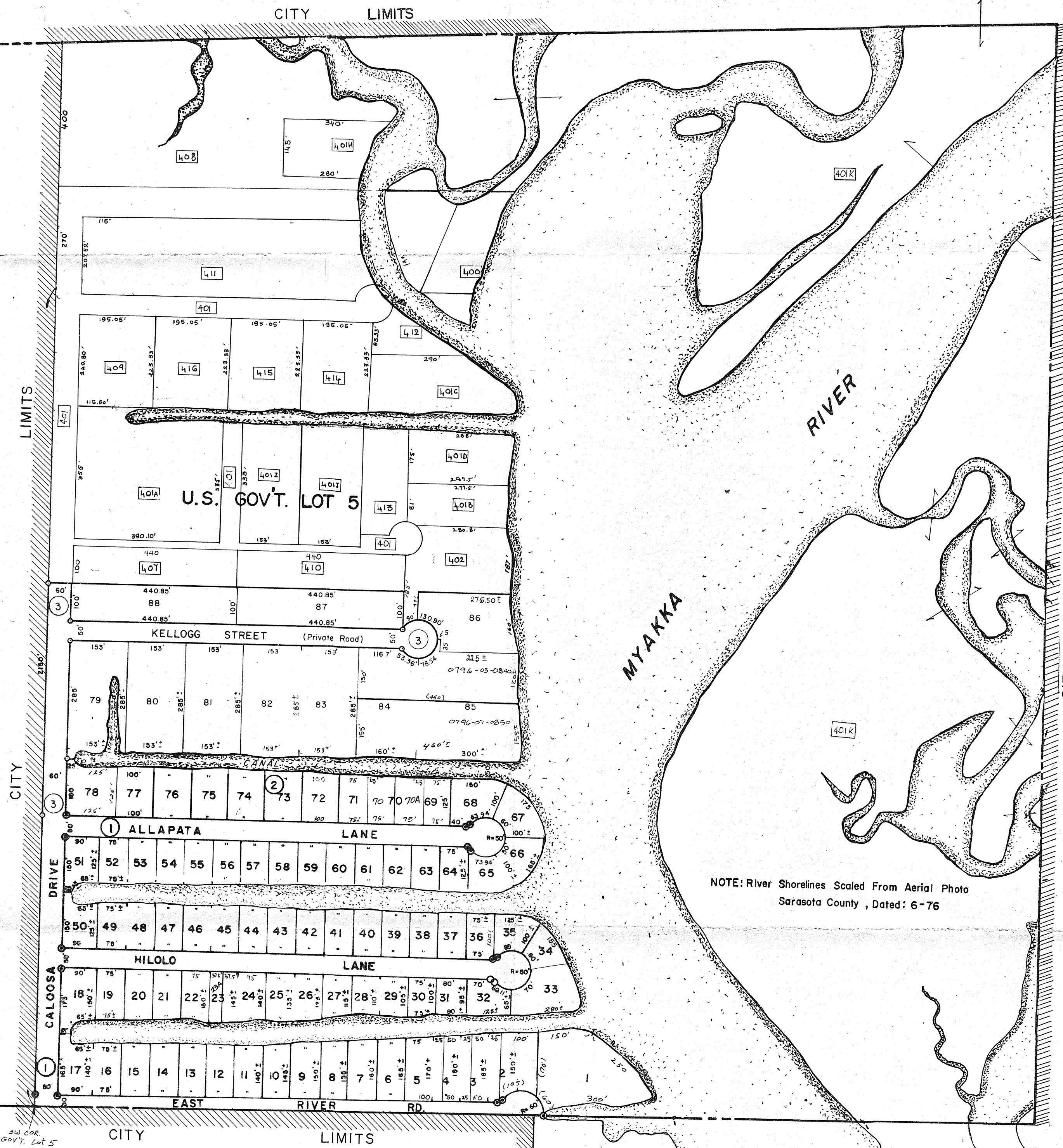
CO. SEC. COR. MON. SHT. NO. 355

CITY LIMITS

U. S. GOV'T. LOT 3

U. S. GOV'T. LOT 4

0795-00-1002  
CONT.



S 1/2 1-40-20 SHT. NO. 794

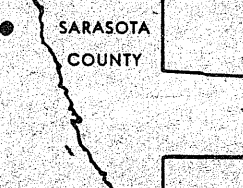
**SUBDIVISION INDEX**

Area code	No.	Name	
1 -	1	TARPON POINT UNIT NO. 1	10 / 55
2 -	2	TARPON POINT UNIT NO. 2	18 / 7
2 -	3	TARPON POINT UNIT NO. 3	21 / 15

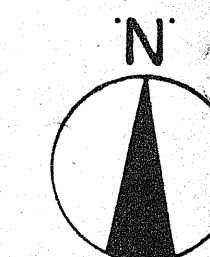
N 1/2 11-40-20 SHT. NO. 813



**John W. Mikos, C.F.A.**  
PROPERTY APPRAISER  
SARASOTA COUNTY, FLORIDA



NOTE: This sheet drawn for "Visual" purposes only. Dimensions shown are taken from Legal Descriptions, when possible, but Section Line dimensions are unknown. Therefore drawing may not be to scale.



- LEGEND**
- PERM. REF. MON. (for Subs.)
  - CONC. MON.
  - IRON PIPE
  - CO. SEC. COR. MON.

DATE	ALTERATIONS DESCRIPTION
JUNE 80	TARPON POINT UNIT 2 ADDED
JULY 75	REVISION
MAR 1971	TARPON POINT UNIT 3
JULY 75	Split Lot 85 Tarpon Point, ORB 1061/343
JULY 75	Split Lot 87 Tarpon Point, ORB 1051/341
SEPT 75	Added City Limit, North Port Charlotte
APR 1976	UPDATED
03-93	SHORE LINE

SARASOTA COUNTY FLORIDA  
SCALE: 1"=200'  
JULY 1966

**S 1/2 SECTION 2  
TWP. 40 S. RGE. 20 E.**

SHT. NO.  
**796**

RECEIVED  
DEC 13 1996  
SURVEY/MAPPING SECTION

RECEIVED  
DEC 13 1996  
SURVEY/MAPPING SECTION

RAAI FILE CORP. IRVING, CA  
E.H. 22

RECEIVED  
DEC 13 1996  
SURVEY/MAPPING SECTION