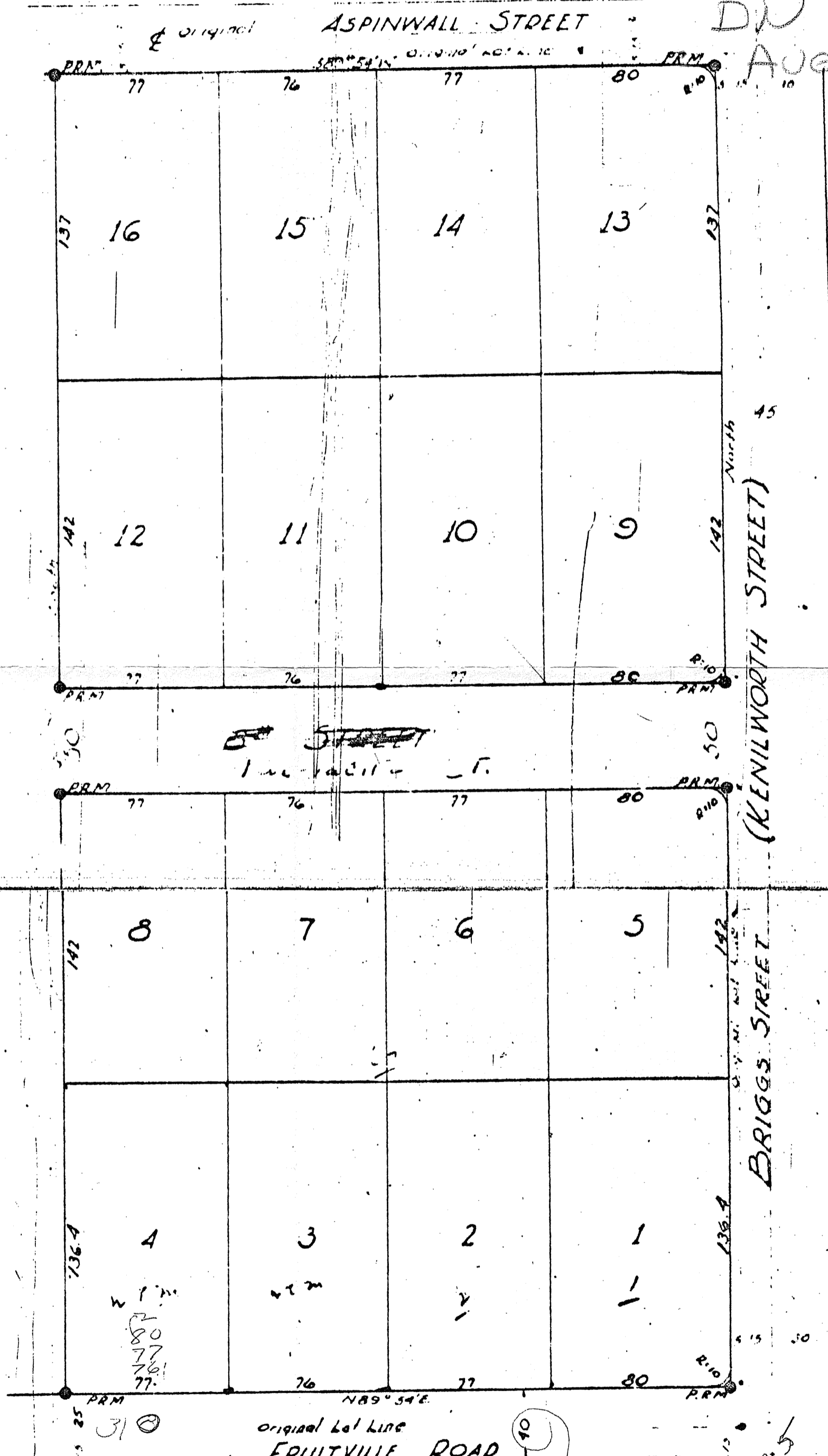


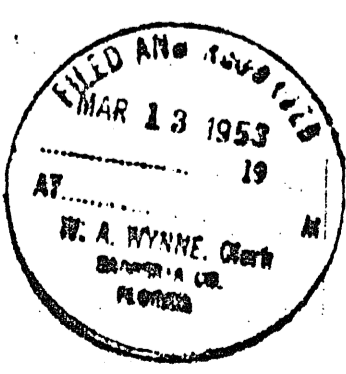
UNRECORDED SUBDIVISION

20-36-18 53

DW
Aug 76



J. LEWIS COBIA
 REG. LAND SURVEYOR
 September 11, 1952



KENILWORTH

IN SECTION 20 TWP 36 SOUTH RANGE 18 EAST

Being a subdivision of the East 1/2 of Blocks 38 and 47 of Lord's Addition to the Town of Sarasota Florida, as recorded in Plat Book 1 Page 194 of Public Records of Manatee County Fla.

September 11, 1952

Sarasota County, Florida.

62.5
 31.0
 31.5
 31.5
 DEED 305 PAGE 60
 S-34

-Desoto Part Subdivision-

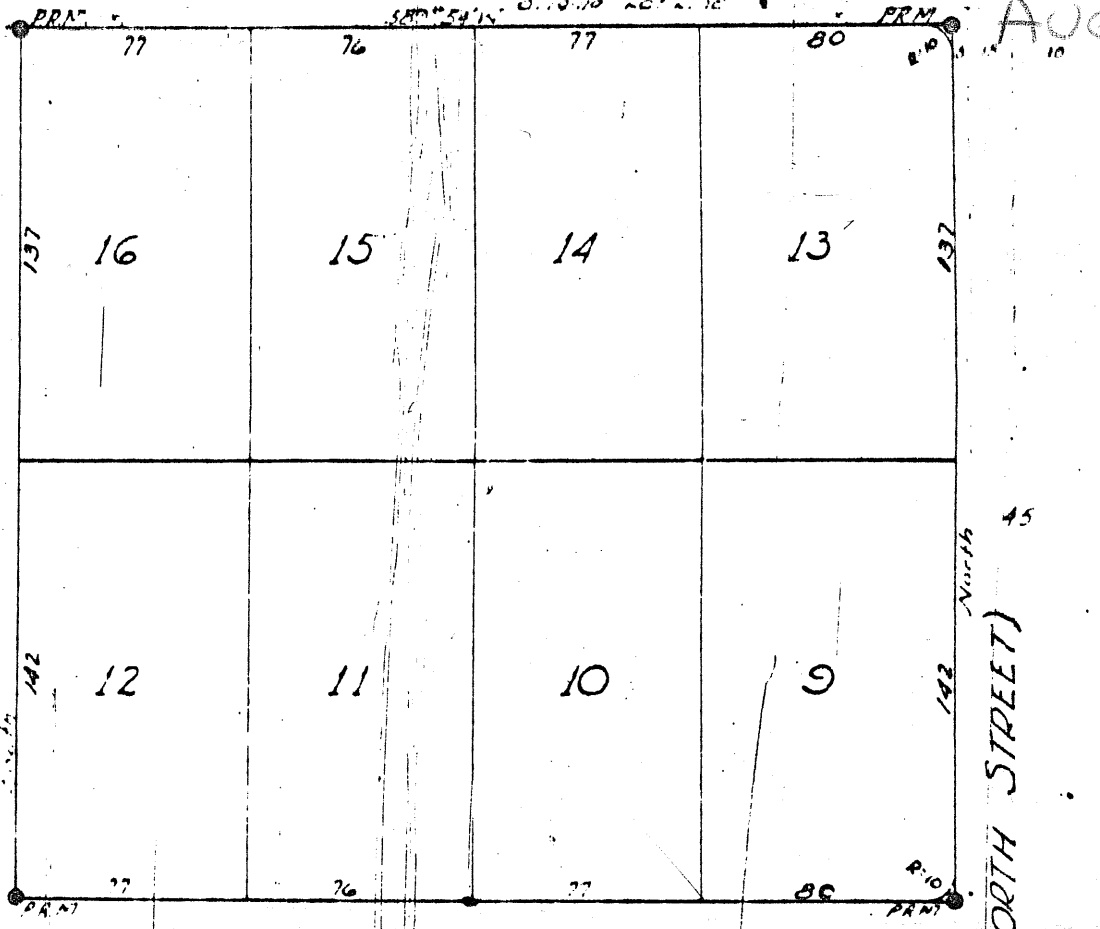
UNRECORDED SUBDIVISION

20-36-18 334

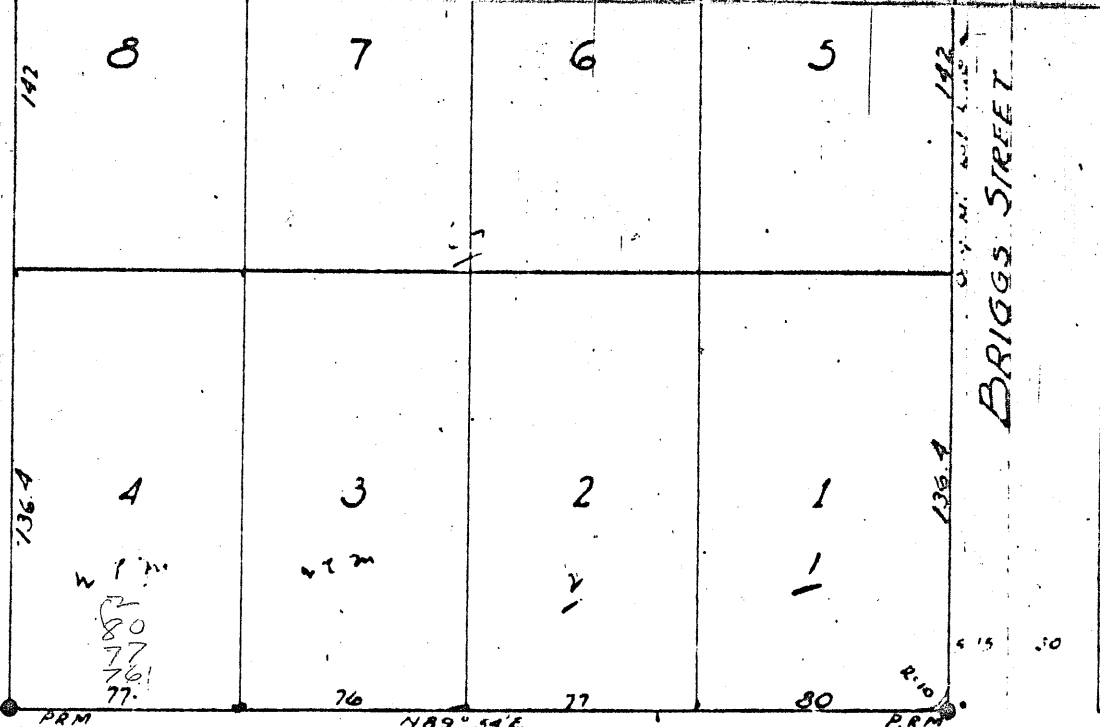
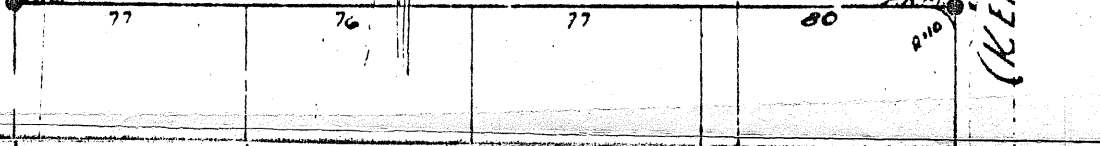
original ASPINWALL STREET

DN

AUG 76



50 STREET



original Lot Line FRUITVILLE ROAD

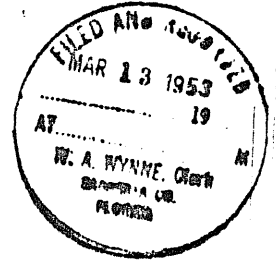
KENILWORTH

IN SECTION 20 TWP 36 SOUTH RANGE 18 EAST

Being a subdivision of the East 1/2 of Blocks 38 and 47 of Lord's Addition to the Town of Sarasota Florida, as recorded in Plat Book 1 Page 194 of Public Records of Manatee County Fla.

September 11, 1952

Sarasota County, Florida.



FILED 305 PAGE 60

S-34

FILED 305 PAGE 59

J. LEWIS COBIA
 REG. LAND SURVEYOR
 September 11, 1952

-Desoto Part Subdivision-

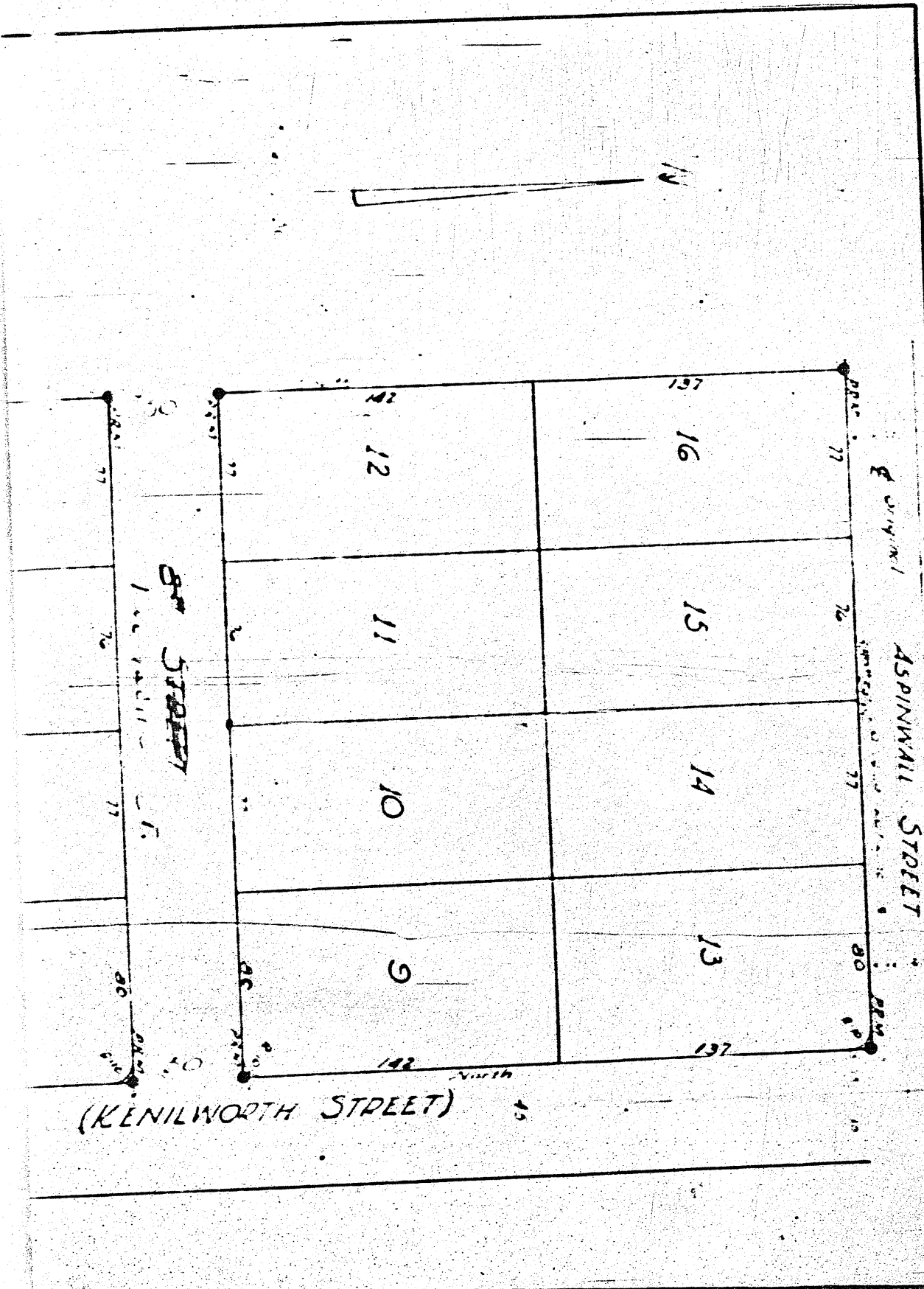
305

(Kenilworth)
unrecorded

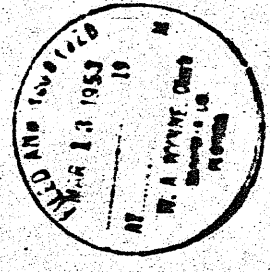
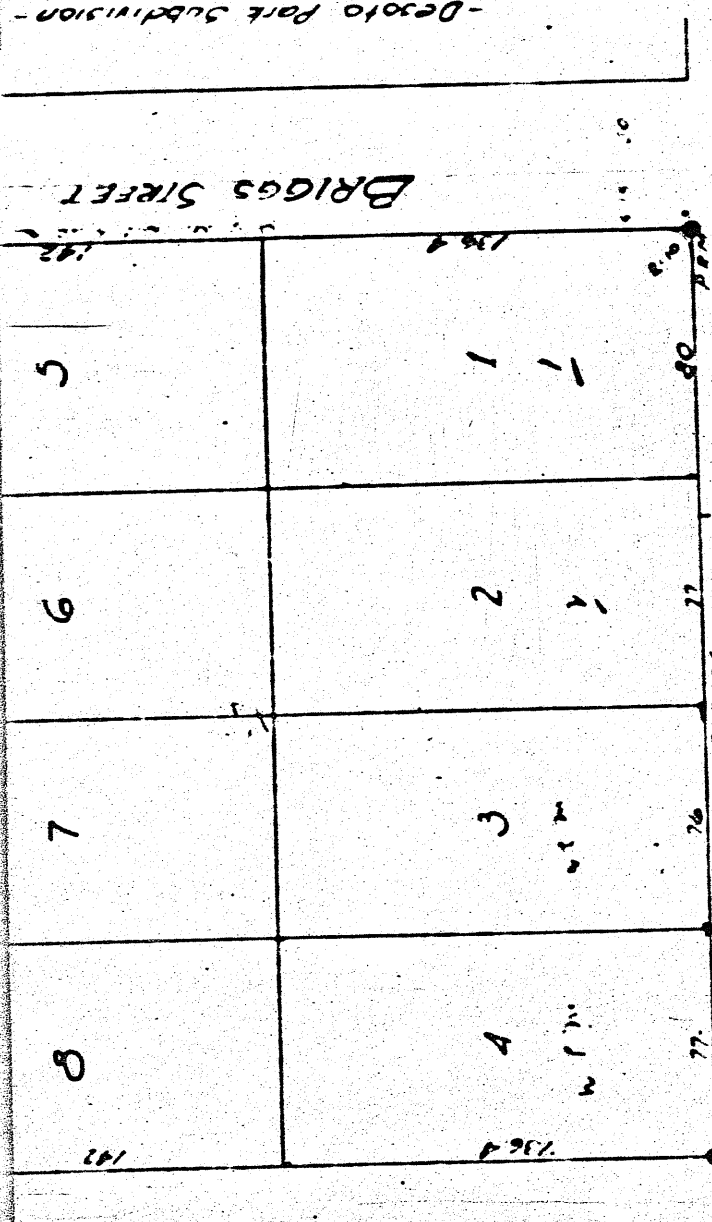
D/B 305/59-6
20-36-18

MAP

305 PAR 59



J. LEWIS COOIA
 REG. LAND SURVEYOR
 September 11, 1952



KENILWORTH
 IN SECTION 20 TWP 36 SOUTH RANGE 18 EAST
 Being a subdivision of the East 1/2 of Block 47 of Lord's
 Addition to the Town of Sarasota Florida, as recorded in
 Plat Book 1 Page 194 of Public Records of Manatee County Fla.
 September 11, 1952
 Sarasota County, Florida.

09 305 60

305

(Kenilworth)
 (unrecorded)

D.B. 305/59-60

Map # S-34