

A SUBDIVISION OF THE NE 1/4 OF SEC. 21 TWP. 36S.~R. 18E. SUPERSEDING AND VACATING PLAT OF "VILLA SERENA" AS RECORDED IN P.B. 1, P. 122

Filed Dec. 2, 1943; P.B. 4, P. 29  
(No Block No on Plat)

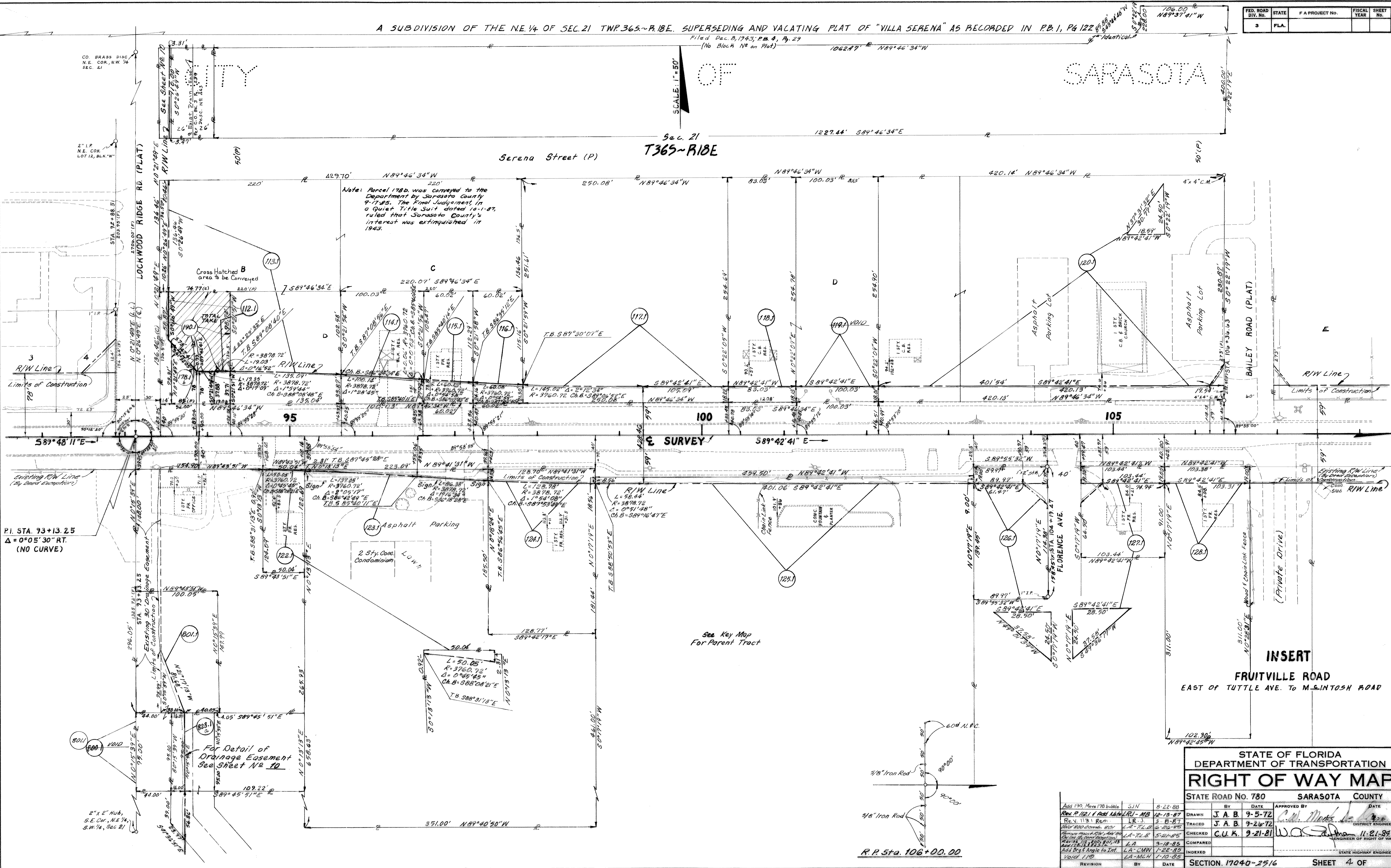
FED. ROAD DIV. No.	STATE	F A PROJECT No.	FISCAL YEAR	SHEET No.
3	FLA.			

SCALE: 1" = 50'

SARASOTA

Sec. 21  
T36S~R18E

Serena Street (P)



Note: Parcel 178B was conveyed to the Department by Sarasota County 9-17-85. The Final Judgment in a Quiet Title Suit dated 10-1-87, ruled that Sarasota County's interest was extinguished in 1943.

Cross Hatched B area to be conveyed

TOTAL TAKE

R/W Line

Limits of Construction

R/W Line

Limits of Construction

R/W Line

Limits of Construction

589°48'11"E

Existing R/W Line (By Deed Exception)

P.I. STA. 93+13.25

Δ = 0°05'30" RT. (NO CURVE)

Existing 30' Driveway Easement

Limits of Construction

For Detail of Drainage Easement See Sheet No. 10

2" x 2" NUB, S.E. COR., N.E. 1/4, S.W. 1/4, Sec. 21

2" I.P. N.E. COR. LOT 12, BLK. "W"

CO. BRASS DISC N.E. COR., N.W. 1/4 SEC. 21

LOCKWOOD RIDGE RD. (PLAT)

See Sheet No. 7

50' (P)

589°42'41" E

Survey

R/W Line

Limits of Construction

See Key Map For Parent Tract

Chain Link Fence

CONC. FOUNTAIN & PLANTER

WOOD FENCE

Private Drive

Asphalt Parking

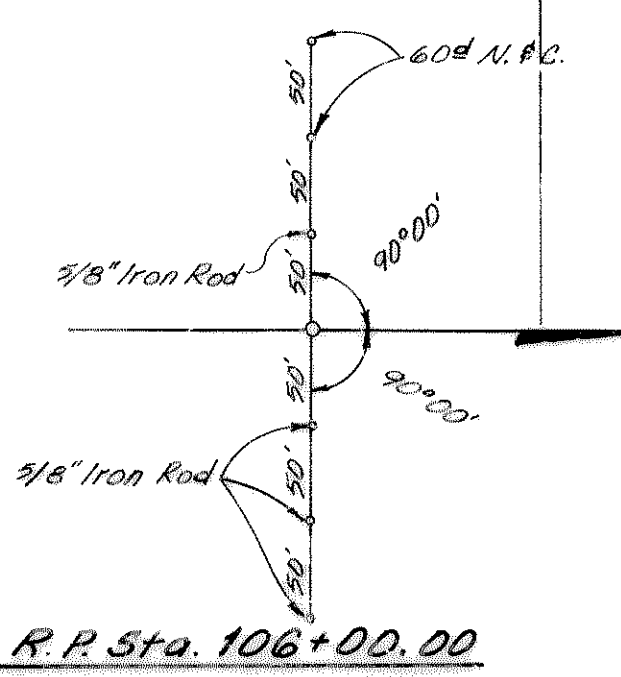
2 Sty. Cond. Condominium

1 STY. FR. RES.

1 STY. FR. RES.

INSERT  
FRUITVILLE ROAD  
EAST OF TUTTLE AVE. TO M-S INTOSH ROAD

STATE OF FLORIDA DEPARTMENT OF TRANSPORTATION			
<b>RIGHT OF WAY MAP</b>			
STATE ROAD No. 780		SARASOTA COUNTY	
Drawn	J. A. B.	9-5-72	Approved
Traced	J. A. B.	9-20-72	Date
Checked	C. U. K.	9-21-81	DATE
Compared			
Indexed			
REVISION	BY	DATE	
SECTION 17040-2516		SHEET 4 OF	



W.P.I. No. 117038







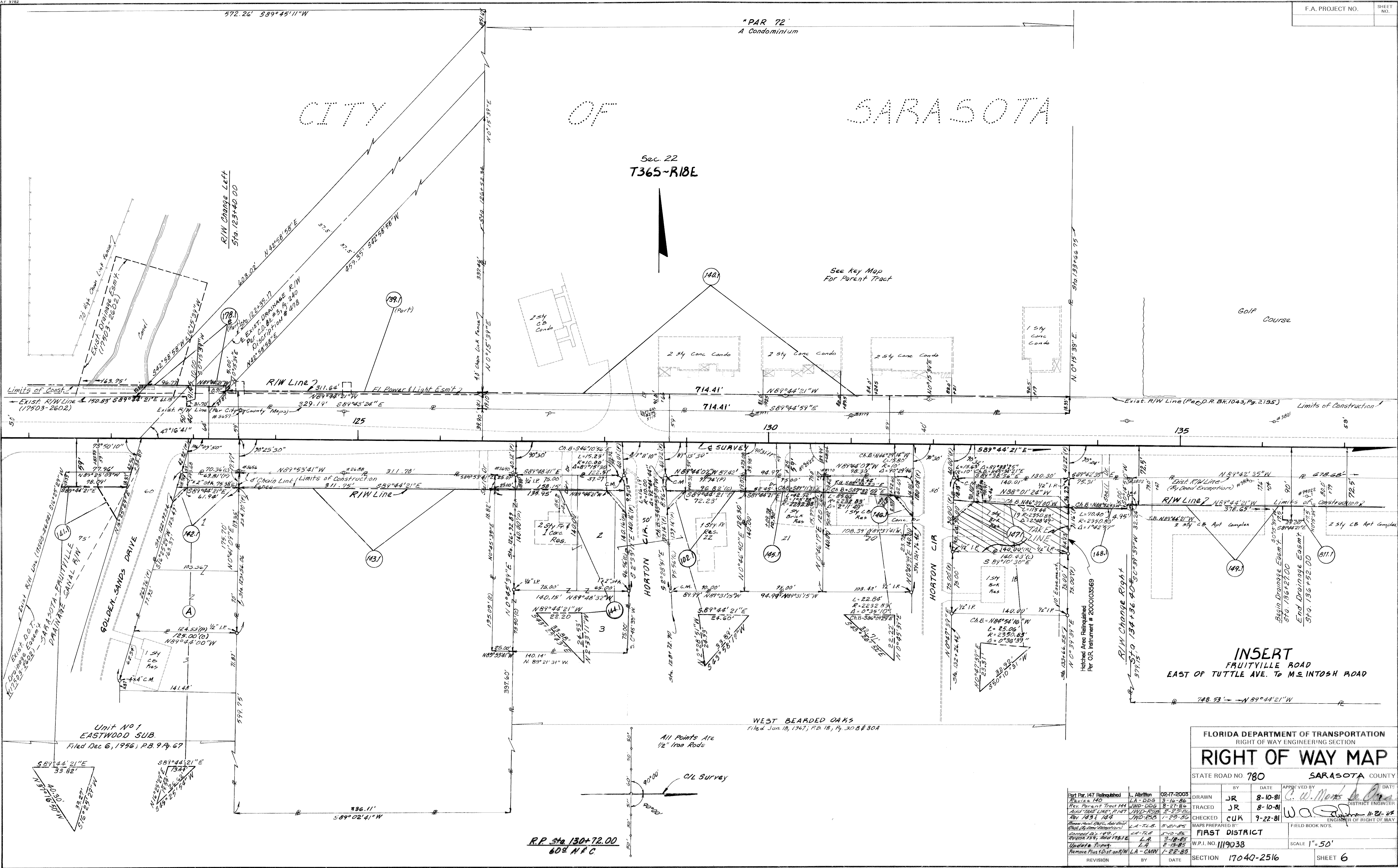
# CITY OF SARASOTA

Sec. 22  
T365-R18E

"PAR 72"  
A Condominium

See Key Map  
For Parent Tract

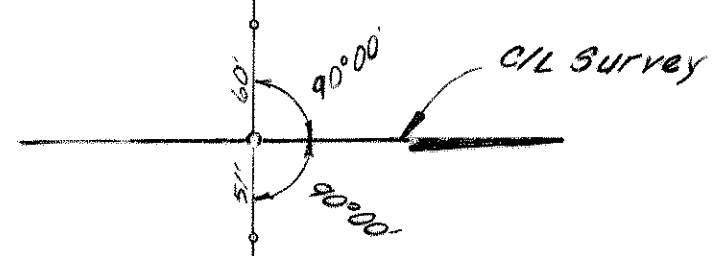
Golf Course



**INSERT**  
FRUITVILLE ROAD  
EAST OF TUTTLE AVE. TO M. INTOSH ROAD

WEST BEARDED OAKS  
Filed Jan. 18, 1967, P.B. 18, P. 30 B & 30A

All Points Are  
1/2" Iron Rods



R.P. Sta 130+72.00  
60± N/C

FLORIDA DEPARTMENT OF TRANSPORTATION RIGHT OF WAY ENGINEERING SECTION			
<b>RIGHT OF WAY MAP</b>			
STATE ROAD NO. 780		SARASOTA COUNTY	
BY	DATE	APPROVED BY	DATE
JR	8-10-81	<i>C. W. Marks</i>	
TRACED	JR	8-10-81	DISTRICT ENGINEER
CHECKED	CUK	9-22-81	ENGINEER OF RIGHT OF WAY
MAPS PREPARED BY		FIELD BOOK NO'S.	
FIRST DISTRICT			
W.P.I. NO. 1119038		SCALE 1" = 50'	
REVISION	BY	DATE	SECTION 17040-2516 SHEET 6

Part Par. 147 Reintegrated	L. Albritton	02-17-2005
Revise 140	LA-DDG	9-16-86
Rev. Parent Tract 144	WNO-DDG	8-27-86
EXIST. DRAINAGE LINES, P. 147	WNO-RSBA	2-27-86
Rev. 143 & 144	WNO-RSBA	1-29-86
Remove Parent Tract, Add Child (By State Department)	LA-TLS	5-21-85
Consolidate 147	LA-TLS	5-10-85
Revise 144, Add 178.1E	LA	3-18-85
Update to Topog.	LA	2-13-85
Remove Plus 50.00 Stationing	LA-CMN	1-22-85

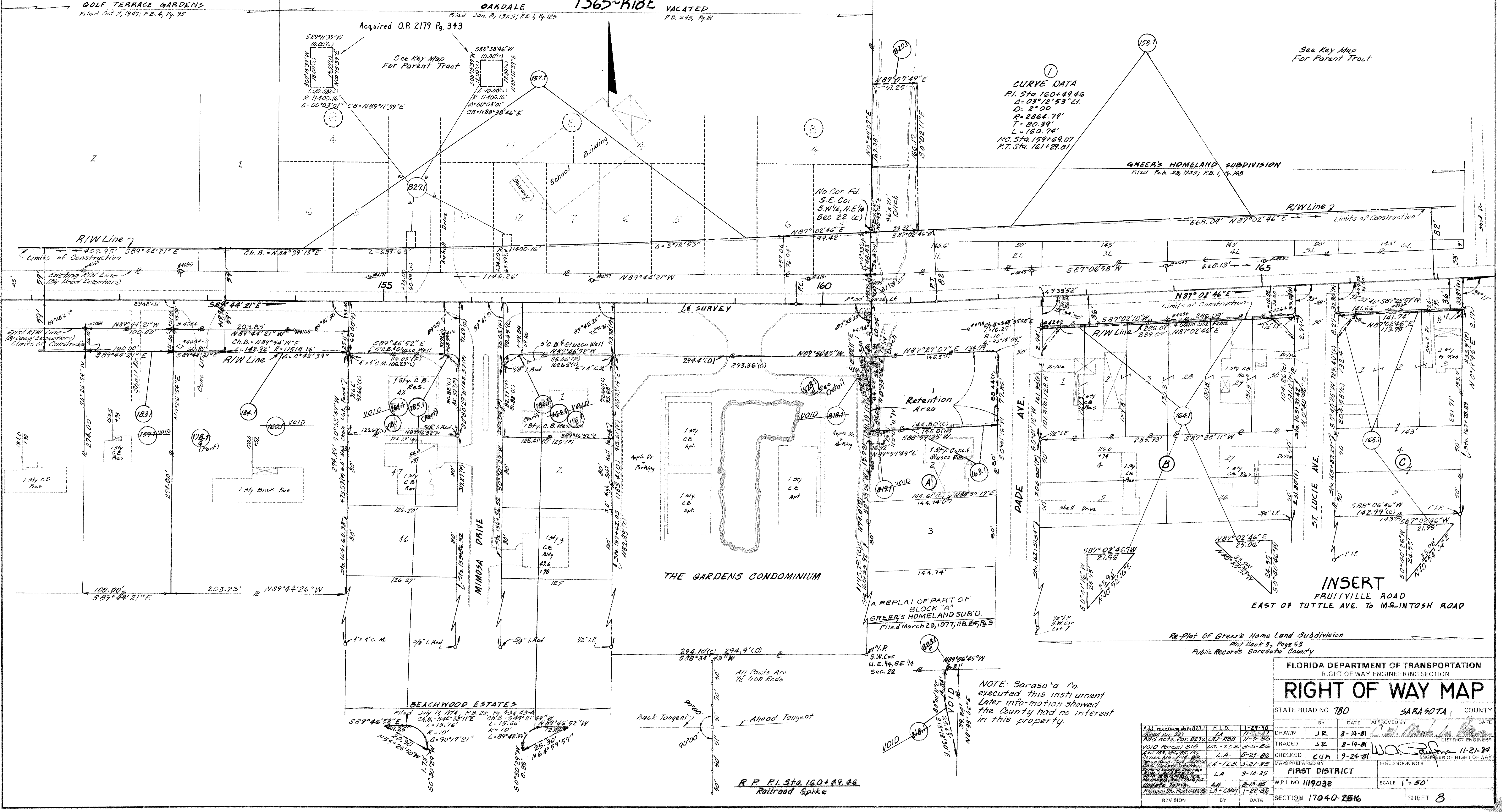






# CITY OF SARASOTA

Sec 22  
**T365-R18E**  
VACATED



**CURVE DATA**  
 P.I. Sta. 160+49.46  
 Δ = 03°12'53" Lt.  
 D = 2°00'  
 R = 2866.78'  
 T = 80.39'  
 L = 160.74'  
 P.C. Sta. 159+69.07  
 P.T. Sta. 161+29.81

See Key Map For Parent Tract

**INSERT**  
 FRUITVILLE ROAD  
 EAST OF TUTTLE AVE. TO M-INTOSH ROAD

Re-Plot of Green's Home Land Subdivision  
 Plat Book 3, Page 63  
 Public Records Sarasota County

A REPLAT OF PART OF  
 BLOCK "A"  
 GREEN'S HOMELAND SUB'D.  
 Filed March 29, 1977, P.B. 24, P. 3

NOTE: Sarasota Co  
 executed this instrument.  
 Later information showed  
 the County had no interest  
 in this property.

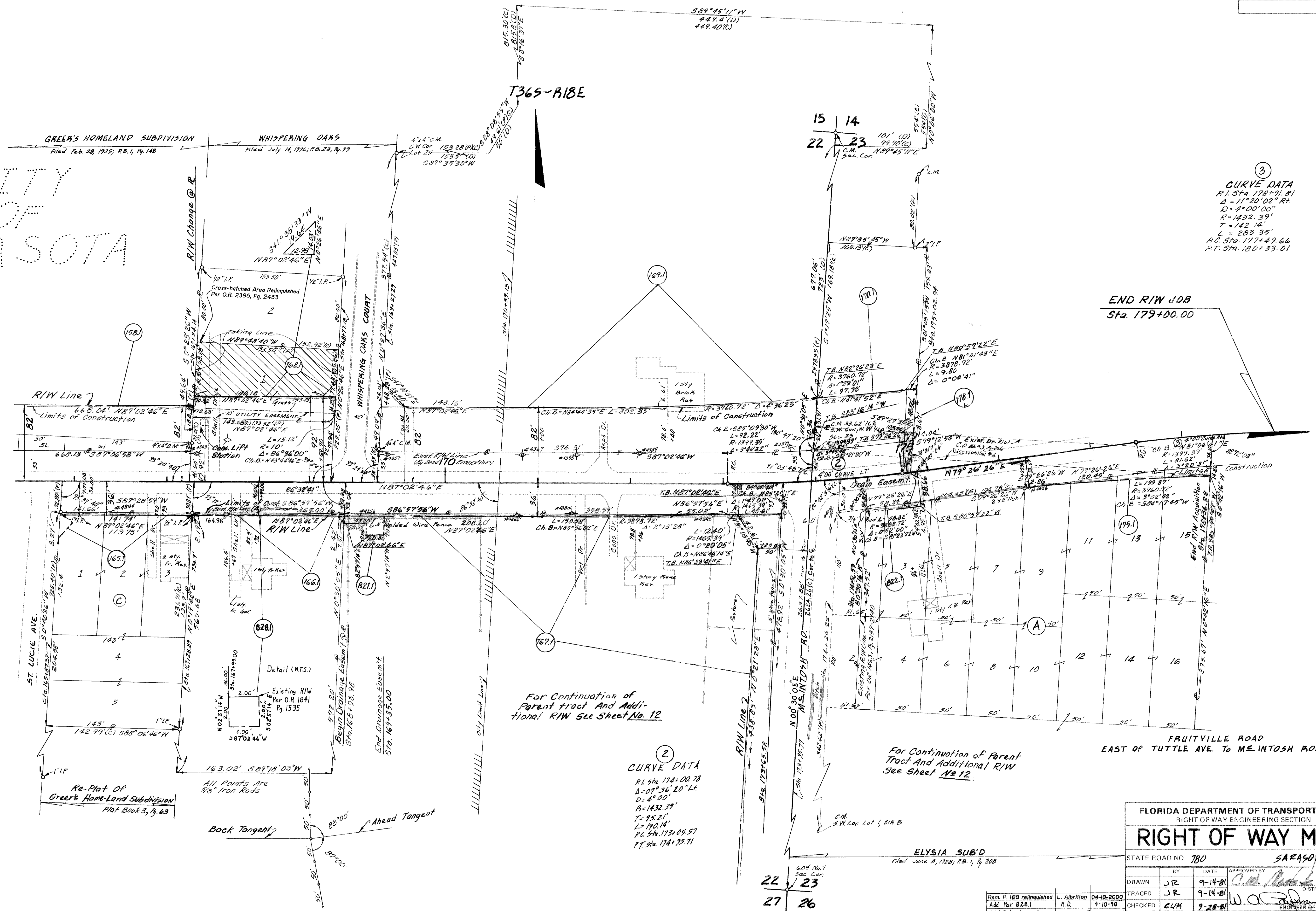
R.P. P.I. Sta. 160+49.46  
 Railroad Spike

FLORIDA DEPARTMENT OF TRANSPORTATION		RIGHT OF WAY ENGINEERING SECTION	
<b>RIGHT OF WAY MAP</b>			
STATE ROAD NO. 780		SARASOTA COUNTY	
BY	DATE	APPROVED BY	DATE
JR	8-14-81	<i>W. J. ...</i>	11-21-84
TRACED	JR	DISTRICT ENGINEER	
CHECKED	CJK	ENGINEER OF RIGHT OF WAY	
MAPS PREPARED BY		FIELD BOOK NO.	
<b>FIRST DISTRICT</b>			
W.P.I. NO. 119038		SCALE 1" = 50'	
SECTION 17040-2516		SHEET 8	

REVISION	BY	DATE
1	JR	11-29-80
2	JR	11-2-81
3	JR	8-5-82
4	JR	5-21-86
5	JR	5-21-85
6	JR	3-18-85
7	JR	2-18-85
8	JR	1-22-85



CITY OF SARASOTA



③  
**CURVE DATA**  
 P.I. Sta. 178+91.81  
 Δ = 11°20'02" RT  
 D = 4°00'00"  
 R = 1432.39'  
 T = 142.12'  
 L = 283.35'  
 P.C. Sta. 177+49.66  
 P.T. Sta. 180+33.01

END R/W JOB  
 Sta. 179+00.00

For Continuation of  
 Parent tract And Addition!  
 R/W See Sheet No. 12

②  
**CURVE DATA**  
 P.I. Sta. 174+00.78  
 Δ = 07°36'20" LT  
 D = 4°00"  
 R = 1432.39'  
 T = 95.21'  
 L = 190.14'  
 P.C. Sta. 173+05.57  
 P.T. Sta. 174+95.71

For Continuation of Parent  
 Tract And Additional R/W  
 See Sheet No. 12

FRUITVILLE ROAD  
 EAST OF TUTTLE AVE. TO ME INTOSH ROAD

Re-Plat of  
 Greer's Home-Land Subdivision  
 Plat. Book 3, Pg. 63

All Points Are  
 7/8" Iron Rods

R.P. PI Sta. 174+00.78  
 Railroad Spike

FLORIDA DEPARTMENT OF TRANSPORTATION RIGHT OF WAY ENGINEERING SECTION			
<b>RIGHT OF WAY MAP</b>			
STATE ROAD NO. 780		SARASOTA COUNTY	
DRAWN	BY	DATE	APPROVED BY
JR	JR	9-14-81	C.M. [Signature]
TRACED	JR	9-14-81	DISTRICT ENGINEER
CHECKED	CJM	9-28-81	W.A. [Signature]
MAPS PREPARED BY			
FIRST DISTRICT			
W.P.I. NO. 1119038			
SECTION 17040-2516			
SHEET 9			

Item P. 168 relinquished	L. Albritton	04-10-2000
Add Par. 828.1	M.D.	4-10-90
Add Take Line P. 168	CR - T.L.B.	11-5-85
Remove Point P. 168	LA - T.L.B.	5-21-85
Revised P. 168	LA	3-18-85
Revised P. 170.1	LA - CMW	1-22-85
Revised P. 170.1	LA - CMW	1-22-85

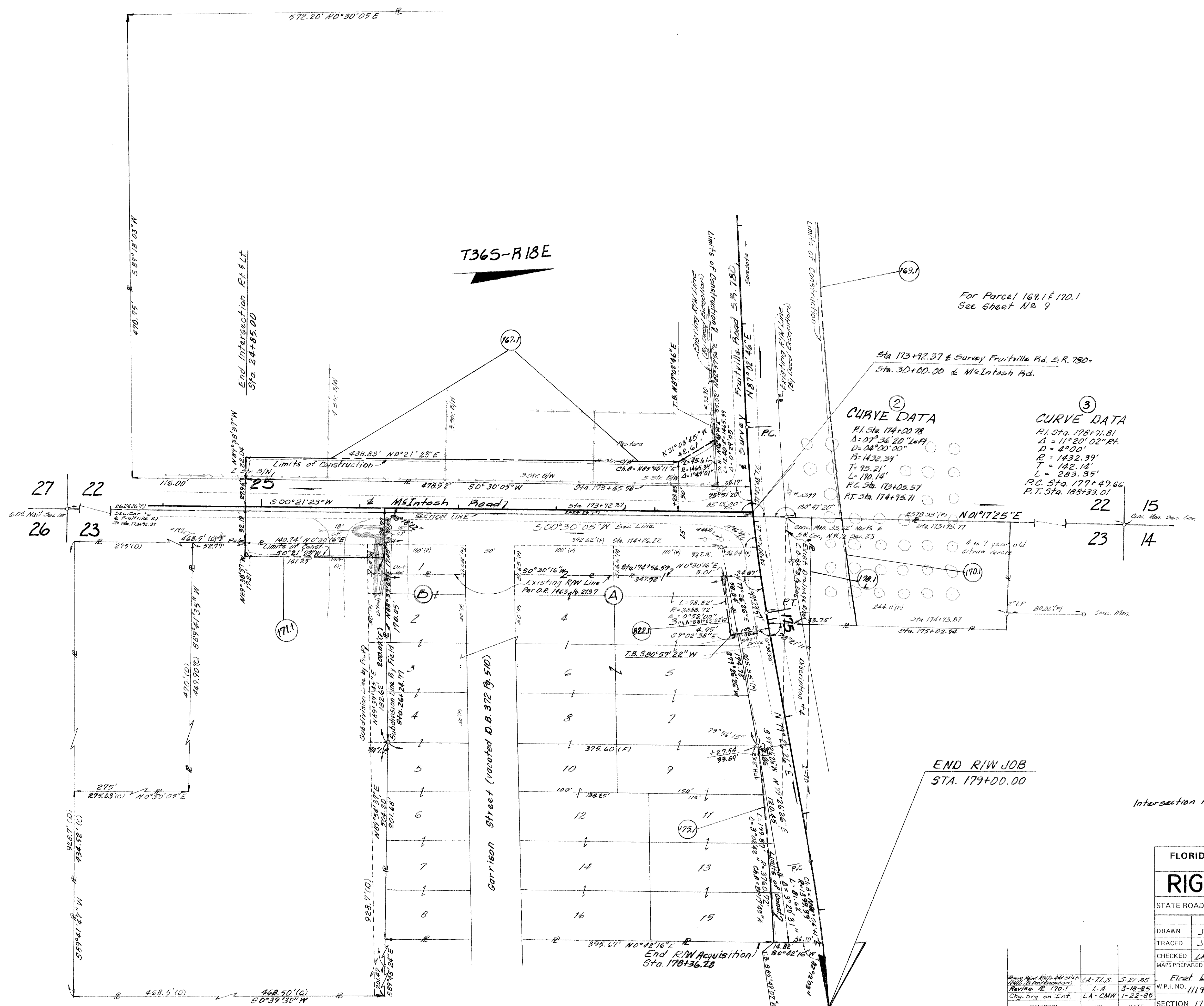












FLORIDA DEPARTMENT OF TRANSPORTATION	
RIGHT OF WAY ENGINEERING SECTION	
RIGHT OF WAY MAP	
STATE ROAD NO. 780	Sarasota COUNTY
BY JR	DATE 7-13-84
TRACED JK	DATE 7-13-84
CHECKED LRJ	DATE 7-28-84
MAPS PREPARED BY First District	
W.P.I. NO. 111903B	SCALE 1" = 50'
SECTION 17040-2516	SHEET 12

POLYTRACE 033

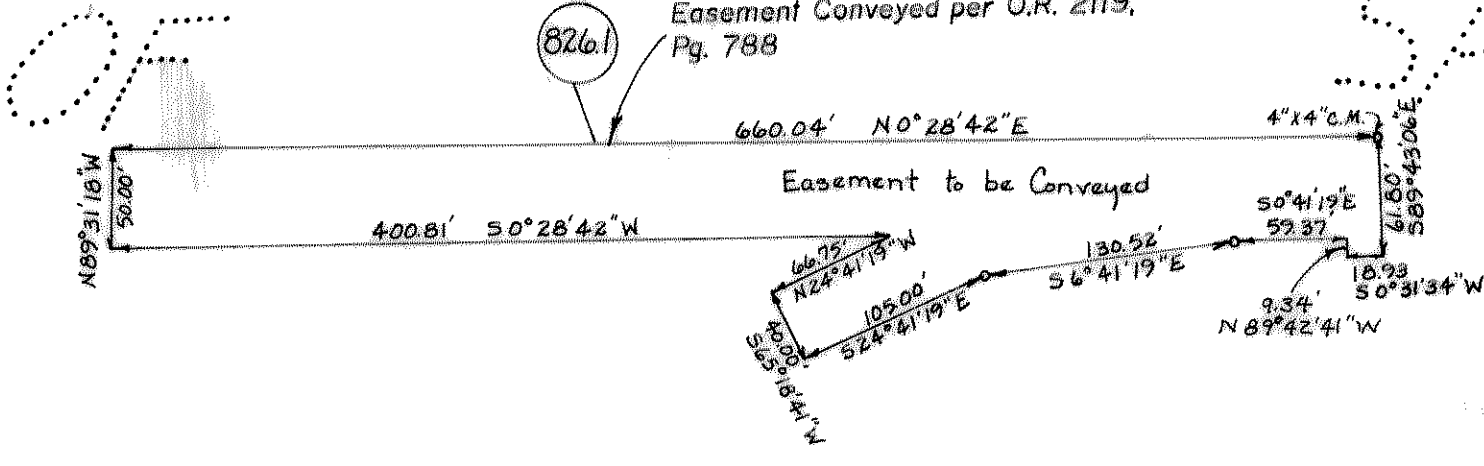


Sec 21  
T36S-R18E

CITY

SARASOTA

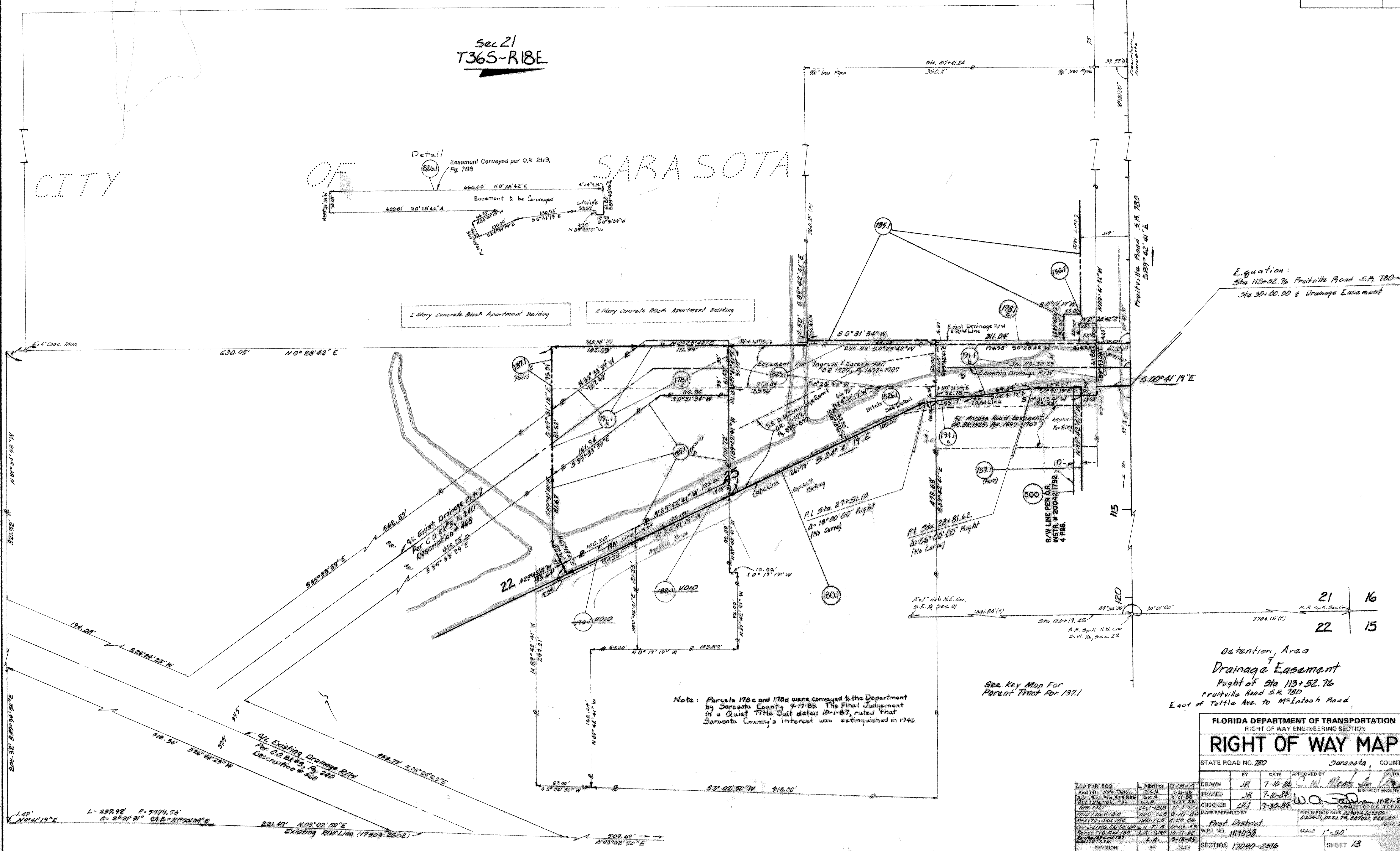
Detail  
Easement Conveyed per O.R. 2119,  
Pg. 788



2 Story Concrete Block Apartment Building

2 Story Concrete Block Apartment Building

Equation:  
Sta. 113+52.76 Fruitville Road S.R. 780 =  
Sta. 30+00.00 ± Drainage Easement



Note: Parcels 178c and 178d were conveyed to the Department by Sarasota County 9-17-85. The Final Judgement in a Quiet Title Suit dated 10-1-87, ruled that Sarasota County's interest was extinguished in 1943.

See Key Map For Parent Tract Per. 137.1

Detention Area  
Drainage Easement  
Right of Sta 113+52.76  
Fruitville Road S.R. 780  
East of Tuttle Ave. to McIntosh Road

FLORIDA DEPARTMENT OF TRANSPORTATION  
RIGHT OF WAY ENGINEERING SECTION

RIGHT OF WAY MAP

STATE ROAD NO. 780 Sarasota COUNTY

BY DATE APPROVED BY DATE

DRAWN JR 7-10-84 C.W. [Signature] DISTRICT ENGINEER

TRACED JR 7-10-84 W.A. [Signature] ENGINEER OF RIGHT-OF-WAY

CHECKED LRJ 7-30-84 [Signature] DISTRICT ENGINEER

MAPS PREPARED BY First District

FIELD BOOK NO'S 023451, 023452, 023453, 023454, 023455, 023456, 023457, 023458, 023459, 023460

SECTION 17040-2516 SHEET 13

ADD PAR. 500	L. Albritton	12-06-04
ADD 191c, Note, Detail	G.K.M.	9-21-85
REV 178c, 178d, 225, 824	G.K.M.	9-21-85
REV 178c, 178d, 178d	G.K.M.	9-21-85
REV 178c, 178d	L.R.J.	11-3-85
REV 178c, 178d	W.A. [Signature]	9-10-85
REV 178c, 178d	W.A. [Signature]	9-20-85
REV 178c, 178d	L.A. [Signature]	11-13-85
REV 178c, 178d	L.A. [Signature]	10-11-85
REV 178c, 178d	L.A. [Signature]	3-18-85

SCALE POLYTRACE 033

L=232.92' R=5779.53'  
Δ=2°21'31" C.B.=N1°52'04"E

Existing R/W Line (17503-2602)

21	16
22	15



**TABLE OF OWNERSHIPS**

PARCEL NO.	SHEET NO.	NAME	AREA TAKEN	REMAINDERS RIGHT	REMAINDERS LEFT	COMMENTS
*** GENERAL NOTE: TRIANGLE SYMBOL (Δ) IN COMMENTS COLUMN MEANS TRIANGULAR CORNER CLIP ***						
100.1	2	Fruitville - Tuttle, Ltd.	11,781 <sup>sq</sup>	0	5,463 Ac.	Encumbered Area 2937 <sup>sq</sup> O.R. 1911, Pg. 2399
101.1	2	James W. Glasser	11,496 <sup>sq</sup>	0	2,143 <sup>sq</sup>	Encumbered Area 2887 <sup>sq</sup> O.R. 1868, Pg. 2422 Unencumbered Area 11,781 <sup>sq</sup> Δ Lot 22-301 <sup>sq</sup>
102.1	6	Margie W. Horton	2,129 <sup>sq</sup>	0	10,710 <sup>sq</sup>	Encumbered Area 724 <sup>sq</sup> Δ 293 <sup>sq</sup> Unencumbered Area 2500 <sup>sq</sup> O.R. 1823, Pg. 1368
103.1	2	Ralph L. Mustrush	3,749 <sup>sq</sup>	0	9,157 <sup>sq</sup>	Encumbered Area 1445 <sup>sq</sup> Δ 284 <sup>sq</sup> Unencumbered Area 5730 <sup>sq</sup> O.R. 1891, Pg. 2834
104.1	2	Helen Marie S. Hall	5,730 <sup>sq</sup>	0	10,710 <sup>sq</sup>	Encumbered Area 1445 <sup>sq</sup> Δ 284 <sup>sq</sup> Unencumbered Area 5730 <sup>sq</sup> O.R. 1891, Pg. 2834
105.1	2	James W. Glasser	5,728 <sup>sq</sup>	0	10,710 <sup>sq</sup>	Encumbered Area 1445 <sup>sq</sup> Δ 284 <sup>sq</sup> Unencumbered Area 5730 <sup>sq</sup> O.R. 1891, Pg. 2834
106.1	2	Sarasota Co. Agricultural Fair Assoc.	1,917 <sup>sq</sup>	0	60,339 Ac.	O.R. 1827, Pg. 1514
107.1	3	James H. Thornton, et ux	11,482 <sup>sq</sup>	0	0.833 Ac.	Encumbered Area 2890 <sup>sq</sup> Unencumbered Area 11,781 <sup>sq</sup> Δ 279 <sup>sq</sup> Δ 290 <sup>sq</sup>
108.1	3	Thomas W. Elbare, et ux	3,015 <sup>sq</sup>	0	5,261 <sup>sq</sup>	Encumbered Area 725 <sup>sq</sup> Δ 284 <sup>sq</sup> Unencumbered Area 3016 <sup>sq</sup>
109.1	3	Michael J. Garvey	2,727 <sup>sq</sup>	0	5,551 <sup>sq</sup>	Encumbered Area 725 <sup>sq</sup> O.R. 1838, Pg. 1757
110.1	3	Attilio Mancusi, et ux	5,734 <sup>sq</sup>	0	0.701 Ac.	Encumbered Area 725 <sup>sq</sup> O.R. 1838, Pg. 1757
111.1	3	Suzanne Garrison Henderson	5,331 <sup>sq</sup>	0	1,498 Ac.	Encumbered Area 2887 <sup>sq</sup> Δ 288 <sup>sq</sup> Δ 759 <sup>sq</sup> Unencumbered Area 5407 <sup>sq</sup> O.R. 1897, Pg. 1832 Total includes Area of P. 178.1
112.1	3, 4, 10	John J. Nevin	2,320 <sup>sq</sup>	0	2,320 <sup>sq</sup>	Along Fruitville-887 Along Leewood-413 O.R. 2100, Pg. 22610
113.1	3, 4, 10	Thomas W. Butler, et al	6,300 <sup>sq</sup>	0	1,657 Ac.	O.R. 1845, Pg. 1718
114.1	4	Robert L. Harding, et ux	3,116 <sup>sq</sup>	0	10,534 <sup>sq</sup>	O.R. 1855, Pg. 765
115.1	4	Joseph W. Owen, et ux	1,985 <sup>sq</sup>	0	6,830 <sup>sq</sup>	O.R. 1873, Pg. 90
116.1	4	David C. Groom	1,359 <sup>sq</sup>	0	1,498 Ac.	O.R. 1859, Pg. 1548
117.1	4	Jack MacQuarrie	4,727 <sup>sq</sup>	0	1,071 Ac.	Void - Combined with 118
118.1	4	Umberto Todaro	5,317 <sup>sq</sup>	0	0.585 Ac.	Triangle = 228 <sup>sq</sup>
119.1	4	John J. Nevin, et ux	4,828 <sup>sq</sup>	0	0.585 Ac.	Void - Combined with 118
120.1	4	First Church of the Nazarene	7,696 <sup>sq</sup>	0	2,456 Ac.	Triangle = 228 <sup>sq</sup>
121.1	7	Roy Starrok, et ux	2,100 <sup>sq</sup>	0	0.629 Ac.	Void - Combined with 178.1
122.1	3, 4, 10	Maxwell Grantham	78 <sup>sq</sup>	0	6,177 <sup>sq</sup>	O.R. 1867, Pg. 1963
123.1	4	Joseph Wrede	1,792 <sup>sq</sup>	0	4,700 Ac.	O.R. 1840, Pg. 2012
124.1	4	William B. Dechart	2,175 <sup>sq</sup>	0	0.561 Ac.	O.R. 1930, Pg. 734
125.1	4	R.B. MacLeod, et al as Trustees	4,127 <sup>sq</sup>	0	92.83 Ac.	Triangle = 349 <sup>sq</sup> O.R. 1909, Pg. 784
126.1	4	James S. Buchanan, et al	2,084 <sup>sq</sup>	0	12,172 <sup>sq</sup>	Triangle = 349 <sup>sq</sup> O.R. 1909, Pg. 784
127.1	4	Estrellita Perez McDowell, Per. Reg.	2,314 <sup>sq</sup>	0	9,064 <sup>sq</sup>	Triangle = 349 <sup>sq</sup> O.R. 1909, Pg. 784
128.1	4	Ronald W. Brown, et al	1,964 <sup>sq</sup>	0	0.734 Ac.	O.R. 1917, Pg. 1807
129.1	5	Alan H. Porter	12,003 <sup>sq</sup>	0	2,968 Ac.	Triangle = 226 <sup>sq</sup> O.R. 1857, Pg. 589
130.1	5	Sarasota County	1,254 <sup>sq</sup>	N/A	N/A	Q.R. 1763, Pg. 213
131.1	5, 1, 11	Burlingame Corporation N.V.	2,671 <sup>sq</sup>	0	3,143 Ac.	Belhaven P. 132 1322 1328 Along Oriole - 1650 <sup>sq</sup> Belhaven P. 132 1333-636 O.R. 1931, Pg. 1402
132.1	5	McDonald's Corporation	1,981 <sup>sq</sup>	0	1,732 Ac.	O.R. 1891, Pg. 2833
133.1	3, 11	Coast Federal Savings Loan Assoc.	4,943 <sup>sq</sup>	0	1,483 Ac.	Along Fruitville-217 <sup>sq</sup> Δ 773 <sup>sq</sup> Along Oriole-1628 <sup>sq</sup> O.R. 1873, Pg. 85
134.1	5, 13	Bobby Jones Apartments, Ltd.	1,428 <sup>sq</sup>	0	14,267 Ac.	O.R. 1905, Pg. 120
135.1	5, 13	Edwin C. Corra	909 <sup>sq</sup>	0	5,635 Ac.	O.R. 1769, Pg. 165
136.1	5, 13	City of Sarasota	500 <sup>sq</sup>	0	N/A	Q.R. 1769, Pg. 165
137.1	5, 13	Tenth Way Corporation	0.927 Ac.	0	15,432 Ac.	Δ 0.918 Ac. Δ 0.918 Ac. C-3866 <sup>sq</sup>
138.1	5	Harry Jacobs, et al	2,253 <sup>sq</sup>	0	10,455 <sup>sq</sup>	Triangle = 394 <sup>sq</sup>
139.1	5, 6	City of Sarasota	10,561 <sup>sq</sup>	0	N/A	Triangle = 476 <sup>sq</sup> O.R. 1769, Pg. 168
140.1	5, 6	Fairway Oaks Condo, Inc.	13,585 <sup>sq</sup>	0	4,984 Ac.	O.R. 1763, Pg. 212
141.1	6	Sarasota County	1,373 <sup>sq</sup>	0	N/A	Triangle = 548 <sup>sq</sup> O.R. 1763, Pg. 212
142.1	6	Michael H. Fustick	1,428 <sup>sq</sup>	0	13,476 <sup>sq</sup>	Triangle = 548 <sup>sq</sup>
143.1	6	Rebecca A. Belier	5,734 <sup>sq</sup>	0	4,892 Ac.	O.R. 1827, Pg. 1512
144.1	6	Margie W. Horton	3,239 <sup>sq</sup>	0	3,239 <sup>sq</sup>	Triangle = 372 <sup>sq</sup>
145.1	6	Judith E. Fouts	1,812 <sup>sq</sup>	0	11,437 <sup>sq</sup>	O.R. 1827, Pg. 1512
146.1	6	Max Schaefer, et ux	2,243 <sup>sq</sup>	0	5,218 <sup>sq</sup>	O.R. 1827, Pg. 1512
147.1	6	Russell E. Wright, et ux	13,650 <sup>sq</sup>	0	0	Whole Take O.R. 1844, Pg. 1436
148.1	6	City of Sarasota	2,757 <sup>sq</sup>	0	N/A	O.R. 1769, Pg. 159
149.1	6, 7	Midwest Arms Assoc., Limited	23,520 <sup>sq</sup>	0	6,461 Ac.	Sarasota County Drainage R/W was part of this parcel
150.1	7	Sarasota County	1,459 <sup>sq</sup>	0	N/A	O.R. 1763, Pg. 211
151.1	7	Ned F. Stewart, et ux	13,538 <sup>sq</sup>	0	2,077 Ac.	O.R. 1920, Pg. 1247
152.1	7	Victer Sebastiani, et al	14,770 <sup>sq</sup>	0	13,530 <sup>sq</sup>	O.R. 1896, Pg. 2473
153.1	7	John J. Nevin, as Bishop of the Diocese of Venice	6,470 <sup>sq</sup>	0	1,185 Ac.	O.R. 1842, Pg. 414
154.1	7	Arnold C. Pierce, et ux	3,500 <sup>sq</sup>	0	0,606 Ac.	O.R. 1917, Pg. 1825
155.1	7	C.B. Frazier, et ux	2,400 <sup>sq</sup>	0	2,629 Ac.	Void - Combined with 178.1
156.1	7	Unitarian Church of Sarasota, Inc.	12,310 <sup>sq</sup>	0	2,420 Ac.	O.R. 1842, Pg. 418
157.1	7, 8	John J. Nevin, as Bishop of the Diocese of Venice	0.801 Ac.	0	3,722 <sup>sq</sup>	O.R. 1842, Pg. 418
158.1	8, 9	Delores R. Stottlemeyer	0.794 Ac.	0	3,423 <sup>sq</sup>	O.R. 1842, Pg. 418
159.1	8	Thomas F. Brennan	2,600 <sup>sq</sup>	0	0.822 Ac.	Void - Combined with 178.1
160.1	8	Ronald S. Kauffman, et ux	5,257 <sup>sq</sup>	0	1,281 Ac.	Void - Combined with 178.1
161.1	8	Almar Developers, Inc.	1,591 <sup>sq</sup>	0	15,298 <sup>sq</sup>	Void - Combined with 178.1
162.1	8	Almar Developers, Inc.	1,681 <sup>sq</sup>	0	11,484 <sup>sq</sup>	Void - Combined with 178.1
163.1	8	Bohio Vista Mennonite Church, Inc.	12,509 <sup>sq</sup>	0	0	O.R. 1850, Pg. 2188
164.1	8	Andrew A. Garcia, et ux	1,423 <sup>sq</sup>	0	0.821 Ac.	Δ Lot 307 <sup>sq</sup> O.R. 1847, Pg. 2343
165.1	8, 9	Charles Joseph Sanderlin	656 <sup>sq</sup>	0	0.746 Ac.	Triangle = 269 <sup>sq</sup> O.R. 1855, Pg. 767
166.1	9	Herbert H. Sicks, et ux	380 <sup>sq</sup>	0	2,140 Ac.	O.R. 1841, Pg. 1535
167.1	9, 12	Margaret P. Chapman	12,053 <sup>sq</sup>	0	6.036 Ac.	Along Fruitville-811 <sup>sq</sup> O.R. 1870, Pg. 2035
168.1	9	Richard A. Kingsley	3,688 S.F.	0	8,178 S.F.	REMAINDER TO CITY OF SARASOTA BY O.R. 2395, PAGE 2433 WHOLE TAKE O.R. 1825, Pg. 126
169.1	9, 12	Mabel Thompson	0.560 Ac.	0	11,911 Ac.	O.R. 1909, Pg. 782
170.1	9, 12	Chander P. Malik, et ux	422 <sup>sq</sup>	0	16,996 <sup>sq</sup>	O.R. 1831, Pg. 2929
171.1	12	Morvin Gardens & Landscape, Inc.	2,485 <sup>sq</sup>	0	6,753 Ac.	O.R. 1769, Pg. 162
172.1	7	City of Sarasota	2,869 <sup>sq</sup>	0	N/A	O.R. 1769, Pg. 162
173.1	10	Susie P. Levinson	0.648 Ac.	0	15,105 <sup>sq</sup>	O.R. 1763, Pg. 213

PARCEL NO.	SHEET NO.	NAME	AREA TAKEN	REMAINDERS RIGHT	REMAINDERS LEFT	COMMENTS
174.1	10	Michael A. Altman, et al	1,167 <sup>sq</sup>	0	3,857 Ac.	O.R. 1842, Pg. 409
175.1	9, 12	Northern Trust Bank of Florida, Sarasota N.A., et al	1,471 <sup>sq</sup>	0	3,206 Ac.	O.R. 1842, Pg. 409
176.1	13	Seawind Properties, Inc.	1,284 <sup>sq</sup>	0	0.544 Ac.	VOID (Not needed)
177.1	5	Linda A. Muniz & Carl W. Pflug	2,391 <sup>sq</sup>	0	0.574 Ac.	O.R. 1842, Pg. 409
178.1	2, 3, 4, 5, 6, 7, 8, 10, 13	Sarasota County	1,679 Ac.	N/A	N/A	O.R. 1842, Pg. 409
179.1	2	Ralph S. Wilhelm, et ux	4,310 <sup>sq</sup>	0	10,776 <sup>sq</sup>	O.R. 1867, Pg. 1968
180.1	5, 13	Granada Street Asso.	0.704 Ac.	0	3,024 Ac.	O.R. 1941, Pg. 711
181.1	7	Roy Starrok, et ux	3,438 <sup>sq</sup>	0	0.610 Ac.	O.R. 1896, Pg. 2476
182.1	7	C.B. Frazier, et ux	2,600 <sup>sq</sup>	0	0	O.R. 1909, Pg. 877
183.1	8	Therra T. Brown	2,600 <sup>sq</sup>	0	0	O.R. 1909, Pg. 875
184.1	8	Ronald S. Kauffman, et ux	80 <sup>sq</sup>	0	0	O.R. 1909, Pg. 779
185.1	8	John S. Guevara, et ux	80 <sup>sq</sup>	0	11,556 <sup>sq</sup>	O.R. 1901, Pg. 1818
186.1	8	Almar Developers, Inc.	102 <sup>sq</sup>	0	11,467 <sup>sq</sup>	O.R. 1901, Pg. 1818
187.1	7	John J. Nevin, as Bishop of the Diocese of Venice	5,516 <sup>sq</sup>	0	1,059 Ac.	O.R. 1920, Pg. 1251
188.1	13	Roy Starrok, et ux	1,905 <sup>sq</sup>	0	18,812 <sup>sq</sup>	VOID (Not needed)
189.1	3	Thomas J. Elbare, et ux	526 <sup>sq</sup>	0	0	Total Take Rem. P. 108 Relinquished per O.R. # 200041889. O.R. 2084, Pg. 2812 Taking includes remaining area of P. 157.1 and P. 185.1
190.1	3, 4, 10	North Bay Investment Corporation	920 <sup>sq</sup>	0	0	VOID (Not needed)
191.1	13	Tenth Way Corporation	0.620 Ac.	0	0	VOID (Not needed)
500	5	TENTH WAY CORPORATION	2,913	N/A	N/A	R/W DONATION O.R. # 200421792 4 PGS.

PARCEL NO.	SHEET NO.	NAME	AREA TAKEN	REMAINDERS RIGHT	REMAINDERS LEFT	COMMENTS
178.1 a	2	Sarasota County	359 <sup>sq</sup>	0	0	
b	3, 4		2533 <sup>sq</sup>	0	0	
c	5, 13		12,090 <sup>sq</sup>	0	0	
d	13		15,577 <sup>sq</sup>	0	0	
e	6		1,778 <sup>sq</sup>	0	0	
f	7		2,543 <sup>sq</sup>	0	0	
g	8		0.27 Ac.	0	0	
h	8		80 <sup>sq</sup>	0	0	
i	8		102 <sup>sq</sup>	0	0	
j	7		458 <sup>sq</sup>	0	0	
k	10		5044 <sup>sq</sup>	0	0	
l	9, 12		1928 <sup>sq</sup>	0	0	
			1679 Ac.	0	0	
823.1 a	3, 10	Sarasota County	2287 <sup>sq</sup>	0	0	
b	7		3358 <sup>sq</sup>	0	0	
c	7		267 <sup>sq</sup>	0	0	
d	8		20 <sup>sq</sup>	0	0	
		Total Area	5932 <sup>sq</sup>	0	0	
827.1	8	John J. Nevin as Bishop of the Diocese of Venice	300sf	See Par. 157.1	0	As 180 <sup>sq</sup> B 120 <sup>sq</sup> Perpetual Easement O.R. 2179, Pg. 344
828.1	9	Pauline H. Sicks	4 sf	2.140 Ac.	0	O.R. 2210 <sup>sq</sup> Pg. 1025

**DRAINAGE EASEMENTS**

800.1	3, 4, 10	The Willard Mortgage Corp	4,190 <sup>sq</sup>	1,244 Ac.	VOID - Combined w/ 801.1
801.1	3, 4, 10	Warskip Enterprises	5,520 <sup>sq</sup>	0.674 Ac.	
802.1	10	Susie P. Levinson	5,687 <sup>sq</sup>	SEE PARCEL 173.1	
803.1	5	Almar Developers, Inc.	580 <sup>sq</sup>	SEE PARCEL 185.1	O.R. 1837, Pg. 535
804.1	5	Sarasota County	1,438 <sup>sq</sup>	SEE PARCEL 130.1	O.R. 1763, Pg. 210
805.1		Not Used			
806.1	10	County of Sarasota	600 <sup>sq</sup>	N/A	N/A
807.1		Not Used			
808.1	7	City of Sarasota	5,448 <sup>sq</sup>	SEE PARCEL 172.1	O.R. 1769, Pg. 156
809.1	7	Unitarian Church of Sarasota, Inc.	192 <sup>sq</sup>	SEE PARCEL 157.1	See Par. 157.1 VOID (Not needed)
810.1	7	John J. Nevin, as Bishop of the Diocese of Venice	520 <sup>sq</sup>	SEE PARCEL 157.1	O.R. 1842, Pg. 416
811.1	6, 7	Midwest Arms Assoc., Limited	798 <sup>sq</sup>	SEE PARCEL 157.1	See Par. 149.1
812.1	7				



SEE INSERT SHEET NO 2 SEE INSERT SHEET NO 3 SEE INSERT SHEET NO 4 SEE INSERT SHEET NO 5 SEE INSERT SHEET NO 6 SEE INSERT SHEET NO 7 SEE INSERT SHEET NO 8 SEE INSERT SHEET NO 9

T365-RIDE

CITY OF SARASOTA

BEGIN R/W JOB Sta. 68+00.00

END R/W JOB STA 179+00.00

BEARING EQUATION  
S89°43'38"E & SURVEY  
N89°36'25"E & 17040-2508

- UTILITY OWNERS**
- Power Poles & Lines..... FL Power Light Co.
  - Telephone Cables, Bell Lines... Gen Telephone
  - Sanitary Sewer System..... City of Sarasota
  - Water Mains..... City of Sarasota
  - Gas Mains..... Snythem Gas Co.
  - Cable T.V..... Star Cable T-V
- (Note: Replaces Scan Inc.)

**KEY MAP**  
FRUITVILLE ROAD  
EAST OF TUTTLE AVE. TO McINTOSH ROAD

FLORIDA DEPARTMENT OF TRANSPORTATION			
RIGHT OF WAY ENGINEERING SECTION			
RIGHT OF WAY MAP			
STATE ROAD NO. 780		SARASOTA COUNTY	
BY	DATE	APPROVED BY	DATE
JA	8-3-81	<i>[Signature]</i>	
TRACED	JA	8-4-81	
CHECKED	CWA	9-18-81	
FIRST DISTRICT		FIELD BOOK NOS. 022275, 022345, 0227306	
W.P.I. NO. 119038		SCALE 1" = 400'	
SECTION 17040-2516		SHEET 1	

Property Lines Established From Record Title  
This Survey was made Prior to Sept 1, 1981







