

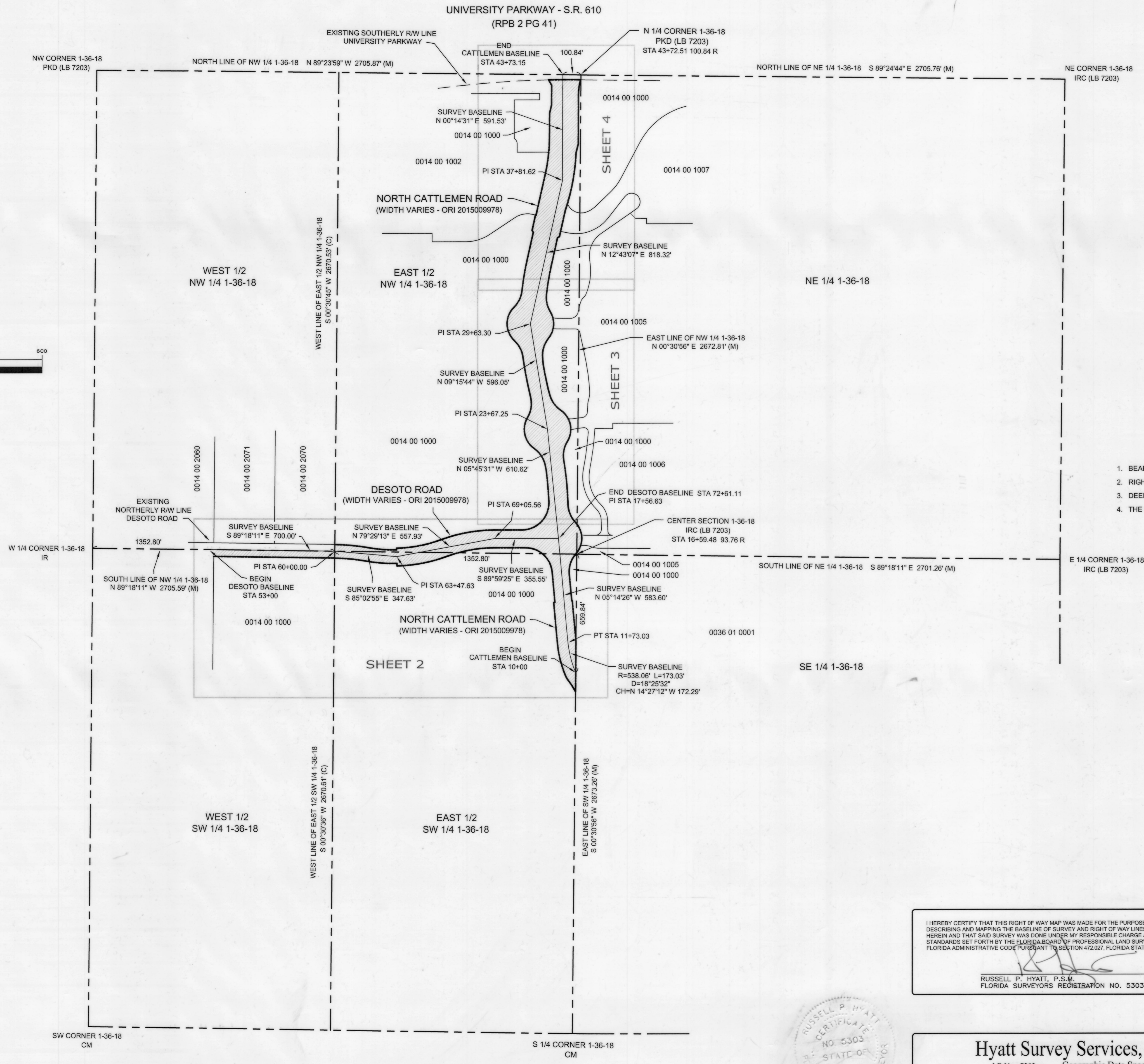
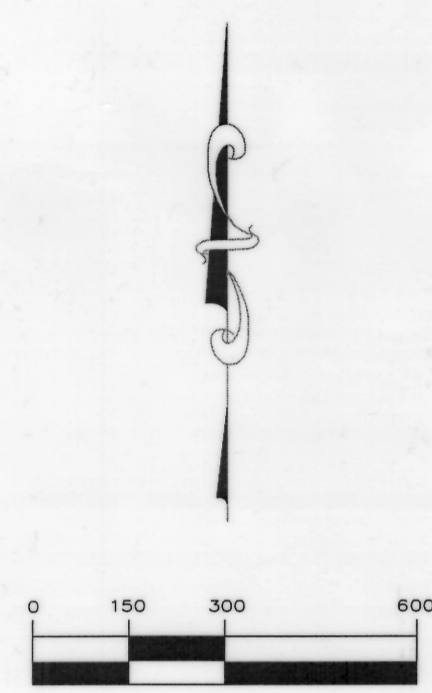
LOCATION MAP
NO SCALE

GENERAL NOTES

1. BEARINGS ARE BASED ON A PROJECTION OF THE STATE PLANE COORDINATE SYSTEM OF FLORIDA WEST ZONE (NAD 83/07 ADJUSTMENT).
2. RIGHT-OF-WAY LINES ARE BASED ON DOCUMENTS RECORDED IN ORI 2015009978 OF THE PUBLIC RECORDS OF SARASOTA COUNTY, FLORIDA.
3. DEED AND FIELD MEASURED DISTANCES ARE THE SAME UNLESS INDICATED OTHERWISE HEREIN.
4. THE SURVEY BASELINE AND RIGHTS-OF-WAY HAVE BEEN MONUMENTED AS OF DECEMBER 19, 2013.

LEGEND

o	IRON ROD W/ CAP SET (LB 7203)	IRC	IRON ROD W/ CAP
⊙	PK NAIL W/ DISC SET (LB 7203)	PKD	PK NAIL W/ DISC
R	RADIUS	CM	CONCRETE MONUMENT
L	ARC LENGTH	0014 00 1000	COUNTY PARCEL ID (TYP)
D	DELTA	PI	POINT OF INTERSECTION
CH	CHORD	PT	POINT OF TANGENT
R/W	RIGHT-OF-WAY	PC	POINT OF CURVATURE
STA	STATION	PRC	POINT OF REVERSE CURVATURE
(M)	MEASURED	RPB	ROAD PLAT BOOK
(C)	CALCULATED	PG	PAGE
(D)	DEED	R	RIGHT
		L	LEFT
		ORI	OFFICIAL RECORDS INSTRUMENT



I HEREBY CERTIFY THAT THIS RIGHT OF WAY MAP WAS MADE FOR THE PURPOSE OF SURVEYING, REFERENCING, DESCRIBING AND MAPPING THE BASELINE OF SURVEY AND RIGHT OF WAY LINES AS SHOWN AND DEPICTED HEREIN AND THAT SAID SURVEY WAS DONE UNDER MY RESPONSIBLE CHARGE AND MEETS THE MINIMUM STANDARDS SET FORTH BY THE FLORIDA BOARD OF PROFESSIONAL LAND SURVEYORS IN CHAPTER 5J-17, FLORIDA ADMINISTRATIVE CODE PURSUANT TO SECTION 472.027, FLORIDA STATUTES.

Russell P. Hyatt
 RUSSELL P. HYATT, P.S.M.
 FLORIDA SURVEYORS' REGISTRATION NO. 5303

Teri S. Owen
 TERI S. OWEN, COUNTY SURVEYOR
 SURVEY-MAPPING

Lin Kurant
 COUNTY ENGINEER

Lin Kurant
 LIN KURANT, MANAGER
 REAL PROPERTY



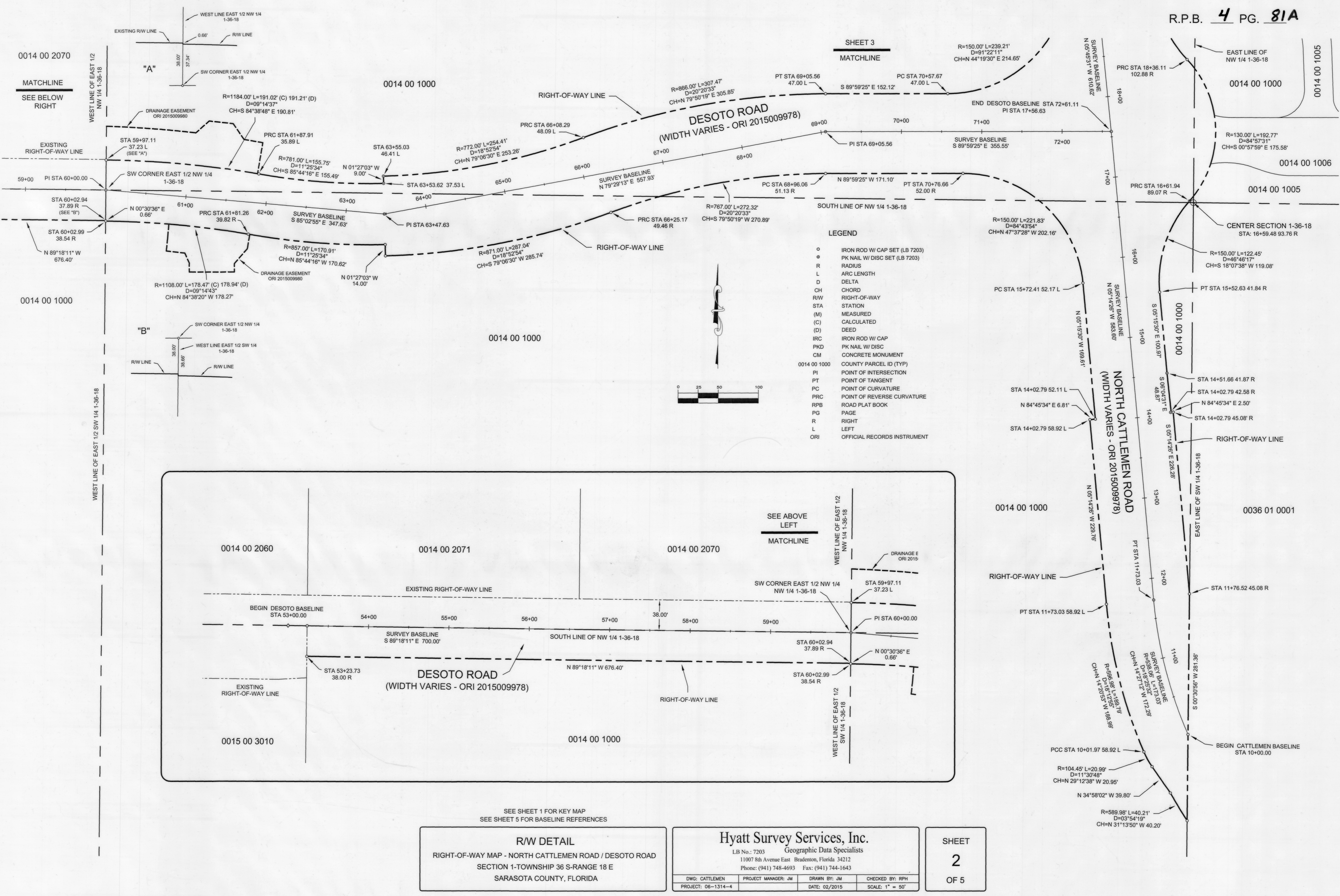
SEE SHEETS 2 - 4 FOR RIGHT-OF-WAY DETAIL
 SEE SHEET 5 FOR BASELINE REFERENCES

Hyatt Survey Services, Inc.
 LB No.: 7203 Geographic Data Specialists
 11007 8th Avenue East Bradenton, Florida 34212
 Phone: (941) 748-4693 Fax: (941) 744-1643

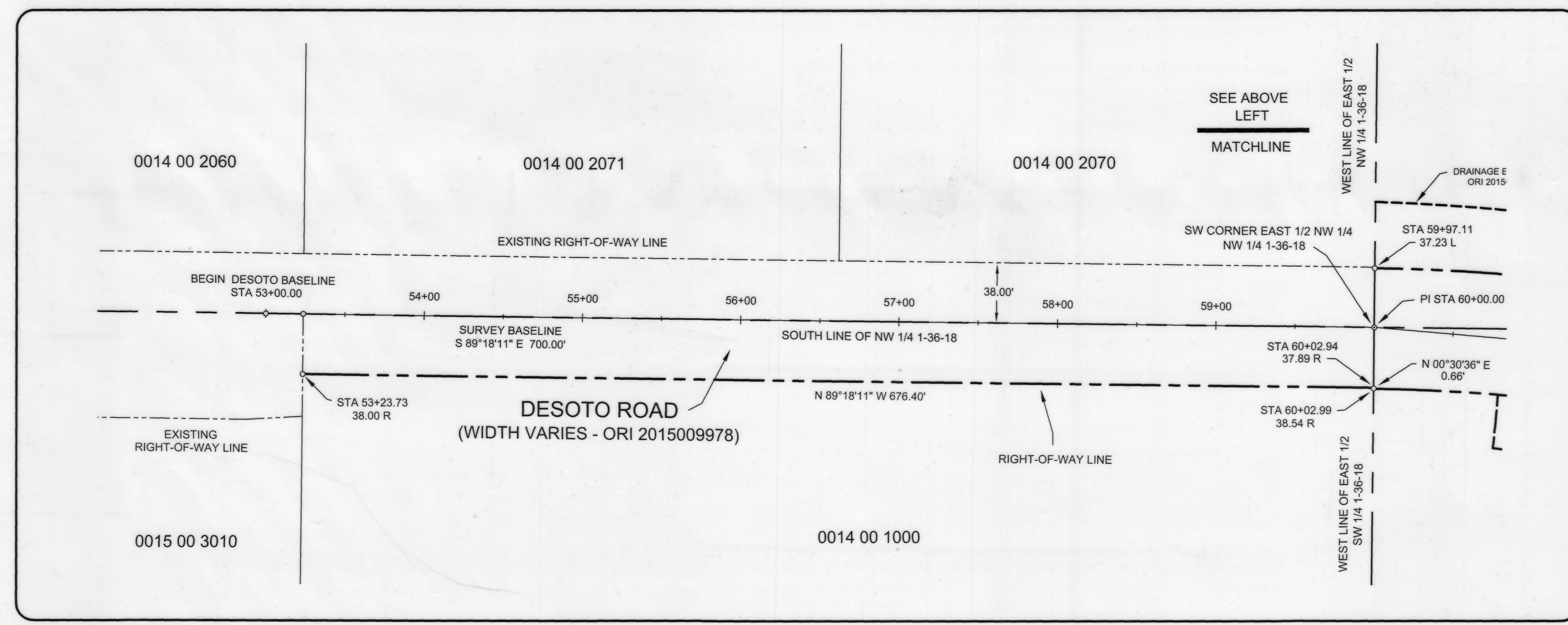
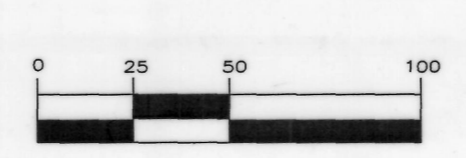
DWG: CATTLEMEN	PROJECT MANAGER: JM	DRAWN BY: JM	CHECKED BY: RPH
PROJECT: 06-1314-4	DATE: 02/2015	SCALE: 1" = 300'	

KEY MAP
 RIGHT-OF-WAY MAP - NORTH CATTLEMEN ROAD / DESOTO ROAD
 SECTION 1-TOWNSHIP 36 S-RANGE 18 E
 SARASOTA COUNTY, FLORIDA

SHEET
1
 OF 5



- LEGEND**
- o IRON ROD W/ CAP SET (LB 7203)
 - ⊙ PK NAIL W/ DISC SET (LB 7203)
 - R RADIUS
 - L ARC LENGTH
 - D DELTA
 - CH CHORD
 - R/W RIGHT-OF-WAY
 - STA STATION
 - (M) MEASURED
 - (C) CALCULATED
 - (D) DEED
 - IRC IRON ROD W/ CAP
 - PKD PK NAIL W/ DISC
 - CM CONCRETE MONUMENT
 - 0014 00 1000 COUNTY PARCEL ID (TYP)
 - PI POINT OF INTERSECTION
 - PT POINT OF TANGENT
 - PC POINT OF CURVATURE
 - PRC POINT OF REVERSE CURVATURE
 - RPB ROAD PLAT BOOK
 - PG PAGE
 - R RIGHT
 - L LEFT
 - ORI OFFICIAL RECORDS INSTRUMENT



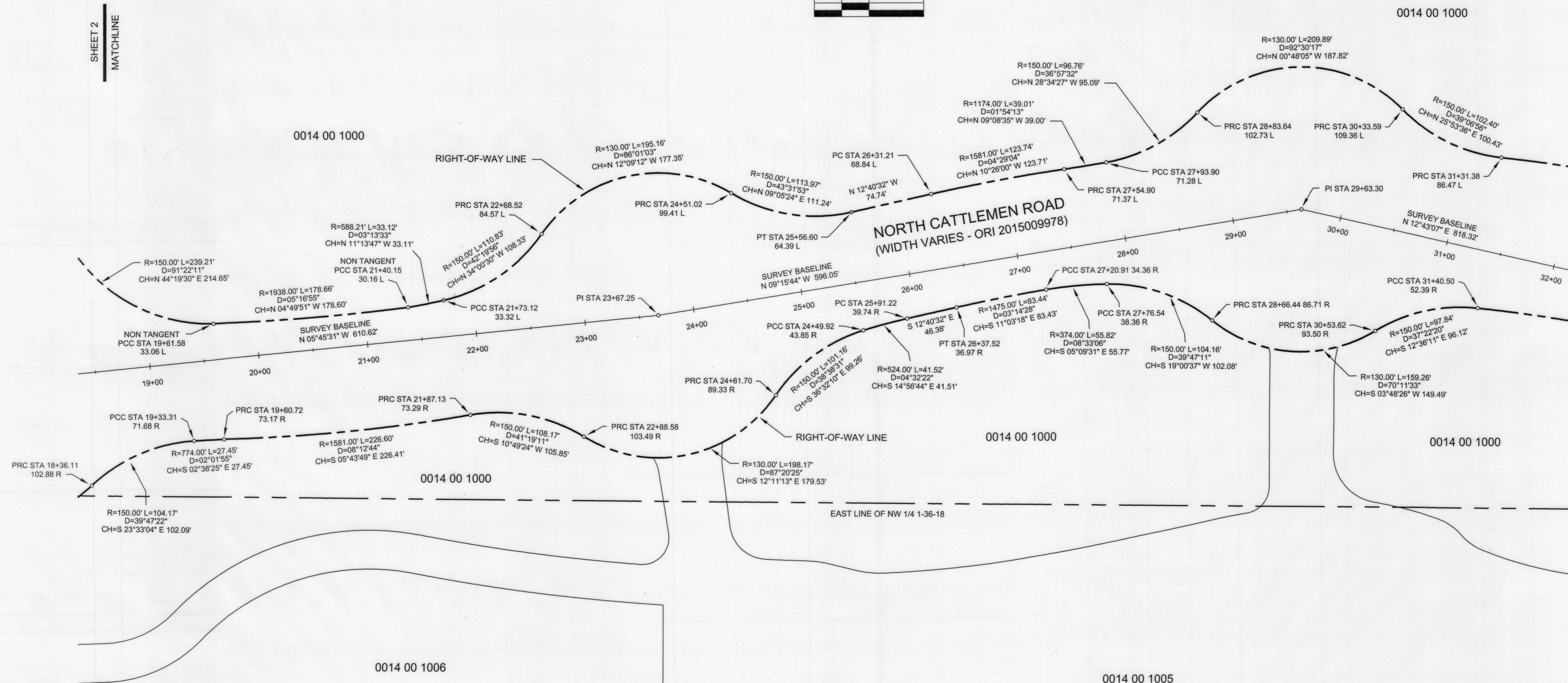
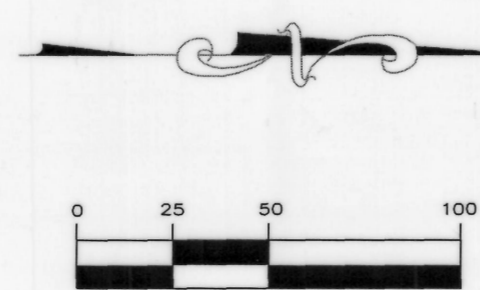
SEE SHEET 1 FOR KEY MAP
SEE SHEET 5 FOR BASELINE REFERENCES

R/W DETAIL
RIGHT-OF-WAY MAP - NORTH CATTLEMEN ROAD / DESOTO ROAD
SECTION 1-TOWNSHIP 36 S-RANGE 18 E
SARASOTA COUNTY, FLORIDA

Hyatt Survey Services, Inc.
Geographic Data Specialists
LB No.: 7203
11007 8th Avenue East Bradenton, Florida 34212
Phone: (941) 748-4693 Fax: (941) 744-1643

DWG: CATTLEMEN	PROJECT MANAGER: JM	DRAWN BY: JM	CHECKED BY: RPH
PROJECT: 06-1314-4	DATE: 02/2015	SCALE: 1" = 50'	

SHEET
2
OF 5



LEGEND

- o IRON ROD W/ CAP SET (LB 7203)
- ⊙ PK NAIL W/ DISC SET (LB 7203)
- R RADIUS
- L ARC LENGTH
- D DELTA
- CH CHORD
- R/W RIGHT-OF-WAY
- STA STATION
- (M) MEASURED
- (C) CALCULATED
- (D) DEED
- IRC IRON ROD W/ CAP
- PKD PK NAIL W/ DISC
- CM CONCRETE MONUMENT
- 0014 00 1000 COUNTY PARCEL ID (TYP)
- PI POINT OF INTERSECTION
- PT POINT OF TANGENT
- PC POINT OF CURVATURE
- PRC POINT OF REVERSE CURVATURE
- RPB ROAD PLAT BOOK
- PG PAGE
- R RIGHT
- L LEFT
- ORI OFFICIAL RECORDS INSTRUMENT

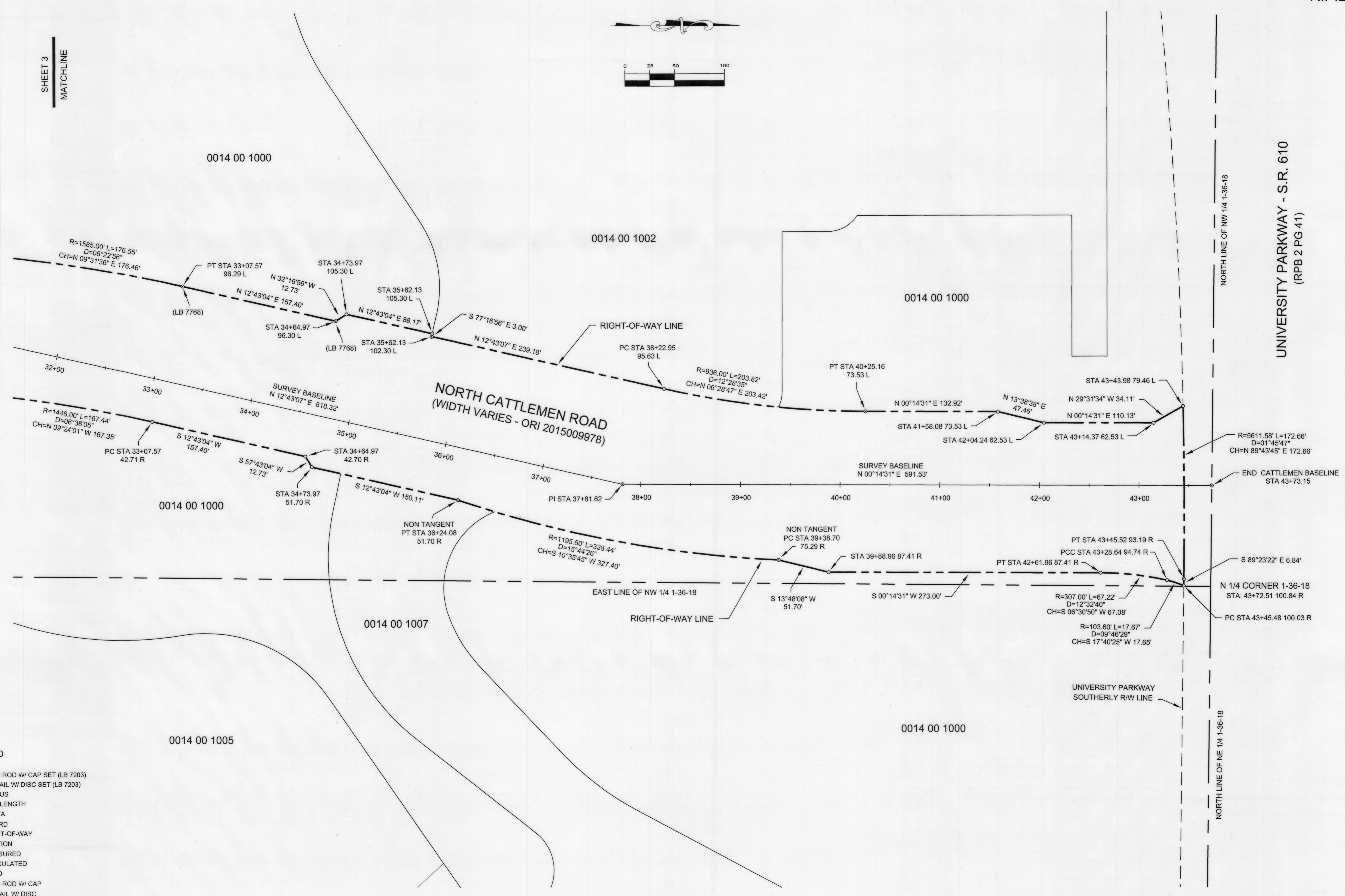
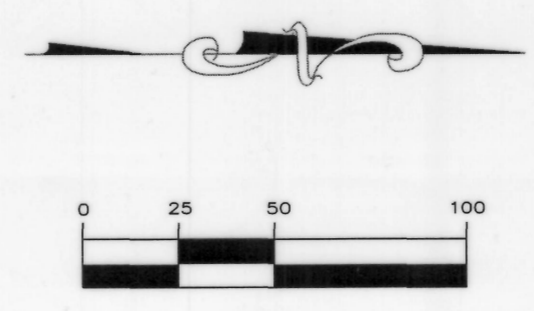
SEE SHEET 1 FOR KEY MAP
SEE SHEET 5 FOR BASELINE REFERENCES

R/W DETAIL
RIGHT-OF-WAY MAP - NORTH CATTLEMEN ROAD / DESOTO ROAD
SECTION 1-TOWNSHIP 36 S-RANGE 18 E
SARASOTA COUNTY, FLORIDA

Hyatt Survey Services, Inc.			
Geographic Data Specialists 11007 8th Avenue East Bradenton, Florida 34212 Phone: (941) 748-4693 Fax: (941) 744-1643			
DWG: CATTLEMEN	PROJECT MANAGER: JM	DRAWN BY: JM	CHECKED BY: RPH
PROJECT: 06-1314-4	DATE: 02/2015	SCALE: 1" = 50'	

SHEET
3
OF 5

SHEET 3
MATCHLINE



UNIVERSITY PARKWAY - S.R. 610
(RPB 2 PG 41)

- LEGEND**
- o IRON ROD W/ CAP SET (LB 7203)
 - ⊙ PK NAIL W/ DISC SET (LB 7203)
 - R RADIUS
 - L ARC LENGTH
 - Δ DELTA
 - CH CHORD
 - R/W RIGHT-OF-WAY
 - STA STATION
 - (M) MEASURED
 - (C) CALCULATED
 - (D) DEED
 - IRC IRON ROD W/ CAP
 - PKD PK NAIL W/ DISC
 - CM CONCRETE MONUMENT
 - 0014 00 1000 COUNTY PARCEL ID (TYP)
 - PI POINT OF INTERSECTION
 - PT POINT OF TANGENT
 - PC POINT OF CURVATURE
 - PRC POINT OF REVERSE CURVATURE
 - RPB ROAD PLAT BOOK
 - PG PAGE
 - R RIGHT
 - L LEFT
 - ORI OFFICIAL RECORDS INSTRUMENT

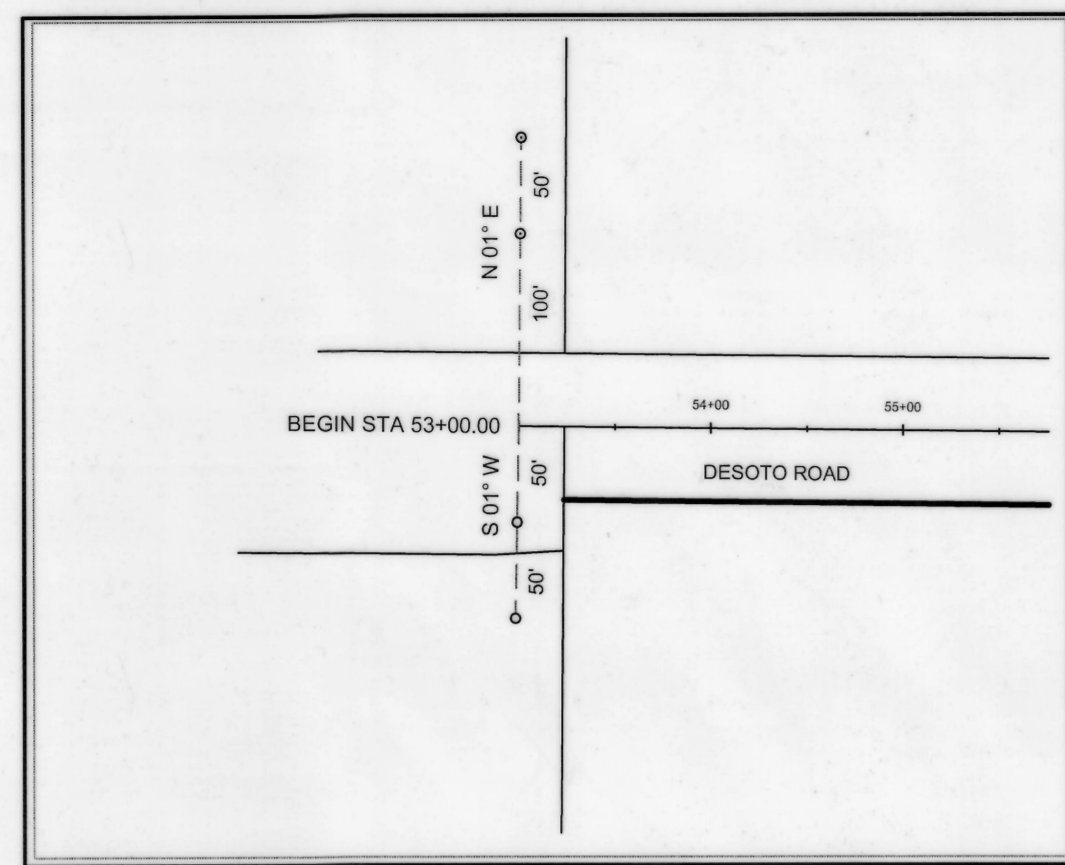
SEE SHEET 1 FOR KEY MAP
SEE SHEET 5 FOR BASELINE REFERENCES

R/W DETAIL
RIGHT-OF-WAY MAP - NORTH CATTLEMEN ROAD / DESOTO ROAD
SECTION 1-TOWNSHIP 36 S-RANGE 18 E
SARASOTA COUNTY, FLORIDA

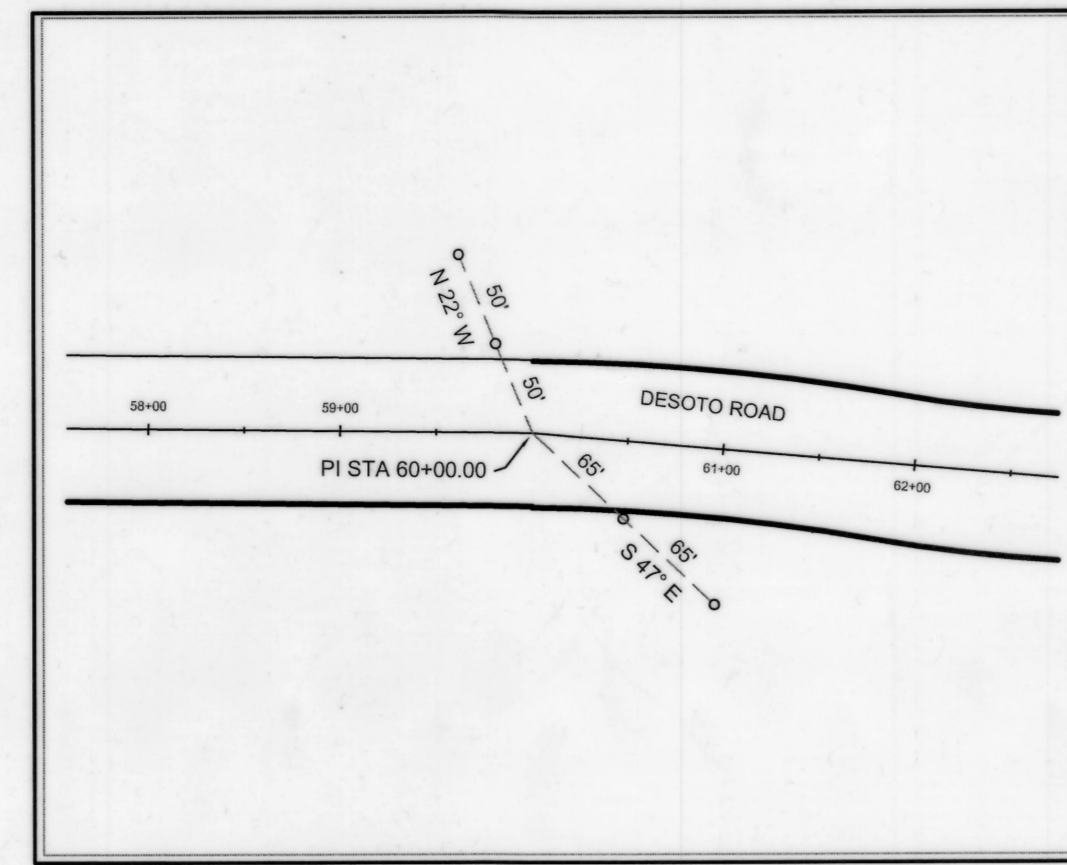
Hyatt Survey Services, Inc.
Geographic Data Specialists
11007 8th Avenue East Bradenton, Florida 34212
Phone: (941) 748-4693 Fax: (941) 744-1643

DWC: CATTLEMEN	PROJECT MANAGER: JM	DRAWN BY: JM	CHECKED BY: RPH
PROJECT: 06-1314-4	DATE: 02/2015	SCALE: 1" = 50'	

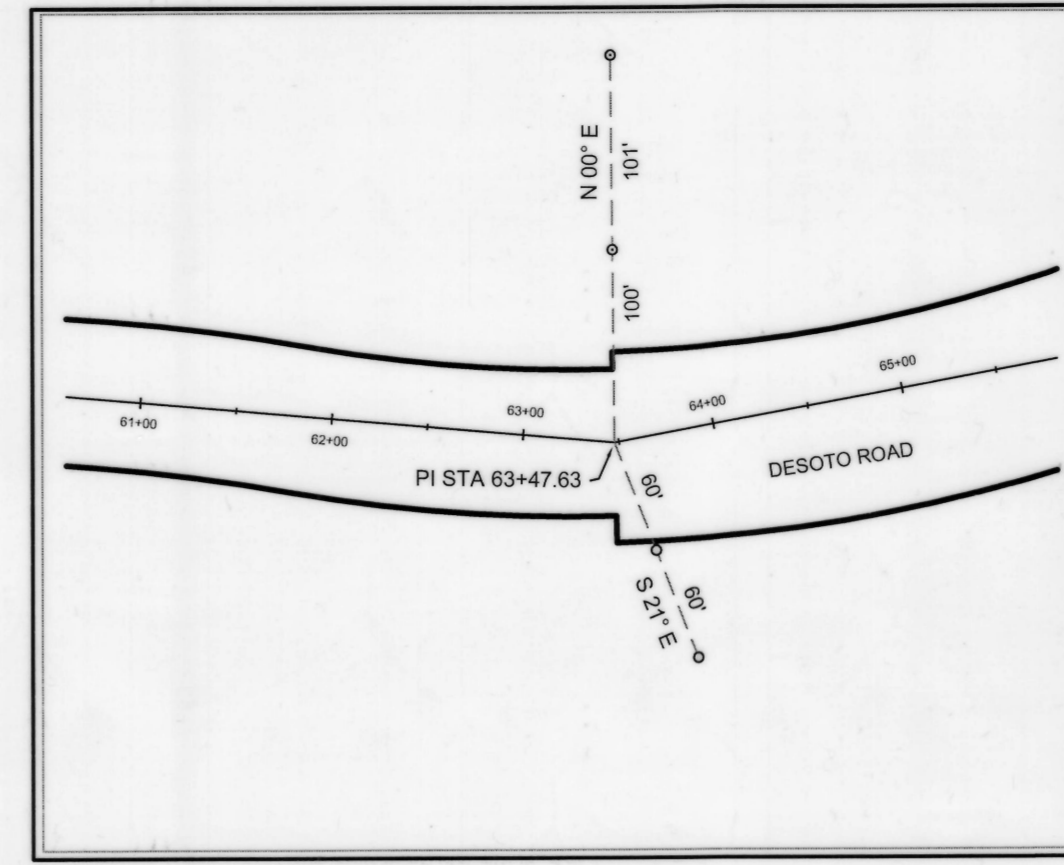
SHEET
4
OF 5



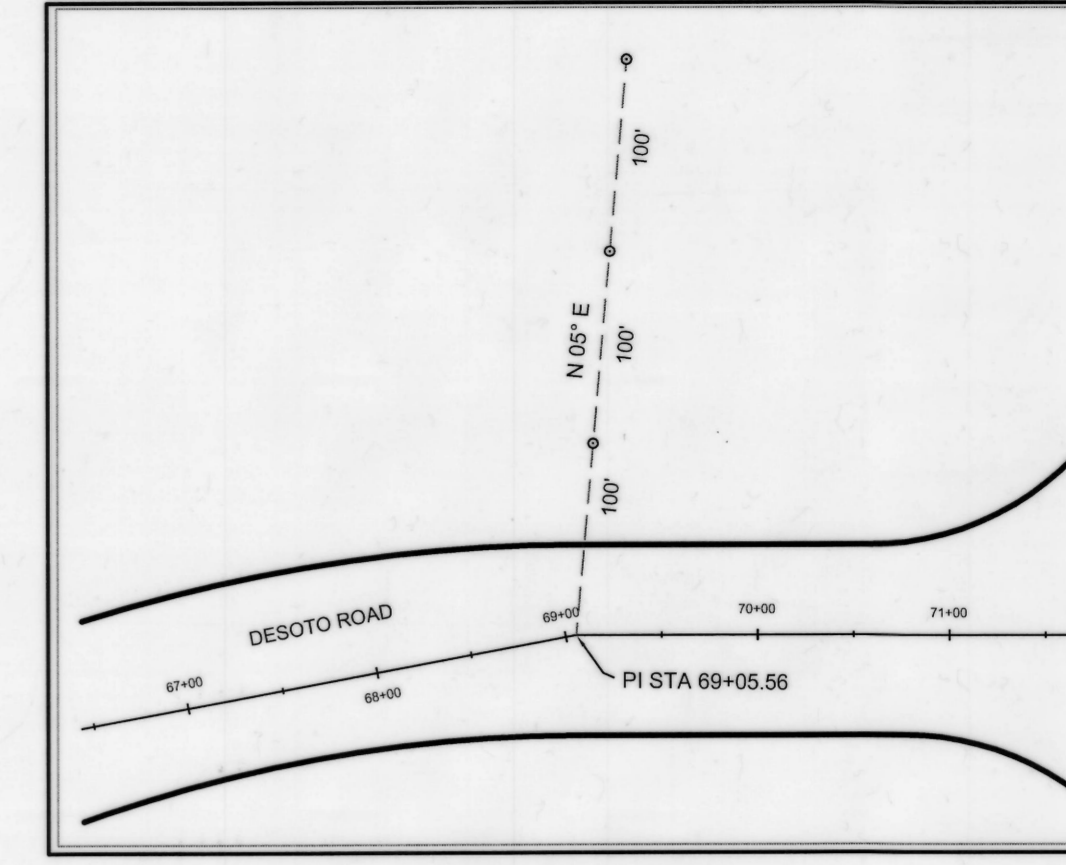
BEGIN STATION 53+00



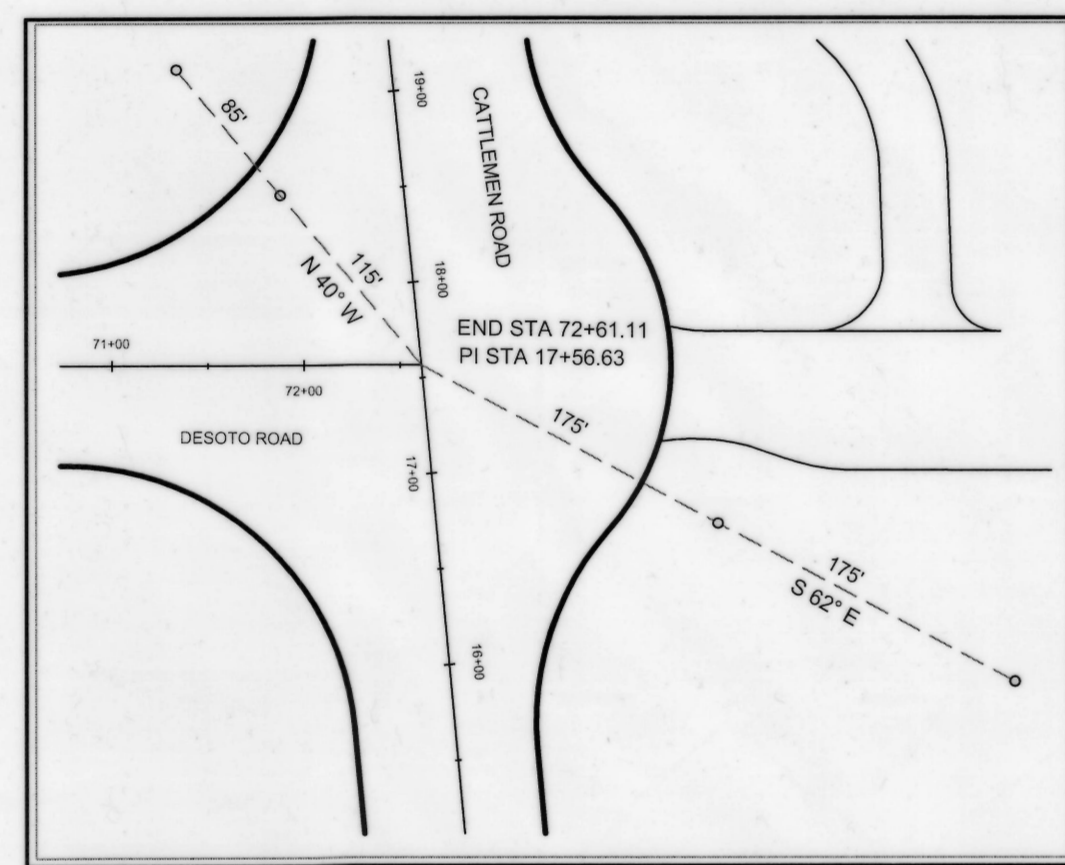
PI STATION 60+00



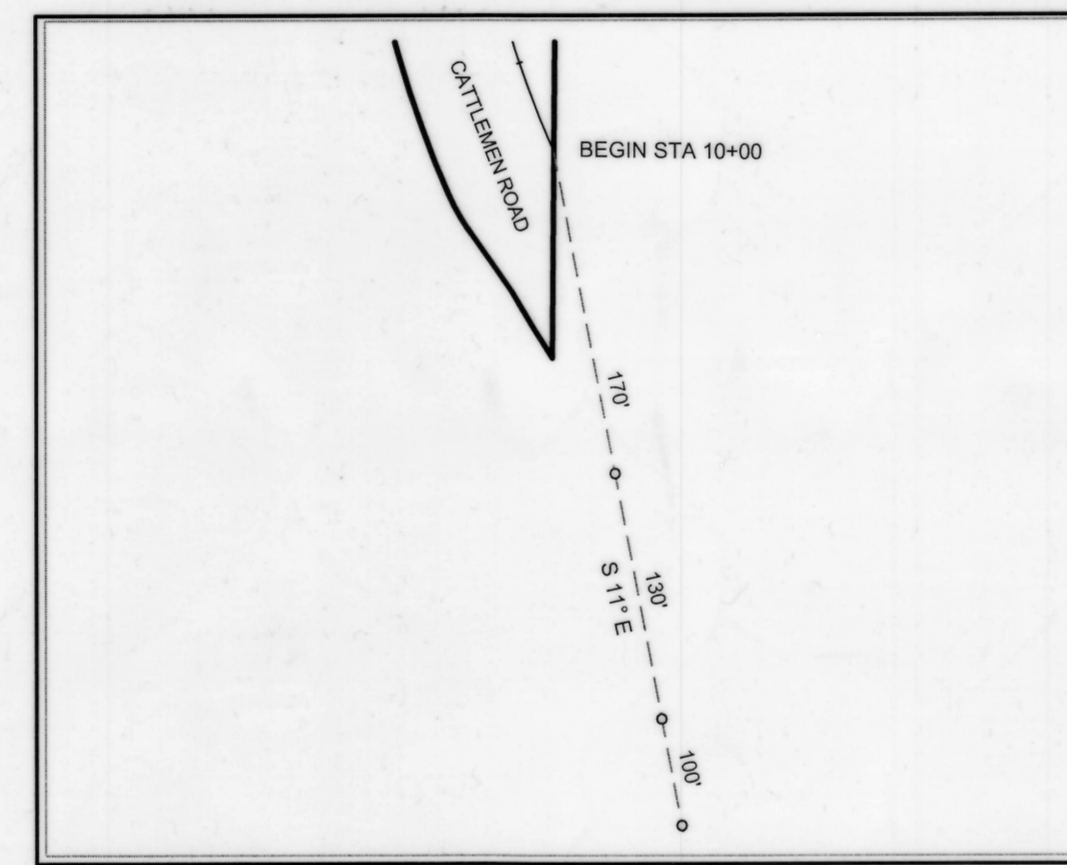
PI STATION 63+47.63



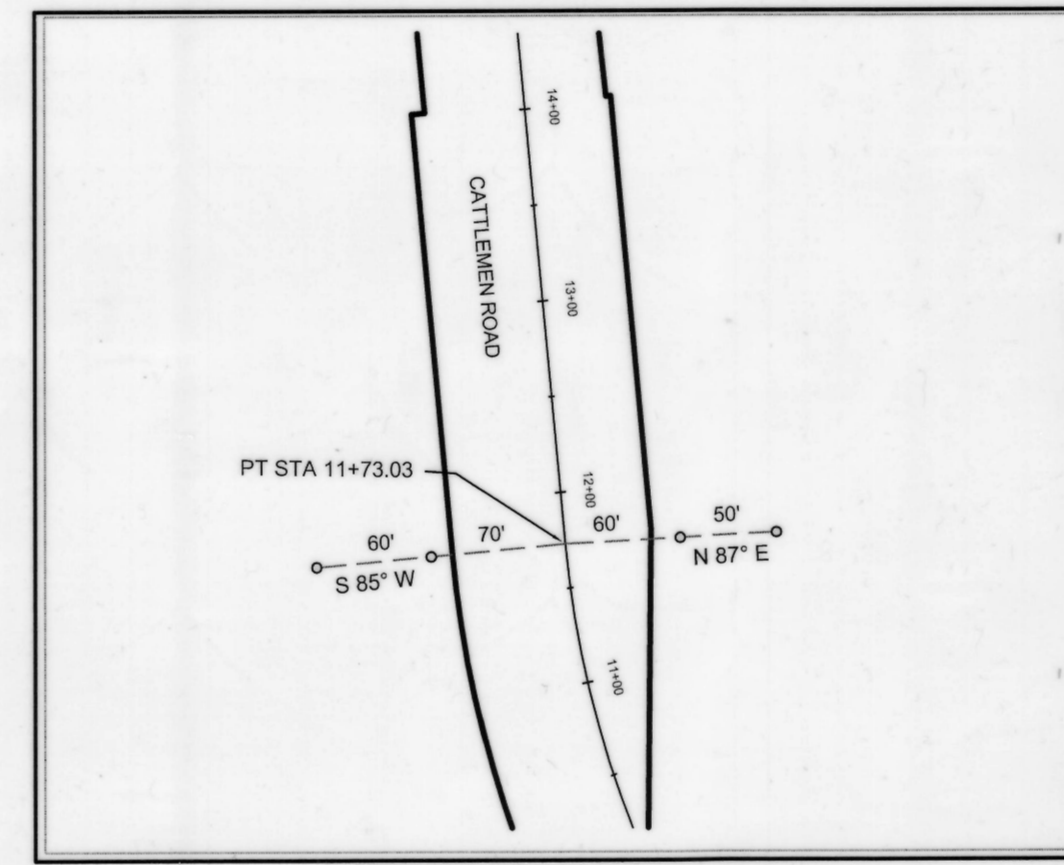
PI STATION 69+05.56



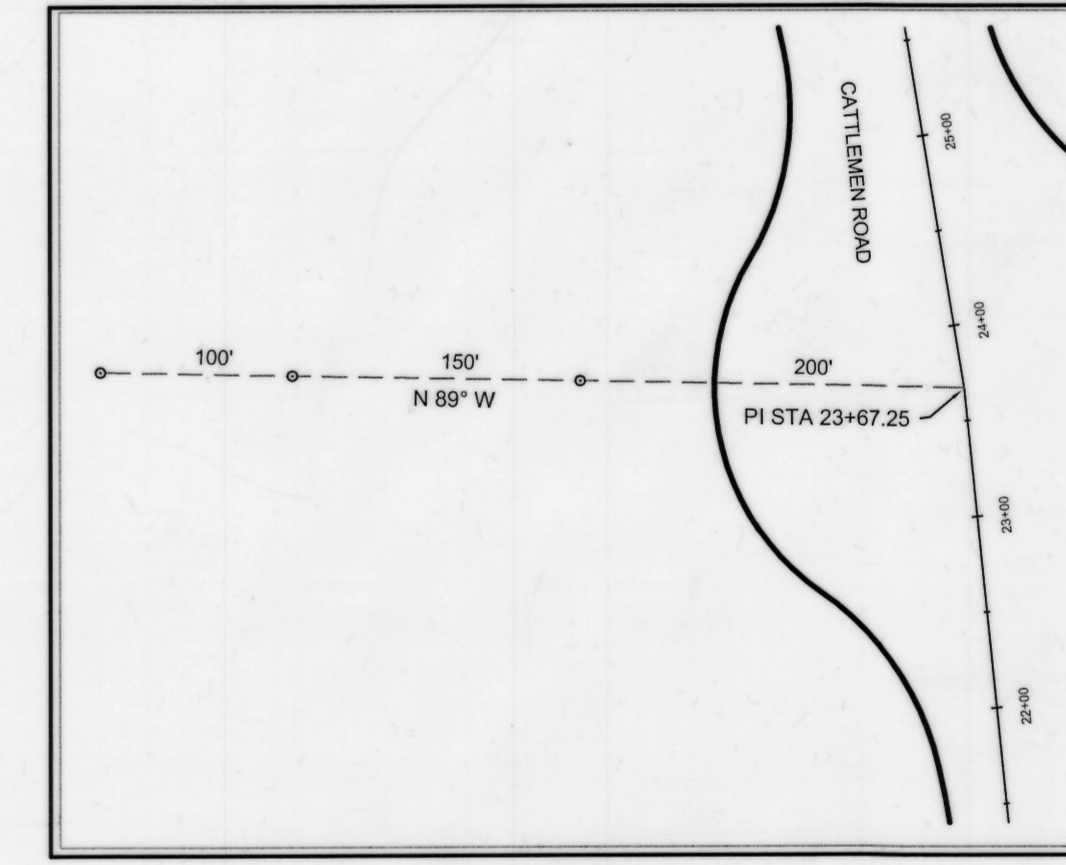
END STATION 72+61.11
PI STATION 17+56.63



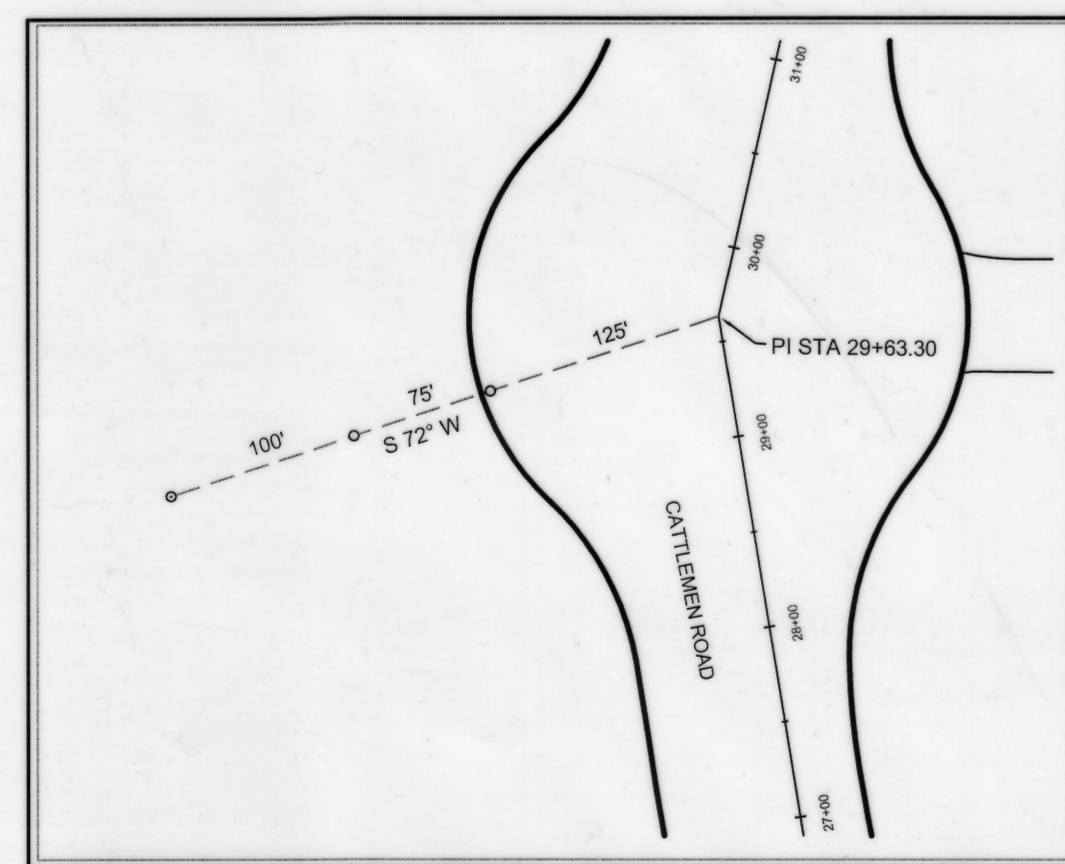
BEGIN STATION 10+00



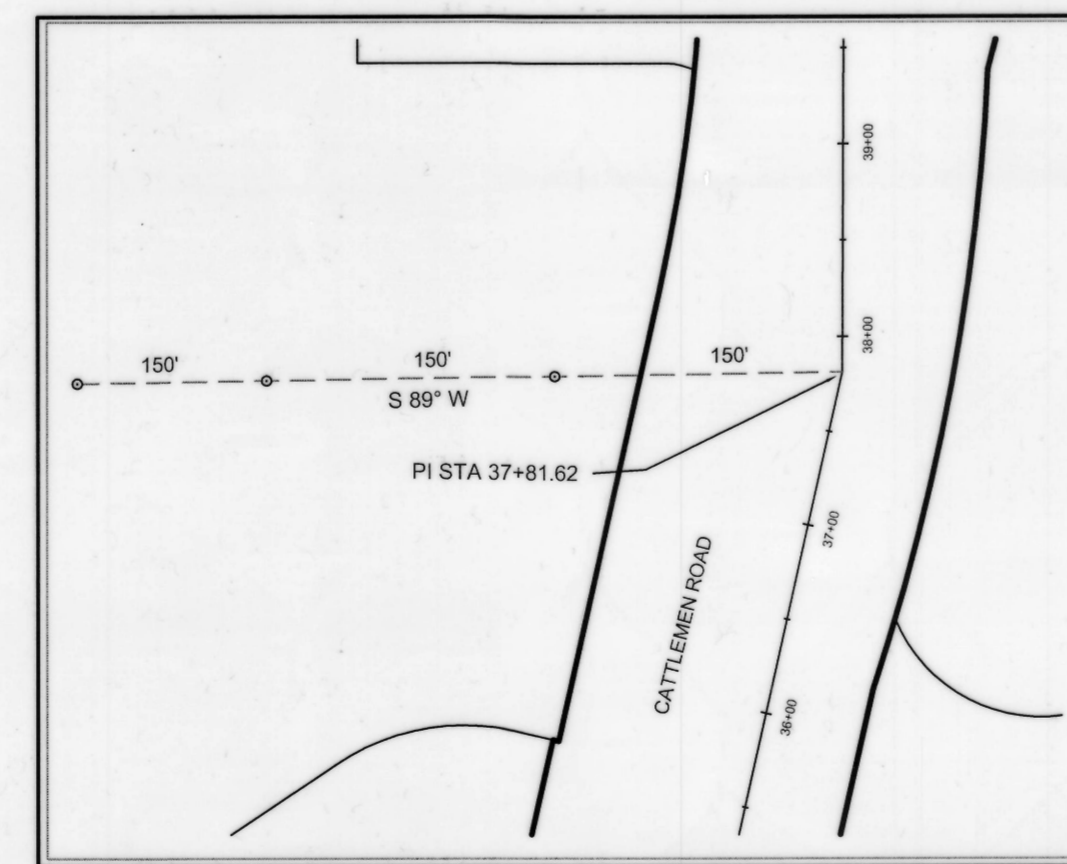
PT STATION 11+73.03



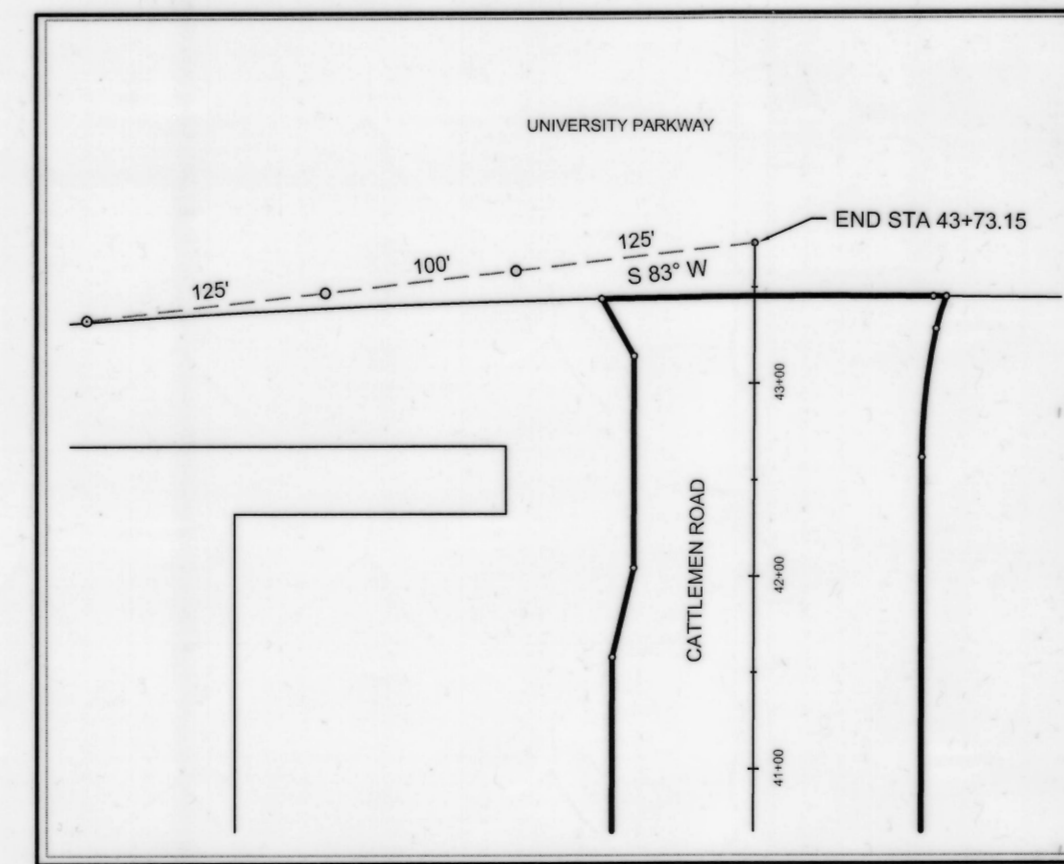
PI STATION 23+67.25



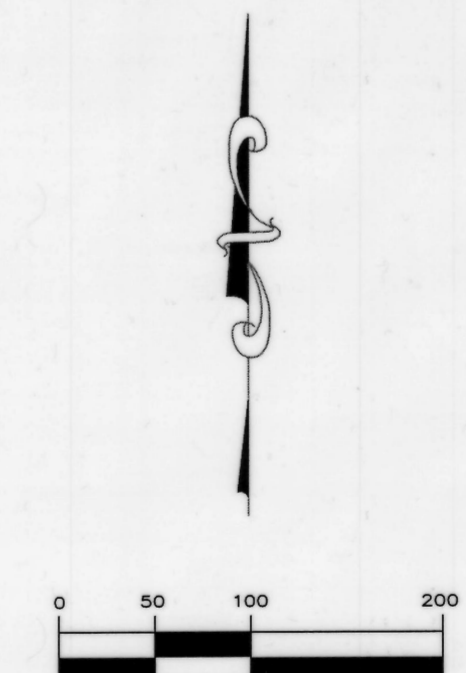
PI STATION 29+63.30



PI STATION 37+81.62



END STATION 43+73.15



LEGEND

- IRON ROD W/ CAP SET (LB 7203)
- ⊙ PK NAIL W/ DISC SET (LB 7203)
- R RADIUS
- L ARC LENGTH
- Δ DELTA
- CH CHORD
- R/W RIGHT-OF-WAY
- STA STATION
- (M) MEASURED
- (C) CALCULATED
- (D) DEED
- IRC IRON ROD W/ CAP
- PKD PK NAIL W/ DISC
- CM CONCRETE MONUMENT
- 0014 00 1000 COUNTY PARCEL ID (TYP)
- PI POINT OF INTERSECTION
- PT POINT OF TANGENT
- PC POINT OF CURVATURE
- PRC POINT OF REVERSE CURVATURE
- RPB ROAD PLAT BOOK
- PG PAGE
- R RIGHT
- L LEFT
- ORI OFFICIAL RECORDS INSTRUMENT

SEE SHEET 1 FOR KEY MAP
SEE SHEETS 2 - 4 FOR RIGHT-OF-WAY DETAIL

BASELINE REFERENCES
RIGHT-OF-WAY MAP - NORTH CATTLEMEN ROAD / DESOTO ROAD
SECTION 1-TOWNSHIP 36 S-RANGE 18 E
SARASOTA COUNTY, FLORIDA

Hyatt Survey Services, Inc.
Geographic Data Specialists
LB No.: 7203
11007 8th Avenue East Bradenton, Florida 34212
Phone: (941) 748-4693 Fax: (941) 744-1643

DWG: CATTLEMEN	PROJECT MANAGER: JM	DRAWN BY: JM	CHECKED BY: RPH
PROJECT: 06-1314-4		DATE: 02/2015	SCALE: 1" = 100'

SHEET
5
OF 5