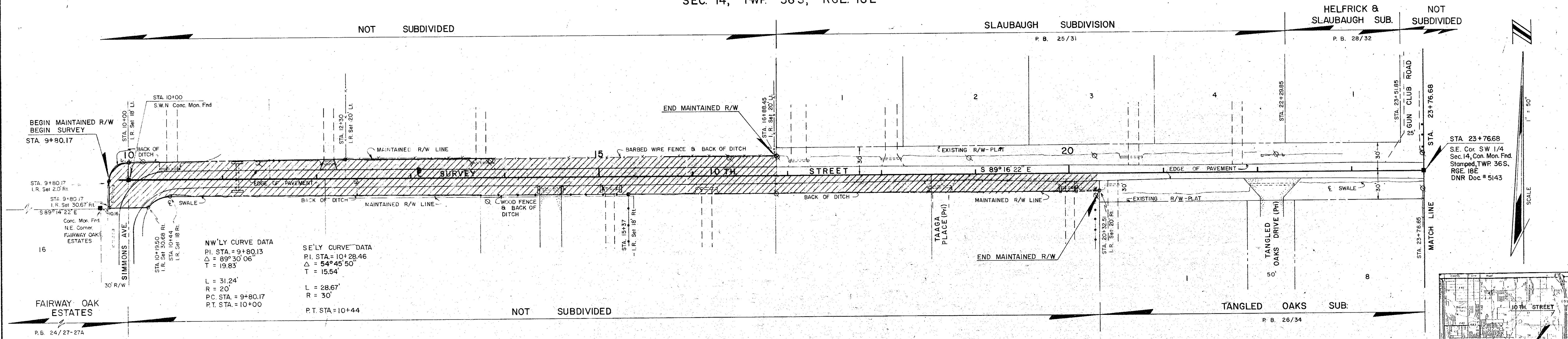


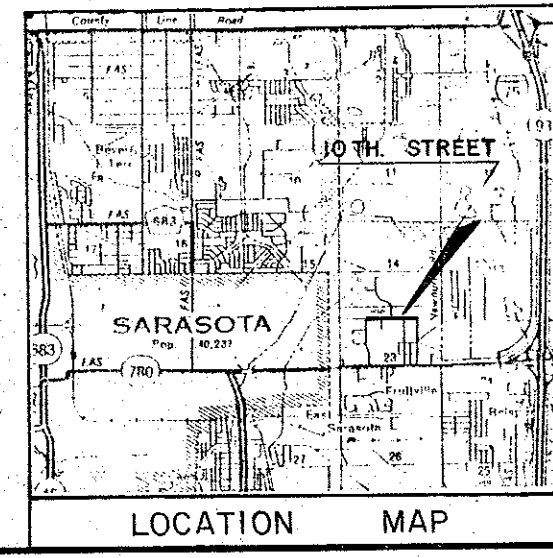
SEC. 14, TWP. 36S, RGE. 18E



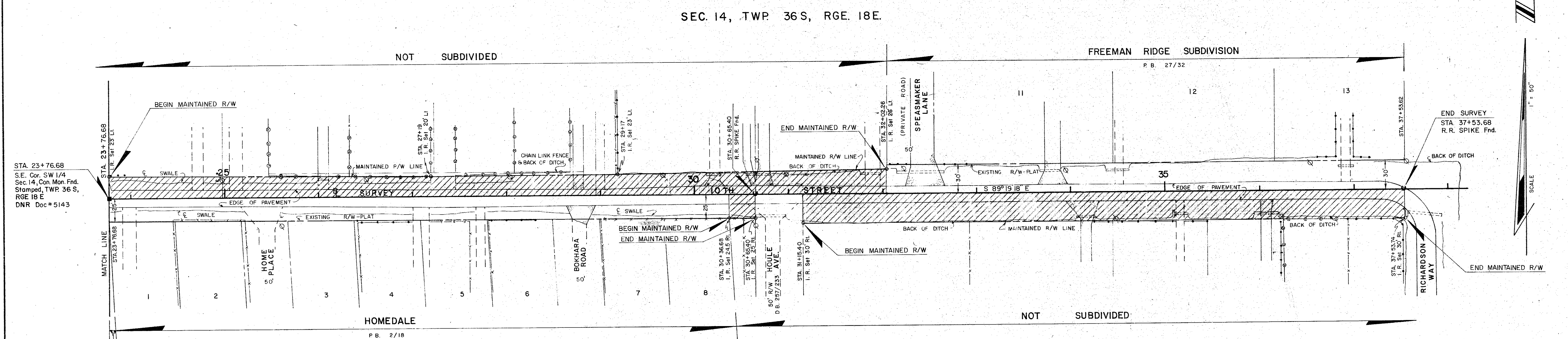
NW'LY CURVE DATA
 P.I. STA. = 9+80.13
 $\Delta = 89^\circ 30' 06''$
 $T = 19.83$
 $L = 31.24'$
 $R = 20'$
 P.C. STA. = 9+80.17
 P.T. STA. = 10+00

SE'LY CURVE DATA
 P.I. STA. = 10+28.46
 $\Delta = 54^\circ 45' 50''$
 $T = 15.54$
 $L = 28.67'$
 $R = 30'$
 P.T. STA. = 10+44

STA. 23+76.68
 S.E. Cor. SW 1/4
 Sec. 14, Con. Mon. Fnd.
 Stamped, TWP. 36S,
 RGE. 18E
 DNR Doc. # 5143



SEC. 23, TWP. 36S, RGE. 18E.



STA. 23+76.68
 S.E. Cor. SW 1/4
 Sec. 14, Con. Mon. Fnd.
 Stamped, TWP. 36S,
 RGE. 18E
 DNR Doc. # 5143

- LEGEND**
- I.R. Set With Red Cap Stamped
 - County R/W PLS 1867
 - Conc. Mon. Fnd.
 - R.R. Spike Fnd.
 - ⊗ Telephone & Power Pole
 - ⊗ Guy Wire

THIS IS TO CERTIFY THAT THE NUMBERED SHEET ONE (1) OF ONE (1) CONSTITUTE THE OFFICIAL MAINTENANCE MAP SHOWING THE LOCATION AND SURVEY BY THE SARASOTA COUNTY, FLORIDA, TRANSPORTATION DEPARTMENT FOR 10TH STREET LYING BETWEEN SIMMONS AVE. AND RICHARDSON WAY IN SECTIONS 14 AND 23, TOWNSHIP 36S, RANGE 18E, SARASOTA COUNTY, FLORIDA, THE PROPERTY SHOWN CROSS-HATCHED ON THIS MAP HAS BEEN VESTED IN SARASOTA COUNTY, FLORIDA, PURSUANT TO THE PROVISIONS OF CHAPTER 95.361, FLORIDA STATUTES OF 1983.

ACCEPTED FOR FILES AND RECORDED IN THE PUBLIC RECORDS OF SARASOTA COUNTY, FLORIDA THIS 5TH DAY OF FEB. A.D. 1986, IN ROAD PLAT BOOK 3 PAGE 5.

Susan E. Thompson
 CLERK OF THE CIRCUIT COURT
 SARASOTA COUNTY, FLORIDA

THIS IS TO CERTIFY THAT THIS MAINTENANCE MAP WAS APPROVED BY RESOLUTION NO. 86-44 PASSED AND ADOPTED BY THE BOARD OF COUNTY COMMISSIONERS OF SARASOTA COUNTY, FLORIDA, ON THE 4TH DAY OF FEBRUARY, A.D., 1986.

BOARD OF COUNTY COMMISSIONERS OF SARASOTA COUNTY, FLORIDA BY:
Jim Greenwald
 CHAIRMAN

ATTEST:
 R.H. HAGNEY JR. CLERK OF THE CIRCUIT COURT AND EX-OFFICIO CLERK OF THE BOARD OF COUNTY COMMISSIONERS OF SARASOTA COUNTY, FLORIDA BY:

Susan E. Thompson
 DEPUTY CLERK

THIS IS TO CERTIFY THAT THE LIMITS OF THE ROADWAY OUTSIDE OF PLATTED RIGHT-OF-WAY AS SHOWN CROSS-HATCHED HEREON, HAS BEEN MAINTAINED CONTINUOUSLY FOR OVER FOUR (4) YEARS WITHOUT INTERRUPTION.

Paul Hoytjke
 SUPERINTENDENT
 ROAD & BRIDGE DIVISION

SURVEYOR'S NOTES
 BEARINGS ARE BASED ON SLAUBAUGH SUBDIVISION, PLAT BOOK 25 PG. 31, THE SOUTH LINE, THEREOF, BEING S 89°16'22\"/>

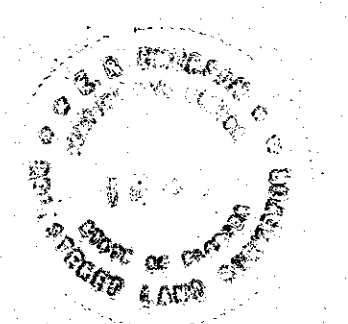
SURVEYOR'S CERTIFICATE

I HEREBY CERTIFY THAT THIS MAINTAINED R/W MAP REPRESENTS A BOUNDARY SURVEY OF THE ROAD AS SHOWN, THAT THE SURVEY WAS RECENTLY PERFORMED UNDER MY DIRECTION, AND THAT IT IS TRUE AND CORRECT TO THE BEST OF MY KNOWLEDGE AND BELIEF, AND THAT IT MEETS THE MINIMUM TECHNICAL STANDARDS FOR LAND SURVEYING IN THE STATE OF FLORIDA (CH. 21 HH-6, F.A.C.) EFFECTIVE SEPT 1, 1981.

DATE OF SURVEY: 1-31-86

E.R. Emerson
 E. R. EMERSON, COUNTY SURVEYOR
 PROFESSIONAL LAND SURVEYOR NO. 1867
 STATE OF FLORIDA
 1301 CATTLEMAN ROAD
 SARASOTA, FLORIDA 33582

2-3-86
 DATE



SARASOTA COUNTY TRANSPORTATION DEPARTMENT ENGINEERING DIVISION, CADASTRAL SECTION	
MAINTAINED RIGHT OF WAY MAP	
10TH STREET SIMMONS AVE. TO RICHARDSON WAY	
BY	DATE
FWF	1-28-86
CHECKED	DATE
DEB	1-29-86
COMPARED	DATE
J.P.	1-30-86
REF. F.B. 297, Pg. 41-50	TRANSPORTATION DIRECTOR
SCALE 1" = 50'	PROJECT NO. 85106 SHEET 1 OF 1