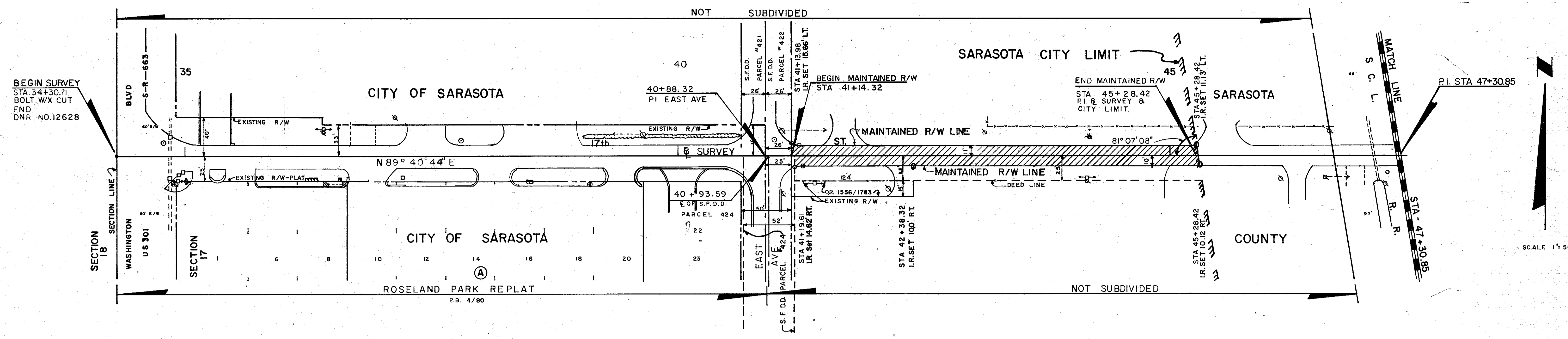
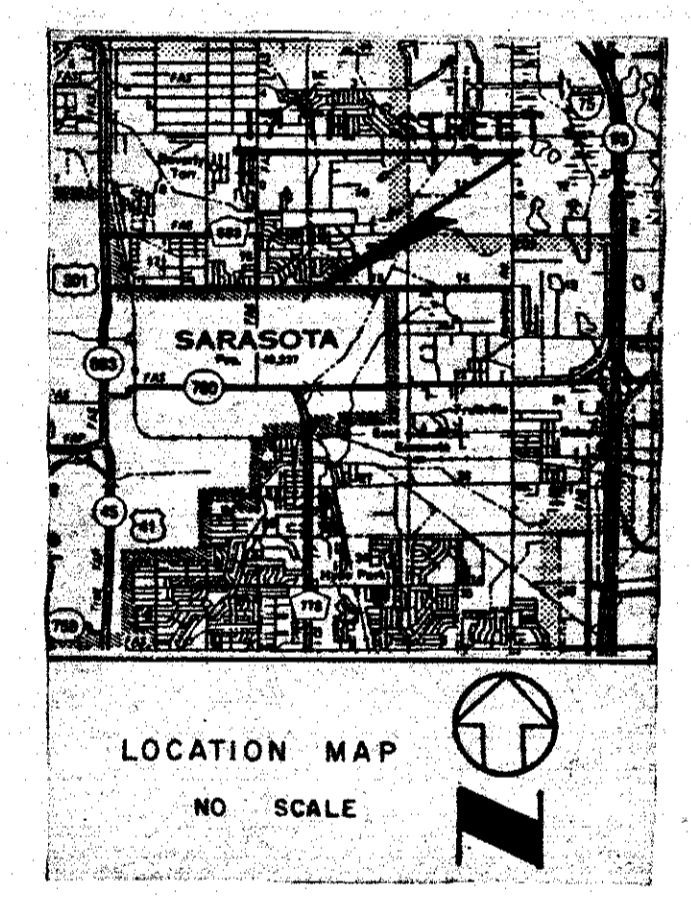
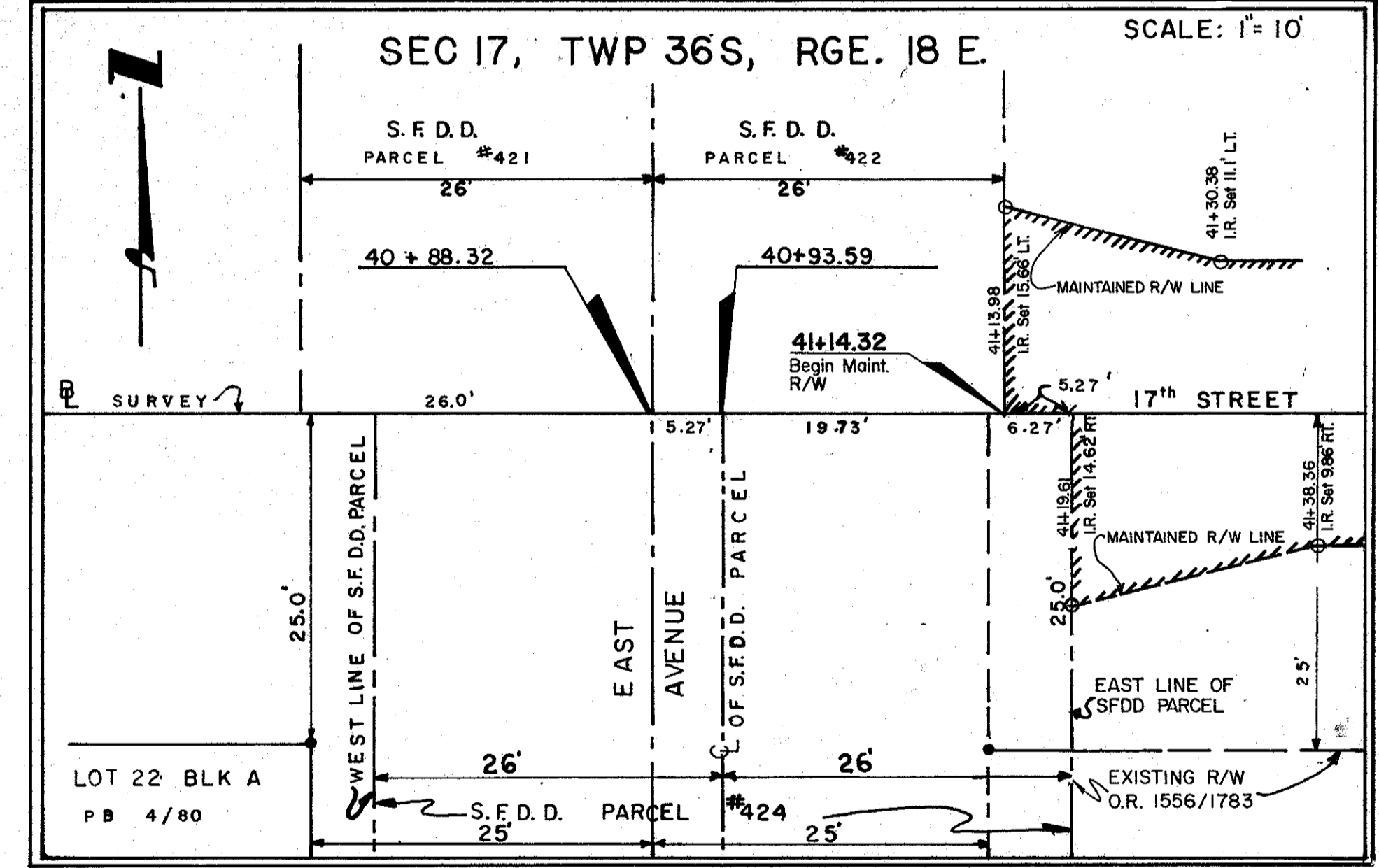


SEC. 17, TWP 36S, RGE. 18 E.



DETAIL 17TH STREET & EAST AVENUE



SURVEYOR'S NOTE

BEARINGS ARE BASED ON THE MEADOWS UNIT 1, PLAT BOOK 25, PAGES 36-36E, THE SOUTH LINE, THEREOF, BEING N89°04'14"W.

UTILITIES OWNERS

TELEPHONE LINES, CABLES AND POLES OWNED BY GENERAL TELEPHONE COMPANY.

POWER POLES AND LINES OWNED BY FLORIDA POWER AND LIGHT.

SURVEYOR'S CERTIFICATE

I HEREBY CERTIFY THAT THIS MAINTAINED R/W MAP REPRESENTS A BOUNDARY SURVEY OF THE ROAD AS SHOWN, THAT THE SURVEY WAS RECENTLY PERFORMED UNDER MY DIRECTION, AND THAT IT IS TRUE AND CORRECT TO THE BEST OF MY KNOWLEDGE AND BELIEF, AND THAT IT MEETS THE MINIMUM TECHNICAL STANDARDS FOR LAND SURVEYING IN THE STATE OF FLORIDA (CHAPTER 21 HH-6, F.A.C.) EFFECTIVE SEPT 1981.

DATE OF SURVEY: 4-11-86

E.R. Emerson 4-11-86
 E.R. EMERSON, COUNTY SURVEYOR
 PROFESSIONAL LAND SURVEYOR NO. 1867
 STATE OF FLORIDA
 1301 CATTLEMEN ROAD
 SARASOTA, FLORIDA 33582

THIS IS TO CERTIFY THAT THE NUMBERED SHEET ONE (1) OF ONE (1) CONSTITUTES THE OFFICIAL MAINTENANCE MAP SHOWING THE LOCATION AND SURVEY BY THE SARASOTA COUNTY, FLORIDA, TRANSPORTATION DEPARTMENT FOR 17TH STREET LYING BETWEEN EAST AVENUE AND THE EAST CITY LIMITS IN SECTION 17, TOWNSHIP 36 S., RANGE 18 E. SARASOTA COUNTY, FLORIDA. THE PROPERTY SHOWN CROSS-HATCHED ON THIS MAP HAS BEEN VESTED IN THE CITY OF SARASOTA, FLORIDA, PURSUANT TO THE PROVISIONS OF CHAPTER 95.361, FLORIDA STATUTES OF 1963.

ACCEPTED FOR FILES AND RECORDED IN THE PUBLIC RECORDS OF SARASOTA COUNTY, FLORIDA, THIS 20 DAY OF JUNE A.D. 1986, IN ROAD PLAT BOOK 3 PAGE 8

R.H. Hawkey Jr.
 CLERK OF THE CIRCUIT COURT
 SARASOTA COUNTY, FLORIDA

THIS IS TO CERTIFY THAT THIS MAINTENANCE MAP WAS APPROVED AND ADOPTED BY THE CITY COMMISSION OF THE CITY OF SARASOTA, FLORIDA, ON THE 2nd DAY OF JUNE A.D. 1986.

Robert A. McLeelland
 MAYOR

ATTEST:
 ROBERT A. McLEELLAND CITY AUDITOR AND CLERK OF THE CITY OF SARASOTA, FLORIDA BY
Robert A. McLeelland

THIS IS TO CERTIFY THAT THE LIMITS OF THE ROADWAY OUTSIDE OF THE PLATTED OR RECORDED RIGHT-OF-WAY AS SHOWN CROSS-HATCHED HEREON, HAS BEEN MAINTAINED CONTINUOUSLY FOR OVER FOUR (4) YEARS WITHOUT INTERRUPTION.

R.B. Winster
 DIRECTOR OF PUBLIC WORKS

MAINTAINED RIGHT OF WAY MAP		SCALE: 1" = 50'	REVISIONS	
17 TH STREET		DATE: 2/28/86	REV	6-18-87 SURVEYOR'S NOTES
EAST AVENUE TO EAST CITY LIMIT		DESIGNED BY:		
CITY OF SARASOTA ENGINEERING DIVISION FLORIDA		DRAWN BY: J.M.M.		
FILE DRAWER: SHEET:		CHECKED BY:		
REVISION:	SHT: 1 OF 1	SURVEYED BY:	BOOK NO:	CO. 294

PAGE O.R.B.