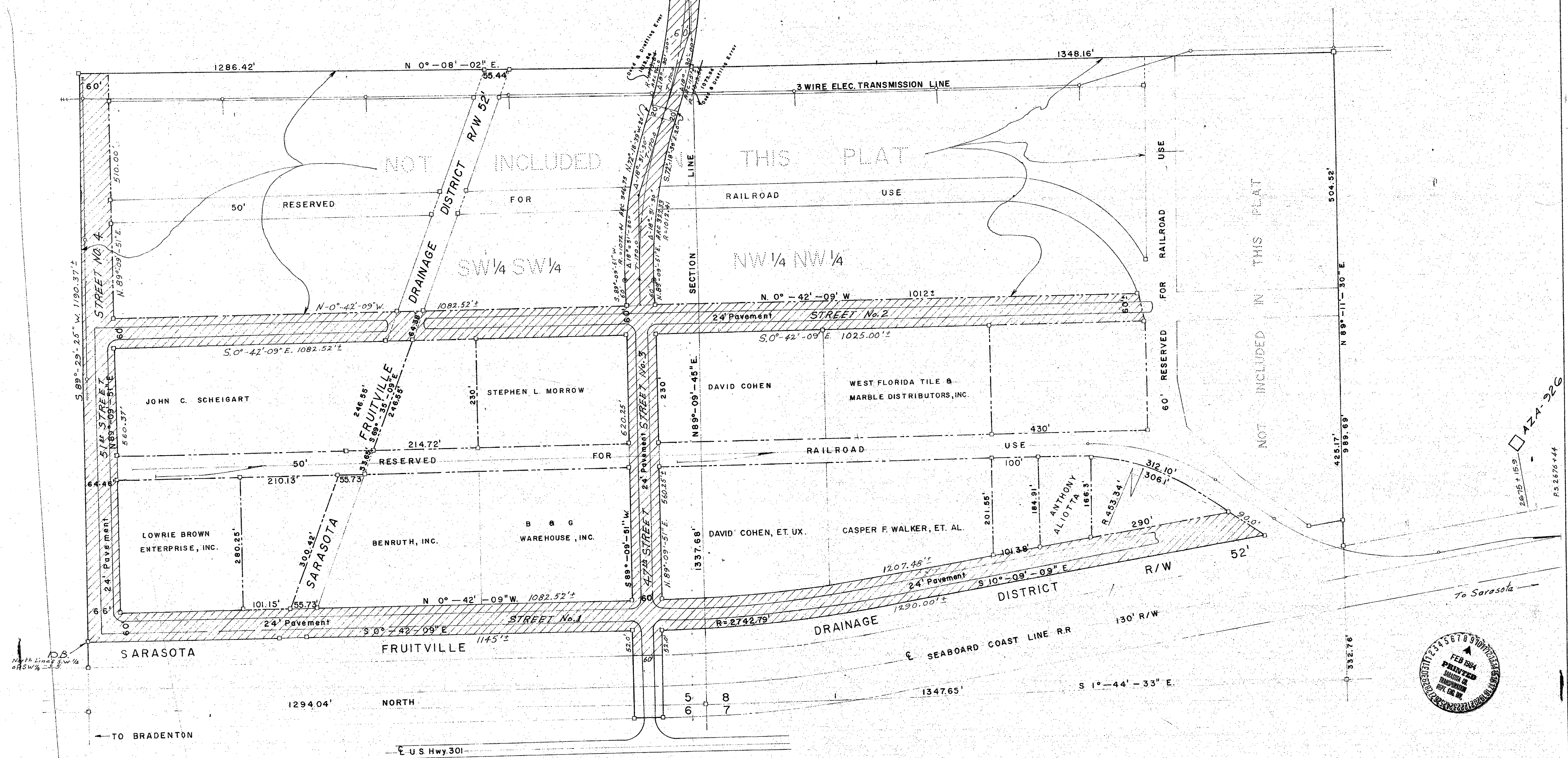
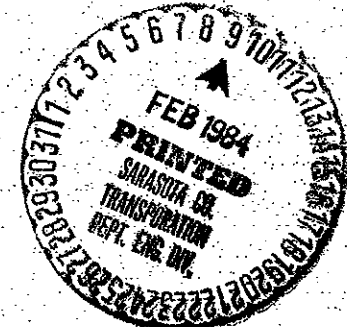


**NOTES:**  
 1. Radii reversed in deed and on drawing as shown.  
 2. Deed call "to the quarter-quarter section line between Section 5 and Section 8" in error.  
 3. Deed call, thence northerly, "along the quarter-quarter section line" in error.



**NOTES:**  
 1. R/W shown cross hatched hereon conveyed to Sarasota County by Tampa Southern Railroad Company by deed dated Nov. 15, 1971 and recorded Dec. 15, 1971 in O.R.B. 936 at Page 379.  
 2. R/W accepted by the Board of County Commissioners on Dec. 14, 1971 per Minute Book 35 at Page 39.

APPROVED BY: <i>[Signature]</i> COUNTY ENGINEER		<b>47th ST. IND. AREA STREET ALIGNMENT</b>	
REVISIONS	BY	DATE	DEPARTMENT OF ENGINEERING SARASOTA COUNTY, FLORIDA
			DATE: SEPT. 1971 C'kd. H.T.W./JED.
			SCALE: 1" = 100' PROJ. NO.
			DRAWN BY: A.P.S. DWG. NO. 1 of 1



2675 + 15.9  
 47A-226  
 P. 2676 + 44