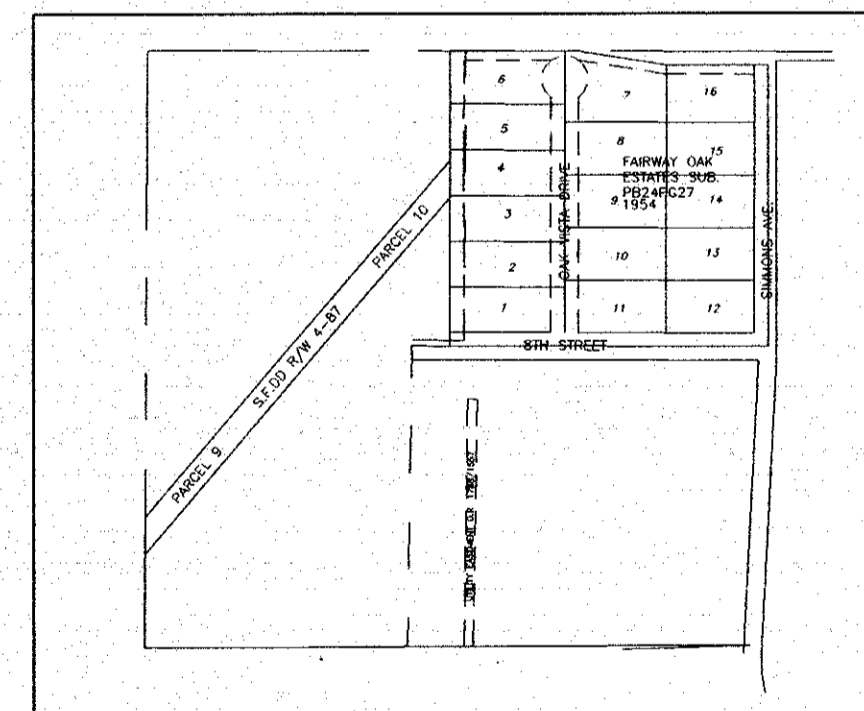
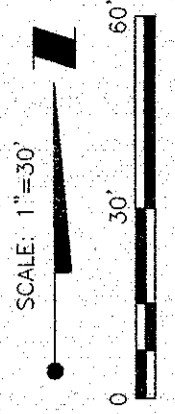
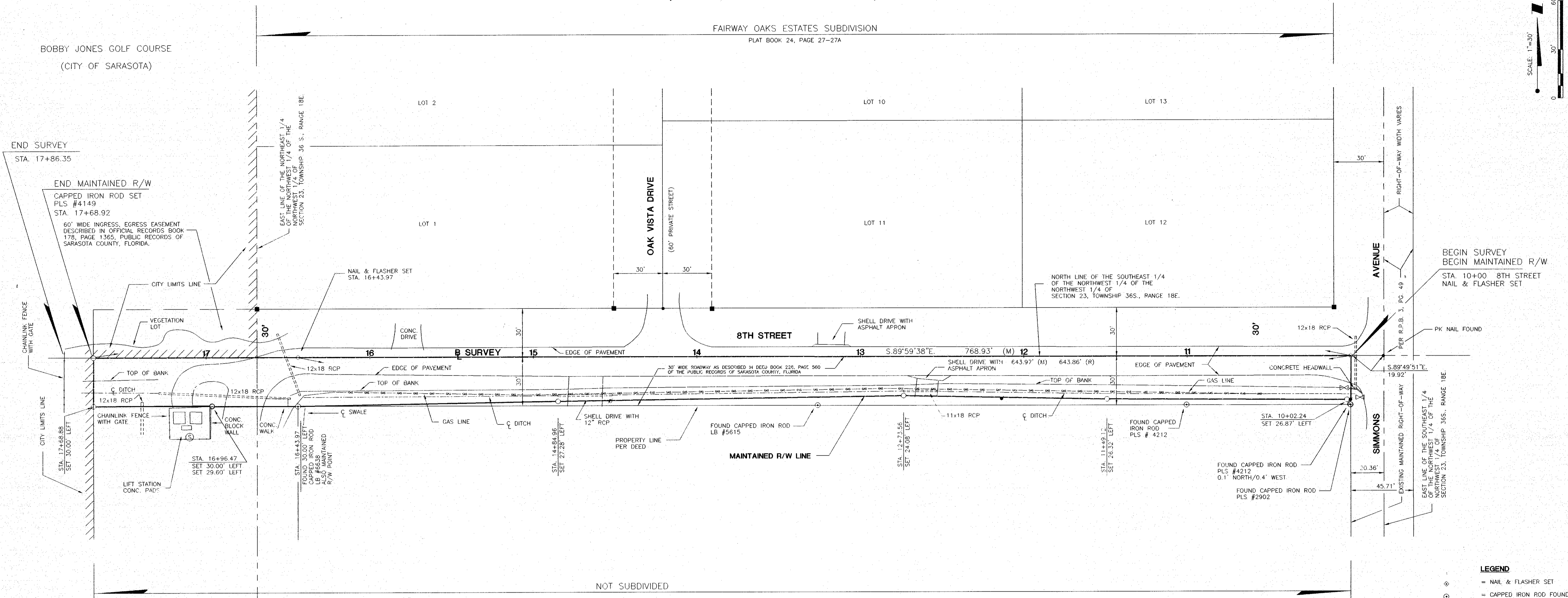


SECTION 23, TOWNSHIP 36 SOUTH, RANGE 18 EAST



- LEGEND**
- ◆ = NAIL & FLASHER SET
 - = CAPPED IRON ROD FOUND
PLS NUMBER AS NOTED
 - = PK NAIL FOUND
 - = CONCRETE MONUMENT NO
PLS NUMBER UNLESS NOTED
 - = CAPPED IRON ROD SET
PLS #4149
 - ⊙ = TELEPHONE POLE
 - ⊙ = POWER POLE
 - ⊙ = SEWER VALVE
 - ⊙ = REINFORCED CONCRETE PIPE
 - ⊙ = CENTERLINE
 - ⊙ = BASELINE
 - CONC. = CONCRETE
 - STA. = STATION
 - R/W = RIGHT-OF-WAY
 - P.P.B. = ROAD PLAT BOOK
 - PG. = PAGE
 - PLS = PROFESSIONAL LICENSED SURVEYOR
 - LB = LICENSED BUSINESS
 - ⊙ = SANITARY MANHOLE

FILED FOR RECORD
98 NOV -3 PM 12:17
KAREN E. RUSHING
CLERK OF CIRCUIT COURT
SARASOTA COUNTY, FL.

THIS IS TO CERTIFY THAT THE NUMBERED SHEET ONE (1) OF ONE (1) CONSTITUTES THE OFFICIAL MAINTENANCE MAP SHOWING THE LOCATION AND SURVEY BY THE SARASOTA COUNTY TRANSPORTATION DEPARTMENT FOR 8TH STREET, BEING IN SECTION 23, TOWNSHIP 36 SOUTH, RANGE 18 EAST, SARASOTA COUNTY FLORIDA PURSUANT TO THE PROVISIONS OF CHAPTER 95.361, FLORIDA STATUTES OF 1991.

FILED FOR RECORD IN ROAD PLAT BOOK 4 AT PAGE 16 OF THE PUBLIC RECORDS OF SARASOTA COUNTY, FLORIDA, THIS DAY OF November, A.D. 1998.

KAREN E. RUSHING
CLERK OF CIRCUIT COURT
SARASOTA COUNTY, FLORIDA
BY: *Clara M. Haral*
DEPUTY CLERK

THIS IS TO CERTIFY THAT THIS MAINTAINED MAP WAS APPROVED BY RESOLUTION NO. 98-277 PASSED AND ADOPTED BY THE BOARD OF COUNTY COMMISSIONERS OF SARASOTA COUNTY, FLORIDA ON THE 27 DAY OF October, A.D. 1998.

ATTEST:
KAREN E. RUSHING, CLERK OF THE CIRCUIT COURT AND EX-OFFICIO CLERK OF THE BOARD OF COUNTY COMMISSIONERS OF SARASOTA COUNTY, FLORIDA BY: *John Harris*
DEPUTY CLERK

THIS IS TO CERTIFY THAT THE LIMITS OF THE ROADWAY OUTSIDE OF PLATTED RIGHT-OF-WAY AS SHOWN CROSS-HATCHED HEREON, HAS BEEN MAINTAINED CONTINUOUSLY FOR OVER FOUR (4) YEARS.
John Harris
A.D. BLACKWOOD
MANAGER
ROAD & BRIDGE DIVISION

DESCRIPTION
THAT PART OF 8th STREET BEGINNING AT THE WESTERLY RIGHT-OF-WAY LINE OF SIMMONS AVENUE PER R.P.B. 3, PG. 49 OF THE PUBLIC RECORDS OF SARASOTA COUNTY, FLORIDA AND TERMINATING AT THE EASTERLY LIMITS LINE OF THE CITY OF SARASOTA BEING APPROXIMATELY 768 FEET MORE OR LESS IN LENGTH.

- SURVEYOR'S NOTES**
- BEARINGS SHOWN HEREON REFER TO AN ASSUMED MERIDIAN. THE NORTH LINE OF THE SOUTHEAST 1/4 OF THE NORTHWEST 1/4 OF THE NORTHWEST 1/4 OF SECTION 23, TOWNSHIP 36 SOUTH, RANGE 18 EAST, BEARING BEING S.89°59'38"E.
 - A CHANGE OR JOG ON THE MAINTAINED RIGHT-OF-WAY LINE IS NOT NECESSARILY LOCATED AT AN INTERSECTING PROPERTY LINE.
 - IMPROVEMENTS SUCH AS, BUT NOT LIMITED TO, UNDERGROUND UTILITIES, LANDSCAPE FEATURES, ETC., HAVE NOT BEEN LOCATED EXCEPT AS SHOWN.
 - MAINTAINED RIGHT-OF-WAY IS APPROXIMATELY BACK TOP OF BANK.

SURVEYOR'S CERTIFICATE
I HEREBY CERTIFY THAT THIS R/W MAP (SHEET 1 OF 1) REPRESENTS A SURVEY OF THE ROAD ALIGNMENT AS SHOWN HEREON, THAT THE SURVEY WAS RECENTLY PERFORMED UNDER MY DIRECTION, AND THAT IT IS TRUE AND CORRECT TO THE BEST OF MY KNOWLEDGE AND BELIEF, AND THAT THE SURVEY MEETS THE MINIMUM TECHNICAL STANDARDS AS SET FORTH BY THE FLORIDA BOARD OF PROFESSIONAL LAND SURVEYORS IN CHAPTER 61G17-6, F.A.C. PURSUANT TO SECTION 472.027, F.S.

DATE OF SURVEY: JULY 29, 1998
DATE MONUMENTS SET: AUGUST 21, 1998

John Harris
G.M. FOSNESS, COUNTY SURVEYOR
PROFESSIONAL SURVEYOR AND MAPPER NO. 4149
STATE OF FLORIDA
1301 GATTEMEN ROAD
SARASOTA, FLORIDA 34232-9631

SARASOTA COUNTY TRANSPORTATION DEPARTMENT
ENGINEERING DIVISION - SURVEY - MAPPING SECTION

MAINTAINED RIGHT-OF-WAY MAP

8TH STREET - SIMMONS AVENUE TO SARASOTA CITY LIMITS

DRAWN	BY	DATE	
KLEJZ		8/19/98	
CHECKED	MMWATS	8/25/98	
COMPARED	J.R.F.	9/02/98	
REF: RPB 3, PG. 40, P.B. 24, PG. 27-29, 1/2 SECTION 44, BRITT SURVEY, F.B. 404, PG. 49			
SCALE	PROJECT NO.	98046	SHEET 1 OF 1

B.C.C. RESO. 98-277 O.R.I. NO. 1998/45148