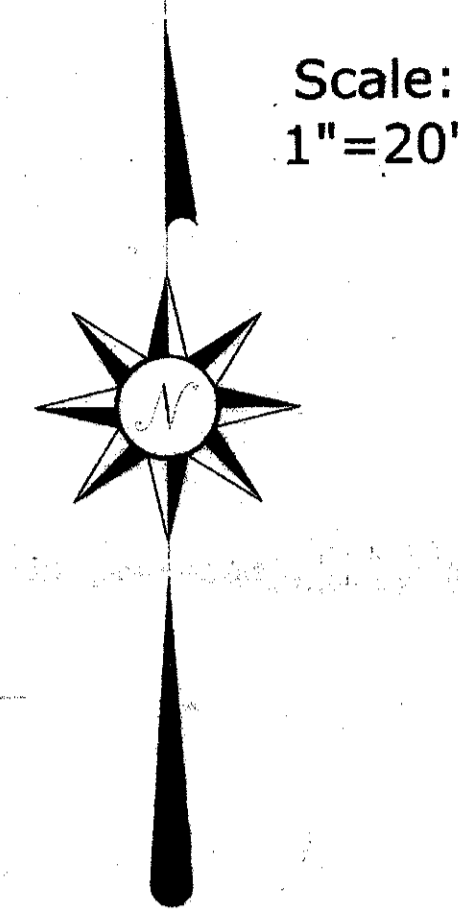
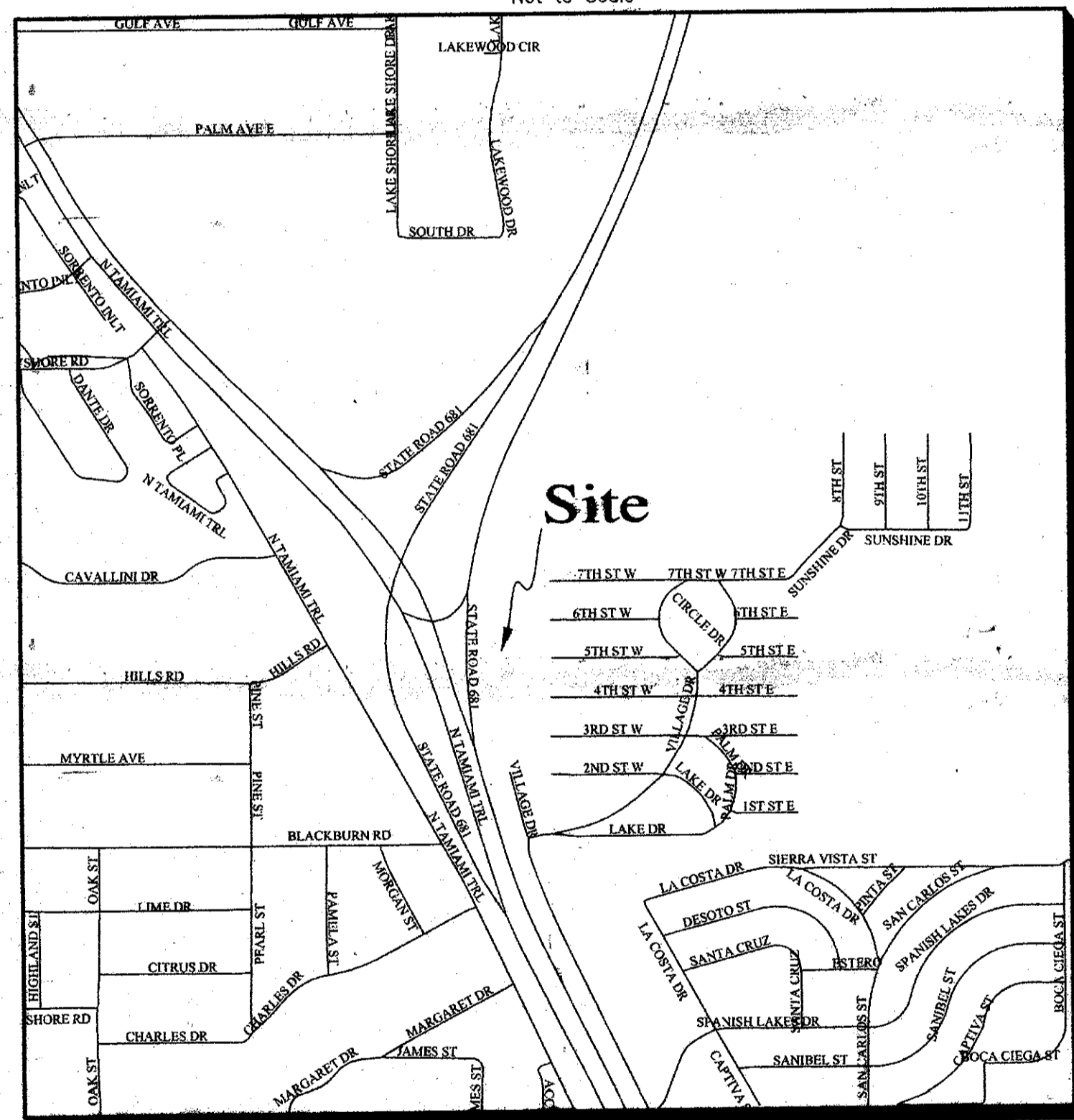


Section 25, Township 38 South, Range 18 East



LEGEND
 O.R.B. Official Records Book
 (D) Description/Deed Information
 Tang. Tangent Bearing
 (RP) Road Plat Book
 DOT Department of Transportation
 (F) Field Measurement
 (C) Calculated Dimension
 Sign
 R Right
 L Left

Location Map
Not to Scale



SURVEYOR'S NOTES

- Bearings shown hereon are based on Florida State Plane Coordinate System (West Zone) North American Datum (NAD) 1983(1990) adjustment. The bearing between the Southwest corner of Section 24, Township 38 South, Range 18 East (Northing: 1025078.07, Easting: 504741.25) and the Southwest corner of Section 25, Township 38 South, Range 18 East (Northing: 1019730.34, Easting: 504701.69), being S.31°25'26"W.
- There may exist other underground fixed interior improvements that are not visible and are not a part of this survey.

THIS IS TO CERTIFY THAT NUMBERED SHEET ONE (1) OF ONE (1) CONSTITUTES THE OFFICIAL MAINTENANCE MAP SHOWING THE LOCATION AND SURVEY BY MSB, SURVEYING, INC., FOR STATE ROAD 681, BEING IN SECTION 25, TOWNSHIP 38 SOUTH, RANGE 18 EAST, SARASOTA COUNTY, FLORIDA PURSUANT TO THE PROVISIONS OF CHAPTER 95.361, FLORIDA STATUTES OF 2004.

FILED FOR RECORD IN ROAD PLAT BOOK 4 AT PAGE 44
 OF THE PUBLIC RECORDS OF SARASOTA COUNTY, FLORIDA THIS 21st
 DAY OF OCTOBER A.D. 2005.

KAREN E. RUSHING
 CLERK OF CIRCUIT COURT
 SARASOTA COUNTY, FLORIDA
 BY: *Fred Hopch*
 DEPUTY CLERK



THIS IS TO CERTIFY THAT THIS MAINTAINED MAP WAS APPROVED BY RESOLUTION NO. 2005-216 PASSED AND ADOPTED BY THE BOARD OF COUNTY COMMISSIONERS OF SARASOTA COUNTY, FLORIDA, ON THE 11th DAY OF OCTOBER A.D. 2005.

Karen E. Rushing
 CHAIRMAN
 ATTEST
 KAREN E. RUSHING, CLERK OF CIRCUIT COURT AND EX-OFFICIO CLERK OF THE BOARD OF COUNTY COMMISSIONERS OF SARASOTA COUNTY, FLORIDA BY: *Paula J. Minton*

DEPUTY CLERK THIS IS TO CERTIFY THAT THE LIMITS OF THE ROADWAY OUTSIDE OF THE PLATTED RIGHT-OF-WAY AS SHOWN CROSS-HATCHED HEREON, HAS BEEN MAINTAINED CONTINUOUSLY FOR OVER FOUR (4) YEARS.

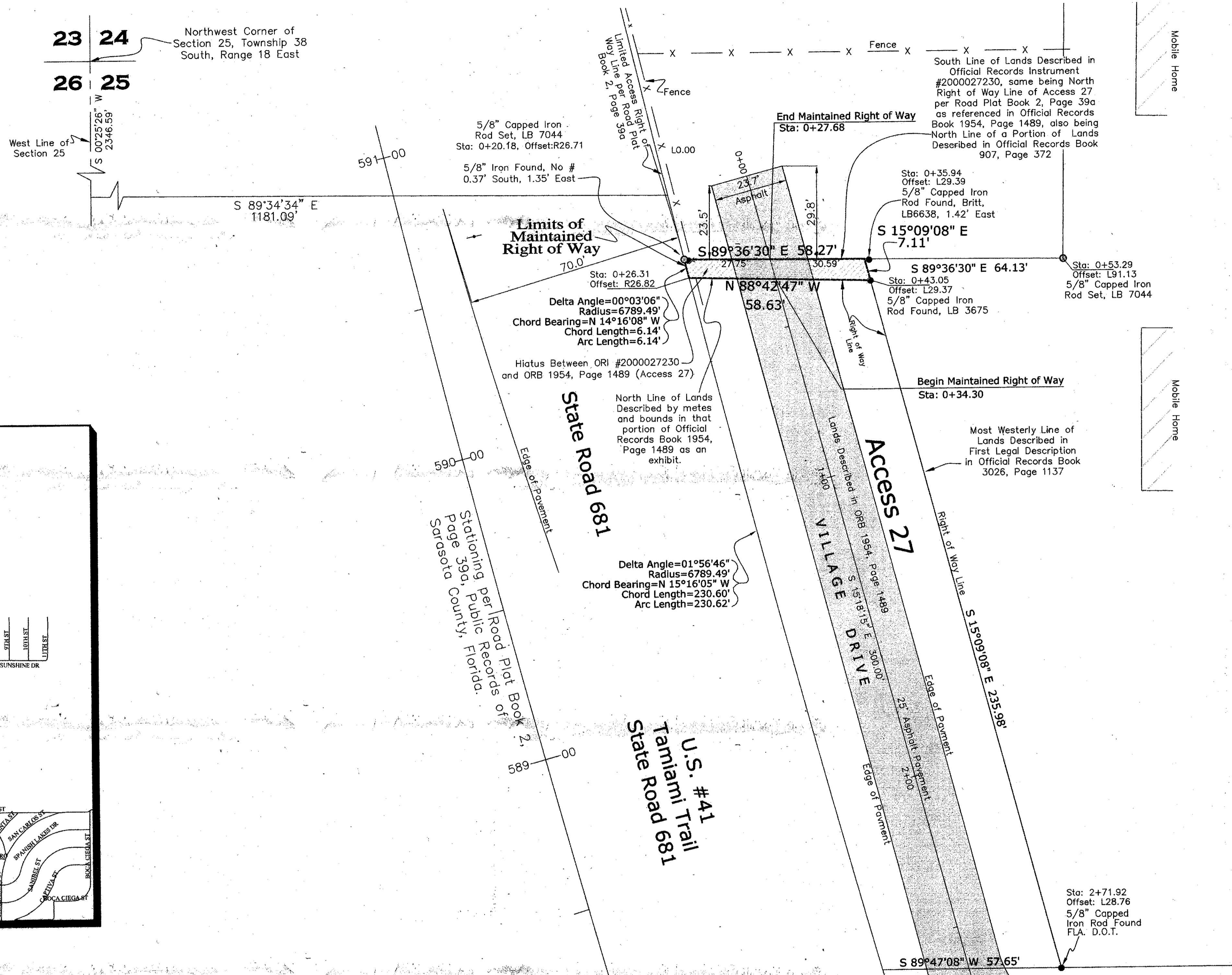
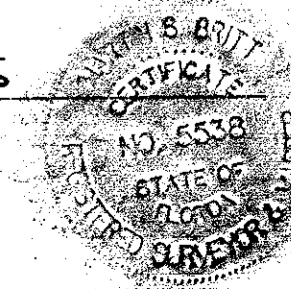
Ben Newman 08/16/05
 BEN NEWMAN
 PUBLIC WORKS INFRASTRUCTURE
 ROAD & BRIDGE

SURVEYOR'S CERTIFICATE

I HEREBY CERTIFY THAT THIS R/W MAP (SHEET 1-1) REPRESENTS A SURVEY OF THE ROAD ALIGNMENT AS SHOWN HEREON, THAT THE SURVEY WAS RECENTLY PERFORMED UNDER MY DIRECTION, AND THAT IT IS TRUE AND CORRECT TO THE BEST OF MY KNOWLEDGE AND BELIEF, AND THAT THE SURVEY MEETS THE MINIMUM TECHNICAL STANDARDS AS SET FORTH BY THE FLORIDA BOARD OF PROFESSIONAL LAND SURVEYORS IN CHAPTER 61G17-6, F.A.C. PURSUANT TO SECTION 472.027, F.S.

DATE OF SURVEY: 6/6/05
 DATE MONUMENTS: 6/6/05

Mat O'Boyle 8/18/05
 MARTIN S. BRITT
 PROFESSIONAL LAND SURVEYOR NO. 5538
 MSB, SURVEYING, INC.
 40 SARASOTA CENTER BOULEVARD, UNIT H
 SARASOTA, FLORIDA 34240



FILED FOR RECORD
 2005 OCT 21 PM 12:14
 KAREN E. RUSHING
 CLERK OF CIRCUIT COURT
 SARASOTA COUNTY, FL

SARASOTA COUNTY PLANNING AND DEVELOPMENT SERVICES SURVEY - MAPPING SECTION			
MAINTAINED RIGHT OF WAY MAP			
ACCESS #27 (VILLAGE DRIVE) INTERSECTION OF STATE ROAD 45 & STATE ROAD 681			
BY	DATE	DATE	
DRAWN	BY	08/11/05	8/24/05
CHECKED			8/25/05
COMPARED			
REF: FIELD BOOK 1/2 SECTION MAP #164			
SCALE: 1" = 20'	PROJECT NO.	SHEET 1 OF 1	

B.C.C. RESO. 2005-216 O.R.L. 2005229619