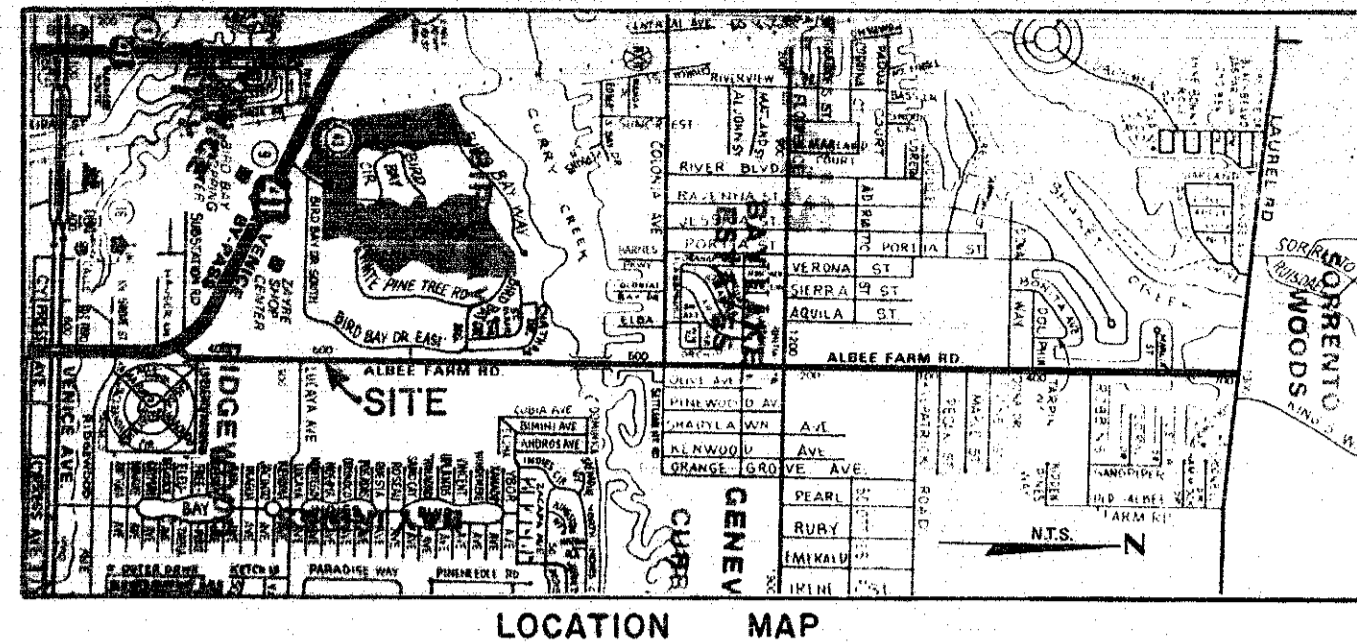
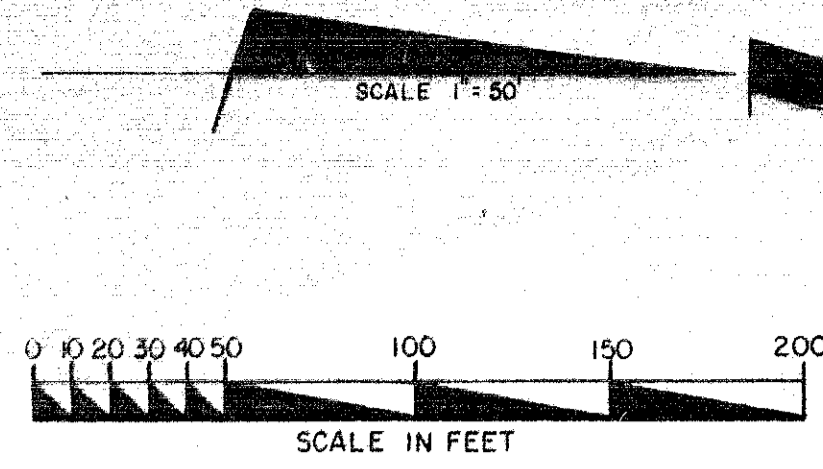


SEC. 7, TWP 39S., RNG. 19 E.

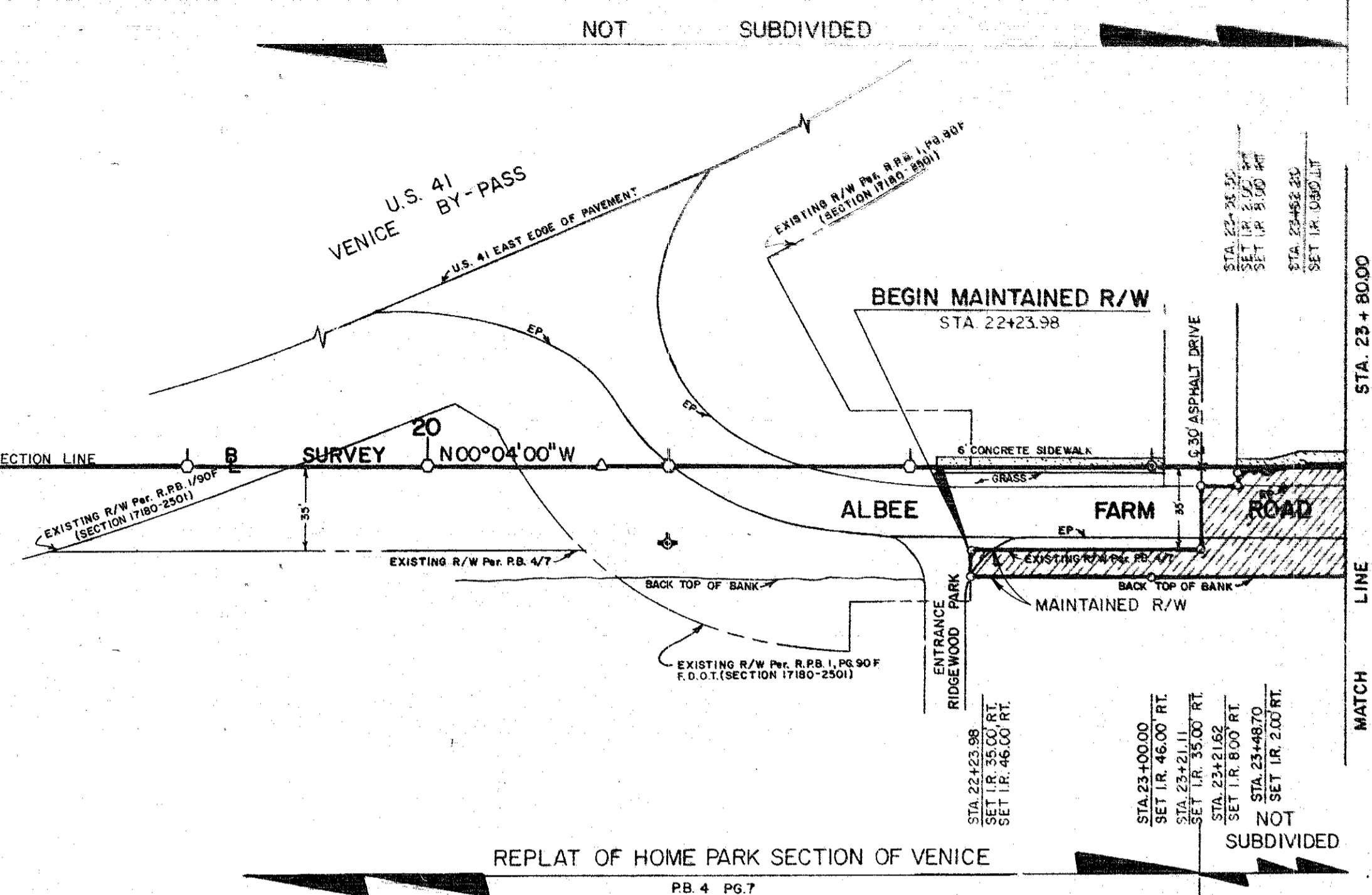


BEGIN SURVEY
STA. 16+00.00

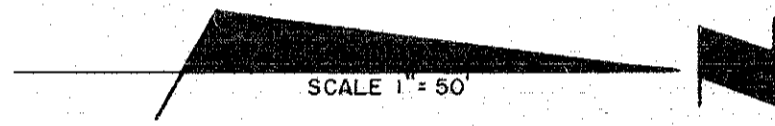
SW COR. NW 1/4
SEC. 8, TWP 39S., RNG. 19E.
COR. NO. 507
D.N.R. NO. 29820
D.N.R. SHOWN FOUND 0.10' BELOW SURFACE
SARCO NAIL & DISC SET ON PAVEMENT
& SARCO REFERENCE STRADDLE POINTS
SET AT 2.0'

LEGEND OF ABBREVIATIONS

AVE = AVENUE	EASE = EASEMENT	NO. = NUMBER	R.R. = RAILROAD
BLK = BLOCK	EP = EDGE OF PAVEMENT	N.O.S. = NATIONAL OCEAN SERVICE	RT. = RIGHT
BLVD. = BOULEVARD	F.A.C. = FLORIDA ADMINISTRATION CODE	O.A. = OVER ALL	R/W = RIGHT-OF-WAY
B.M. = BENCH MARK	F.D.O.T. = FLORIDA DEPARTMENT OF TRANSPORTATION	O/E = OVERHEAD ELECTRIC	S. = SOUTH
B.T.O.B. = BACK TOP OF BANK	F.L. = FLORIDA	O.R.B. = OFFICIAL RECORDS BOOK	SE = SOUTHEAST
C.B. = CONDOMINIUM BOOK	F.P. = FOUND	O.T. = ORDER OF TAKING	SEC = SECTION
C.C.C.L. = COASTAL CONSTRUCTION CONTROL LINE	F.P. & L. = FLORIDA POWER AND LIGHT	P.B. = PLAT BOOK	S.F.D.D. = SARASOTA-FRUITVILLE DRAINAGE DISTRICT
CH = CHORD	G.T.E. = GENERAL TELEPHONE ELECTRIC	P.C. = POINT OF CAPTURE	S.R. = STATE ROAD
CH. BRG. = CHORD BEARING	I.P. = IRON PIPE	P.C.P. = PERMANENT CONTROL POINT	ST. = STREET
C.M. = CENTERLINE	I.R. = IRON ROD	P.I. = POINT OF INTERSECTION	STA. = STATION
C.M.P. = CORRUGATED METAL PIPE	L. = LENGTH	P.L. = PROFESSIONAL LAND SURVEYOR	SUB = SUBDIVISION
CO. = COUNTY	M.H.W.L. = MEAN HIGH WATER LINE	P.L.S. = PROFESSIONAL LAND SURVEYOR	SW = SOUTHWEST
CONDO. = CONDOMINIUM	MON. = MONUMENT	P.R.C. = POINT OF REVERSE CURVE	T.A. = TANGENT
CONST. = CONSTRUCTION	M. = MAINTAINED	P.R.M. = PERMANENT REFERENCE MONUMENT	T.B. = TOP OF BANK
COR. = CORNER	N. = NORTH	P.T. = POINT OF TANGENCY	TWP. = TOWNSHIP
D.B. = DEED BOOK	N. & D. = NAIL AND DISC	R. = RADIUS	U/E = UNDERGROUND ELECTRIC
D.N.R. = DEPARTMENT OF NATURAL RESOURCES	NE = NORTH EAST	R.C.P. = REINFORCED CONCRETE PIPE	U.S. = UNITED STATES
D.O.T. = DEPARTMENT OF TRANSPORTATION	N.G.V.D. = NATIONAL GEODETIC VERTICAL DATUM	REF. = REFERENCE	VEG. = VEGETATION
DR. = DRIVE		RESUB. = RESUBDIVISION	W. = WEST
DRAIN. = DRAINAGE		RNG. = RANGE	
E. = EAST		R.P.B. = ROAD PLAT BOOK	

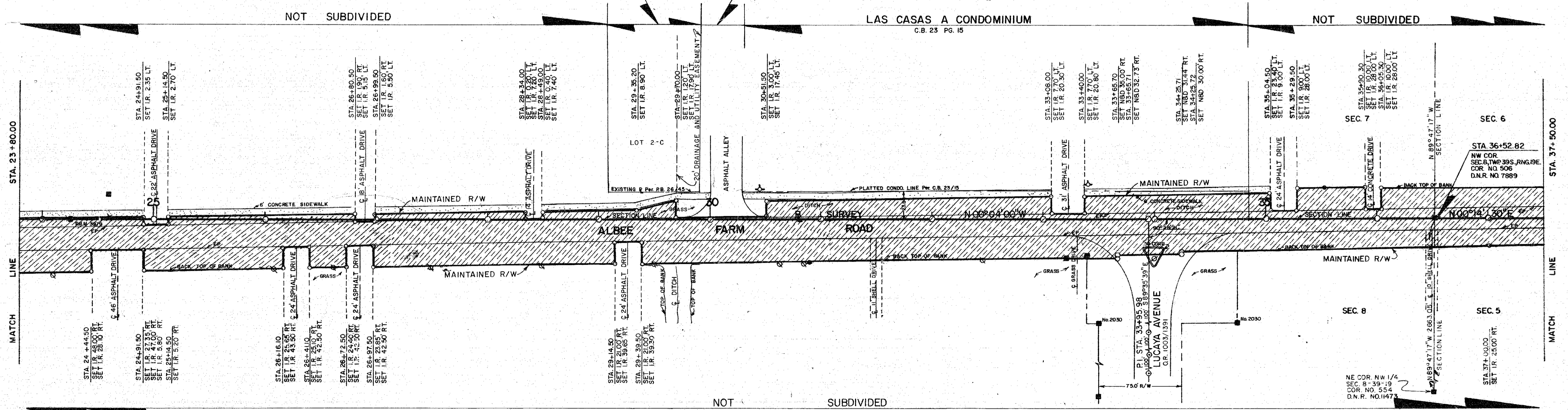


SEC. 8, TWP 39S., RNG. 19 E.



FIRST ADDITION TO BOB'S SUBDIVISION-A REPLAT
P.B. 26 PG. 45

SEC. 7, TWP 39S., RNG. 19 E.



SEC. 8, TWP 39S., RNG. 19 E.

THIS IS TO CERTIFY THAT THE NUMBERED SHEETS FIVE (5) OF FIVE (5) CONSTITUTES THE OFFICIAL MAINTENANCE MAP SHOWING THE LOCATION AND SURVEY BY THE SARASOTA COUNTY, FLORIDA, TRANSPORTATION DEPARTMENT FOR ALBEE FARM ROAD, LYING BETWEEN TAMIAHI TRAIL (U.S. 41 BY-PASS) AND LAUREL ROAD, ALL BEING IN SECTIONS 31 AND 32, TOWNSHIP 39S., RANGE 19E. AND SECTIONS 5, 6, 7 AND 8, TOWNSHIP 39S., RANGE 19E., SARASOTA COUNTY, FLORIDA PURSUANT TO THE PROVISIONS OF CHAPTER 95.361, FLORIDA STATUTES OF 1987.

ACCEPTED FOR FILES AND RECORDED IN THE PUBLIC RECORDS OF SARASOTA COUNTY, FLORIDA THIS 3rd DAY OF JANUARY A.D. 1990, ROAD PLAT BOOK PAGE 31-310

THIS IS TO CERTIFY THAT THIS MAINTAINED MAP WAS APPROVED BY RESOLUTION NO. 290-07 PASSED AND ADOPTED BY THE BOARD OF COUNTY COMMISSIONERS OF SARASOTA COUNTY, FLORIDA, ON THE 12th DAY OF JANUARY A.D. 1990

CHAIRMAN
ATTEST:
KAREN E. RUSHING, CLERK OF THE CIRCUIT COURT AND EX-OFFICIO CLERK OF THE BOARD OF COUNTY COMMISSIONERS OF SARASOTA COUNTY, FLORIDA BY:
Susan Kay Gastland
DEPUTY CLERK
THIS IS TO CERTIFY THAT THE LIMITS OF THE ROADWAY OUTSIDE OF PLATTED RIGHT-OF-WAY AS SHOWN CROSS-HATCHED HEREON, HAS BEEN MAINTAINED CONTINUOUSLY FOR OVER FOUR (4) YEARS WITHOUT INTERRUPTION.
Earl Van Ho 11-20-89
EARL VAN HO
DEPUTY DIRECTOR
HIGHWAY MAINTENANCE

SURVEYOR'S NOTES

- BEARINGS SHOWN ARE BASED ON TAMIAHI TRAIL (U.S. 41 BY-PASS) RIGHT-OF-WAY MAP RECORDED IN ROAD PLAT BOOK 1, PAGE 306, THE WEST LINE OF SEC. 8, TWP 39S., RNG. 19 E., BEING N00°04'00"W, REFERENCES: FB. 328/14-53, F.B. 24/39, F.B. 26/45, FB. 10/56A, FB. 27/48, FB. 22/46-48D, FB. 23/5A, FB. 12/21, FB. 2/69, F.B. 18/22, FB. 4/7.
- A CHANGE OR JOG ON THE MAINTAINED RIGHT-OF-WAY LINE IS NOT NECESSARILY LOCATED AT AN INTERSECTING PROPERTY LINE.
- THERE HAS BEEN NO TITLE SEARCH MADE TO VERIFY THE FOLLOWING RESEARCH:
A. B.C.C.M.B. 2, PAGE 22 OF MAY 4, 1925; RESOLUTION PASSED CALLING FOR AN ELECTION ON JUNE 16, 1925, FOR COUNTY ROAD BONDS ON THE CONSTRUCTION OF 33 COUNTY ROADS, VENICE-BY-WAY ROAD BEING ROAD NO. 5 AT A COST OF \$20,000.00. THE R/W WIDTH WAS NOT IDENTIFIED.
B. THE ADVERTISED DESCRIPTION IS AS FOLLOWS: ALONG THE ROAD KNOWN AS VENICE-BY-WAY, BEGINNING AT THE CORNER SOUTH OF VILLA NOKOMIS AND CONTINUING BY KNIGHT'S CHAPEL TO VENICE, ALL ACCORDING TO BENSON'S SURVEY OF MAY 9, 1924, ABOUT 3.1 MILES IN LENGTH, WIDENING HARD SURFACE FROM 9 FEET TO 16 FEET AND APPLYING BITUMINOUS TREATMENT TO ENTIRE SURFACE \$20,000.00.
C. B.C.C.M.B. 2, PAGE 29 OF JUNE 16, 1925; CANVASSED ROAD ELECTION RESULTS WITH ROAD NO. 5 GETTING 276 VOTES FOR AND 37 AGAINST.

SURVEYOR'S CERTIFICATE

I HEREBY CERTIFY THAT THIS MAINTAINED R/W MAP REPRESENTS A BOUNDARY SURVEY OF THE ROAD AS SHOWN, THAT THE SURVEY WAS RECENTLY PERFORMED UNDER MY DIRECTION, AND THAT IT IS TRUE AND CORRECT TO THE BEST OF MY KNOWLEDGE AND BELIEF, AND THAT IT MEETS THE MINIMUM TECHNICAL STANDARDS FOR LAND SURVEYING IN THE STATE OF FLORIDA (CH 21 HH-6, F.A.C.).

DATE OF SURVEY: 11-7-88

E.R. Emerson
E.R. EMERSON, COUNTY SURVEYOR
PROFESSIONAL LAND SURVEYOR NO. 1867
STATE OF FLORIDA
1301 CATTLEMAN ROAD
SARASOTA, FLORIDA 34232-9631

11-28-89
DATE

LEGEND

- = NAIL & DISC FOUND
- = NAIL & DISC SET
- = IRON ROD SET WITH RED CAP STAMPED COUNTY R/W PLS 1867
- = IRON ROD FOUND
- = RAILROAD SPIKE FOUND
- △ = HUB SET
- = CONCRETE MONUMENT FOUND
- ⊙ = REFERENCE POINT SET
- ⊙ = DRILL HOLE IN SIDEWALK
- × = "X" CUT IN SIDEWALK
- ⊕ = CONCRETE POWER POLE
- ⊕ = FIRE HYDRANT
- EP = EDGE OF PAVEMENT
- = STORMWATER GRATE

SARASOTA COUNTY TRANSPORTATION DEPARTMENT
ENGINEERING DIVISION, CADASTRAL SECTION

MAINTAINED RIGHT OF WAY MAP

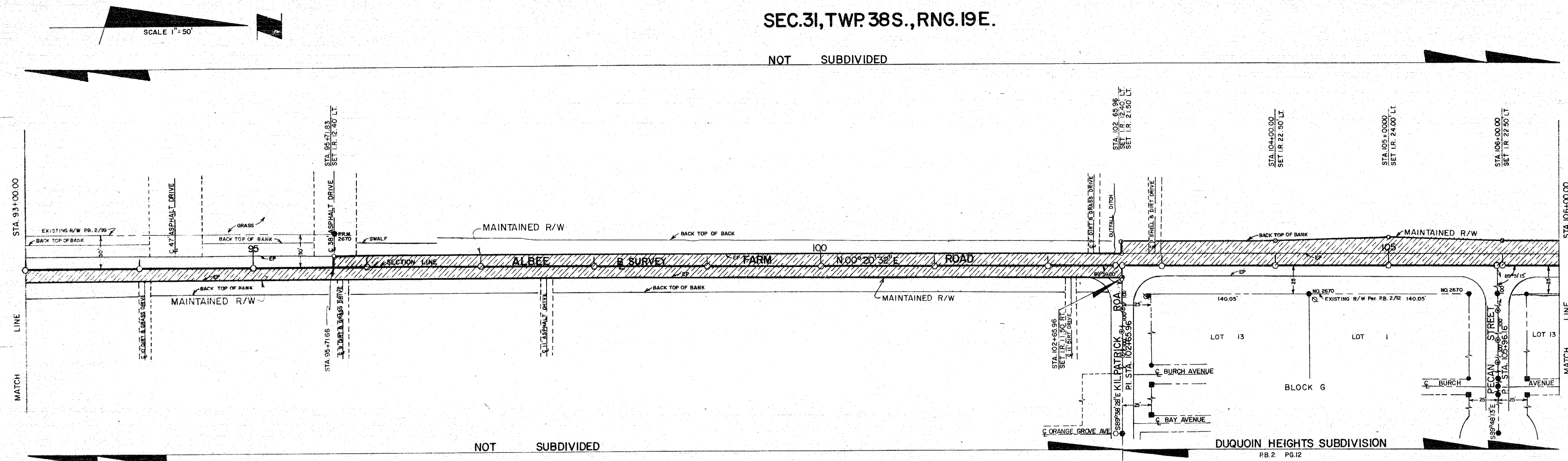
ALBEE FARM ROAD
TAMIAHI TRAIL (U.S. 41 BY-PASS) TO LAUREL ROAD

DRAWN	T. OWEN	DATE	7-1-88
CHECKED	<i>[Signature]</i>	DATE	11-15-89
COMPARED	<i>[Signature]</i>	DATE	11-2-89
REF.	SEE SURVEYOR'S NOTES NUMBER 2		
SCALE	1" = 50'	PROJECT NO.	8753
		SURVEY PROJ.	88052
		SHEET	1 OF 5

Karen E. Rushing
CLERK OF THE CIRCUIT COURT
SARASOTA COUNTY, FLORIDA

SEC.31, TWP.38S., RNG.19E.

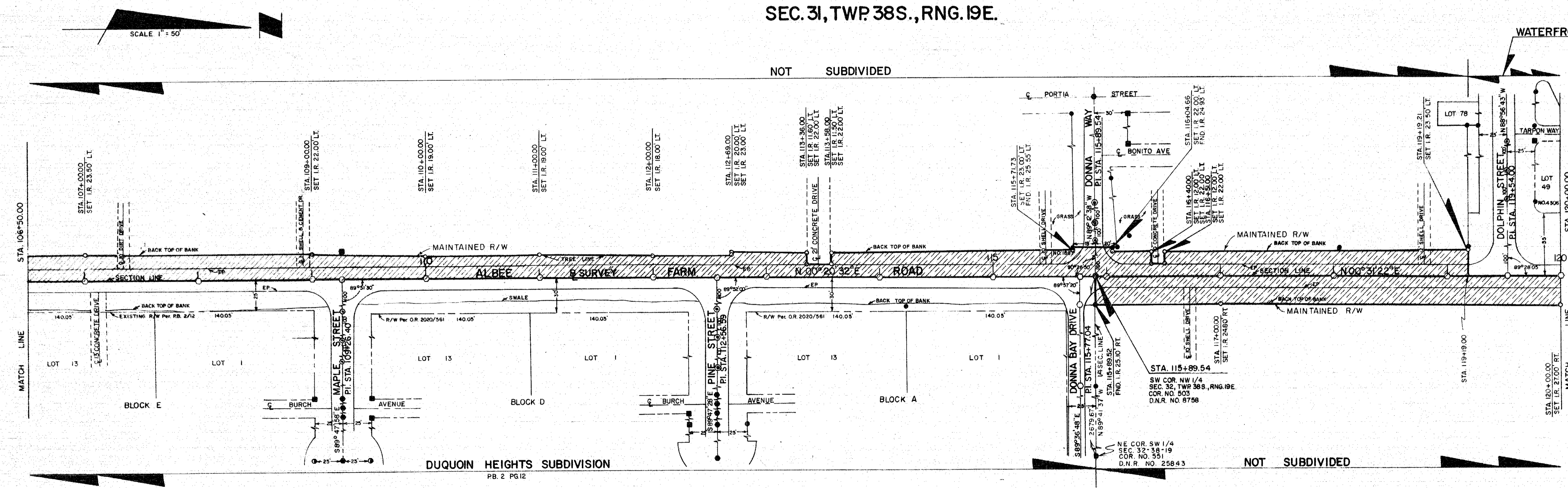
NOT SUBDIVIDED



SEC.32, TWP.38S., RNG.19E.

SEC.31, TWP.38S., RNG.19E.

NOT SUBDIVIDED



SEC.32, TWP.38S., RNG.19E.

SARASOTA COUNTY TRANSPORTATION DEPARTMENT
ENGINEERING DIVISION, CADASTRAL SECTION

MAINTAINED RIGHT OF WAY MAP

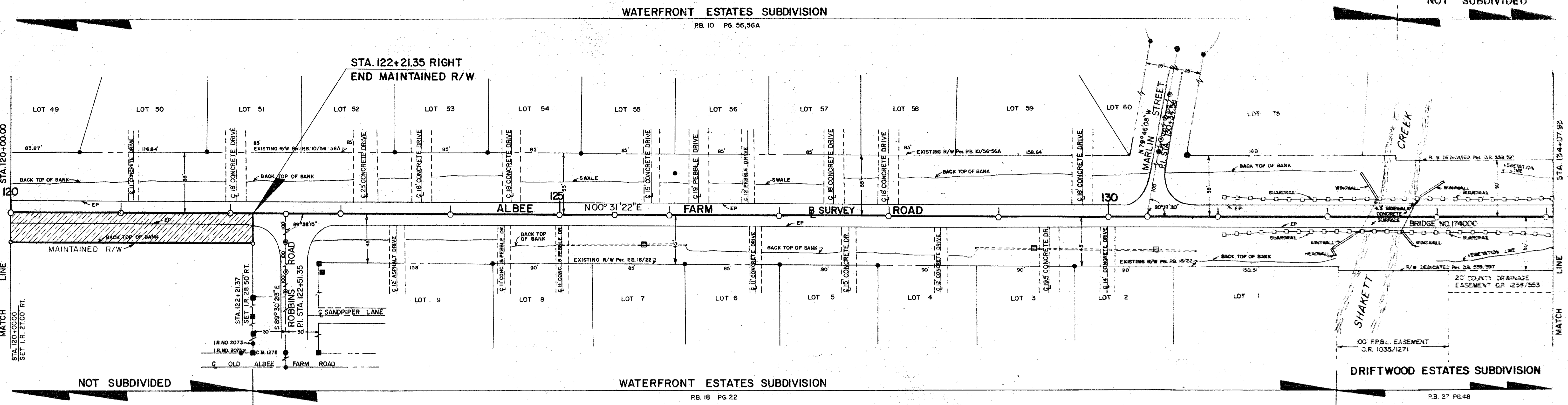
ALBEE FARM ROAD
TAMIAMI TRAIL (U.S. 41 BY-PASS) TO LAUREL ROAD

BY	DATE
DRAWN T. OWEN	7-1-88
CHECKED [Signature]	11-18-89
COMPARED [Signature]	11-18-89

SEE SURVEYOR'S NOTES NUMBER 2

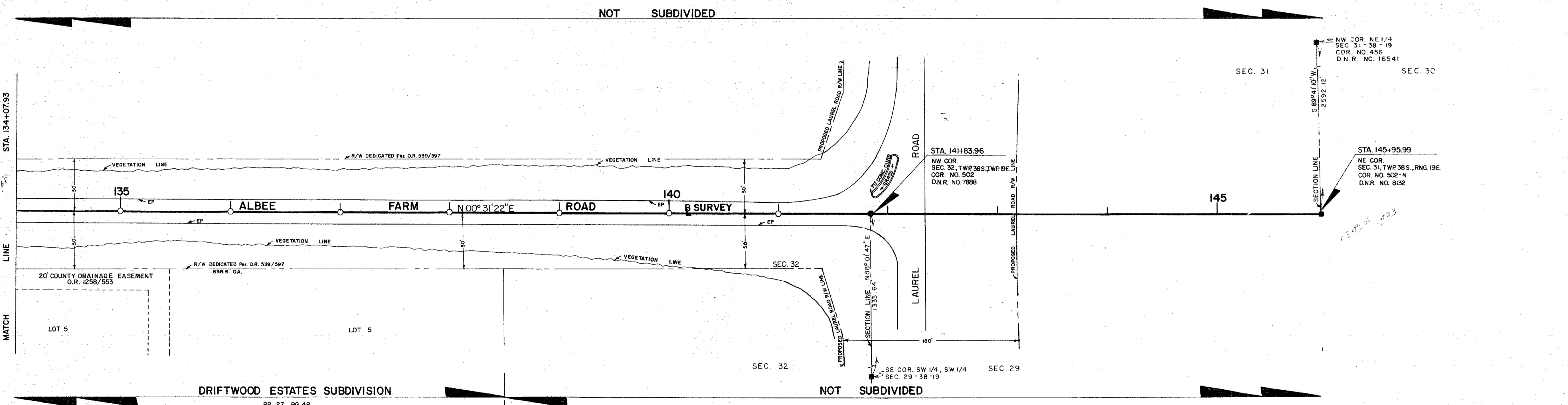
SCALE 1" = 50' PROJECT NO. 8783 SURVEY PLAN 80052 SHEET 1 OF 5

SEC.31,TWP.38S,RNG.19E.



SEC.32,TWP.38S.,RNG.19E.

SEC.31,TWP.38S.,RNG.19E.



SEC.32,TWP.38S.,RNG.19E.

SARASOTA COUNTY TRANSPORTATION DEPARTMENT
ENGINEERING DIVISION, CADASTRAL SECTION

MAINTAINED RIGHT OF WAY MAP

ALBEE FARM ROAD
TAMIAMI TRAIL (US 41 BY-PASS) TO LAUREL ROAD

BY	DATE
T. OWEN	7-1-88
CHECKED	11-15-89
COMPARED	11-3-88
PREPARED	11-3-88

SCALE 1" = 50' PROJECT NO. 8753 SURVEY PROJ. 88052 SHEET 5 OF 5