

FILED FOR RECORD
 2007 MAY 31 PM 4:37
 KAREN E. RUSHING
 CLERK OF THE CIRCUIT COURT
 SARASOTA COUNTY, FLORIDA

LEGEND OF ABBREVIATIONS

- B = BASELINE
- B.M. = BENCH MARK
- B.T.O.B. = BACK TOP OF BANK
- (C) = CALCULATED
- C.B. = CONDOMINIUM BOOK
- CH. = CHORD
- CHP. = CHAPTER
- CH. BRG. = CHORD BEARING
- C = CENTERLINE
- C.M. = CONCRETE MONUMENT
- CO. = COUNTY
- CONDO. = CONDOMINIUM
- CONST. = CONSTRUCTION
- COR. = CORNER
- D.B. = DEED BOOK
- D.N.R. = DEPARTMENT OF NATURAL RESOURCES
- D.O.T. = DEPARTMENT OF TRANSPORTATION
- DRAIN. = DRAINAGE
- EASE. = EASEMENT
- F.A.C. = FLORIDA ADMINISTRATIVE CODE
- F.B. = FIELD BOOK
- F.D.O.T. = FLORIDA DEPARTMENT OF TRANSPORTATION
- FND. = FOUND
- F.N. = FILE NUMBER
- F.P. & L. = FLORIDA POWER AND LIGHT
- G.T.E. = GENERAL TELEPHONE ELECTRIC
- I.P. = IRON PIPE
- I.R. = IRON ROD
- L = LENGTH
- L.B. = LICENSE BUSINESS
- M.H.W.L. = MEAN HIGH WATER LINE
- MON. = MONUMENT
- M/R/W. = MAINTAINED RIGHT-OF-WAY
- N. & D. = NAIL AND DISC
- N.G.V.D. = NATIONAL GEODETIC VERTICAL DATUM
- O.A. = OVER ALL
- O/E = OVERHEAD ELECTRIC
- O.R.B. = OFFICIAL RECORDS BOOK
- O.T. = ORDER OF TAKING
- P.B. = PLAT BOOK
- P.C. = POINT OF CURVATURE
- P.C.P. = PERMANENT CONTROL POINT
- P.I. = POINT OF INTERSECTION
- P.L. = PROPERTY LINE
- P.L.S. = PROFESSIONAL LAND SURVEYOR
- P.R.C. = POINT OF REVERSE CURVE
- P.R.M. = PERMANENT REFERENCE MONUMENT
- P.T. = POINT OF TANGENCY
- R = RADIUS
- REF. = REFERENCE
- RESUB. = RESUBDIVISION
- RNG. = RANGE
- R.P.B. = ROAD PLAT BOOK
- R.R. = RAILROAD
- R/W = RIGHT-OF-WAY
- SEC. = SECTION
- S.F.D.D. = SARASOTA-FRUITVILLE DRAINAGE DISTRICT
- S.R. = STATE ROAD
- STA. = STATION
- SUB. = SUBDIVISION
- T = TANGENT
- T.I.L.F. = TRUSTEES OF THE INTERNAL IMPROVEMENT FUND
- TWP. = TOWNSHIP
- U/E = UNDERGROUND ELECTRIC
- VEG. = VEGETATION

SURVEY CERTIFICATION

I HEREBY CERTIFY THAT THIS RIGHT OF WAY CONTROL SURVEY WAS MADE FOR THE PURPOSE OF SURVEYING, REFERENCING, DESCRIBING AND MAPPING THE BASE LINE OF SURVEY AND PROPOSED RIGHT OF WAY LINES AS SHOWN AND DEPICTED HEREON AND THAT SAID SURVEY WAS DONE UNDER MY RESPONSIBLE CHARGE AND MEETS THE MINIMUM TECHNICAL STANDARDS SET FORTH BY THE FLORIDA BOARD OF PROFESSIONAL LAND SURVEYORS IN CHAPTER 21HH-6, FLORIDA ADMINISTRATIVE CODE, PURSUANT TO SECTION 472.027, FLORIDA STATUTES.

THIS DRAWING, CONSISTING OF SHEETS 1 OF 7 IS A TRUE, ACCURATE AND COMPLETE DEPICTION OF A FIELD SURVEY PERFORMED UNDER MY DIRECTION AND COMPLETED ON FEB. 14, 1989.

Devi S. Owen 529-07
 DEVI S. OWEN, COUNTY SURVEYOR
 PROFESSIONAL LAND SURVEYOR NO. 8928
 STATE OF FLORIDA
 1301 CATTLEMEN ROAD
 SARASOTA, FLORIDA 34232-9631

SURVEY CERTIFICATION

- BEARINGS SHOWN ARE BASED ON TAMiami TRAIL (U.S. 41 BY-PASS) RIGHT-OF-WAY MAP, RECORDED IN ROAD PLAT BOOK 1, PAGE 90E, THE WEST LINE OF SEC. 8, TWP. 39S, RNG. 19E., BEING N 00°04'00"W.
- REFERENCES: F.B. 328/14-53, C.B. 24/39, P.B. 26/45, P.B. 10/56A, P.B. 27/48, C.B. 22/46-46D, C.B. 23/15A, P.B. 12/21, P.B. 2/69, P.B. 18/22, P.B. 4/7, F.B. 328/69-70.
- ALL UNDERGROUND FACILITIES NOT LOCATED.
- TELEPHONE LINES, CABLES AND POLES ARE OWNED BY GENERAL TELEPHONE COMPANY. POWER POLES AND LINES ARE OWNED BY FLORIDA POWER AND LIGHT.

FILE FOR RECORD IN ROAD PLAT BOOK 4 AT PAGES 54-54F OF THE PUBLIC RECORDS OF SARASOTA COUNTY, FLORIDA, THIS 31ST DAY OF MAY, A.D. 2007.

KAREN E. RUSHING
 CLERK OF THE CIRCUIT COURT
 SARASOTA COUNTY, FLORIDA
 BY *Karen E. Rushing*
 DEPUTY CLERK

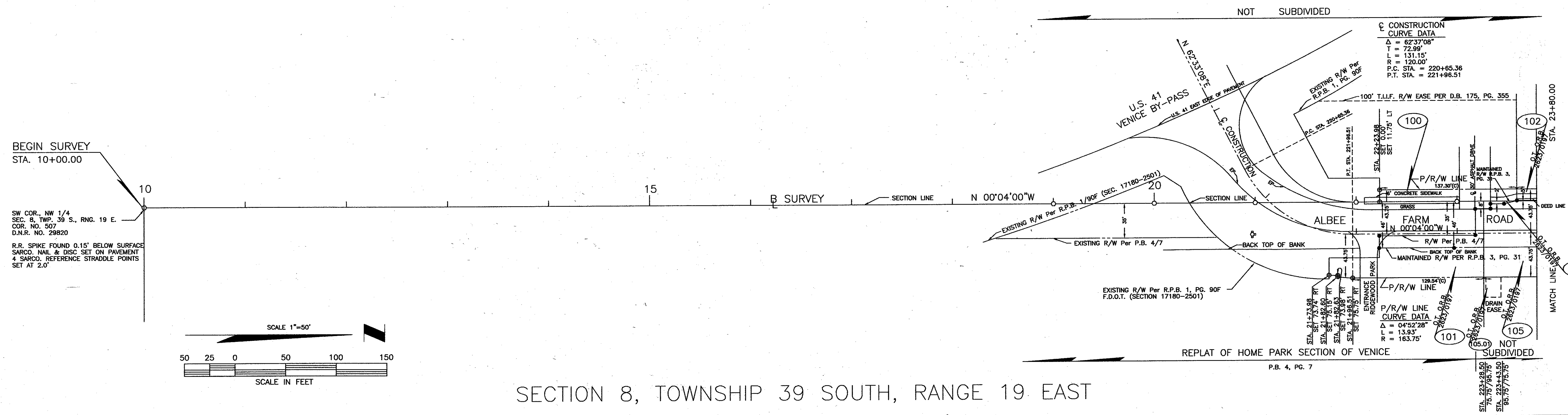
KEY MAP

SARASOTA COUNTY TRANSPORTATION DEPARTMENT ENGINEERING DIVISION - SURVEY - MAPPING SECTION			
RIGHT OF WAY MAP			
ALBEE FARM ROAD TAMiami TRAIL (U.S. 41 BY-PASS) TO LAUREL ROAD			
DRAWN	BY	DATE	<i>Devi S. Owen</i> 5-29-07 DATE <i>Devi S. Owen</i> 5-30-07 DATE
CHECKED	K. PETERS	5-27-93	
COMPARED			
REF. SEE SURVEYOR'S NOTE #2			
SCALE	PROJECT NO.	JOB NO.	SHEET 1 OF 7
1" = 400'	88052	8753	

LEGEND

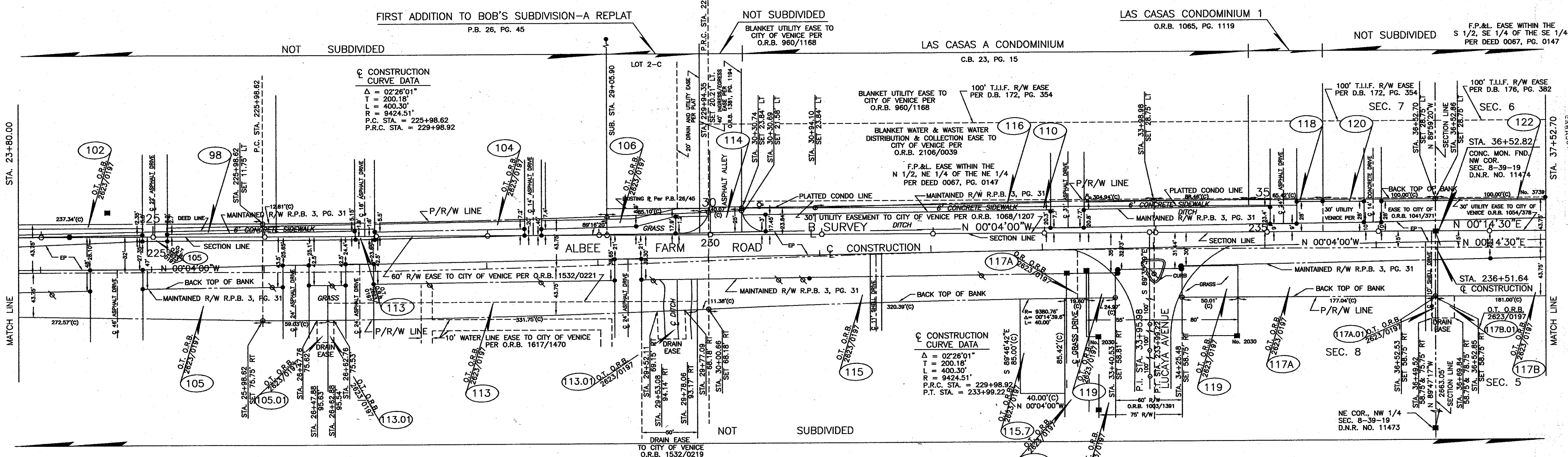
- = NAIL & DISK SET
- = NAIL & DISK FND.
- = REF NAIL & DISC
- = I.R. SET WITH RED CAP STAMPED COUNTY R/W PLS 1867
- = I.R. FND.
- = RAILROAD SPIKE FND.
- △ = HUB SET
- △ = HUB FND.
- = CONCRETE MONUMENT SET
- = CONCRETE MONUMENT FND.
- = WATER VALVE
- = UTILITY POLE
- = GUY WIRE
- T.B. = TOP OF BANK
- EP = EDGE OF PAVEMENT
- ⊙ = R/W MARKER NOT INSTALLED

SECTION 7, TOWNSHIP 39 SOUTH, RANGE 19 EAST

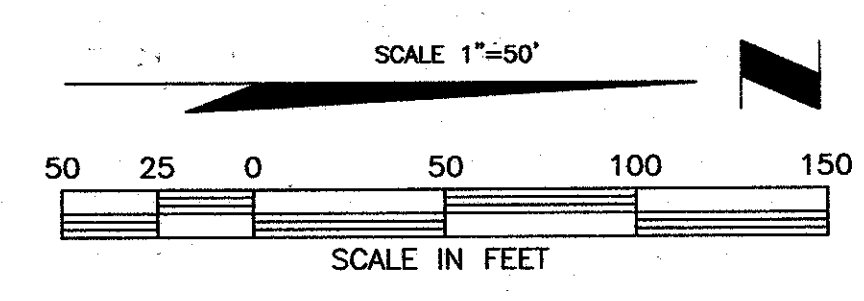


SECTION 8, TOWNSHIP 39 SOUTH, RANGE 19 EAST

SECTION 7, TOWNSHIP 39 SOUTH, RANGE 19 EAST



SECTION 8, TOWNSHIP 39 SOUTH, RANGE 19 EAST



- LEGEND**
- = NAIL & DISK SET
 - = NAIL & DISK FND.
 - = REF NAIL & DISC
 - = I.R. SET WITH RED CAP STAMPED COUNTY R/W PLS 1867
 - = I.R. FND.
 - = RAILROAD SPIKE FND.
 - △ = HUB SET
 - ▲ = HUB FND.
 - = CONCRETE MONUMENT SET
 - = CONCRETE MONUMENT FND.
 - = WATER VALVE
 - = UTILITY POLE
 - = GUY WIRE
 - = TOP OF BANK
 - = EDGE OF PAVEMENT
 - ⊕ = R/W MARKER NOT INSTALLED

SARASOTA COUNTY TRANSPORTATION DEPARTMENT
ENGINEERING DIVISION - SURVEY - MAPPING SECTION

RIGHT OF WAY MAP

ALBEE FARM ROAD
TAMIAMI TRAIL (U.S. 41 BY-PASS) TO LAUREL ROAD

DRAWN	T. OWEN	DATE	2-20-90
CHECKED			
COMPARED			

SEE SURVEYOR'S NOTE NO. 2

SCALE 1" = 50'

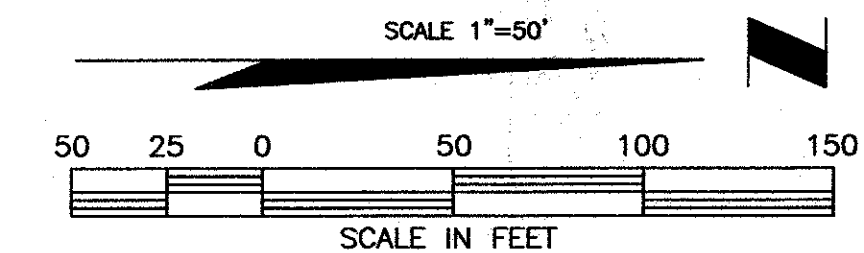
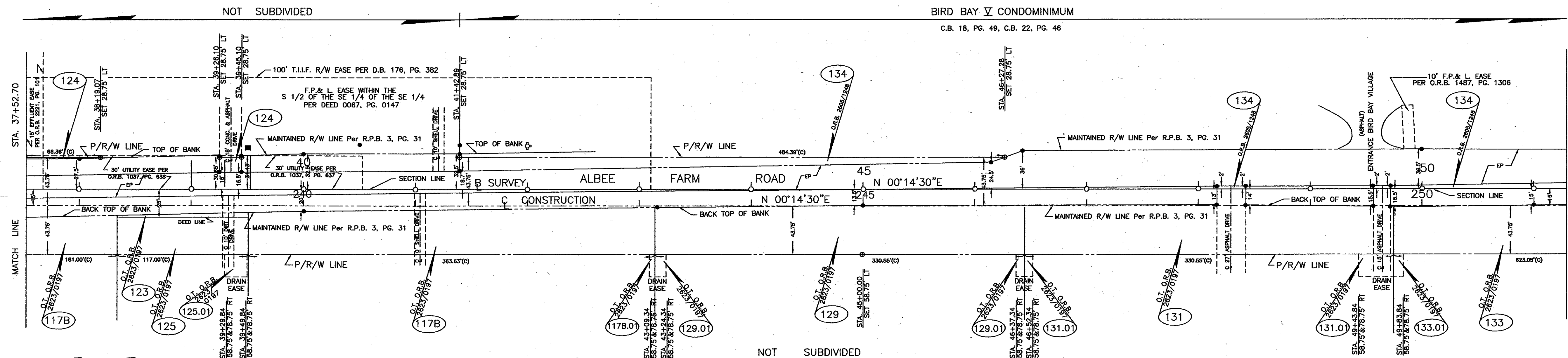
PROJECT NO. 88052

JOB NO. 8753

SHEET 2 OF 7

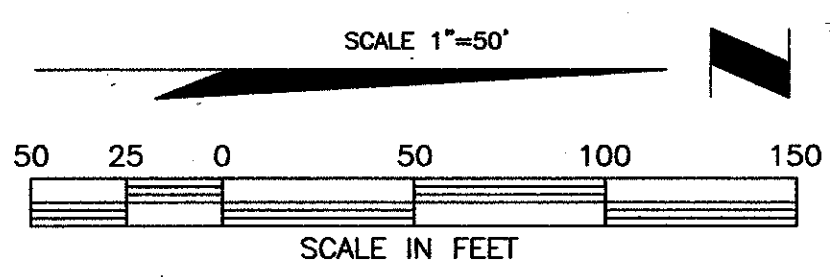
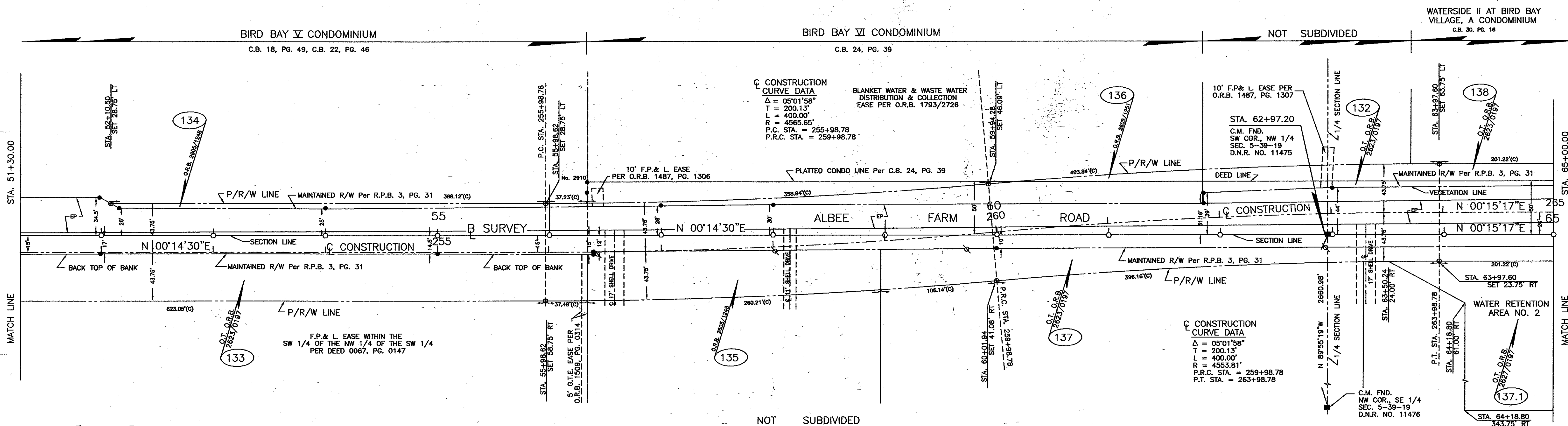
FILED FOR RECORD
JAN 31 PM 4:31
KAREN E. RICHARDS
CLERK OF COUNTY FL.

SECTION 6, TOWNSHIP 39 SOUTH, RANGE 19 EAST



SECTION 5, TOWNSHIP 39 SOUTH, RANGE 19 EAST

SECTION 6, TOWNSHIP 39 SOUTH, RANGE 19 EAST



- LEGEND**
- = NAIL & DISK SET
 - = NAIL & DISK FND.
 - ◉ = REF NAIL & DISC
 - ◌ = I.R. SET WITH RED CAP STAMPED COUNTY R/W PLS 1867
 - = I.R. FND.
 - ▲ = RAILROAD SPIKE FND.
 - △ = HUB SET
 - △ = HUB FND.
 - = CONCRETE MONUMENT SET
 - = CONCRETE MONUMENT FND.
 - ▣ = WATER VALVE
 - ⊕ = UTILITY POLE
 - ⊗ = GUY WIRE
 - T.B. = TOP OF BANK
 - EP = EDGE OF PAVEMENT
 - ⊙ = R/W MARKER NOT INSTALLED

SARASOTA COUNTY TRANSPORTATION DEPARTMENT
ENGINEERING DIVISION - SURVEY - MAPPING SECTION

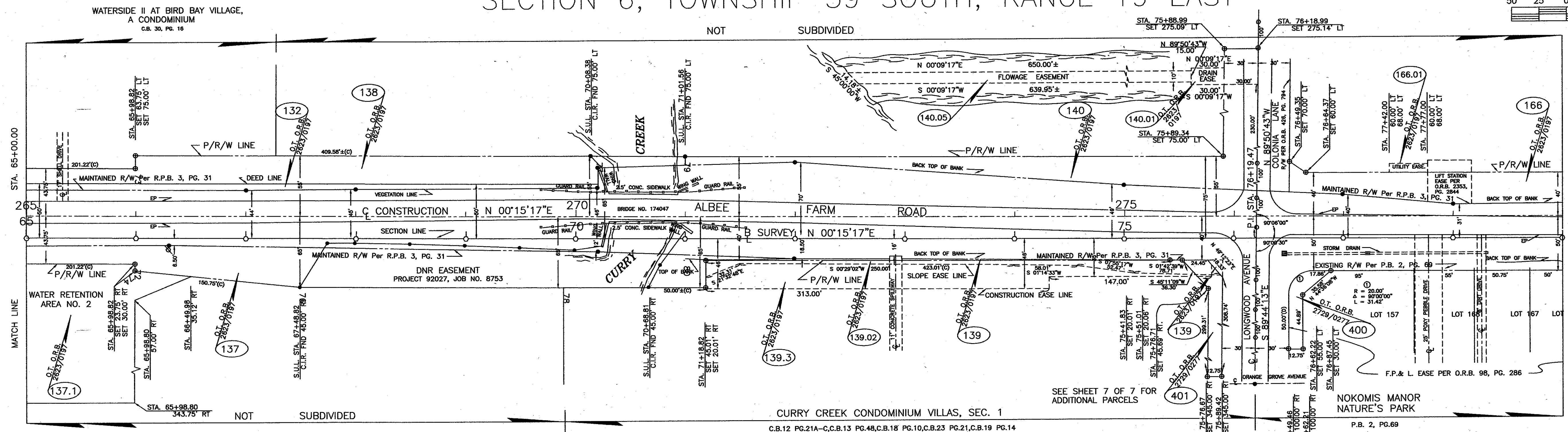
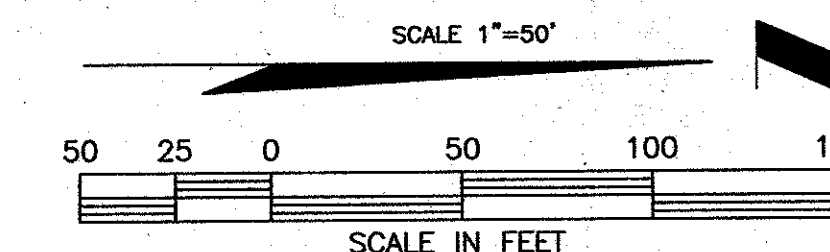
RIGHT OF WAY MAP

ALBEE FARM ROAD
TAMIAMI TRAIL (U.S. 41 BY-PASS) TO LAUREL ROAD

DRAWN	T. OWEN	DATE	2-20-90
CHECKED		DATE	5-30-07
COMPARED		DATE	
REF.	SEE SURVEYOR'S NOTE NO. 2		
SCALE	1"=50'	PROJECT NO.	88052
		JOB NO.	8753
		SHEET	3 OF 7

FILED FOR RECORD
2007 MAR 31 PM 4:37
KAREN E. RUSHING
CLERK OF CIRCUIT COURT
SARASOTA COUNTY, FL

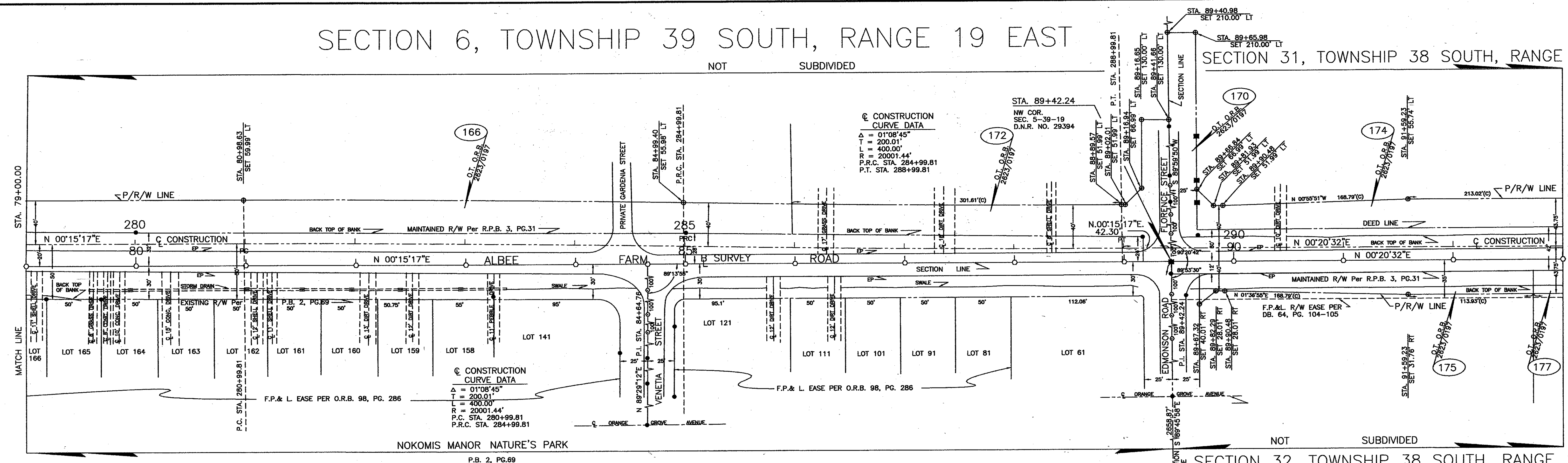
SECTION 6, TOWNSHIP 39 SOUTH, RANGE 19 EAST



SECTION 5, TOWNSHIP 39 SOUTH, RANGE 19 EAST

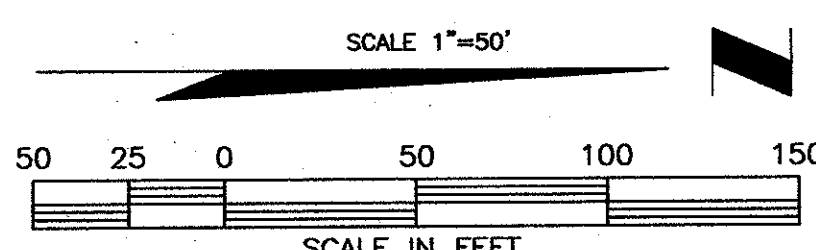
SECTION 6, TOWNSHIP 39 SOUTH, RANGE 19 EAST

SECTION 31, TOWNSHIP 38 SOUTH, RANGE 19 EAST



SECTION 5, TOWNSHIP 39 SOUTH, RANGE 19 EAST

SECTION 32, TOWNSHIP 38 SOUTH, RANGE 19 EAST



- LEGEND
- = NAIL & DISK SET
 - = NAIL & DISK FND.
 - = REF NAIL & DISC
 - = I.R. SET WITH RED CAP STAMPED
 - = COUNTY R/W PLS 1987
 - = I.R. FND.
 - = RAILROAD SPIKE FND.
 - = HUB SET
 - = HUB FND.
 - = CONCRETE MONUMENT SET
 - = CONCRETE MONUMENT FND.
 - = WATER VALVE
 - = UTILITY POLE
 - = GUY WIRE
 - = TOP OF BANK
 - = EDGE OF PAVEMENT
 - = R/W MARKER NOT INSTALLED

SARASOTA COUNTY TRANSPORTATION DEPARTMENT
ENGINEERING DIVISION - SURVEY - MAPPING SECTION

RIGHT OF WAY MAP

ALBEE FARM ROAD
TAMIAMI TRAIL (U.S. 41 BY-PASS) TO LAUREL ROAD

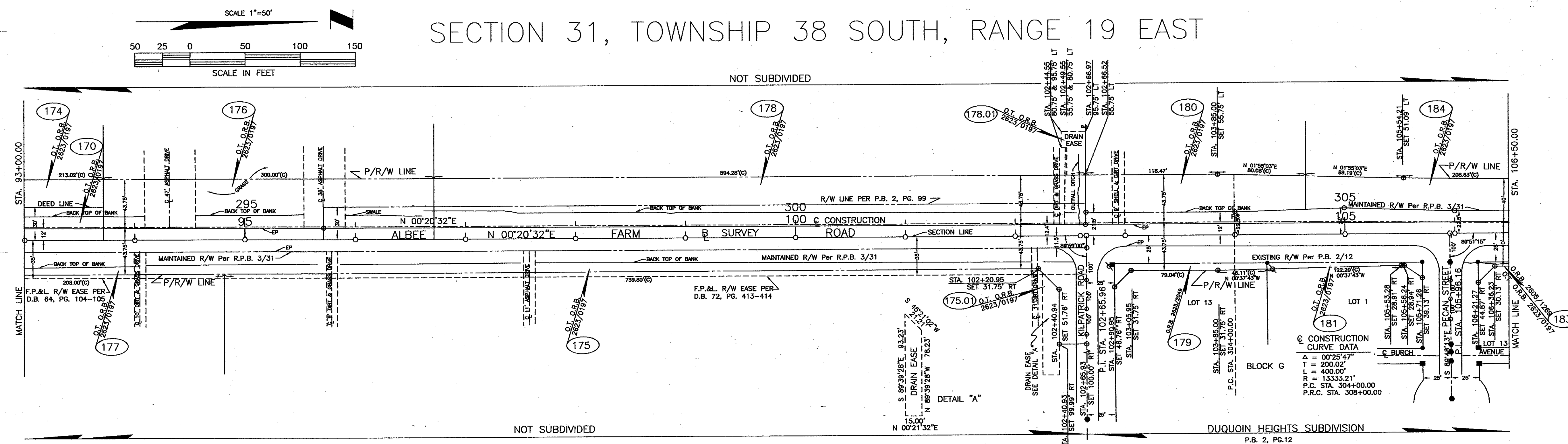
BY	DATE
K. PETERS	5-24-93
CHECKED	
COMPILED	
REF.	SEE SURVEYOR'S NOTE NO. 2

SCALE 1" = 50' PROJECT NO. 88052 JOB NO. 8753 SHEET 4 OF 7

REVISIONS: 4-13-95

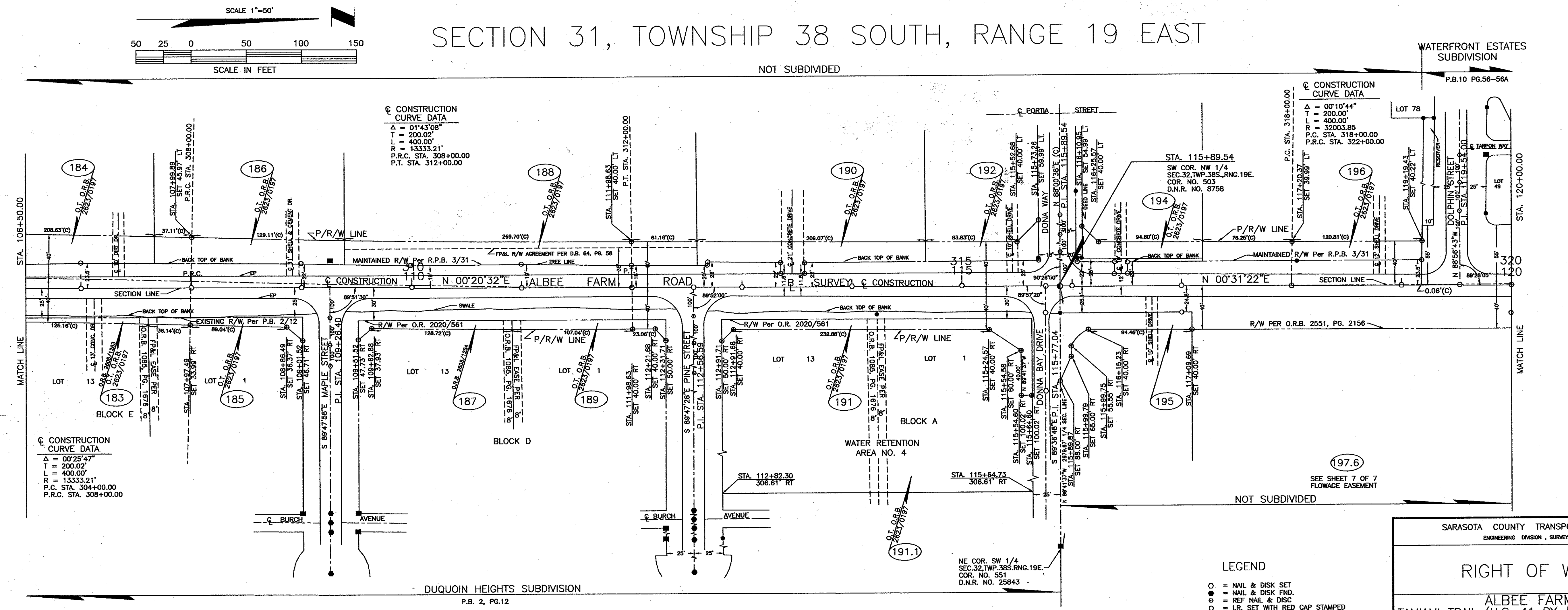
FILED FOR RECORD
2007 MAY 31 PM 4:37
KAREN E. RUSHING
CLERK OF CIRCUIT COURT
SARASOTA COUNTY, FLA.

SECTION 31, TOWNSHIP 38 SOUTH, RANGE 19 EAST



SECTION 32, TOWNSHIP 38 SOUTH, RANGE 19 EAST

SECTION 31, TOWNSHIP 38 SOUTH, RANGE 19 EAST



SECTION 32, TOWNSHIP 38 SOUTH, RANGE 19 EAST

- LEGEND**
- = NAIL & DISK SET
 - = NAIL & DISK FND.
 - = REF NAIL & DISC
 - = I.R. SET WITH RED CAP STAMPED COUNTY R/W PLS 1867
 - = I.R. FND.
 - ▲ = RAILROAD SPIKE FND.
 - = HUB SET
 - ▲ = HUB FND.
 - = CONCRETE MONUMENT SET
 - = CONCRETE MONUMENT FND.
 - = WATER VALVE
 - = UTILITY POLE
 - = GUY WIRE
 - T.B. = TOP OF BANK
 - EP = EDGE OF PAVEMENT
 - ⊕ = R/W MARKER NOT INSTALLED

SARASOTA COUNTY TRANSPORTATION DEPARTMENT
ENGINEERING DIVISION - SURVEY - MAPPING SECTION

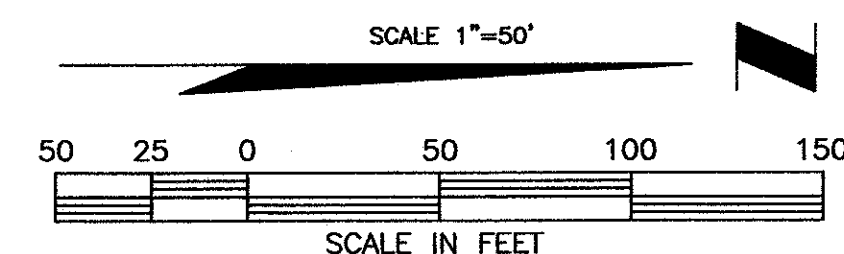
RIGHT OF WAY MAP

ALBEE FARM ROAD
TAMIAMI TRAIL (U.S. 41 BY-PASS) TO LAUREL ROAD

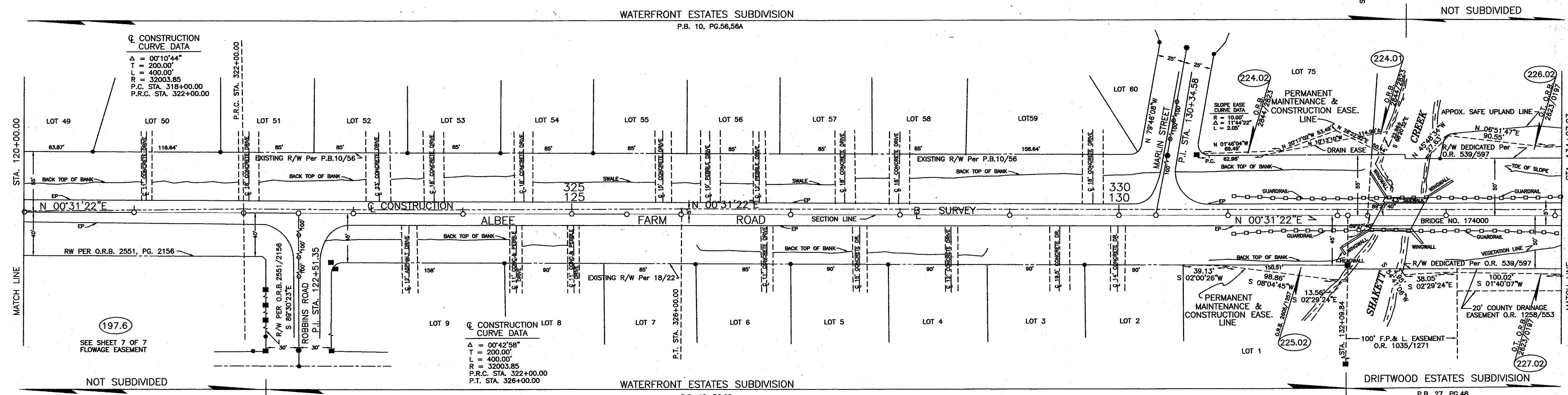
DRAWN	K. PETERS	DATE	5-25-93
CHECKED			
COMPARED			
REF.	SEE SURVEYOR'S NOTE NO. 2		
SCALE	1" = 50'	PROJECT NO.	88052
		JOB NO.	8753
		SHEET	5 OF 7

Jeri S. Owens 5-29-07
5-30-07

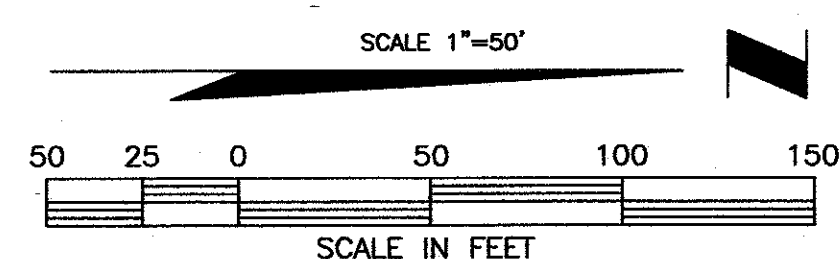
FILED FOR RECORD
2007 MAR 31 PM 4:37
KAREN E. RUSHING
REGISTERED PROFESSIONAL
SURVEYOR
FLORIDA COUNTY LEVEL



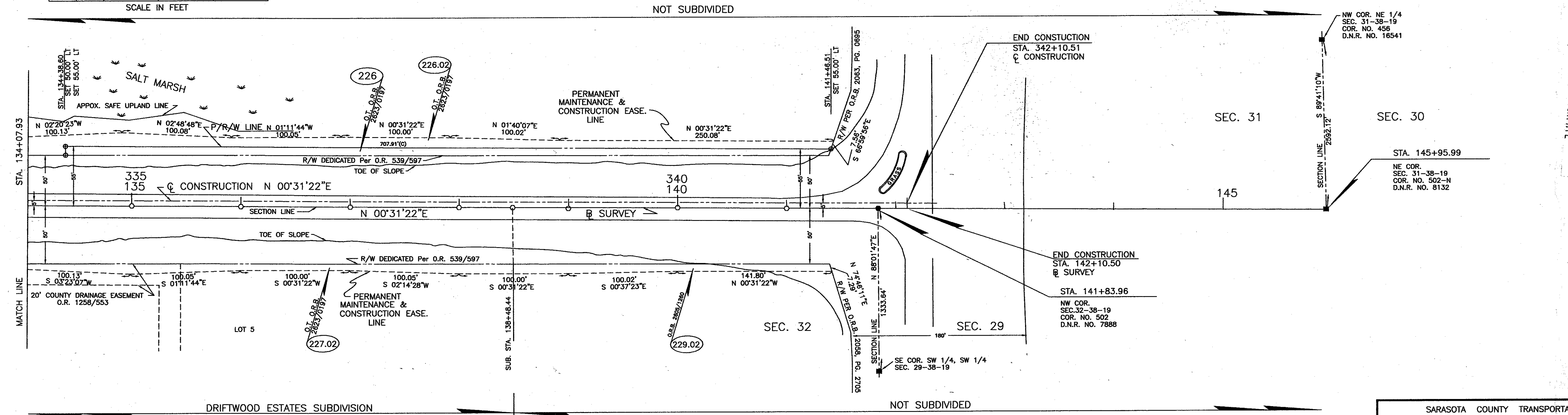
SECTION 31, TOWNSHIP 38 SOUTH, RANGE 19 EAST



SECTION 32, TOWNSHIP 38 SOUTH, RANGE 19 EAST



SECTION 31, TOWNSHIP 38 SOUTH, RANGE 19 EAST



SECTION 32, TOWNSHIP 38 SOUTH, RANGE 19 EAST

- LEGEND
- = NAIL & DISK SET
 - = NAIL & DISK FND.
 - ⊙ = REF NAIL & DISC
 - = I.R. SET WITH RED CAP STAMPED COUNTY R/W PLS 1867
 - = I.R. FND.
 - ⊙ = RAILROAD SPIKE FND.
 - ⊙ = HUB SET
 - ⊙ = HUB FND.
 - ⊙ = CONCRETE MONUMENT SET
 - ⊙ = CONCRETE MONUMENT FND.
 - ⊙ = WATER VALVE
 - ⊙ = UTILITY POLE
 - ⊙ = GUY WIRE
 - T.B. = TOP OF BANK
 - EP = EDGE OF PAVEMENT
 - ⊙ = R/W MARKER NOT INSTALLED

SARASOTA COUNTY TRANSPORTATION DEPARTMENT
ENGINEERING DIVISION, SURVEY - MAPPING SECTION

RIGHT OF WAY MAP

ALBEE FARM ROAD
TAMIAMI TRAIL (U.S. 41 BY-PASS) TO LAUREL ROAD

DRAWN	BY	DATE	
CHECKED	K. PETERS	5-25-93	
COMPARED			
REF.	SEE SURVEYOR'S NOTE NO. 2		
SCALE	1" = 50'	PROJECT NO.	88052
		JOB NO.	8753
		SHEET	6 OF 7

FILED FOR RECORD
2007 MAY 31 PM 4:37
KAREN E. RUSHING
TAMARA A. RICHMOND
SARASOTA COUNTY

