

LYONS BAY UNIT #1
 Filed Oct. 28, 1957
 PB 10 Page 45
 Sarasota County Records
 (Note - No Dedicated R/W
 For S.R. 789 on Plat)

LYONS BAY UNIT #2
 Filed Feb. 13, 1961
 PB 14 Page 1
 Sarasota County Records

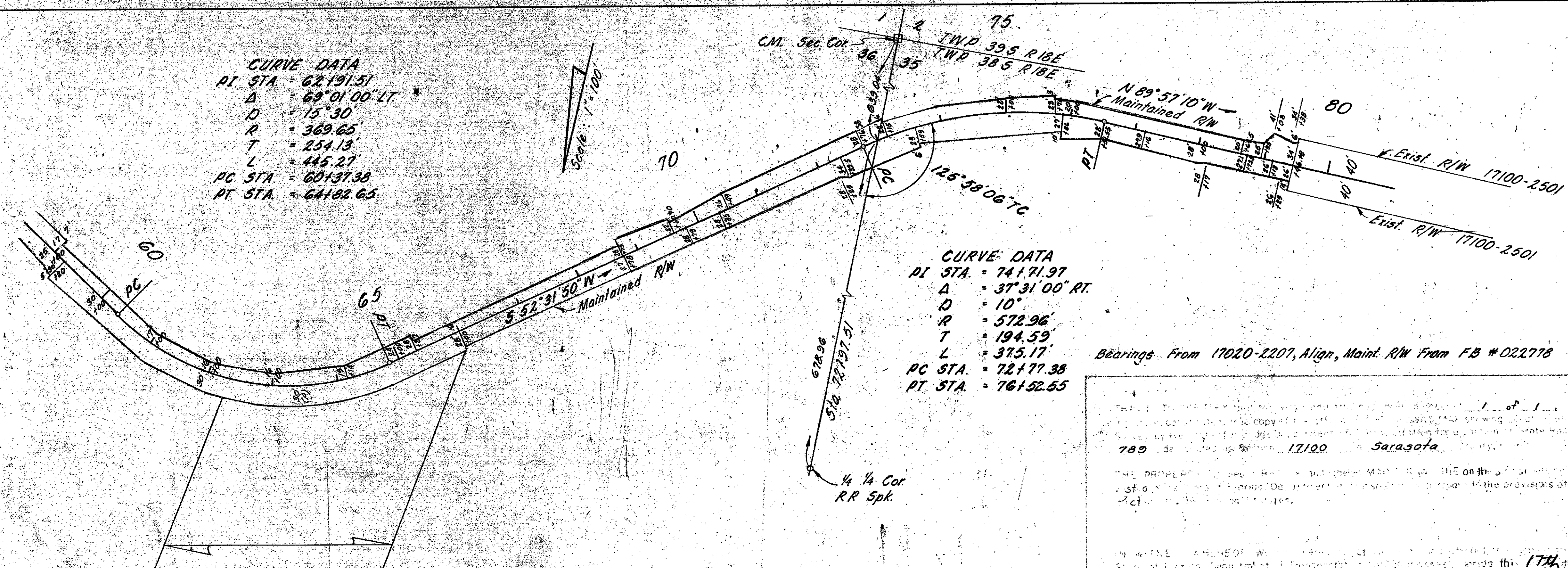
WATERSIDE ACRES
 Filed April 3, 1959
 PB 11 Page 4
 Sarasota County Records

CURVE DATA
 PI STA. = 51+11.96
 Δ = 30° 48' 00" RT
 D = 8'
 R = 716.20'
 T = 197.27
 L = 385.00'
 PC STA. = 49+14.69
 PT STA. = 52+19.69

EQUATION
 Exist R/W 17020-2207
 105+16.15 BK (17020-2207) =
 105+100.00 Ahd. (17020-2207) =
 30+100.00 & ALBEE RD.

CURVE DATA
 PI STA. = 62+191.51
 Δ = 69° 01' 00" LT
 D = 15' 30"
 R = 369.65'
 T = 254.13
 L = 445.27
 PC STA. = 60+31.38
 PT STA. = 64+82.65

CURVE DATA
 PI STA. = 74+71.97
 Δ = 37° 31' 00" RT
 D = 10'
 R = 572.96'
 T = 194.59
 L = 375.17
 PC STA. = 72+77.38
 PT STA. = 76+52.55



NOKOMIS GARDENS
 Filed Feb. 12, 1957
 PB 9 Page 91
 Sarasota County Records

Bearings From 17020-2207, Align, Maint. R/W From FB #022778

" This right-of-way map when recorded is an instrument of title conveyance, transferring in accordance with Florida Statutes 337.29 (1977) all right, title, and interest of the Florida Department of Transportation in the road, street, highway, set forth on this map to

Sarasota County,
 Recorded in Public Records of Sarasota County, Florida, this 15th day of July, A. D. 1981 in Road Plat Book 2, Pages 23
 by: *Sheila M. Minkley*, Clerk of Circuit Court,
 Sarasota County, Florida

IN WITNESS WHEREOF, I have hereunto set my hand and the seal of the Department of Transportation at Tallahassee, Florida, this 17th day of April, A. D. 1979.

W. A. Rose
 SECRETARY OF TRANSPORTATION

Caroly Scanlon
 EXECUTIVE SECRETARY

DEPARTMENT OF TRANSPORTATION			
MAINTAINED			
RIGHT OF WAY MAP			
STATE ROAD NO. 789		SARASOTA COUNTY	
DATE	BY	DATE	BY
3-28-79	LR5	3-29-79	C. T. Monte
3-28-79	LR5	3-28-79	J. Shaw
3-27-79	J. Shaw	3-27-79	J. E. Madel
INDEXED		INDEXED	
SECTION 17100-		Sh. 1 of 1	