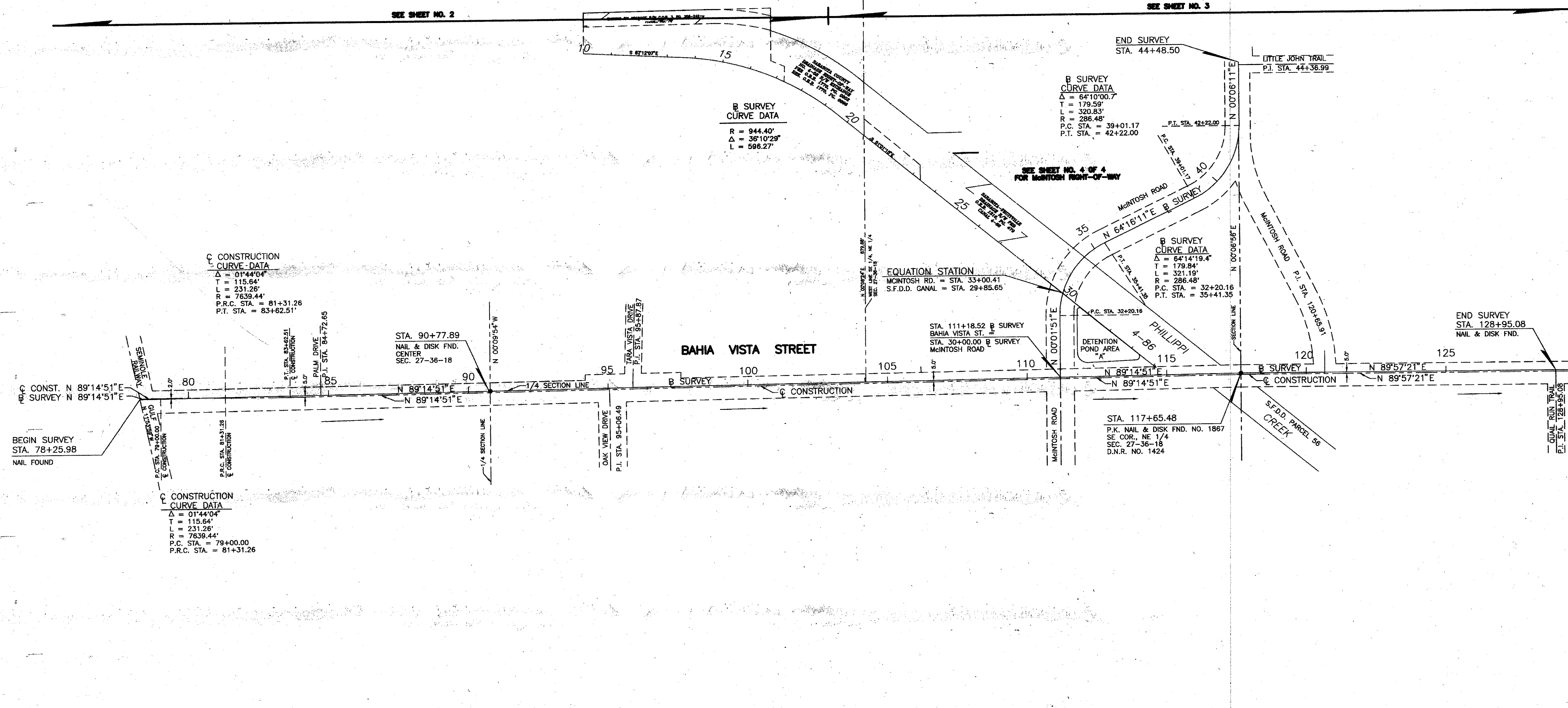


SECTION 27, TOWNSHIP 36 SOUTH, RANGE 18 EAST

SECTION 26, TOWNSHIP 36 SOUTH, RANGE 18 EAST



FILED FOR RECORD
 2006 FEB 27 PM 4:06
 KAREN E. RUSHING
 CLERK OF CIRCUIT COURT
 SARASOTA COUNTY, FL

- LEGEND OF ABBREVIATIONS**
- B = BASELINE
 - B.M. = BENCH MARK
 - B.T.O.B. = BACK TOP OF BANK
 - C.B. = CONDOMINIUM BOOK
 - C.C.C.L. = COASTAL CONSTRUCTION CONTROL LINE
 - CH = CHORD
 - CH.P. = CHAPTER
 - CH. BRG. = CHORD BEARING
 - C = CENTERLINE
 - C.M. = CONCRETE MONUMENT
 - C.M.P. = CORRUGATED METAL PIPE
 - CO. = COUNTY
 - CONDO. = CONDOMINIUM
 - CONST. = CONSTRUCTION
 - COR. = CORNER
 - D.B. = DEED BOOK
 - D.D. = DATA DRAWER
 - D.N.R. = DEPARTMENT OF NATURAL RESOURCES
 - D.O.T. = DEPARTMENT OF TRANSPORTATION
 - DRAIN. = DRAINAGE
 - EASE. = EASEMENT
 - F.A.C. = FLORIDA ADMINISTRATIVE CODE
 - F.B. = FIELD BOOK
 - F.D.O.T. = FLORIDA DEPARTMENT OF TRANSPORTATION
 - FND. = FOUND
 - F.P. & L. = FLORIDA POWER AND LIGHT
 - G.T.E. = GENERAL TELEPHONE
 - I.P. = IRON PIPE
 - I.R. = IRON ROD
 - L = LENGTH
 - M.H.W.L. = MEAN HIGH WATER LINE
 - MON. = MONUMENT
 - M/R/W = MAINTAINED RIGHT-OF-WAY
 - N. & D. = NAIL AND DISC
 - N.G.V.D. = NATIONAL GEODETIC VERTICAL DATUM
 - N.O.S. = NATIONAL OCEAN SERVICE
 - O.A. = OVER ALL
 - O/E = OVERHEAD ELECTRIC
 - O.R.B. = OFFICIAL RECORDS BOOK
 - O.T. = ORDER OF TAKING
 - P.B. = PLAT BOOK
 - P.C. = POINT OF CURVATURE
 - P.C.P. = PERMANENT CONTROL POINT
 - P.I. = POINT OF INTERSECTION
 - P.L. = PROPERTY LINE
 - P.L.S. = PROFESSIONAL LAND SURVEYOR
 - P.R.C. = POINT OF REVERSE CURVE
 - P.R.M. = PERMANENT REFERENCE MONUMENT
 - P.T. = POINT OF TANGENCY
 - R = RADIUS
 - R.C.P. = REINFORCED CONCRETE PIPE
 - REF. = REFERENCE
 - RESUB. = RESUBDIVISION
 - RNG. = RANGE
 - R.P.B. = ROAD PLAT BOOK
 - R.R. = RAILROAD
 - R/W = RIGHT-OF-WAY
 - SEC. = SECTION
 - S.F.D.D. = SARASOTA-FRUITVILLE DRAINAGE DISTRICT
 - S.R. = STATE ROAD
 - STA. = STATION
 - SUB. = SUBDIVISION
 - T. = TANGENT
 - T.I.I.F. = TRUSTEES OF THE INTERNAL IMPROVEMENT FUND
 - TWP. = TOWNSHIP
 - U/E = UNDERGROUND ELECTRIC
 - VEG. = VEGETATION

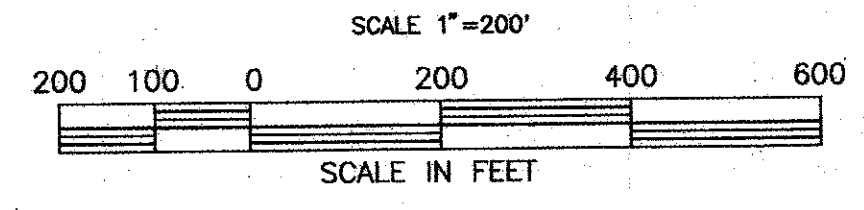
FILE FOR RECORD IN ROAD PLAT BOOK 4 AT PAGES 45-45D OF THE PUBLIC RECORDS OF SARASOTA COUNTY, FLORIDA, THIS 27th DAY OF FEB, A.D. 2006

KAREN E. RUSHING
 CLERK OF THE CIRCUIT COURT
 SARASOTA COUNTY, FLORIDA

By: *Frank Hyman*
 DEPUTY CLERK

SURVEYOR'S NOTES

- BEARINGS SHOWN ARE BASED ON THE BAHIA VISTA STREET MAINTAINED RIGHT-OF-WAY MAP FROM BENEVA ROAD TO SEABOARD COASTLINE RAILROAD FILED IN ROAD PLAT BOOK 1, PAGE 13 OF THE PUBLIC RECORDS OF SARASOTA COUNTY, FLORIDA, BEARING BEING N 89°14'51"E.
 - TELEPHONE LINES, CABLES, AND POLES OWNED BY GENERAL TELEPHONE COMPANY.
 - POWER POLES AND LINES OWNED BY FLORIDA POWER AND LIGHT COMPANY.
- ① = R/W MARKER INSTALLED WITH ROAD CONSTRUCTION PROJECT, NO. 5 REBAR WITH 2" ALUMINUM DISK STAMPED R/W PLS 1551.



SURVEYOR'S CERTIFICATE

I HEREBY CERTIFY THAT THIS R/W MAP (SHEETS 1-4) REPRESENTS A SPECIFIC PURPOSE SURVEY OF THE ROAD AS SHOWN, THAT THE SURVEY WAS RECENTLY PERFORMED UNDER MY DIRECTION, AND THAT IT IS TRUE AND CORRECT TO THE BEST OF MY KNOWLEDGE AND BELIEF, AND THAT IT MEETS THE MINIMUM TECHNICAL STANDARDS FOR LAND SURVEYING IN THE STATE OF FLORIDA (CH. 21 HH-6, F.A.C.)

DATE OF SURVEY 12-12-86

Earl K. Richardson 1-27-91
 EARL K. RICHARDSON
 PROFESSIONAL LAND SURVEYOR NO. 1867
 STATE OF FLORIDA
 1301 CATTLEMEN ROAD
 SARASOTA, FLORIDA 34232-9631

SURVEYOR'S MONUMENTATION CERTIFICATE

I HEREBY CERTIFY THAT THE RIGHT-OF-WAY AND LAND CORNER MONUMENTS AND MARKERS, AS SHOWN ON THIS MAP, (SEMINOLE GULF RAILWAY TO QUAIL RUN) WERE INSTALLED UNDER MY DIRECTION, THAT THEY ARE IN THE TRUE AND CORRECT LOCATION TO THE BEST OF MY KNOWLEDGE AND BELIEF AND THAT THEY MEET THE MINIMUM TECHNICAL STANDARDS IN THE STATE OF FLORIDA (CH. 21 HH-6, F.A.C.)

Earl K. Richardson 12-6-93
 EARL K. RICHARDSON
 PROFESSIONAL LAND SURVEYOR NO. 1551
 APAC - FLORIDA INC.
 1451 MYRTLE STREET
 SARASOTA, FL 34234

KEY MAP

SARASOTA COUNTY TRANSPORTATION DEPARTMENT
 ENGINEERING DIVISION - SURVEY - MAPPING SECTION

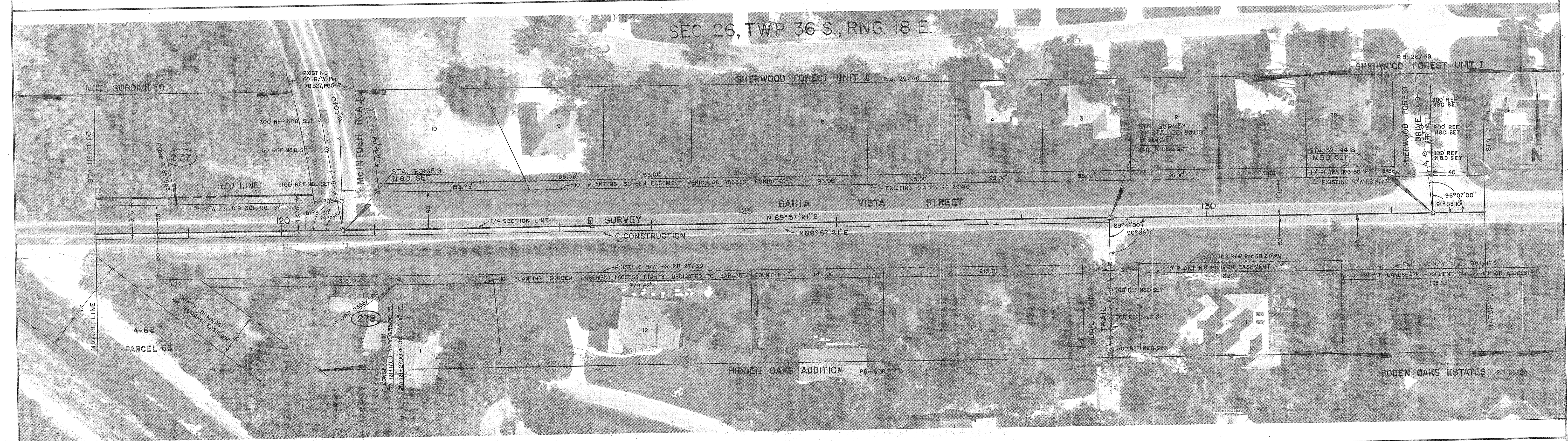
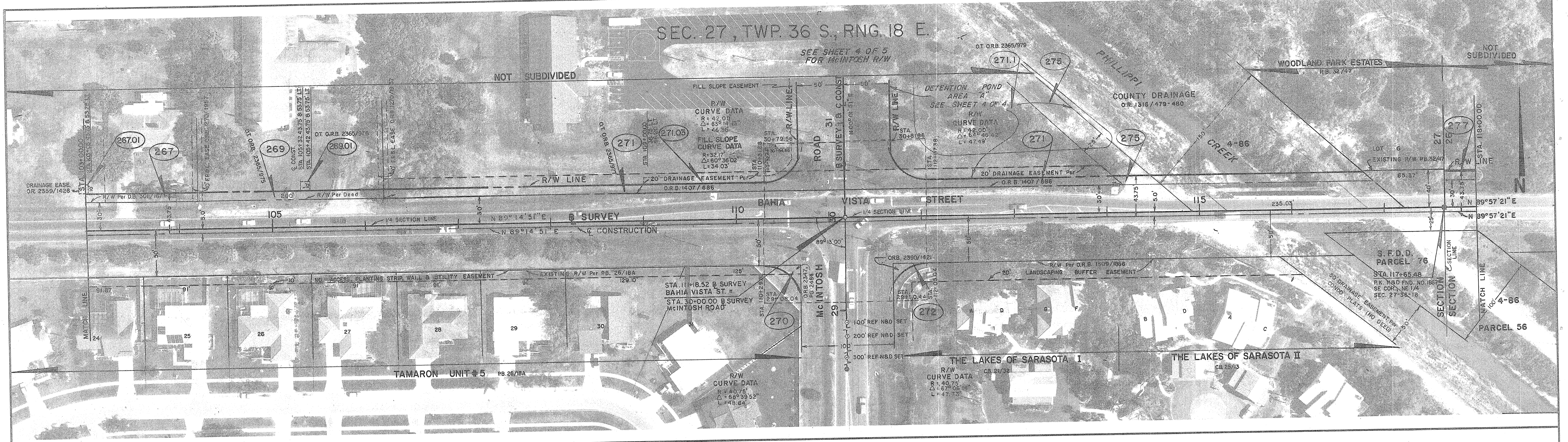
RIGHT OF WAY MAP

BAHIA VISTA STREET
 SEMINOLE GULF RAILWAY TO QUAIL RUN

BY	DATE	BY	DATE
T. OWEN	6-26-90	<i>Earl K. Richardson</i>	1-27-91
CHECKED	DATE	CHECKED	DATE
W.K.W.	5-19-99	<i>Earl K. Richardson</i>	8-25-99
COMPARED	DATE	COMPARED	DATE
PEL	5-26-99		

REF. F.B. 310, PG. 23-36

SCALE 1" = 200' PROJECT NO. 8643 SHEET 1 OF 5



- LEGEND
- = NAIL & DISK SET
 - = NAIL & DISK FND.
 - ⊙ = REF NAIL & DISC
 - ⊖ = I.R. SET WITH RED CAP STAMPED COUNTY R/W PLS 1867
 - ⊙ = I.R. FND.
 - ⊙ = RAILROAD SPIKE FND.
 - △ = HUB SET
 - ▲ = HUB FND.
 - = CONCRETE MONUMENT SET
 - ⊙ = WATER VALVE
 - ⊙ = UTILITY POLE
 - ⊙ = G.T. & T.V. CABLE BOX
 - ⊙ = MANHOLE
 - ⊙ = LIGHT POLE
 - ⊙ = FIRE HYDRANT
 - ⊙ = R/W MARKER INSTALLED (SEE SURVEYOR'S NOTES)

SARASOTA COUNTY TRANSPORTATION DEPARTMENT
ENGINEERING DIVISION, CADASTRAL SECTION

RIGHT OF WAY MAP

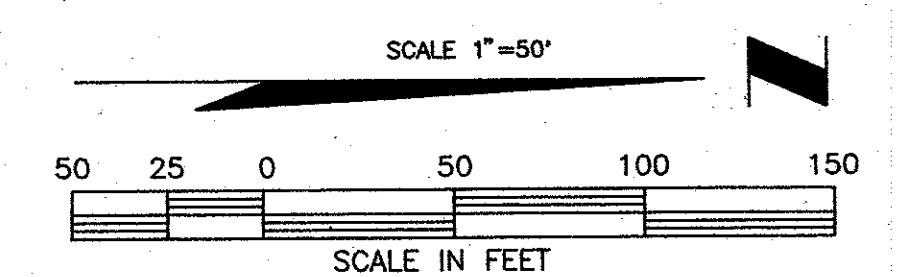
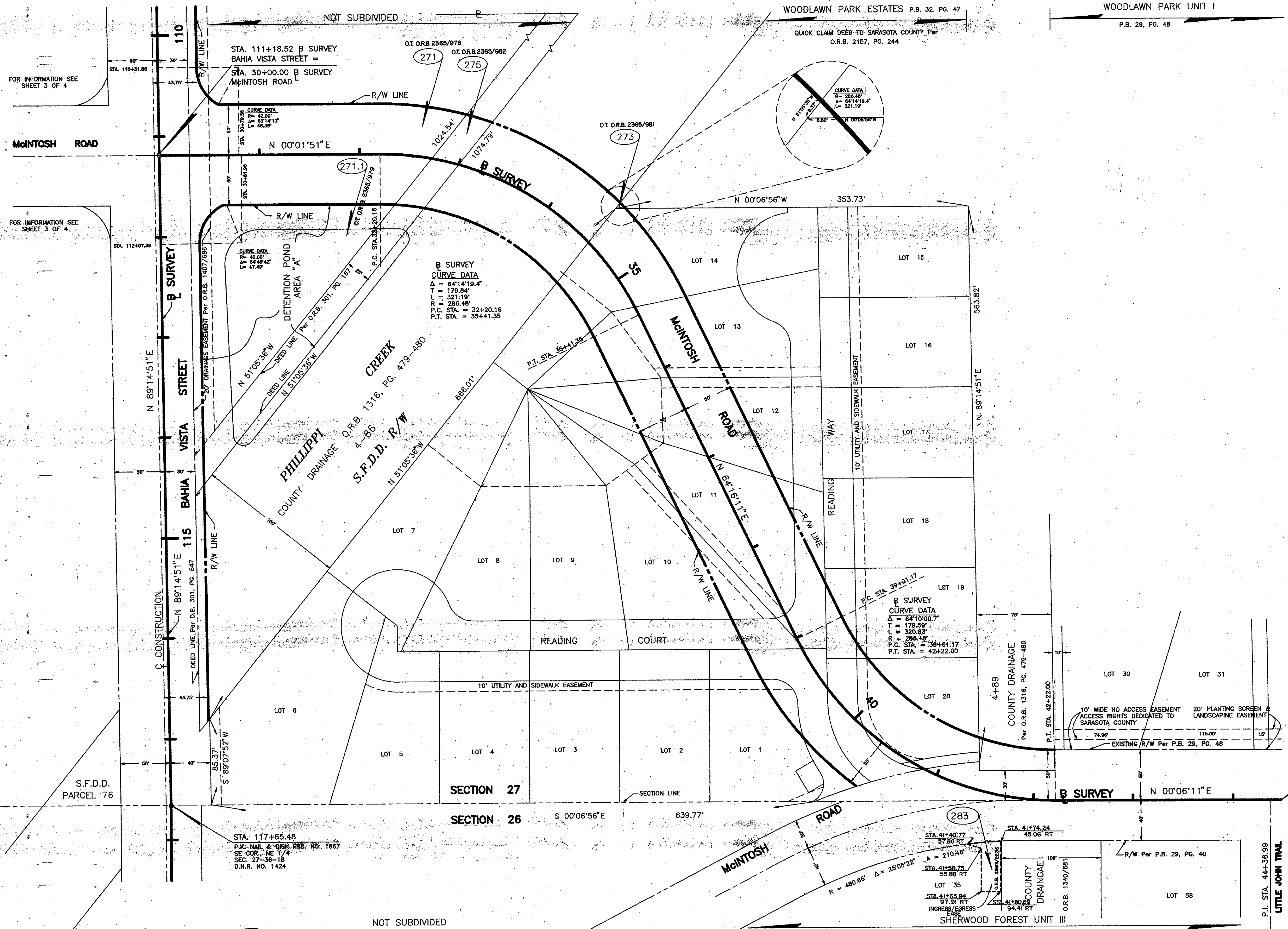
BAHIA VISTA STREET
SEABOARD COASTLINE R.R. TO QUAIL RUN TRAIL

	BY	DATE	
DRAWN	C.A.R./T.S.O.	6-26-90	<i>[Signature]</i> SURVEY DATE
CHECKED	<i>[Signature]</i>	6-19-99	<i>[Signature]</i> DATE
COMPARED	<i>[Signature]</i>	5-26-99	RIGHT OF WAY DATE

REF. F.B.: 310, PG. 23-36

SCALE 1"=50' PROJECT NO. 8643 SHEET 3 OF 5

TOWNSHIP 36 SOUTH, RANGE 18 EAST

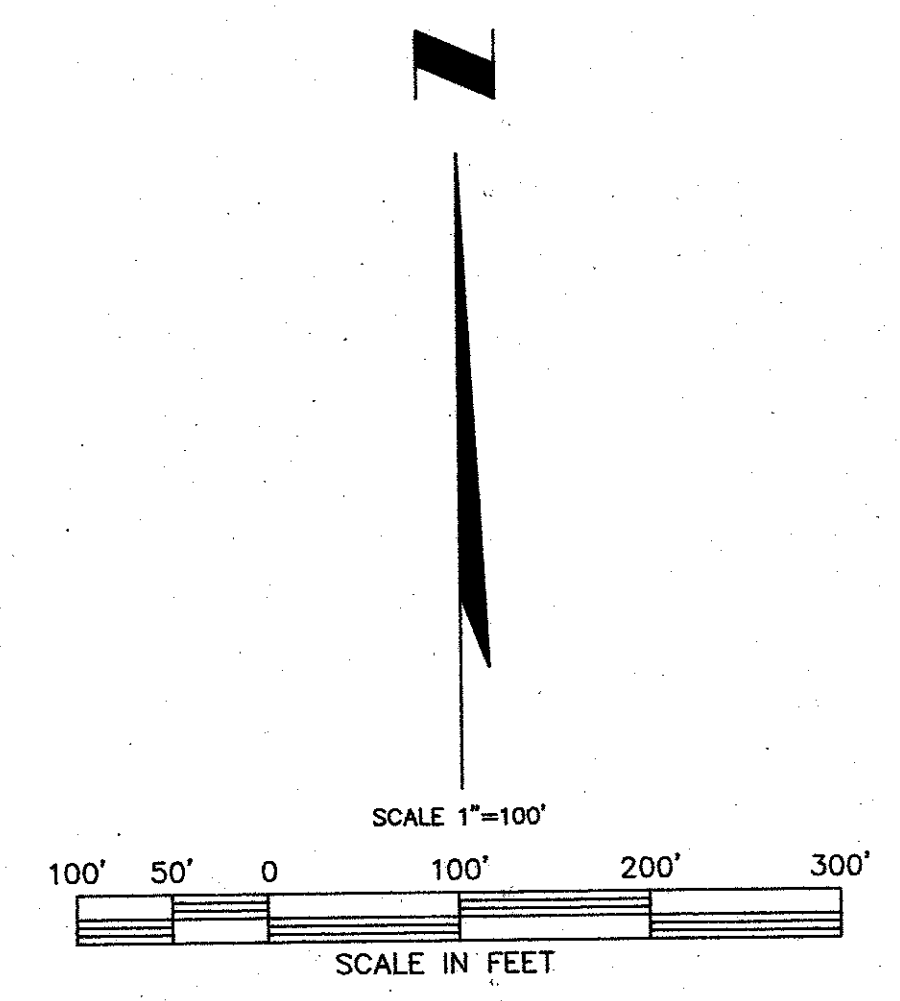
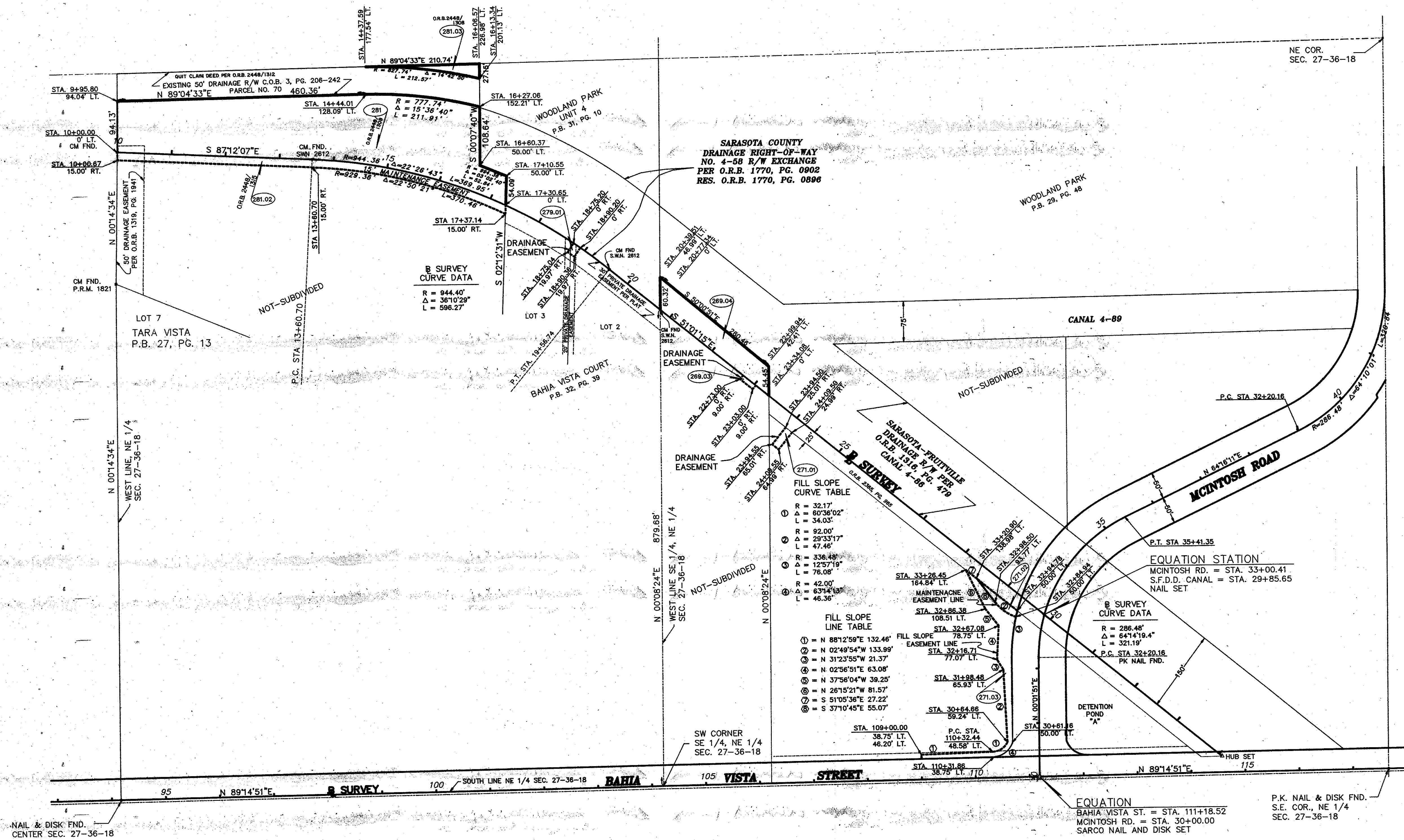


- LEGEND**
- = NAIL & DISK SET
 - = NAIL & DISK FND.
 - ⊙ = REF. NAIL & DISC
 - = I.R. SET WITH RED CAP STAMPED
 - = COUNTY R/W PLS 1867
 - = I.R. FND.
 - = RAILROAD SPIKE FND.
 - = HUB SET
 - = HUB FND.
 - = CONCRETE MONUMENT SET
 - = CONCRETE MONUMENT FND.
 - = WATER VALVE
 - = UTILITY POLE
 - = G.T. & T.V. CABLE BOX
 - = MANHOLE
 - = LIGHT POLE
 - = FIRE HYDRANT
 - = GUY WIRE
 - = TOP OF BANK
 - = EDGE OF PAVEMENT
 - = OAK TREE
 - = PINE TREE
 - = PALM TREE
 - = R/W MARKER INSTALLED (SEE SURVEYOR'S NOTES)

END SURVEY
 STA. 128+95.08
 NAIL & DISK FND.

SARASOTA COUNTY TRANSPORTATION DEPARTMENT			
ENGINEERING DIVISION - SURVEY - MAPPING SECTION			
RIGHT OF WAY MAP			
BAHIA VISTA STREET SEMINOLE COASTLINE RAILWAY TO QUAIL RUN TRAIL			
BY	DATE		
T. OWEN	6-26-90		
CHECKED	WFW	5-19-99	DATE: 8-25-97
COMPARED	BEL	5-26-99	DATE:
REF. F.B. 310, PG. 23-36			
SCALE	1" = 50'	PROJECT NO.	8643
			SHEET 4 of 5

SECTION 27, TWP. 36 S., RNG. 18 E.



FILL SLOPE CURVE TABLE

①	R = 32.17'
②	Δ = 60°36'02"
③	L = 34.03'
④	R = 92.00'
⑤	Δ = 29°33'17"
⑥	L = 47.46'
⑦	R = 338.48'
⑧	Δ = 125°7'19"
⑨	L = 76.08'
⑩	R = 42.00'
⑪	Δ = 63°14'13"
⑫	L = 46.36'

FILL SLOPE LINE TABLE

①	= N 88°12'59"E 132.46'
②	= N 02°49'54"W 133.99'
③	= N 31°23'55"W 21.37'
④	= N 02°56'51"E 63.08'
⑤	= N 37°56'04"W 39.25'
⑥	= N 26°15'21"W 81.57'
⑦	= S 51°05'36"E 27.22'
⑧	= S 37°10'45"E 55.07'

- LEGEND**
- ⊗ = NAIL SET
 - = NAIL FND.
 - = NAIL & DISK SET
 - = NAIL & DISK FND.
 - = REF NAIL & DISC
 - = I.R. SET WITH RED CAP STAMPED COUNTY R/W PLS 1867
 - = I.R. FND.
 - = RAILROAD SPIKE FND.
 - = HUB SET
 - = HUB FND.
 - = CONCRETE MONUMENT SET
 - = CONCRETE MONUMENT FND.
 - = WATER VALVE
 - = UTILITY POLE
 - = G.T. & T.V. CABLE BOX
 - = MANHOLE
 - = LIGHT POLE
 - = FIRE HYDRANT
 - = GUY WIRE
 - = TOP OF BANK
 - = EDGE OF PAVEMENT
 - = OAK TREE
 - = PINE TREE
 - = PALM TREE
 - = R/W MARKER INSTALLED (SEE SURVEYOR'S NOTES)

SARASOTA COUNTY TRANSPORTATION DEPARTMENT
ENGINEERING DIVISION - SURVEY - MAPPING SECTION

RIGHT OF WAY MAP

BAHIA VISTA STREET
SEMINOLE COASTLINE RAILWAY TO QUAIL RUN TRAIL

BY	DATE	SURV	DATE
K.PETERS	8-4-92		
CHECKED	5-19-99		
COMPARED	5-26-99		
REF.	F.B. 342, PG. 1-9		
SCALE	PROJECT NO.	SHEET	
1"=100'	8643	5 of 5	