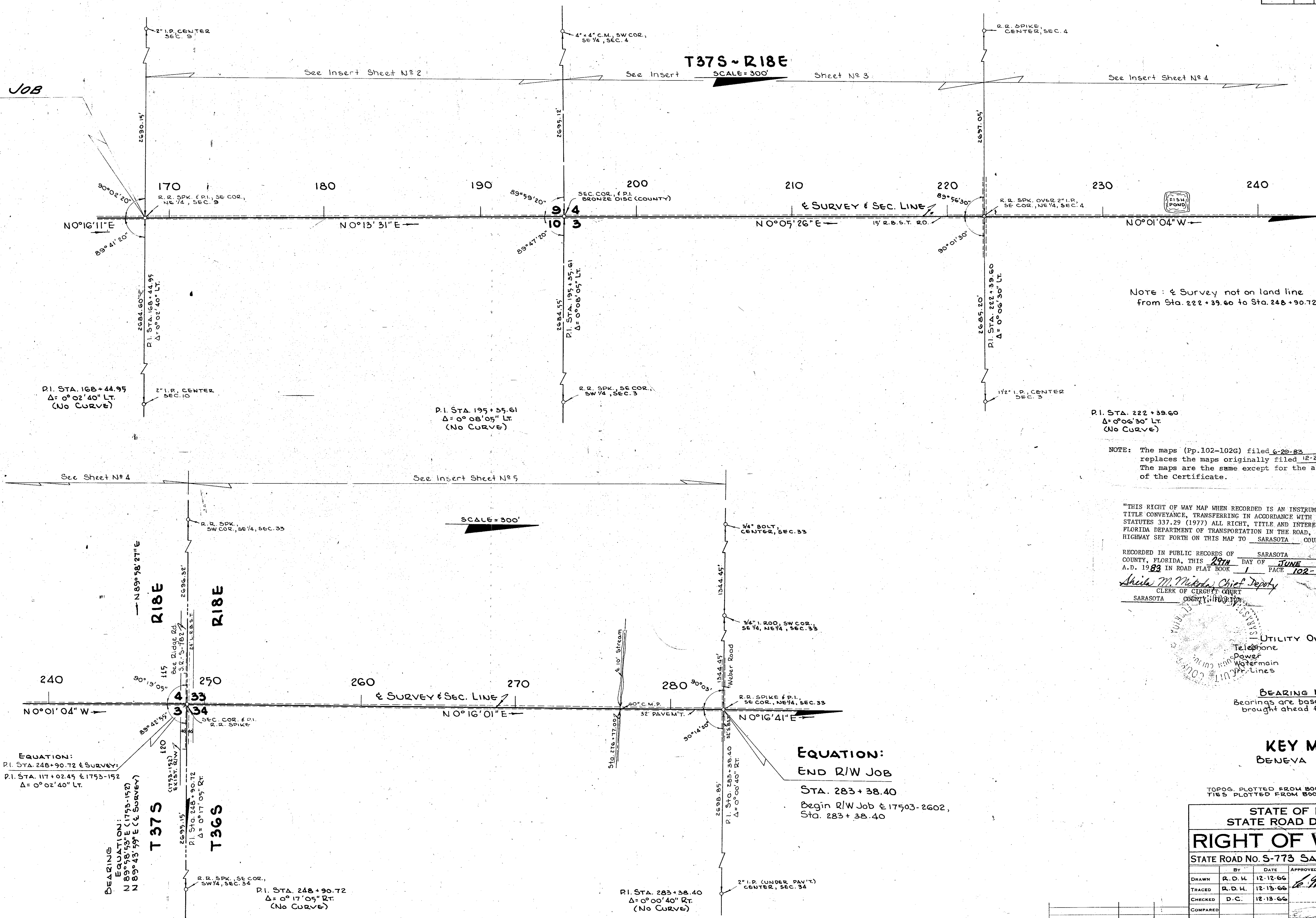


FED. ROAD DIV. No.	STATE	PROJECT No.	FISCAL YEAR	SHEET No.
3	FLA.	17503-2603		1

**BEGIN R/W JOB**  
 P.I. STA. 168+44.95  
 $\Delta = 0^{\circ}02'40''$  LT.  
 (NO CURVE)



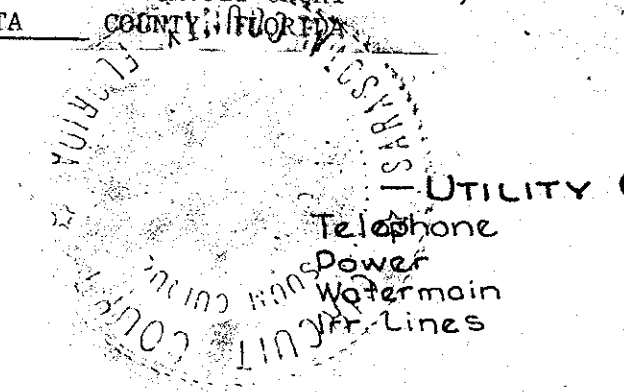
Note: & Survey not on land line from Sta. 222+39.60 to Sta. 248+90.72.

P.I. STA. 222+39.60  
 $\Delta = 0^{\circ}06'30''$  LT.  
 (No Curve)

NOTE: The maps (Pp.102-102G) filed 6-29-83 replaces the maps originally filed 12-2-74, 1-7-85. The maps are the same except for the addition of the Certificate.

"THIS RIGHT OF WAY MAP WHEN RECORDED IS AN INSTRUMENT OF TITLE CONVEYANCE, TRANSFERRING IN ACCORDANCE WITH FLORIDA STATUTES 337.29 (1977) ALL RIGHT, TITLE AND INTEREST OF THE FLORIDA DEPARTMENT OF TRANSPORTATION IN THE ROAD, STREET, HIGHWAY SET FORTH ON THIS MAP TO SARASOTA COUNTY."

RECORDED IN PUBLIC RECORDS OF SARASOTA COUNTY, FLORIDA, THIS 29th DAY OF JUNE A.D. 1983 IN ROAD PLAT BOOK 1 PAGE 102-102A  
*Sheila M. Nichols*, Chief Deputy  
 CLERK OF CIRCUIT COURT  
 SARASOTA COUNTY, FLORIDA



- UTILITY OWNERS —
- Telephone: General Telephone Co.
  - Power: Fla. Power & Light Co.
  - Watermain: Southgate Devel. Co.
  - Fire Lines: Minute Maid

**BEARING NOTE**  
 Bearings are based on true bearings brought ahead from 17503-2601.

**KEY MAP**  
 BENEVA ROAD

TOPOG. PLOTTED FROM BOOK 384202, 384195, 622058.  
 TIES PLOTTED FROM BOOK 384203.

EQUATION:  
 P.I. STA. 248+90.72 & SURVEY:  
 P.I. STA. 117+02.45 & 1753-152  
 $\Delta = 0^{\circ}02'40''$  LT.

**T37S**  
 BEARING EQUATION:  
 N 89°58'53"E (1753-152)  
 N 89°43'59"E (& Survey)

**T36S**  
 P.I. STA. 248+90.72  
 $\Delta = 0^{\circ}17'05''$  RT.  
 (NO CURVE)

**EQUATION:**  
**END R/W JOB**  
 STA. 283+38.40  
 Begin R/W Job & 17503-2602,  
 Sta. 283+38.40

P.I. STA. 283+38.40  
 $\Delta = 0^{\circ}00'40''$  RT.  
 (NO CURVE)

STATE OF FLORIDA  
 STATE ROAD DEPARTMENT  
**RIGHT OF WAY MAP**

STATE ROAD NO. 5-773 SARASOTA COUNTY

BY	DATE	APPROVED BY	DATE
DRAWN	R. D. H.	12-12-66	<i>W. Monte De Oca</i>
TRACED	R. D. H.	12-13-66	DISTRICT ENGINEER
CHECKED	D. C.	12-13-66	
COMPARED			
INDEXED			

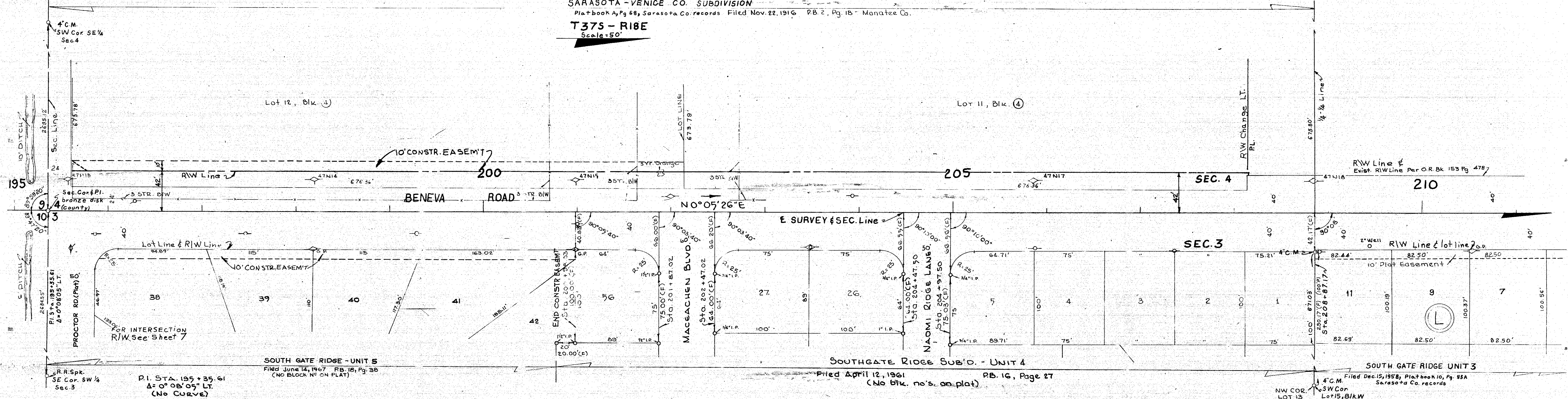
Rev. Utility Data	DC-1016	10-1-68
REVISION	BY	DATE

SECTION. 17503-2603 SHEET 1 OF

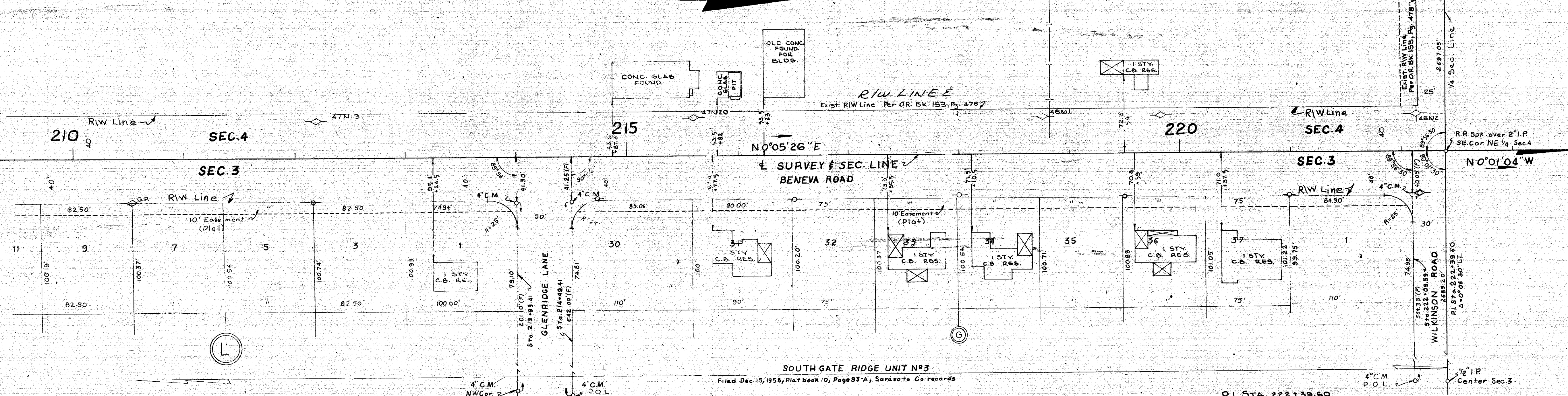
O.R.B. 1556/714

FED. ROAD DIV. No.	STATE	PROJECT No.	FISCAL YEAR	SHEET No.
3	FLA.	17503-2603		3

SARASOTA - VENICE CO. SUBDIVISION  
 Platbook A, Pg 68, Sarasota Co. records Filed Nov. 22, 1916 P.B. 2, Pg. 15 - Manatee Co.  
**T37S - R18E**  
 Scale = 50'



**SEC. 4**  
**T37S - R18E**  
 Scale = 50'



(F) INDICATES FIELD DIMENSIONS

STATE OF FLORIDA  
 STATE ROAD DEPARTMENT  
**RIGHT OF WAY MAP**  
 STATE ROAD No. 5-773 SARASOTA COUNTY

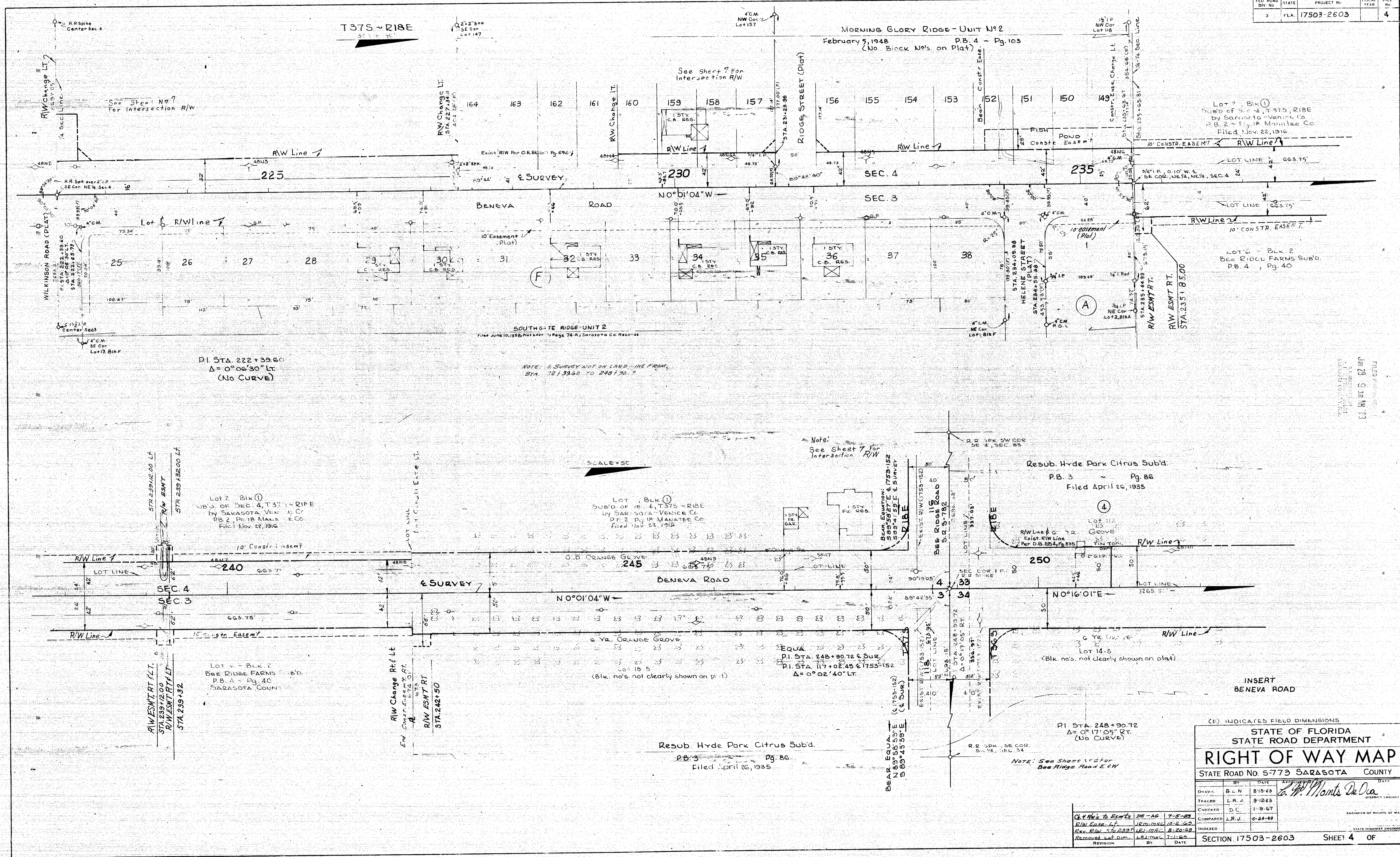
DRAWN	BY	DATE	APPROVED BY	DATE
TRACED	L.R.J.	8-22-63	<i>W. W. Monte De Oca</i>	
CHECKED	D.C.	12-22-64		
COMPARED	L.R.J.	6-24-69		
INDEXED				

ENGINEER OF RIGHTS OF WAY  
 STATE HIGHWAY ENGINEER

SECTION 17503-2603 SHEET 3 OF

FILED FOR RECORD  
 JUN 23 9 18 AM '73

FED. ROAD DIV. No.	STATE	PROJECT No.	FISCAL YEAR	SHEET No.
3	FLA.	17503-2603		4



P.I. STA. 222+39.60  
 $\Delta = 0^{\circ}06'30''$  LT.  
 (No Curve)

NOTE: A SURVEY NOT ON LAND - LINE FROM  
 STA. 221360 TO 248130.

SCALE = 1" = 50'

Note:  
 See Sheet 7 for  
 Intersection R/W

(F) INDICATES FIELD DIMENSIONS

STATE OF FLORIDA  
 STATE ROAD DEPARTMENT

**RIGHT OF WAY MAP**

STATE ROAD NO. 5-773 SARASOTA COUNTY

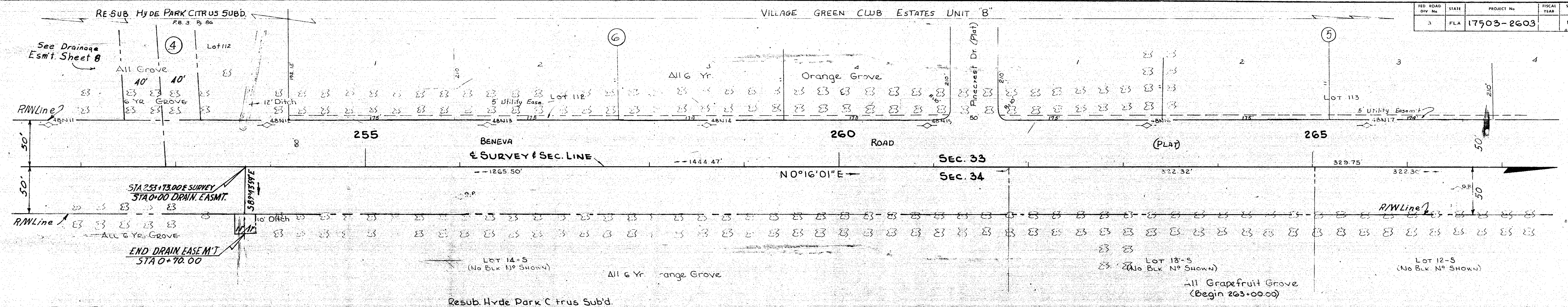
DATE	BY	DATE	DATE
8-15-63	B.L.N.	8-15-63	
9-12-63	L.R.J.	9-12-63	
1-9-67	D.C.	1-9-67	
6-24-69	L.R.J.	6-24-69	

Ch. 1 R/W's to Esmt's	DE-AG	7-5-69
R/W Easement Lt.	JRM-MHC	10-2-62
Rev. R/W Sta. 233	JRM-MHC	8-20-69
Removed Lot Dim.	L&L-MHC	7-1-69
REVISION	BY	DATE

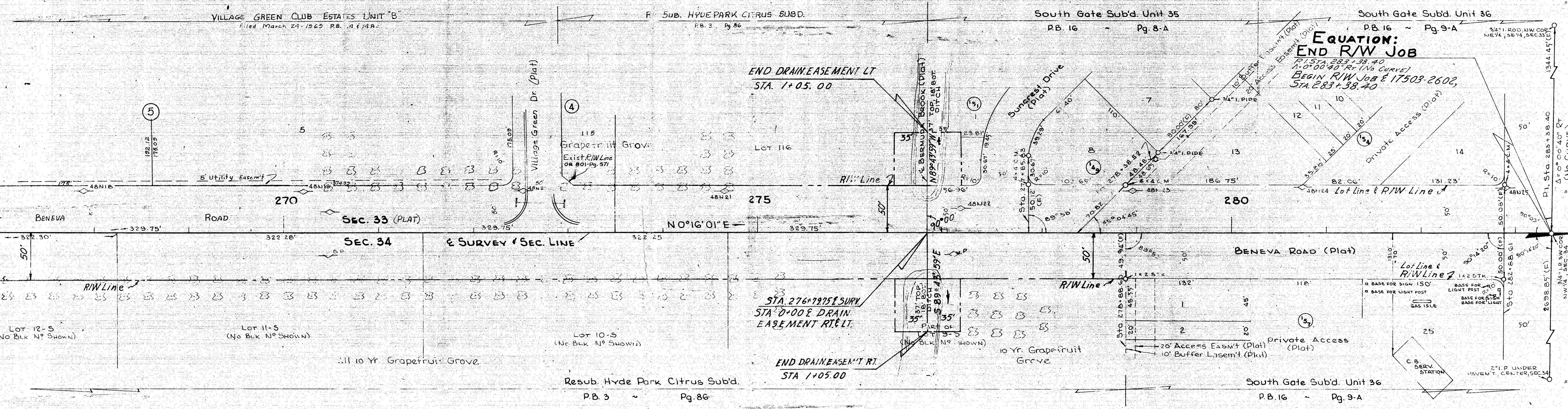
SECTION 17503-2603 SHEET 4 OF

FILED  
 JUN 29 9 36 AM '63  
 COUNTY ENGINEER

RD ROAD DIV No	STATE	PROJECT No	FISCAL YEAR	SHEET No
3	FLA	17503-2603		5



T365-R18E  
SCALE=50'



EQUATION:  
END R/W JOB  
PI STA 283+38.40  
Δ = 0°00'40" RT (No Curve)  
BEGIN R/W JOB E 17503-2602,  
STA 283+38.40

PI STA 283+38.40  
Δ = 0°00'40" RT  
(No Curve)

INSERT

(F) INDICATES FIELD DIMENSIONS

STATE OF FLORIDA  
STATE ROAD DEPARTMENT

### RIGHT OF WAY MAP

STATE ROAD NO. 5-773 SARASOTA COUNTY

BY	DATE	APPROVED BY	DATE
DRAWN R.D.H.	11-9-66	<i>R. Monte De Oca</i>	
TRACED R.D.H.	11-16-66		
CHECKED D.C.	11-17-66		
COMPALED L.P.V.	6-24-69		

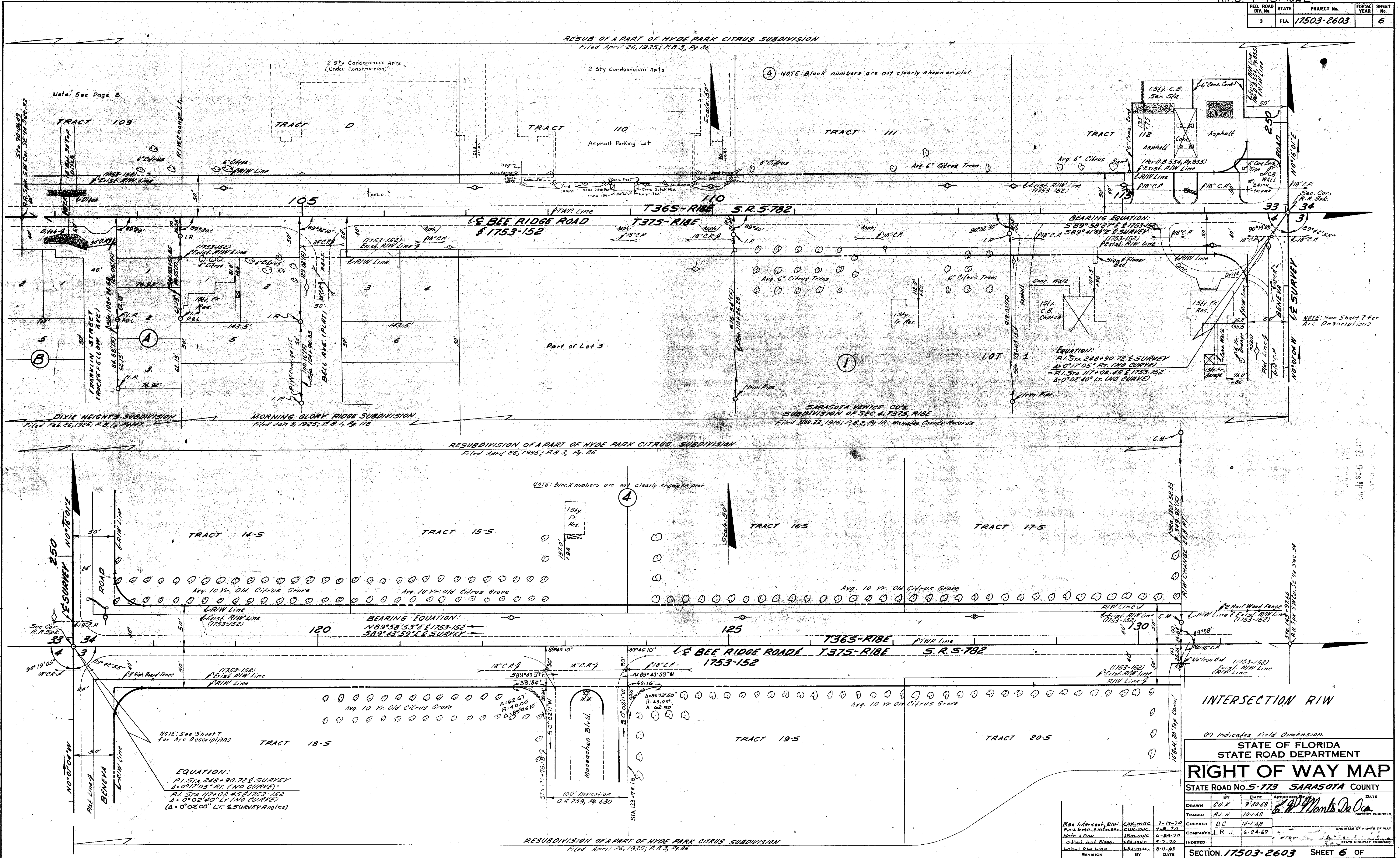
CHIEF OF RIGHTS OF WAY

SECTION 17503-2603 SHEET 5 OF

added exist R/w	BY: mhc	DATE: 8-20-69
added Subd	BY: mhc	DATE: 7-1-69
REVISION	BY	DATE

FILED FOR RECORD  
JUL 23 9 18 AM '69  
COUNTY CLERK  
SARASOTA COUNTY FLORIDA

FED. ROAD DIV. No.	STATE	PROJECT No.	FISCAL YEAR	SHEET No.
3	FLA.	17503-2603		6



STATE OF FLORIDA  
STATE ROAD DEPARTMENT

### RIGHT OF WAY MAP

STATE ROAD No. 5-773 SARASOTA COUNTY

BY	DATE	APPROVED BY	DATE
DRAWN	C.V.K.		9-20-68
TRACED	R.L.H.		10-1-68
CHECKED	D.C.		10-1-68
COMPARED	L.R.J.		6-24-69
INDEXED			

SECTION 17503-2603 SHEET 6 OF



