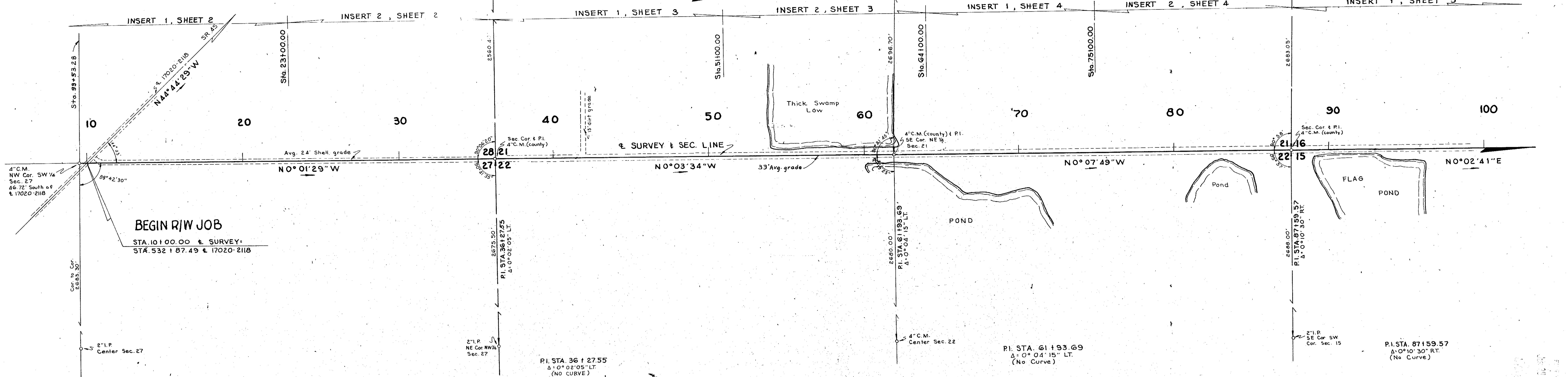
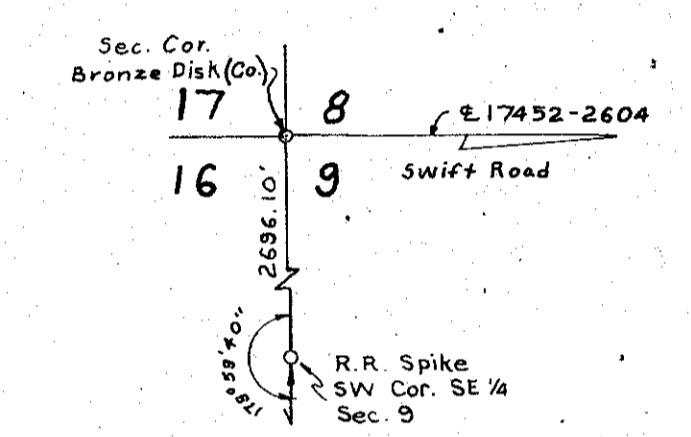


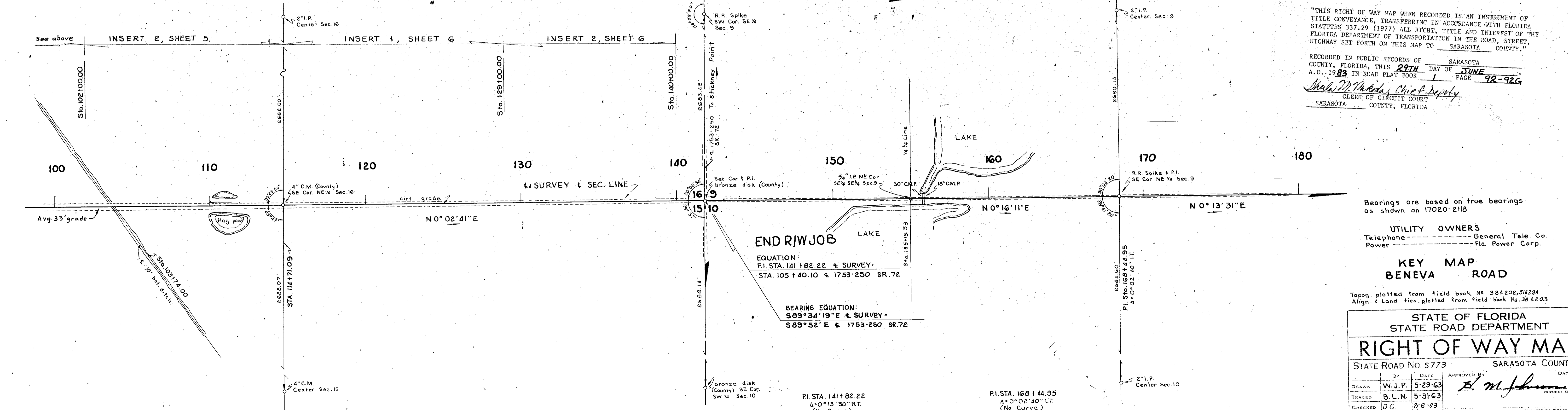
T 37S ~ R18E
Scale = 300'



NOTE: The maps (Pp. 92-92G) filed 6-20-83, replace the maps originally filed 12-7-83. The maps are the same except for the addition of the Certificate.



T37S ~ R18E
Scale = 300'



"THIS RIGHT OF WAY MAP WHEN RECORDED IS AN INSTRUMENT OF TITLE CONVEYANCE, TRANSFERRING IN ACCORDANCE WITH FLORIDA STATUTES 337.29 (1977) ALL RIGHT, TITLE AND INTEREST OF THE FLORIDA DEPARTMENT OF TRANSPORTATION IN THE ROAD, STREET, HIGHWAY SET FORTH ON THIS MAP TO SARASOTA COUNTY."

RECORDED IN PUBLIC RECORDS OF SARASOTA COUNTY, FLORIDA, THIS 24TH DAY OF JUNE A.D. 1983 IN ROAD PLAT BOOK 1 PAGE 92-92G

Shelby P. Thibodeau Chief Deputy
CLERK OF CIRCUIT COURT
SARASOTA COUNTY, FLORIDA

Bearings are based on true bearings as shown on 17020-2118

UTILITY OWNERS
Telephone ----- General Tele. Co.
Power ----- Fla. Power Corp.

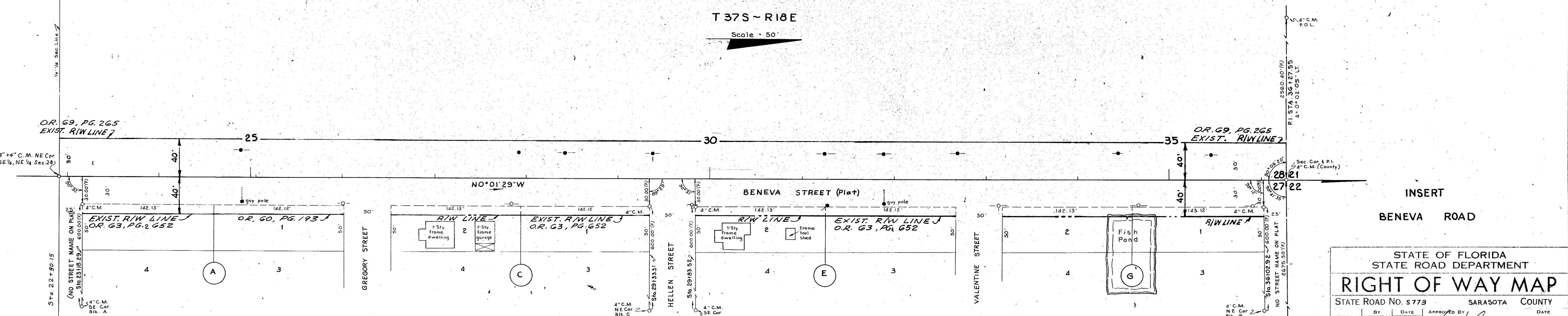
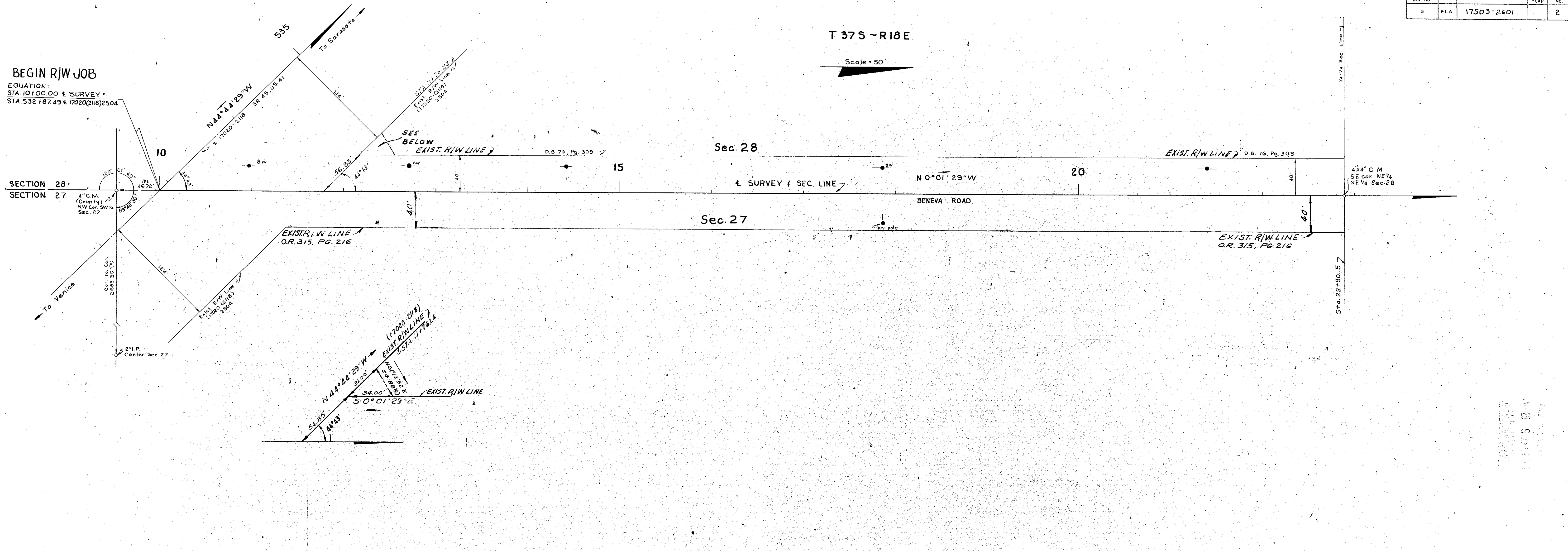
KEY MAP
BENEVA ROAD

Topog. plotted from field book No 384202, 516284
Align. & Land ties plotted from field book No 384203

STATE OF FLORIDA STATE ROAD DEPARTMENT	
RIGHT OF WAY MAP	
STATE ROAD No. 5773	SARASOTA COUNTY
BY: W.J.P. DATE: 5-29-63	APPROVED BY: <i>E. M. Johnson</i> DATE: _____
TRACED: B.L.N. 5-31-63	DISTRICT ENGINEER
CHECKED: D.C. 8-6-63	ENGINEER OF RIGHTS OF WAY
COMPARED: W.J.P. 12-3-63	DATE: _____
INDEXED: _____	DATE: _____
SECTION. 17503-2601 SHEET 1 OF _____	

O.R.B. 1566/713

FED. ROAD DIV. No.	STATE	PROJECT No.	FISCAL YEAR	SHEET No.
3	FLA.	17503-2601		2



PINE TREE ACRES (Sub'd)
 Filed April 7, 1952. Plat book 5, Page 97

STATE OF FLORIDA
 STATE ROAD DEPARTMENT
RIGHT OF WAY MAP
 STATE ROAD NO. 5773 SARASOTA COUNTY

DRAWN	W.J.P.	6-5-63	APPROVED BY	D. W. Johnson	DATE	
TRACED	B.L.N.	6-7-63	DISTRICT ENGINEER			
CHECKED	D.C.	8-14-63	ENGINEER OF RIGHTS OF WAY			
COMPARED	WLP	12-9-63	STATE HIGHWAY ENGINEER			
INDEXED						

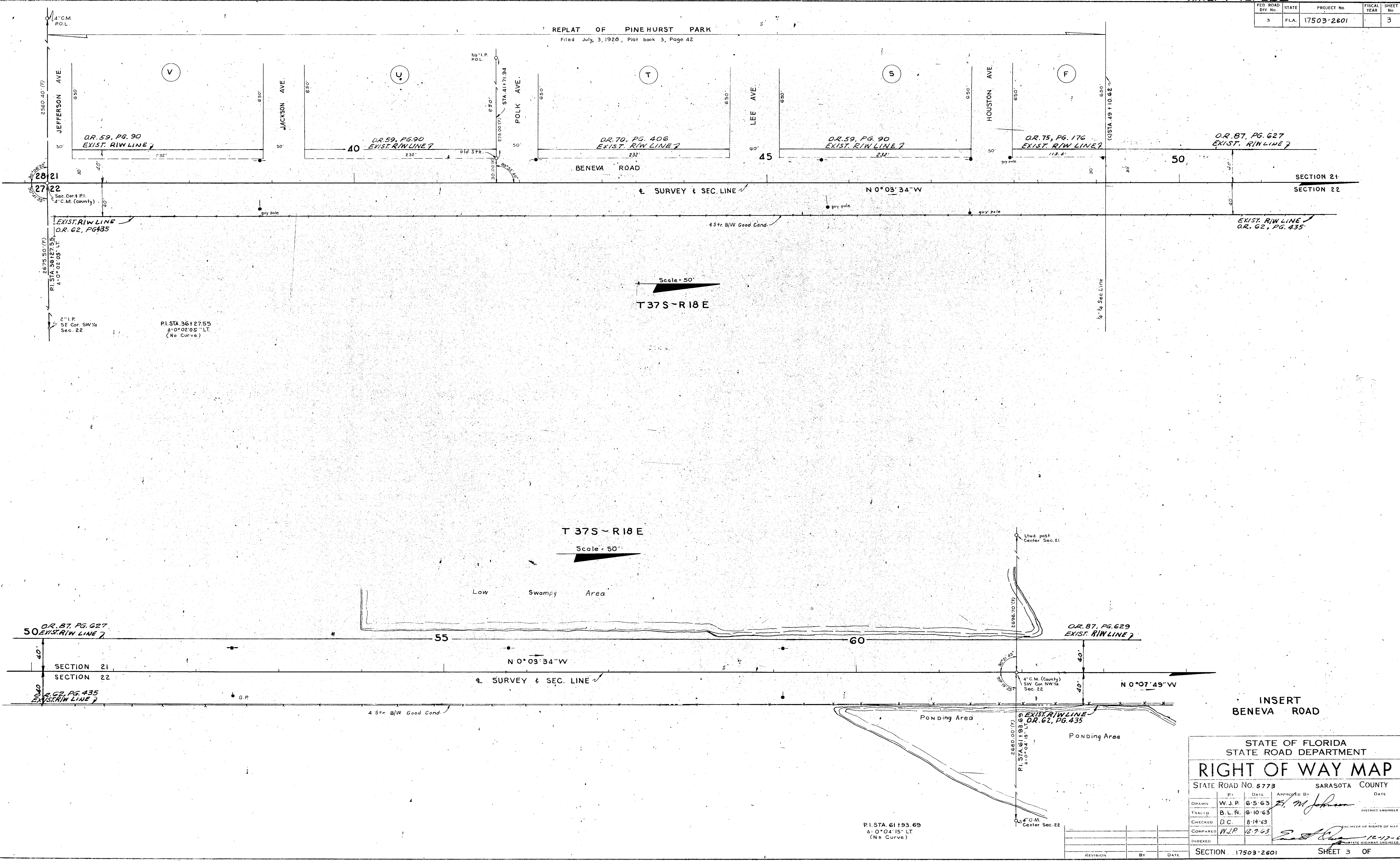
SECTION 17503-2601 SHEET 2 OF

changed Intersec. R/W	R.H.C.-T.O.W.	6-17-62
changed Intersec. R/W	M.E.S.-T.O.W.	2-20-62
changed Intersec. R/W	R.H.C.-T.O.W.	12-17-63
REVISION	BY	DATE

P.I. STA. 36+27.55
 4" 0' 02" 05" LT.
 (No Curve)

FED. ROAD DIV. No.	STATE	PROJECT No.	FISCAL YEAR	SHEET No.
3	FLA.	17503-2601		3

REPLAT OF PINEHURST PARK
 Filed July 3, 1926, Plat book 3, Page 42



Scale = 50'
 T 37 S - R 18 E

Scale = 50'
 T 37 S - R 18 E

INSERT
 BENEVA ROAD

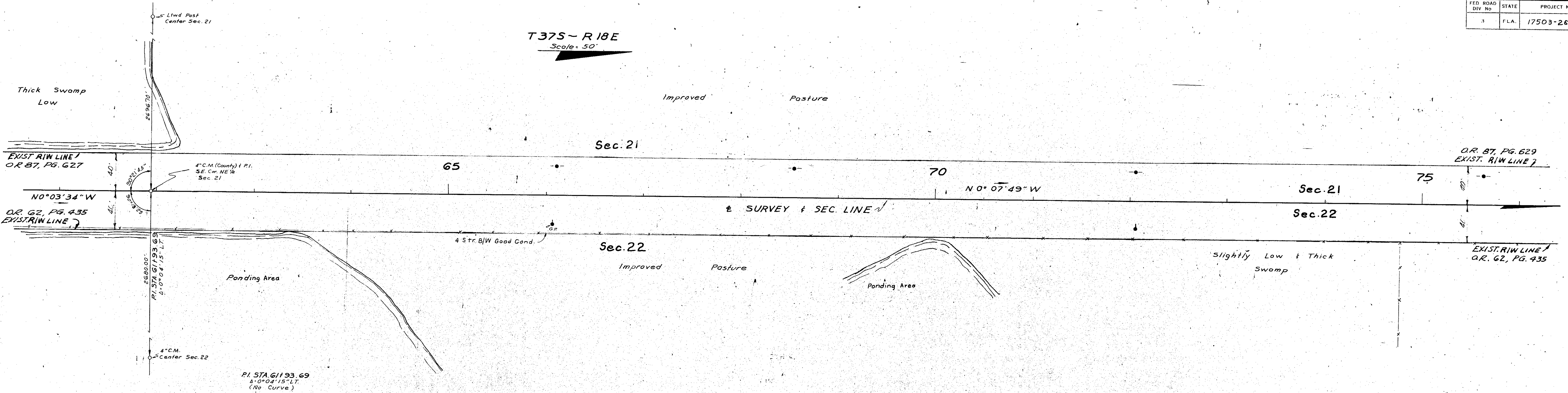
STATE OF FLORIDA STATE ROAD DEPARTMENT			
RIGHT OF WAY MAP			
STATE ROAD No. 5773		SARASOTA COUNTY	
By	DATE	APPROVED BY	DATE
W.J.P.	6-5-63	<i>E. M. Johnson</i>	
TRACED	B.L.N.	6-10-63	DISTRICT ENGINEER
CHECKED	D.C.	8-14-63	
COMPARED	W.J.P.	12-9-63	
INDEXED			
SECTION 17503-2601		SHEET 3 OF	

P.I. STA. 61193.69
 Δ 0° 04' 15" LT
 (No Curve)

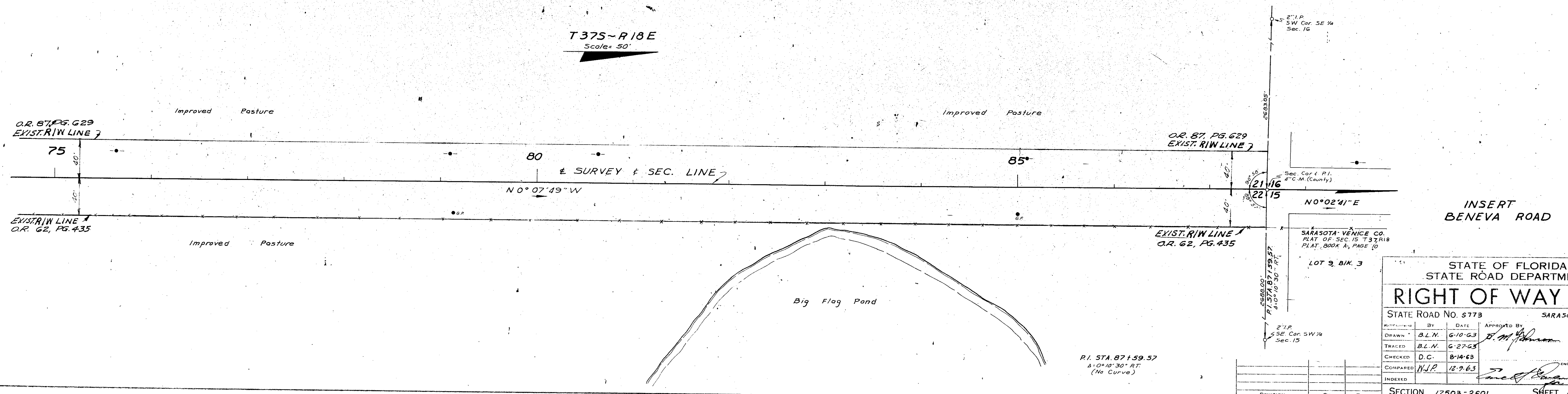
REVISION	BY	DATE

FED. ROAD DIV. No.	STATE	PROJECT No.	FISCAL YEAR	SHEET No.
3	FLA.	17503-2601		4

T37S-R18E
Scale = 50'



T37S-R18E
Scale = 50'



STATE OF FLORIDA
STATE ROAD DEPARTMENT

RIGHT OF WAY MAP

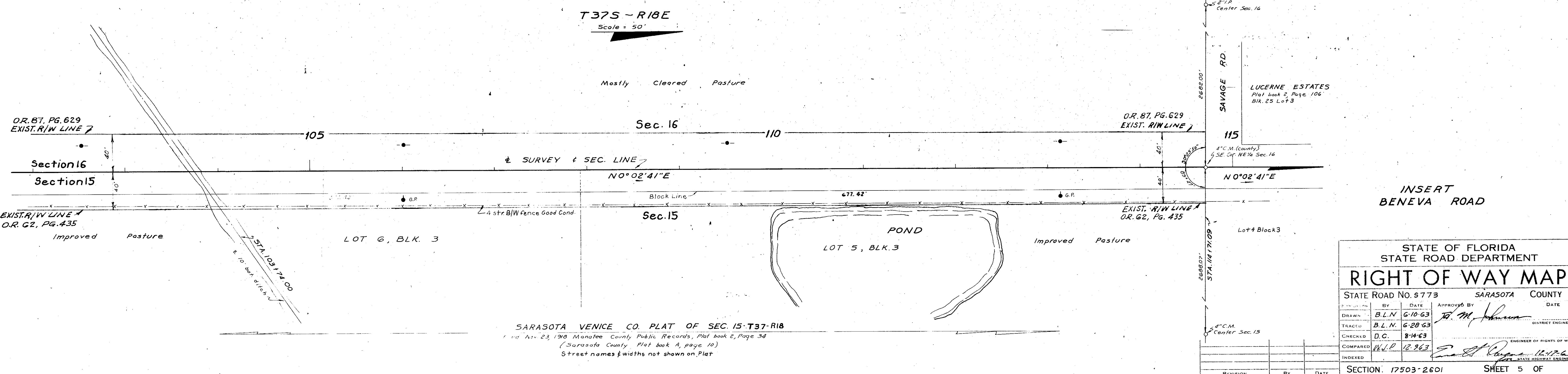
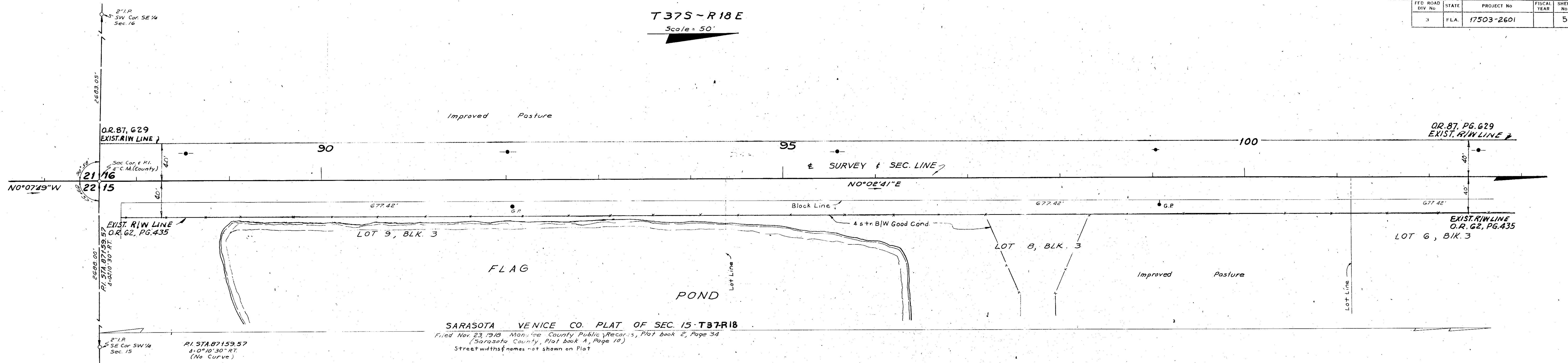
STATE ROAD No. 5773 SARASOTA COUNTY

DESIGNED BY	DATE	APPROVED BY	DATE
DRAWN BY	6-10-63	<i>[Signature]</i>	
TRACED BY	6-27-63		
CHECKED BY	8-14-63		
COMPARED BY	12-9-63		
INDEXED BY			

ENGINEER OF RIGHTS OF WAY
STATE HIGHWAY ENGINEER

SECTION 17503-2601 SHEET 4 OF 4

FED. ROAD DIV. No.	STATE	PROJECT No.	FISCAL YEAR	SHEET No.
3	FLA.	17503-2601		5



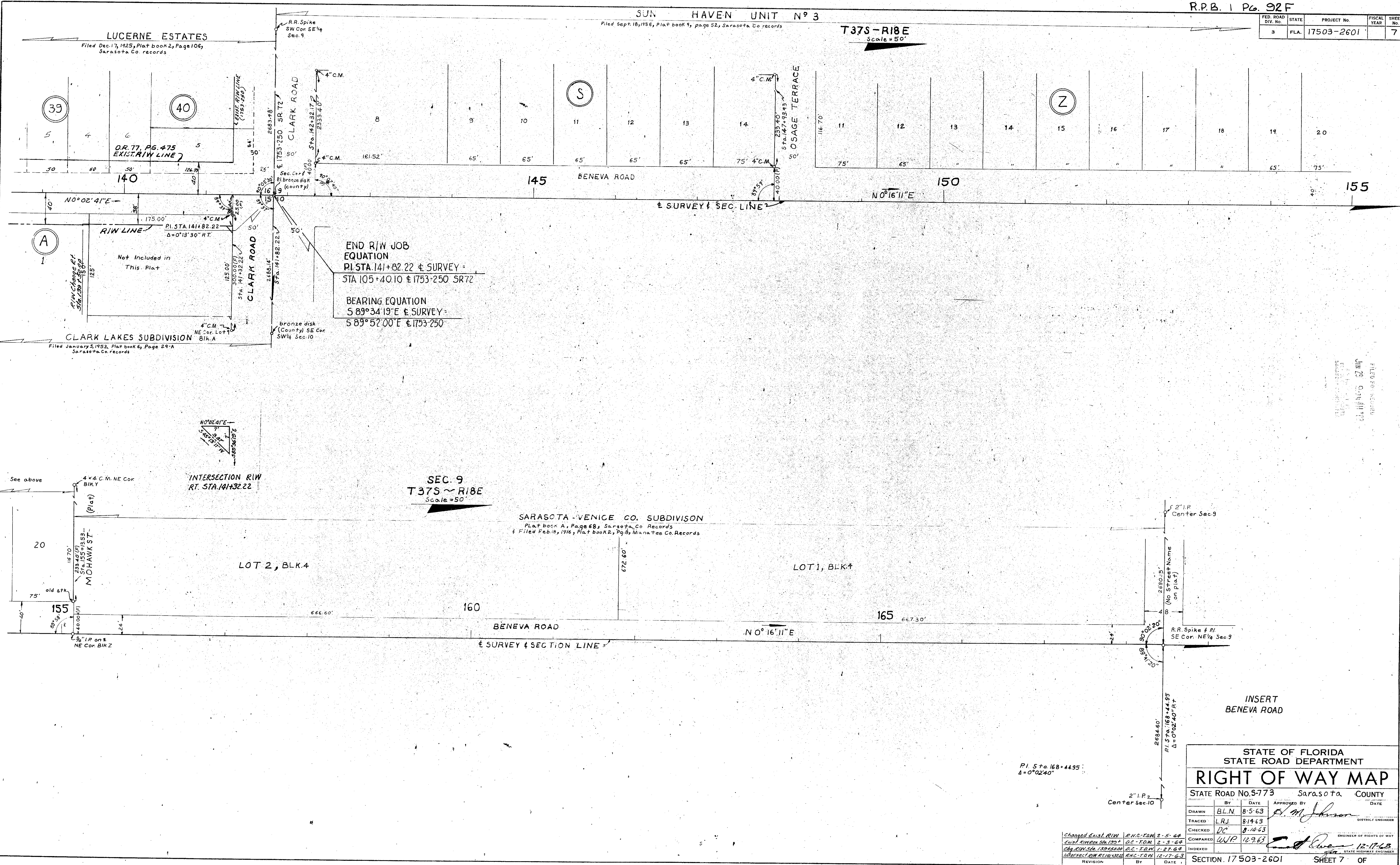
INSERT
BENEVA ROAD

STATE OF FLORIDA STATE ROAD DEPARTMENT			
RIGHT OF WAY MAP			
STATE ROAD No. 5773		SARASOTA COUNTY	
BY	DATE	APPROVED BY	DATE
DRAWN	B.L.N. 6-10-63	<i>J.M. Johnson</i>	
TRACED	B.L.N. 6-29-63		
CHECKED	D.C. 8-14-63		
COMPARED	W.L.P. 12-3-63		
INDEXED			
REVISION		By	DATE

SECTION 17503-2601 SHEET 5 OF

SUN HAVEN UNIT N° 3
Filed Sept. 18, 1956, Plat book 3, page 52, Sarasota Co. records

FED. ROAD DIV. No.	STATE	PROJECT No.	FISCAL YEAR	SHEET No.
3	FLA.	17503-2601		7



FILED RECORDS
 JUN 25 9 34 AM '63
 COUNTY CLERK
 SARASOTA COUNTY, FLA.

INSERT
BENEVA ROAD

STATE OF FLORIDA
 STATE ROAD DEPARTMENT
RIGHT OF WAY MAP
 STATE ROAD No. 5-773 Sarasota COUNTY

BY	DATE	APPROVED BY	DATE
BLN	8-5-63	<i>[Signature]</i>	
TRACED	LRJ	8-14-63	DISTRICT ENGINEER
CHECKED	DC	8-10-63	
COMPARED	WJP	12-9-63	ENGINEER OF RIGHTS OF WAY
INDEXED			STATE HIGHWAY ENGINEER

REVISION: Changed Exist. R/W, East R/W Sta. 130+00, City R/W Sta. 139+45.00, Intersect. R/W Sta. 142+00.00

REVISION: BY DATE

SECTION. 17 503-2601 SHEET 7 OF

