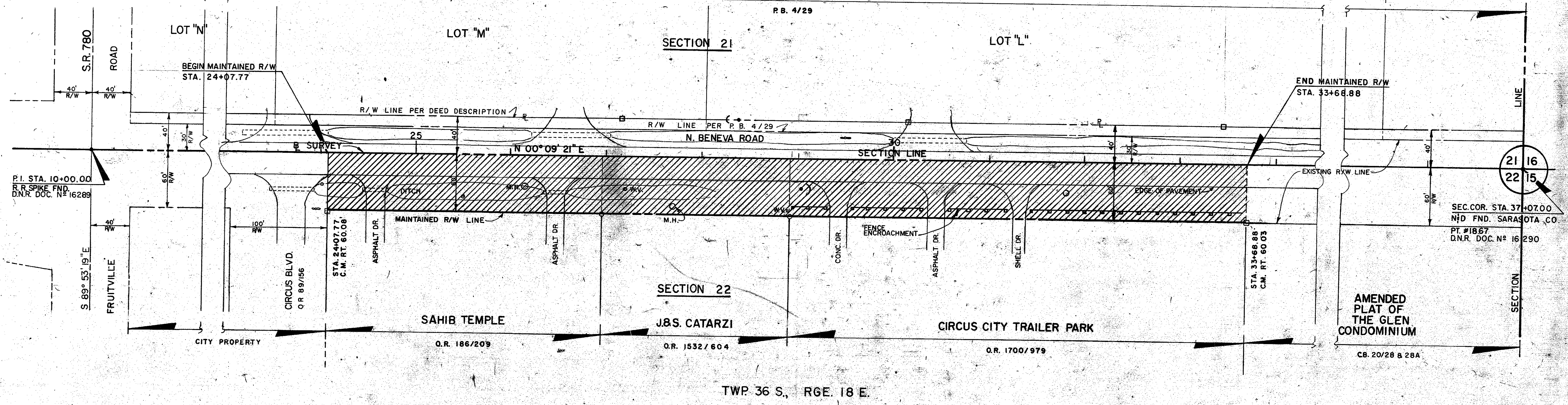


Dec 11 3 46 PM '85

SCALE 1"=50'

SUB. OF NE 1/4 OF SEC. 21-36-18



SURVEYOR'S NOTE

1. BEARINGS SHOWN ARE BASED ON S.R.D. RIGHT-OF-WAY MAP (SECTION 17503-2602) FILED IN R.P.B. 1, PG. 112 G. OF THE PUBLIC RECORDS OF SARASOTA COUNTY, FLORIDA, THE CENTERLINE, THEREOF, BEING S 89° 53' 19" E.

SURVEYOR'S CERTIFICATE

I HEREBY CERTIFY THAT THIS MAINTAINED R/W MAP REPRESENTS A BOUNDARY SURVEY OF THE ROAD AS SHOWN, THAT THE SURVEY WAS RECENTLY PERFORMED UNDER MY DIRECTION, AND THAT IT IS TRUE AND CORRECT TO THE BEST OF MY KNOWLEDGE AND BELIEF, AND THAT IT MEETS THE MINIMUM TECHNICAL STANDARDS FOR LAND SURVEYING IN THE STATE OF FLORIDA (CHAPTER 21 HH-6, F.A.C.) EFFECTIVE SEPT. 1981.

DATE OF SURVEY: 7/12/85
E.R. EMERSON, COUNTY SURVEYOR
PROFESSIONAL LAND SURVEYOR NO. 1867
STATE OF FLORIDA
1301 CATTLEMAN ROAD
SARASOTA, FLORIDA 33582

THIS IS TO CERTIFY THAT THE NUMBERED SHEET ONE (1) OF ONE (1) CONSTITUTES THE OFFICIAL MAINTENANCE MAP SHOWING THE LOCATION AND SURVEY BY THE SARASOTA COUNTY, FLORIDA, TRANSPORTATION DEPARTMENT FOR NORTH BENEVA ROAD LYING BETWEEN CIRCUS BLVD. AND THE GLEN CONDOMINIUM IN SECTION 22, TOWNSHIP 36 S., RANGE 18 E. SARASOTA COUNTY, FLORIDA. THE PROPERTY SHOWN CROSS-HATCHED ON THIS MAP HAS BEEN VESTED IN THE CITY OF SARASOTA, FLORIDA, PURSUANT TO THE PROVISIONS OF CHAPTER 95.361, FLORIDA STATUTES OF 1963.

ACCEPTED FOR FILE AND RECORDED IN THE PUBLIC RECORDS OF SARASOTA COUNTY, FLORIDA THIS 11 DAY OF DEC. A. D. 1985, IN ROAD PLAT BOOK 3 PAGE 1

THIS IS TO CERTIFY THAT THIS MAINTENANCE MAP WAS APPROVED BY RESOLUTION NO. XXXXXXXXX PASSED AND ADOPTED BY THE CITY COMMISSION OF THE CITY OF SARASOTA, FLORIDA, ON THE 10th DAY OF Nov. A. D., 1985.

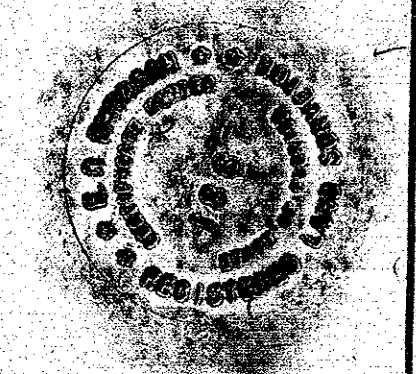
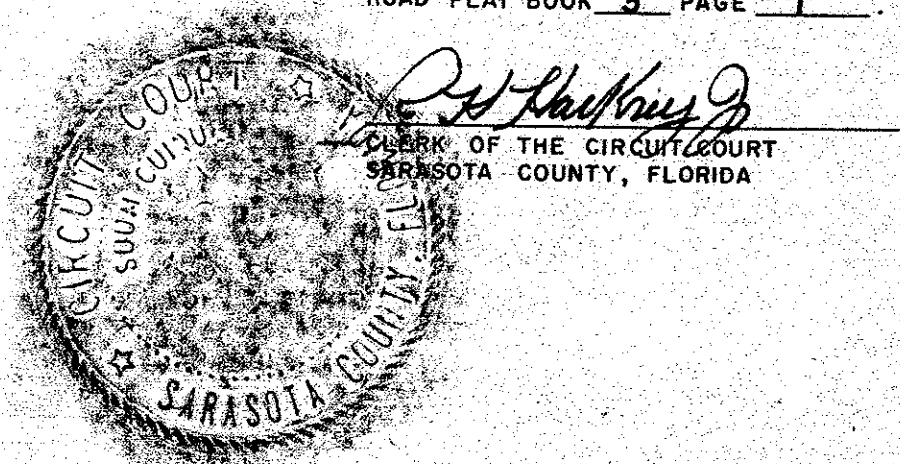
CITY COMMISSION OF THE CITY OF SARASOTA, FLORIDA BY:

Whelan G. ...

ATTEST: ROBERT A. ...

THIS IS TO CERTIFY THAT THE LIMITS OF THE ROADWAY OUTSIDE OF THE PLATTED OR RECORDED RIGHT-OF-WAY AS SHOWN CROSS-HATCHED HEREON, HAS BEEN MAINTAINED CONTINUOUSLY FOR OVER FOUR (4) YEARS WITHOUT INTERRUPTION.

R.B. Minster
DIRECTOR OF PUBLIC WORKS



MAINTAINED RIGHT OF WAY MAP		SCALE: 1"=50'	REVISIONS	
BENEVA ROAD		DATE: 10/22/85	LTR.	BY DATE DESCRIPTION
CIRCUS BLVD. TO THE GLEN CONDOMINIUM		DESIGNED BY:		
CITY OF SARASOTA		DRAWN BY: M.A.S.		
ENGINEERING DIVISION		CHECKED BY:		
SARASOTA, FLORIDA		FILE OR WER: L SHEET: 20		
SURVEYOR'S NOTE 6-18-87 PEE				