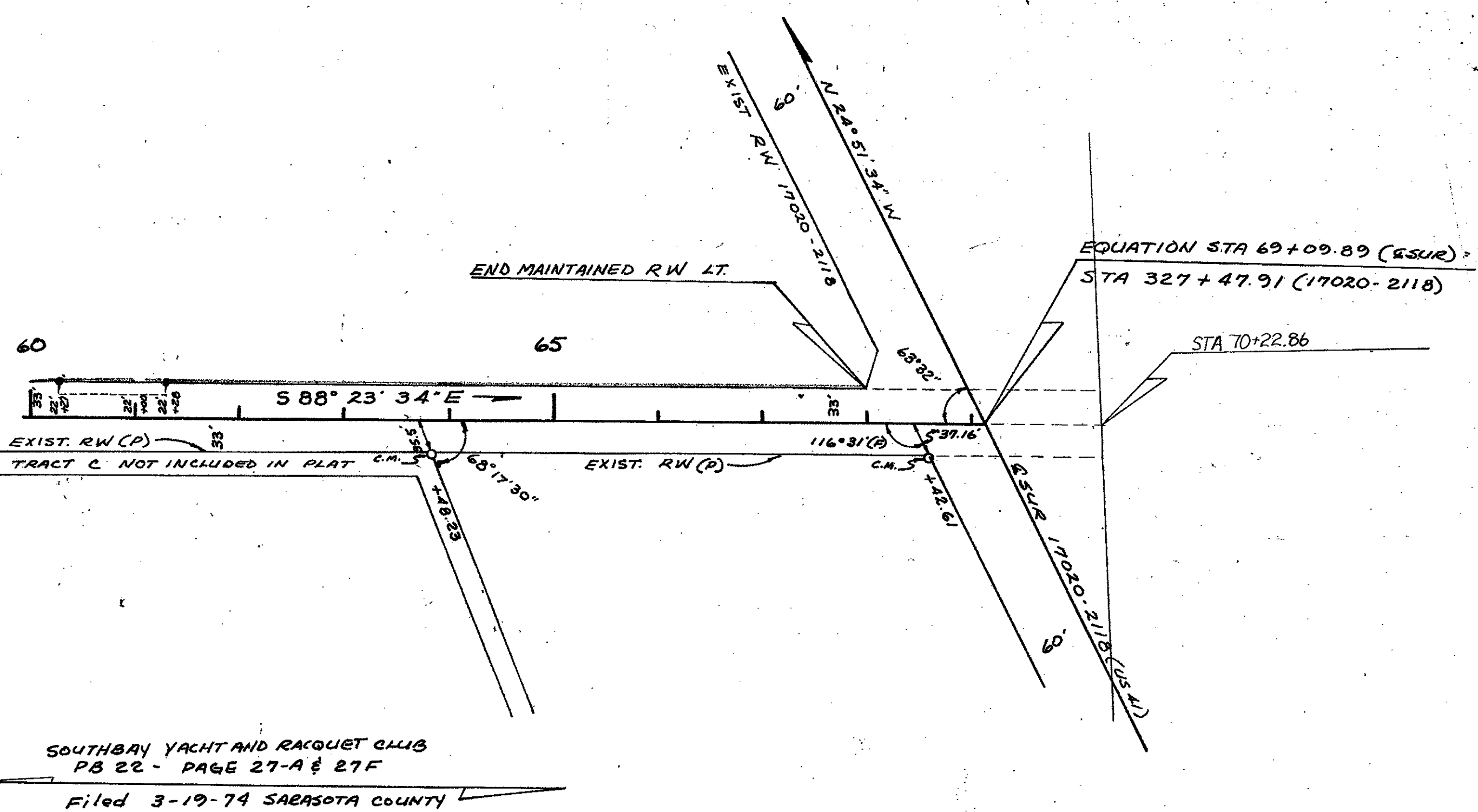
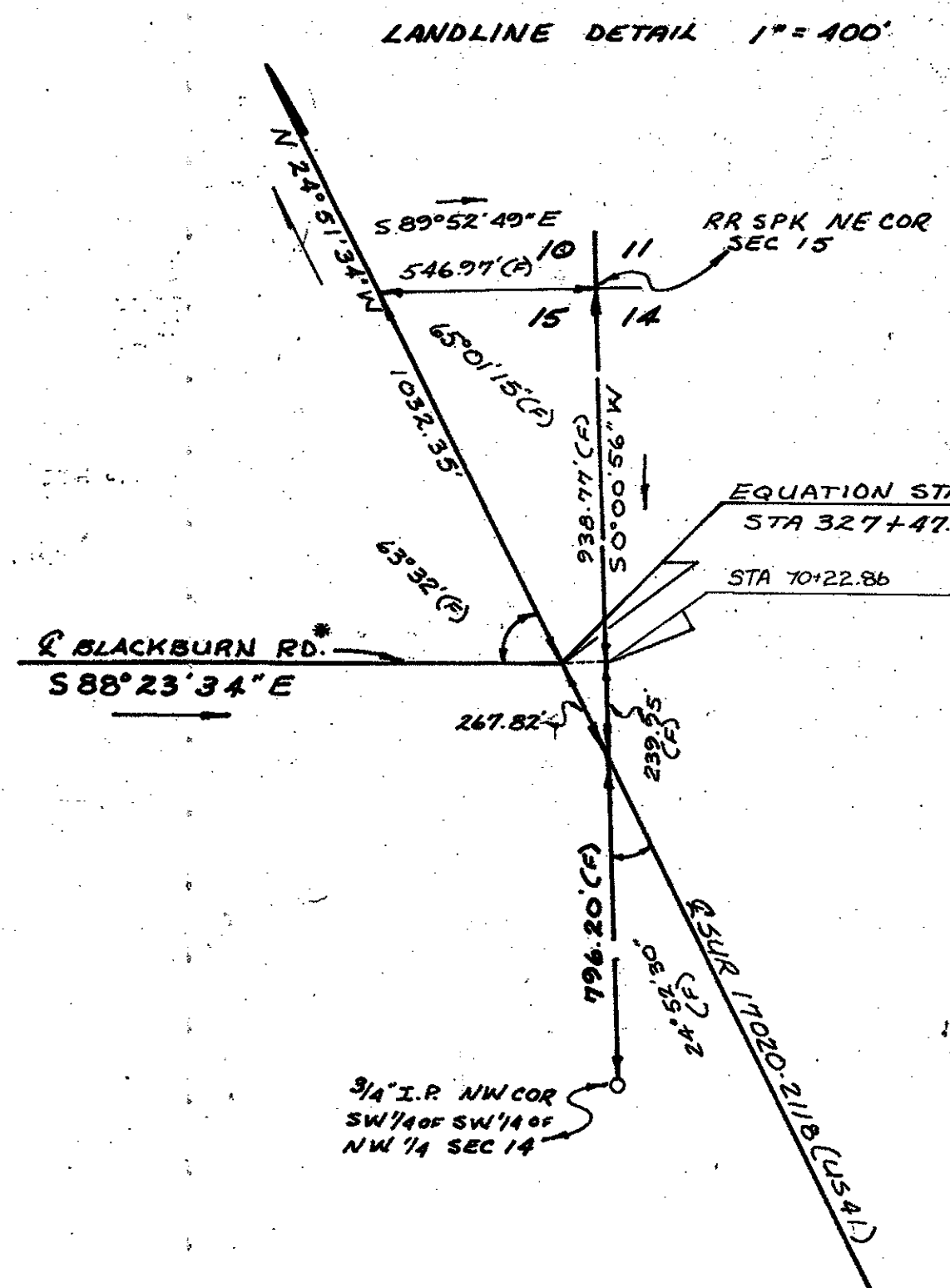


NOTE
 SEE DB 79, pg 446 for ~~Maintained~~ ^{Classified} R/W
 STA. 35+22.86 - Extended STA 70+22.86
 R/W = 33' each side of C.

SOUTHBAY YACHT AND RACQUET CLUB
 PB 22 - Page 27-A & 27-F, FILED 3-19-74
 SARASOTA COUNTY



SOUTHBAY YACHT AND RACQUET CLUB
 PB 22 - PAGE 27-A & 27-F
 Filed 3-19-74 SARASOTA COUNTY



REVISED R/W PER DB 79/446, 33' EACH SIDE OF C 1-7-88 RAK
 *Blackburn Rd. = Blackburn Point Rd.

NOTE
 Maintained R/W Markers
 set by County 4-28-86
 thru 5-14-86

LEGEND
 □ ○ = Survey markers found
 as noted.
 ● = Iron Rod w/Red Cap
 marked County R/W,
 PLS 1867, set at
 M/R/W breaks unless
 otherwise shown.

SURVEYOR'S CERTIFICATION

I hereby certify that this map represents a Field Survey of the Maintained R/W Line as shown hereon, that the Survey was recently performed under my direction, that it is true and correct to the best of my knowledge and belief, and that it meets the Minimum Technical Standards of Land Surveying in the State of Florida (Chapter 21 HH-6, F.A.C.), effective September 1, 1981. The R/W markers were set as indicated in the legend.

Date of Survey: May 14, 1986

E.R. Emerson
 E.R. EMERSON
 Professional Land Surveyor
 No. 1867, State of Florida
 County Surveyor
 1301 Cattlemen Road
 Sarasota, Florida 33582-9631

5-16-86
 Date

ACCEPTED FOR files and recorded in the public
 Records of Sarasota County, Florida this
~~23rd~~ day of July A.D. 1986, in Road
 Plat Book 3 Page 16
 Clerk of Circuit Court Sarasota County,
 Florida.

Sheila M. McInnis
 Chief Deputy Clerk

THIS IS TO CERTIFY that the within and attached sheet numbered 1 of 1 inclusive, constitute a true copy of the official RIGHT OF WAY MAP showing Location and Survey by the State of Florida, Department of Transportation for a portion of State Road 782, designated as Section 17100 in Sarasota County, Florida.

THE PROPERTY outlined in RED ink, and labeled MAINT R/W LINE on the said sheets has been vested in the State of Florida, Department of Transportation, pursuant to the provisions of Section 95.361 Florida Statutes.

IN WITNESS WHEREOF, We have hereunto set our hands and affixed the seal of the State of Florida, Department of Transportation, at Tallahassee, Florida, this 11th day of June, A.D. 1979.

SECRETARY OF TRANSPORTATION
 STATE OF FLORIDA, DEPARTMENT OF TRANSPORTATION

EXECUTIVE SECRETARY
 STATE OF FLORIDA, DEPARTMENT OF TRANSPORTATION

STATE OF FLORIDA DEPARTMENT OF TRANSPORTATION			
MAINTAINED RIGHT OF WAY MAP			
STATE ROAD No. <u>782</u>	<u>SARASOTA</u>	COUNTY	
DRAWN BY <u>JS</u>	DATE <u>4-27-79</u>	APPROVED BY <u>C.W. Mont De Dea</u>	DIVISION ENGINEER
TRACKED BY <u>JS</u>	DATE <u>5-2-79</u>		
CHECKED BY <u>L.R.J.</u>	DATE <u>5-3-79</u>	<u>L.R.J.</u>	MEMBER OF RIGHT OF WAY
DESIGNED BY			STATE HIGHWAY ENGINEER
INDEXED BY			
SECTION <u>17100</u>		SH. 10F1	