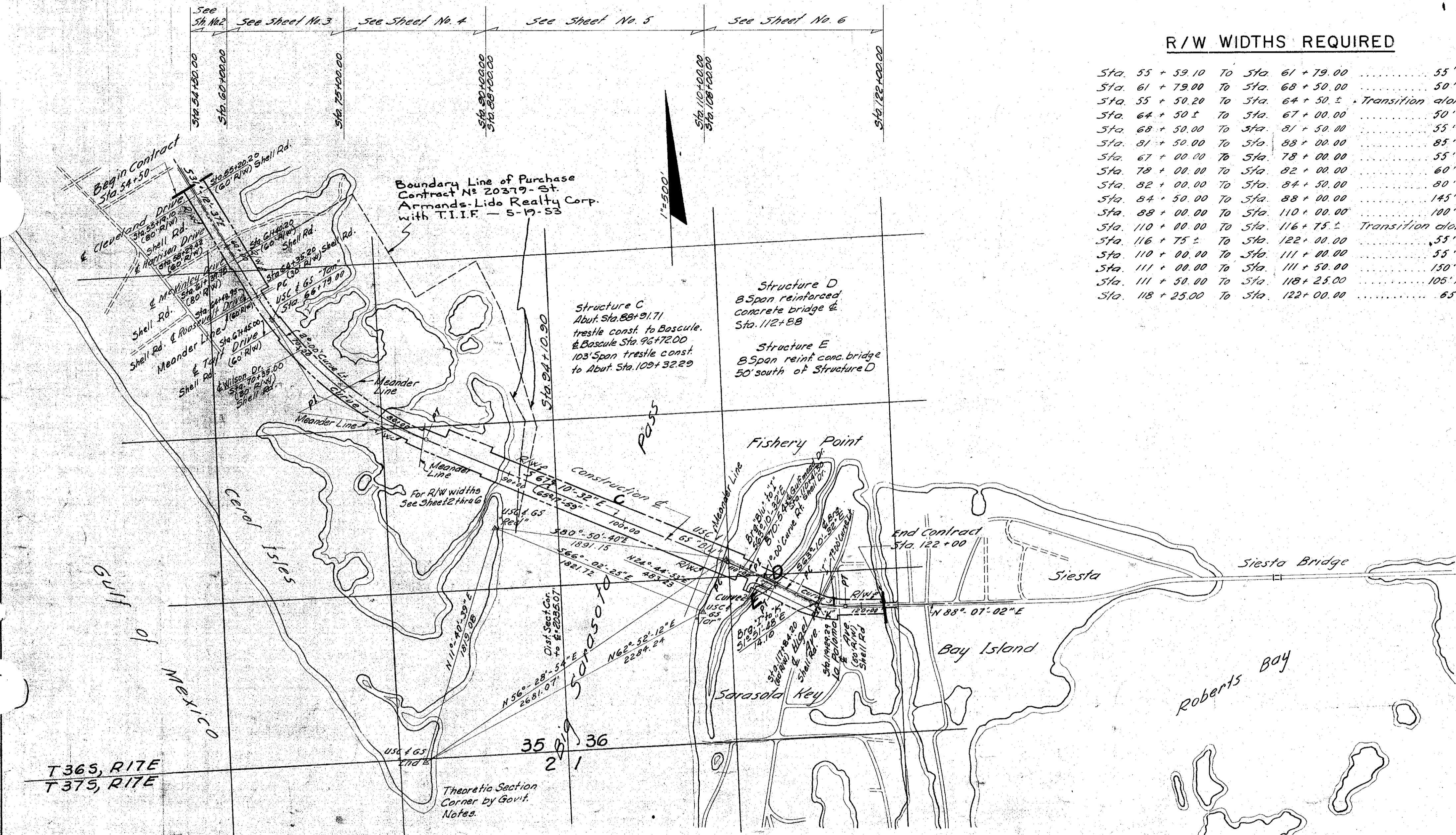


FED. ROAD DIV. NO.	STATE	PROJECT NO.	FISCAL YEAR	SHEET NO.
3	FLA.	1715-175		1

R/W WIDTHS REQUIRED

Sta. 55 + 59.10	To Sta. 61 + 79.00	55' Rt.
Sta. 61 + 79.00	To Sta. 68 + 50.00	50' Rt.
Sta. 55 + 50.00	To Sta. 64 + 50.00	Transition along existing R/W Lt.
Sta. 64 + 50.00	To Sta. 67 + 00.00	50' Lt.
Sta. 68 + 50.00	To Sta. 81 + 50.00	55' Rt.
Sta. 81 + 50.00	To Sta. 88 + 00.00	85' Rt.
Sta. 67 + 00.00	To Sta. 78 + 00.00	55' Lt.
Sta. 78 + 00.00	To Sta. 82 + 00.00	60' Lt.
Sta. 82 + 00.00	To Sta. 84 + 50.00	80' Lt.
Sta. 84 + 50.00	To Sta. 88 + 00.00	145' Lt.
Sta. 88 + 00.00	To Sta. 110 + 00.00	100' Lt. & Rt.
Sta. 110 + 00.00	To Sta. 116 + 75.00	Transition along existing R/W Lt.
Sta. 116 + 75.00	To Sta. 122 + 00.00	55' Lt.
Sta. 110 + 00.00	To Sta. 111 + 00.00	55' Rt.
Sta. 111 + 00.00	To Sta. 111 + 50.00	150' Rt.
Sta. 111 + 50.00	To Sta. 118 + 25.00	105' Rt.
Sta. 118 + 25.00	To Sta. 122 + 00.00	65' Rt.



T365, RITE
T375, RITE

Theoretic Section
Corner by Govt.
Notes.

①	②	③
P.I. = Sta. 74 + 24.95 Δ = 35° - 57' - 55" Lt. D = 2° - 00' - 00" T = 929.87' L = 1798.26' R = 2864.79' PC = Sta. 64 + 95.08 PT = Sta. 82 + 93.34	P.I. = Sta. 110 + 96.85 Δ = 4° - 00' - 00" Rt. D = 1° - 00' - 00" T = 200.08' L = 400.00' R = 5129.38' PC = Sta. 108 + 96.77 PT = Sta. 112 + 96.77	P.I. = Sta. 116 + 84.84 Δ = 28° - 42' - 26" Lt. D = 7° - 00' - 00" T = 209.45' L = 410.10' R = 818.51' PC = Sta. 114 + 75.39 PT = Sta. 118 + 85.49

NOTES

1. 1/2 Sect. & 1/4 Sect. lines were not established by original government survey

CORRECT AS TO RIGHT OF WAY REQUIREMENTS
 M.N. QUADE, PARTNER
 PARSONS, BRINCKERHOFF, HALL & MACDONALD
 DATE 4/21/52

KEY MAP

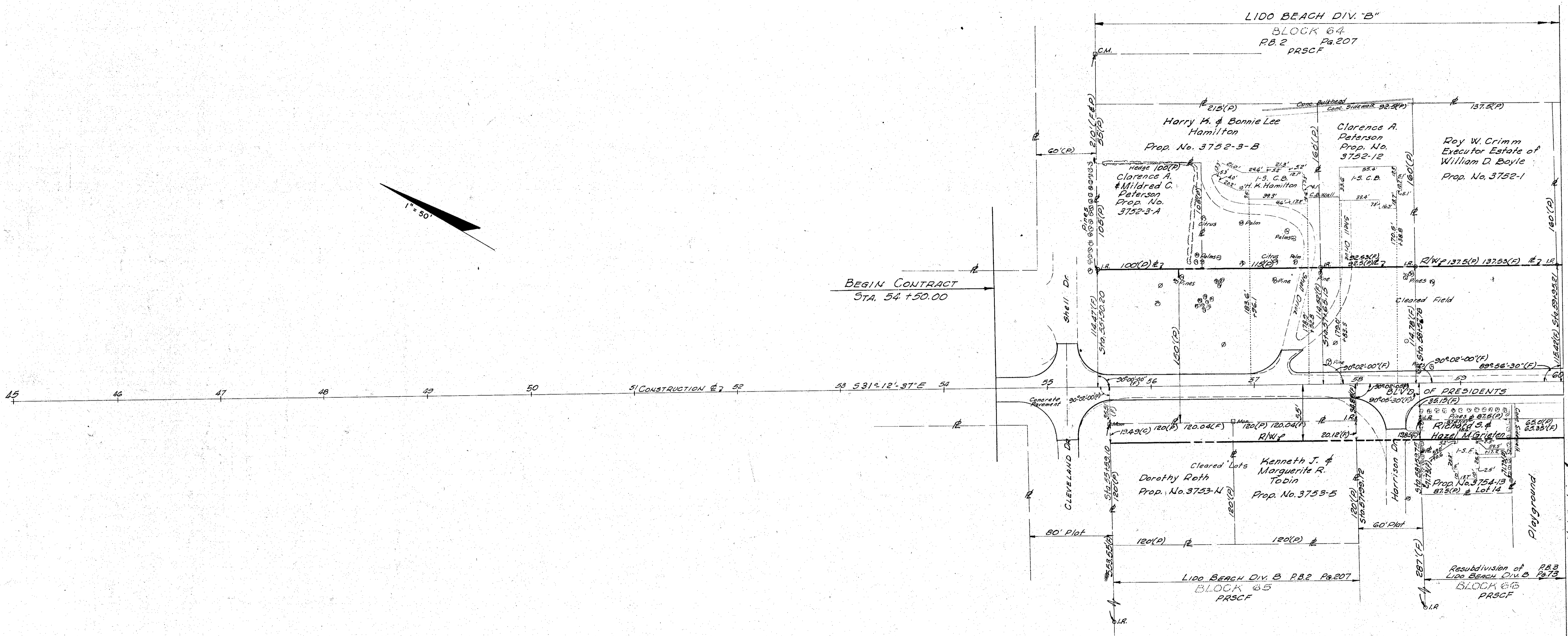
STATE OF FLORIDA
STATE ROAD DEPARTMENT

RIGHT OF WAY MAP

SECTION NO. 1715-175 St. 1

ROAD NO. 789 SARASOTA COUNTY

SCALE: 1"=500'	NAMES	DATES	APPROVED BY
DRAWN	L.A.P.	4-26-56	A.M. Johnson DIVISION ENGINEER
TRACED	A.L.	4-26-56	
INDEXED			STATE HIGHWAY ENGINEER
REVISED			



BEGIN CONTRACT STA. 54 + 50.00

CONSTRUCTION #7 52

53 531°12'37"E 54

NOTES

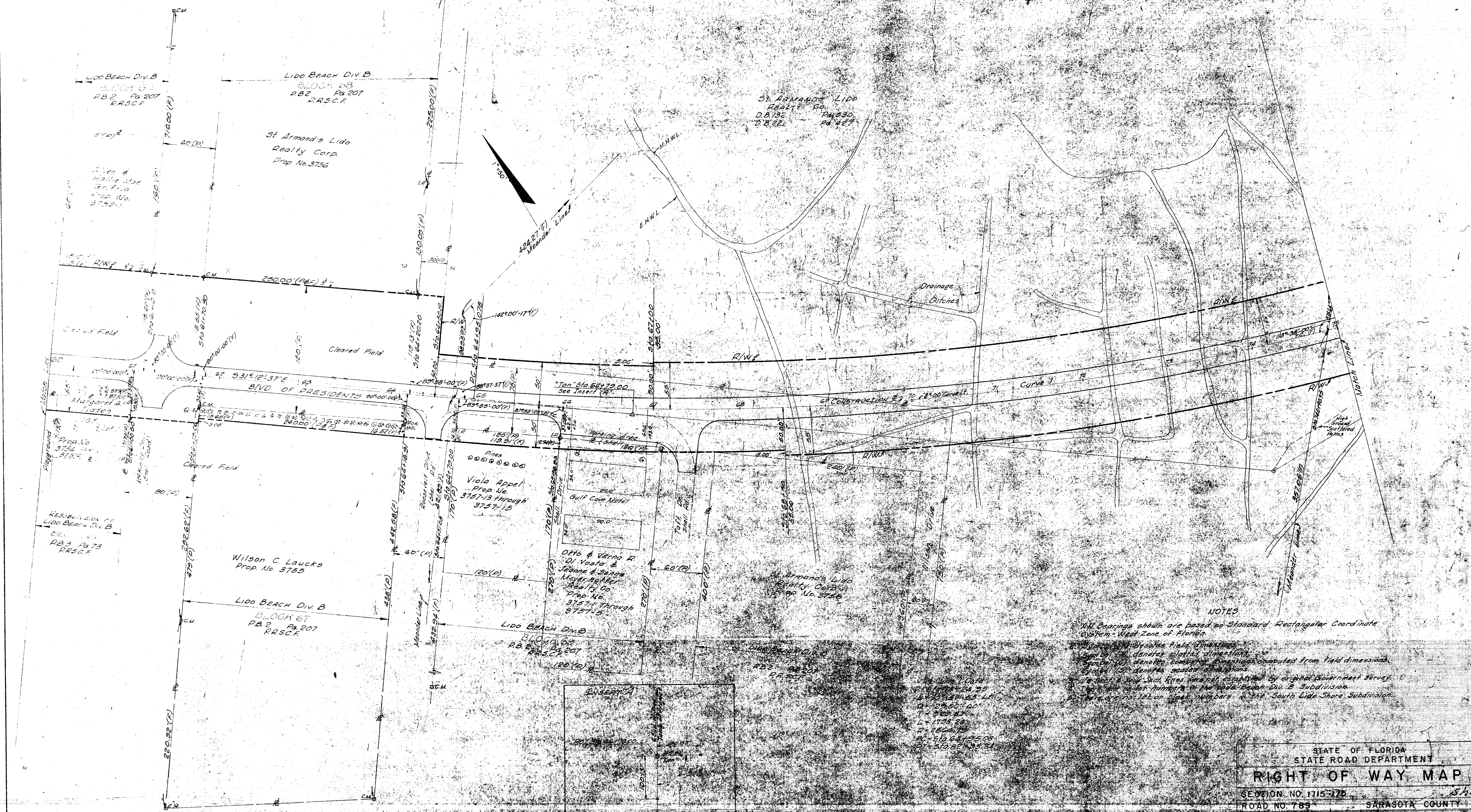
- Bearings shown are based on Standard Rectangular Coordinate System West Zone of Florida.
- Symbol (F) denotes field dimensions.
Symbol (P) denotes plotted dimensions.
Symbol (C) denotes computed dimensions, computed from field dimensions.
Symbol (S) denotes scaled dimensions.
- Construction north of northerly line of Cleveland Drive on the Blvd. of Presidents is for joining of existing Pave. only. No R/W required in this area.
- 1/2 Sect. & 1/4 Sect. lines were not established by original government survey.
- There are no lot numbers in the Lido Beach Div. B Subdivision.

CORRECT AS TO RIGHT OF WAY REQUIREMENTS
 M.N. QUADE, PARTNER DATE 7/21/56
 PARSONS, BRINCKERHOFF, HALL & MACDONALD

STATE OF FLORIDA STATE ROAD DEPARTMENT	
RIGHT OF WAY MAP	
SECTION NO. 1715-175	Sh. 2
ROAD NO. 789	SARASOTA COUNTY
SCALE: 1" = 50'	NAMES
DRAWN: L. A. P.	DATES: 4-26-56
INDEXED: A. A. B.	4-26-56
REVISOR:	
REVISION:	
APPROVED BY DIVISION ENGINEER STATE HIGHWAY ENGINEER	

FED. ROAD DIV. NO.	STATE	PROJECT NO.	FISCAL YEAR	SHEET NO.
3	FLA.	1715-175		3

535, 1365, RITE



NOTES

All bearings shown are based on Standard Rectangular Coordinate System - West Zone of Florida.
 1. Shows proposed field dimensions.
 2. Shows proposed plotted dimensions.
 3. Shows proposed computed dimensions computed from field dimensions.
 4. Shows proposed actual dimensions.
 5. Shows proposed established by original Government Survey.
 6. Shows proposed dimensions in the Lido Beach Div. B Subdivision.
 7. Shows proposed lot or street numbers in the South Lido Shore Subdivision.

1. 1715-175
 2. 1715-175
 3. 1715-175
 4. 1715-175
 5. 1715-175
 6. 1715-175
 7. 1715-175

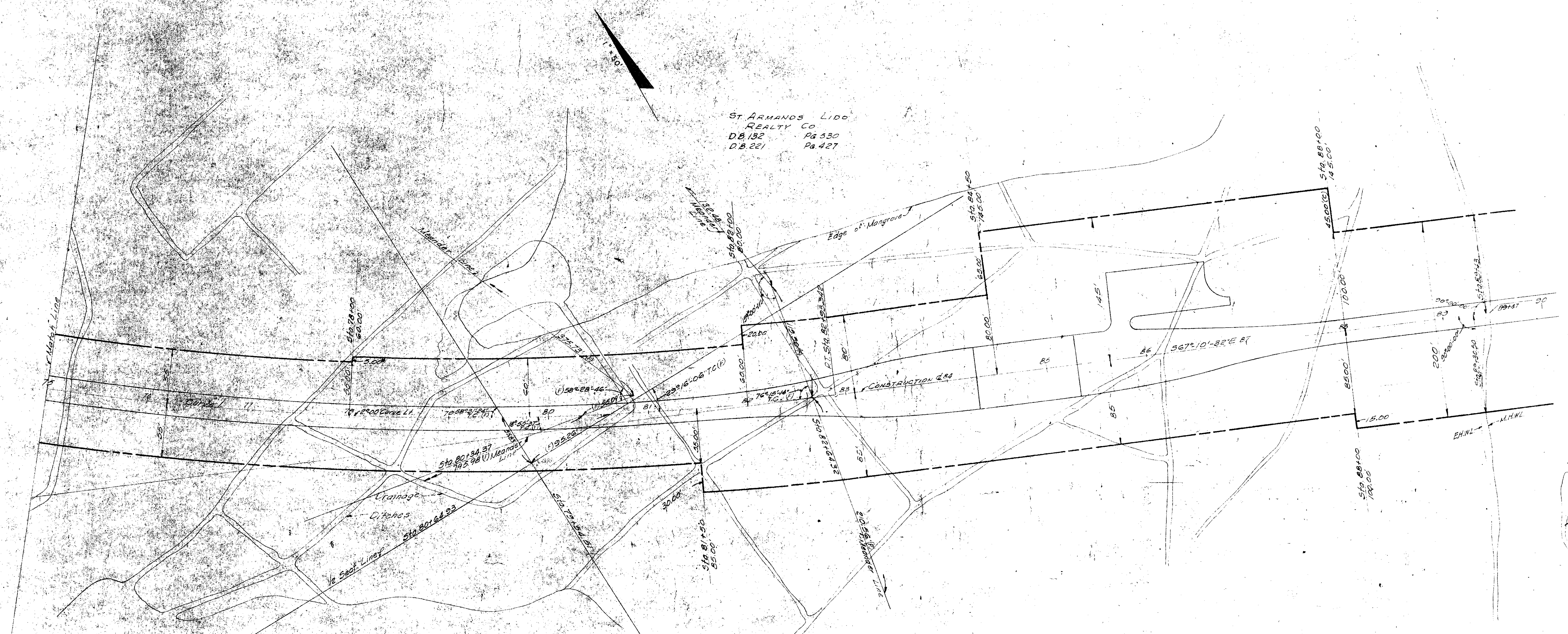
STATE OF FLORIDA
 STATE ROAD DEPARTMENT
RIGHT OF WAY MAP

SECTION NO. 1715-175		SARASOTA COUNTY	
ROAD NO. 789		APPROVED BY	
SCALE	DATE	DATE	
1" = 40'	4-26-56	4-26-56	
DRAWN	A.A.B.	DIVISION ENGINEER	
INDEXED		STATE HIGHWAY ENGINEER	
REVISED			
REVISED			

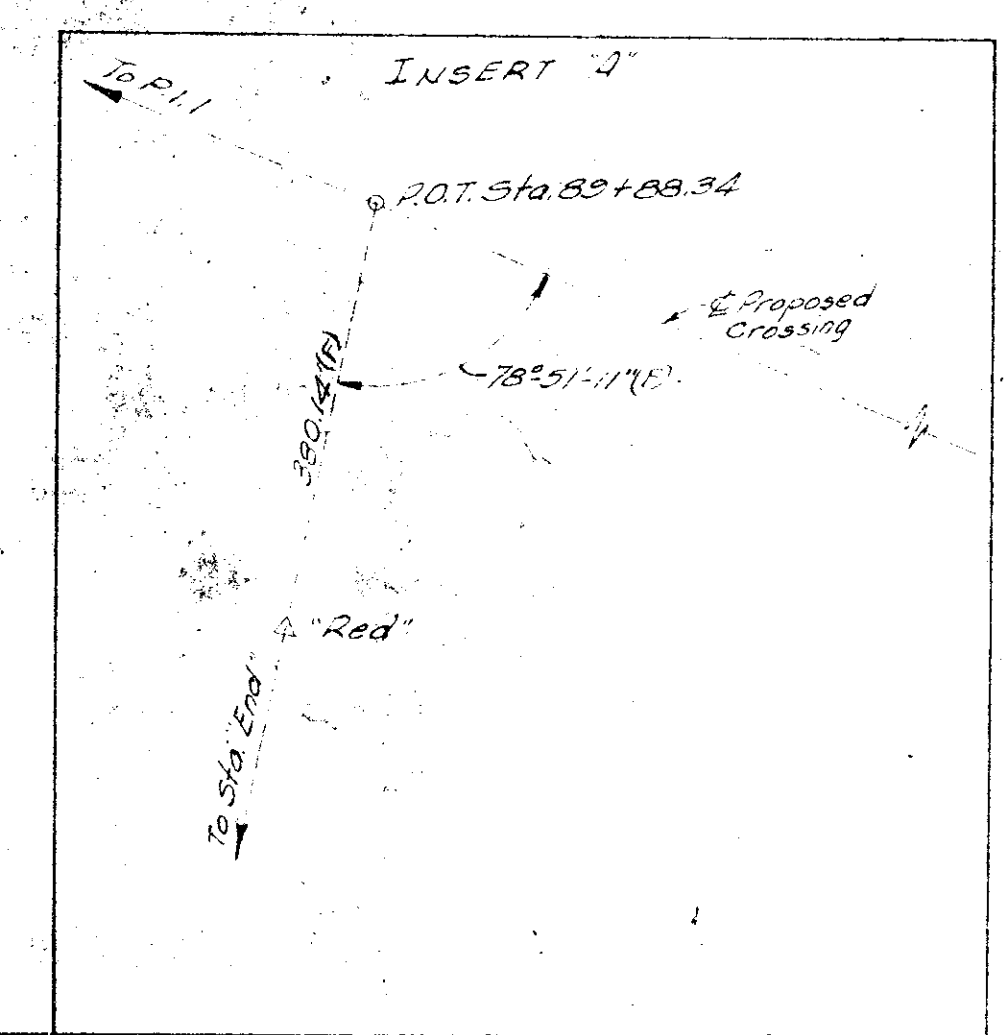
CORRECT AS TO RIGHT OF WAY REQUIREMENTS
 M.N. CHASE PARTNER
 PARSONS, BRINCKERHOFF, HALL & MACDONALD

535, T363, R17E

ST. ARMANDS LIDO
 REALTY CO.
 D.B. 132 Pg. 330
 D.B. 221 Pg. 427



Curve 1 Data
 P.I. Sta. 74+24.95
 $\Delta = 35^{\circ} 57' 53''$ L
 $D = 2^{\circ} 00' 00''$
 $T = 923.81'$
 $L = 1728.26'$
 $R = 2864.79'$
 P.C. Sta. 64+25.08
 P.T. Sta. 82+33.84



NOTES

- All bearings shown are based on Standard Rectangular Coordinate System - West Zone of Florida.
- Symbol (F) denotes field dimensions.
 Symbol (P) denotes plotted dimensions.
 Symbol (C) denotes computed dimensions, computed from field dimensions.
 Symbol (S) denotes scaled dimensions.
- 1/2 Sect. & 1/4 Sect. lines were not established by original Government survey.
- There are no lot or block numbers in the South Lido Shore Subdivision.

CORRECT AS TO RIGHT OF WAY REQUIREMENTS
 M. N. QUADE, PARTNER DATE 4/26/56
 PARSONS, BRINCKERHOFF, HALL & MACDONALD

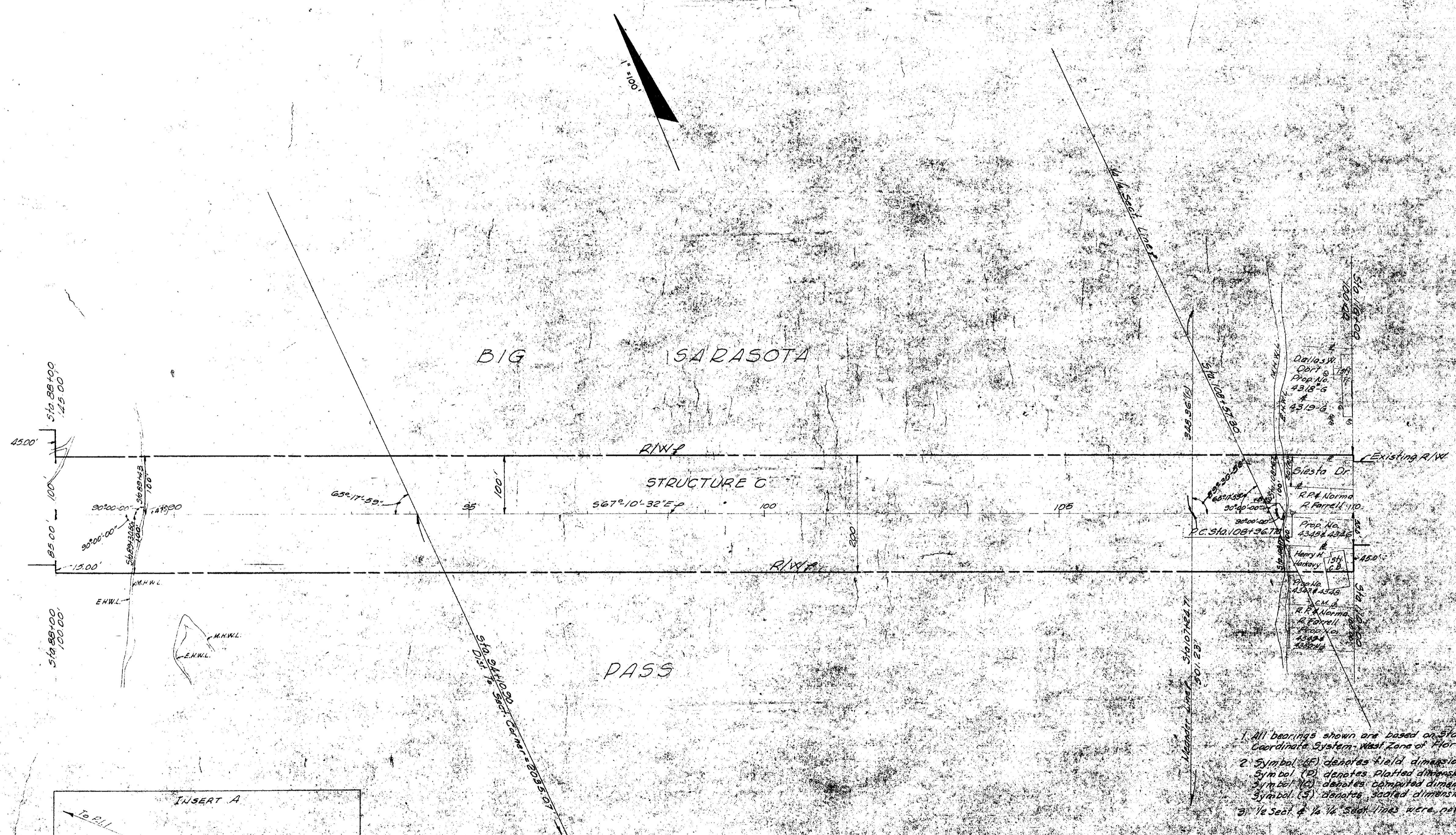
STATE OF FLORIDA
 STATE ROAD DEPARTMENT

RIGHT OF WAY MAP

SECTION NO. 1115-175
 ROAD NO. 789 SARASOTA COUNTY
 SCALE: 1" = 50' LAMES DATES APPROVED BY
 DRAWN L.A.P. 4-26-56
 TRACED A.A.B. 4-26-56 S. M. Johnson DIVISION ENGINEER
 INDEXED
 REVISED STATE HIGHWAY ENGINEER

FED. ROAD DIV. NO.	STATE	PROJECT NO.	FISCAL YEAR	SHEET NO.
3	FLA.	1715-175		5

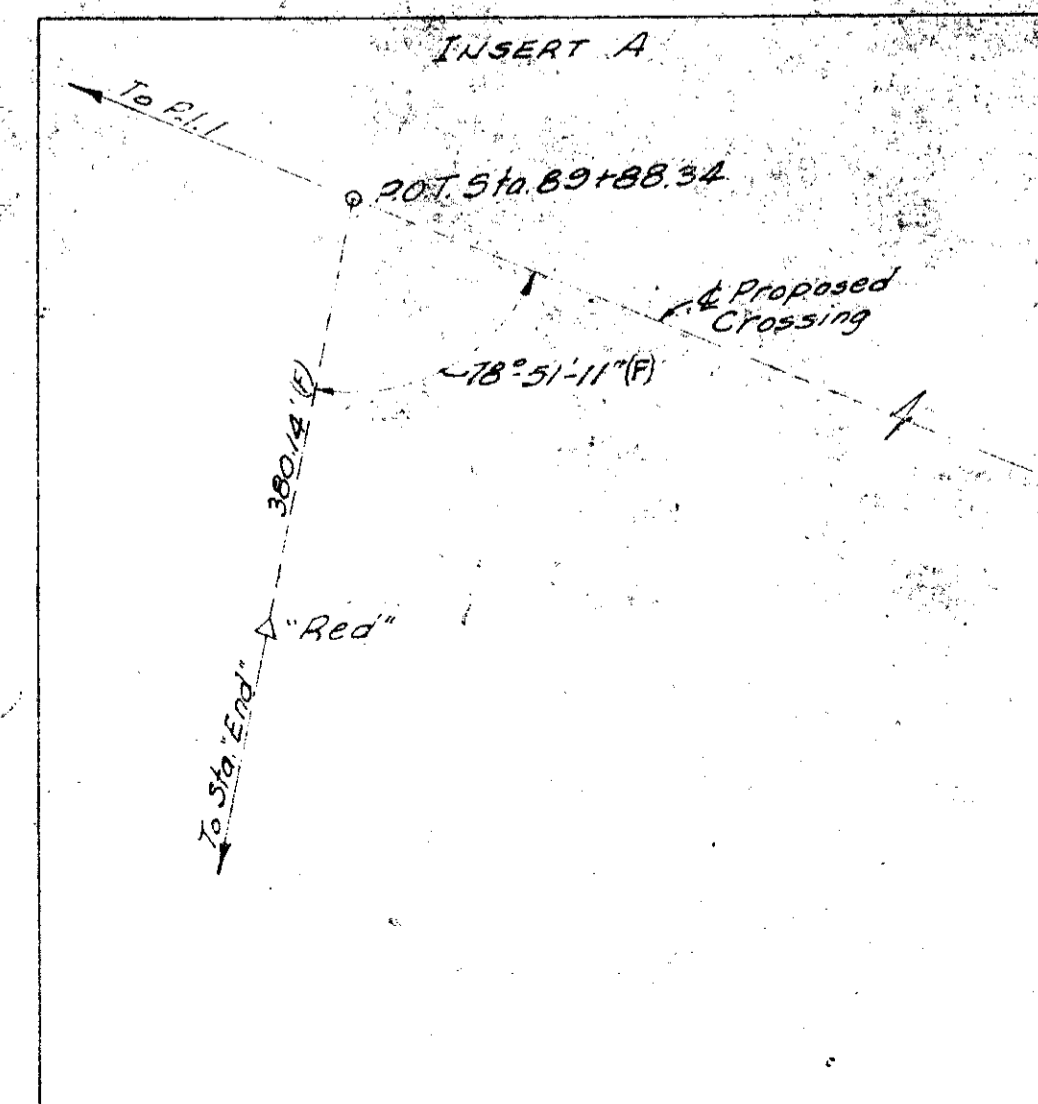
T365, SITE



Dallas Dr
 Prop. No. 4318-G
 4319-G
 R.P. Norma R. Farrell
 Prop. No. 4348-G
 Henry H. St. Anthony
 R.P. Norma R. Farrell
 R.P. Norma R. Farrell
 R.P. Norma R. Farrell

Curve Data
 2
 P.I. Sta. 110+96.85
 $\Delta = 4^{\circ}00'00''$
 $D = 1^{\circ}00'00''$
 $T = 200.08'$
 $L = 100.00'$
 $R = 5729.58'$
 P.C. Sta. 108+96.77
 P.T. Sta. 112+96.77

- 1. All bearings shown are based on Standard Rectangular Coordinate System - West Zone of Florida.
- 2. Symbol (SF) denotes field dimensions.
- Symbol (D) denotes plotted dimensions.
- Symbol (C) denotes computed dimensions from field dimensions.
- Symbol (S) denotes scaled dimensions.
- 3. 1/4" and 1/8" scale lines were not established by original govt. survey.



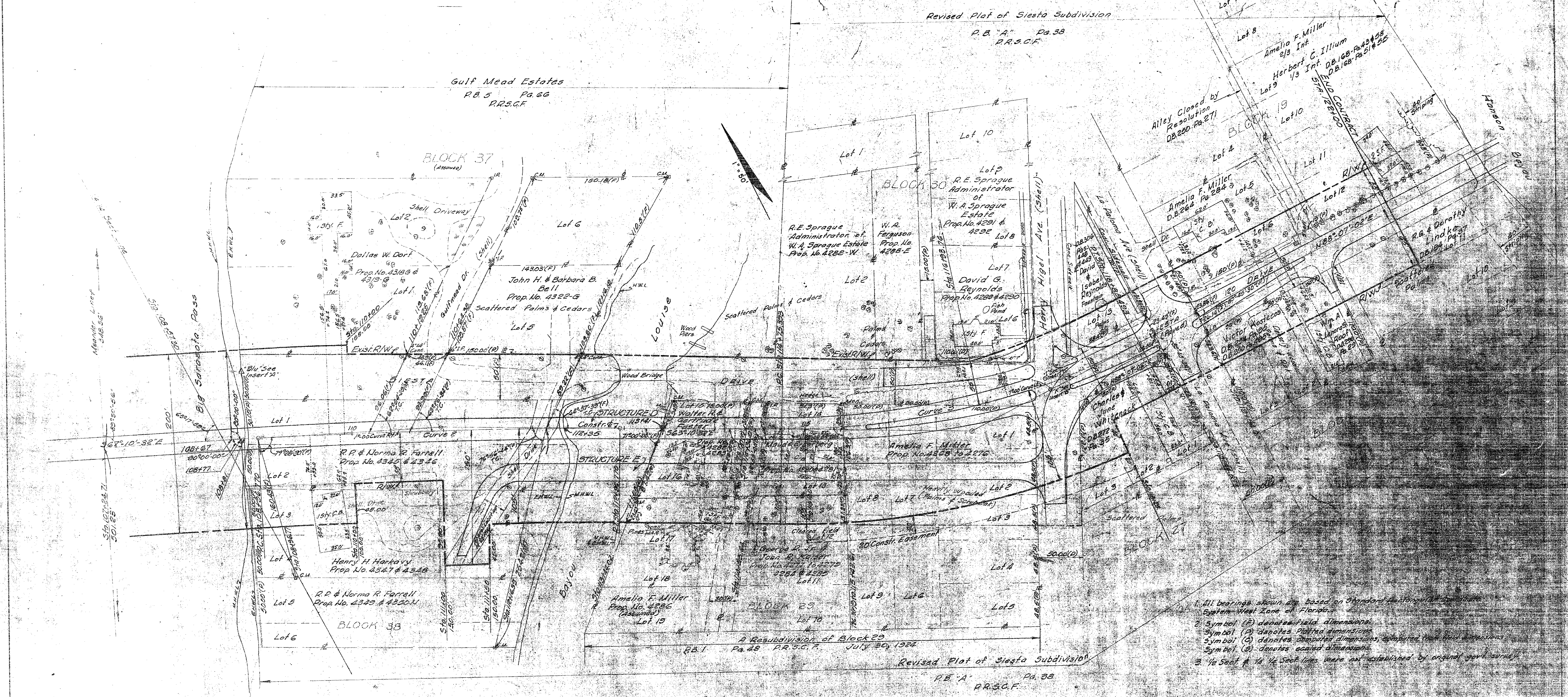
Theoretic Section Corner by Govt. Notes.

CORRECT AS TO RIGHT OF WAY REQUIREMENTS
 M. N. QUADE, PARTNER
 PARSONS, BRINCKERHOFF, HALL & MACDONALD

STATE OF FLORIDA STATE ROAD DEPARTMENT			
RIGHT OF WAY MAP			
SECTION NO. 1715-175		Sh. 5	
ROAD NO. 789		SARASOTA COUNTY	
SCALE: 1"=100'	NAMES	DATES	APPROVED BY
DRAWN	L.A.P.	4-26-56	D. M. Johnson DIVISION ENGINEER
TRACED	A.A.B.	4-26-56	
INDEXED			
REVISED			
REVISED			STATE HIGHWAY ENGINEER

FED. ROAD DIV. NO.	STATE	PROJECT NO.	FISCAL SHEET NO.
3	FLA.	1715-175	6

536, T363, R17E



- All bearings shown are based on Standard Meridian and Florida State Plane West Zone of Florida.
- Symbol (P) denotes field dimensions.
- Symbol (R) denotes plotted dimensions.
- Symbol (S) denotes computed dimensions, computed from field dimensions.
- Symbol (C) denotes curved dimensions.
- 1/4 Section 14 & 1/4 Section 15 were not established by original work shown.

CURVE DATA

1	2	3
PI Sta. 110+36.85	PI Sta. 116+84.84	PI Sta. 116+84.84
L = 4°-00'-00" RT	L = 28°-22'-26" LT	L = 28°-22'-26" LT
D = 1°-00'-00"	D = 7°-00'-00"	D = 7°-00'-00"
T = 200.08'	T = 203.45'	T = 203.45'
L = 400.00'	L = 410.10'	L = 410.10'
PC Sta. 108+36.77	PC Sta. 114+75.33	PC Sta. 114+75.33
PT Sta. 112+36.77	PT Sta. 118+36.77	PT Sta. 118+36.77

CORRECT AS TO RIGHT OF WAY REQUIREMENTS
 IF IN QUAD PARTNER
 PARSONS, BRINCKERHOFF, HALL & MACDONALD

STATE OF FLORIDA
 STATE ROAD DEPARTMENT

RIGHT OF WAY MAP

SECTION NO. 1715-175
 ROAD NO. 789

SCALE	DATE	APPROVED BY
DRAWN	L.A.P.	4-25-56
TRACED	A.A.B.	4-25-56
INDEXED		
REVISED		
REVISED		

