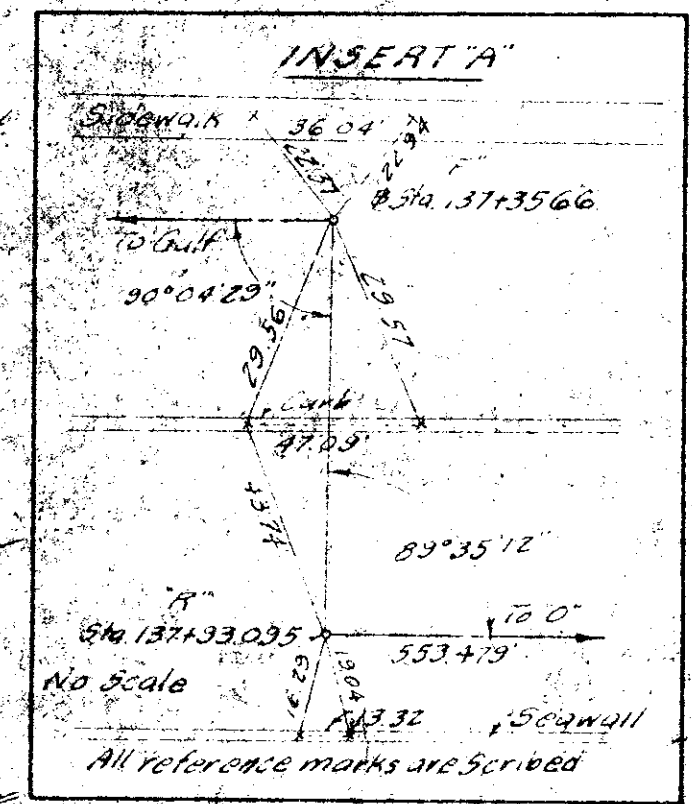
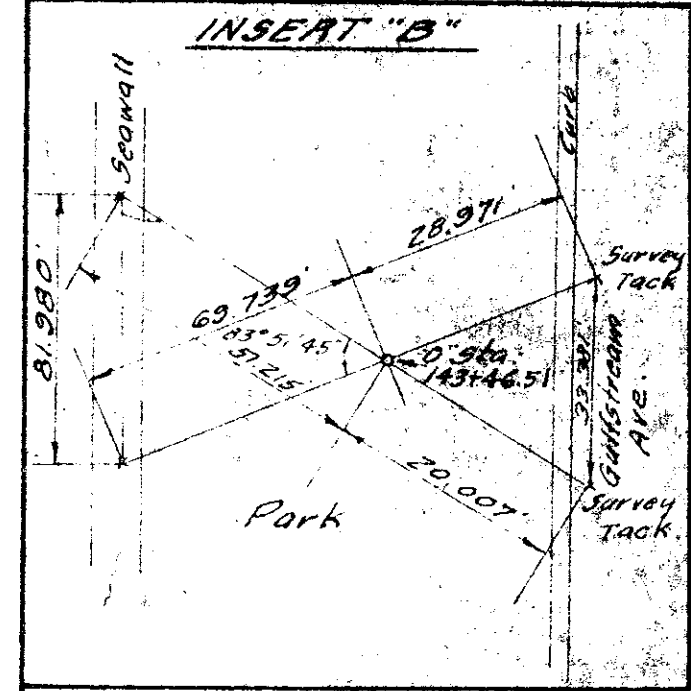
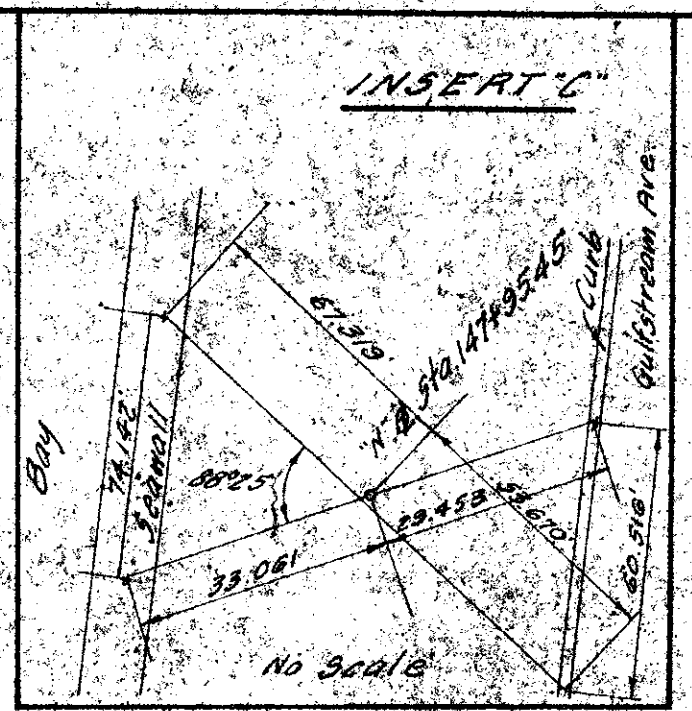
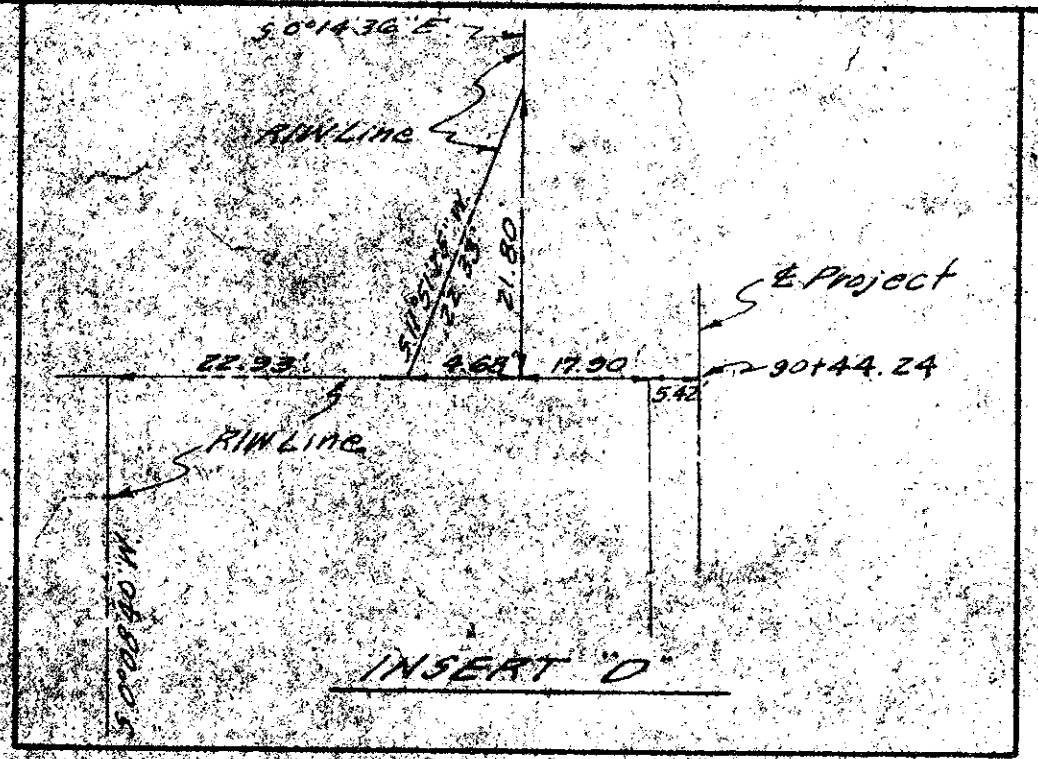
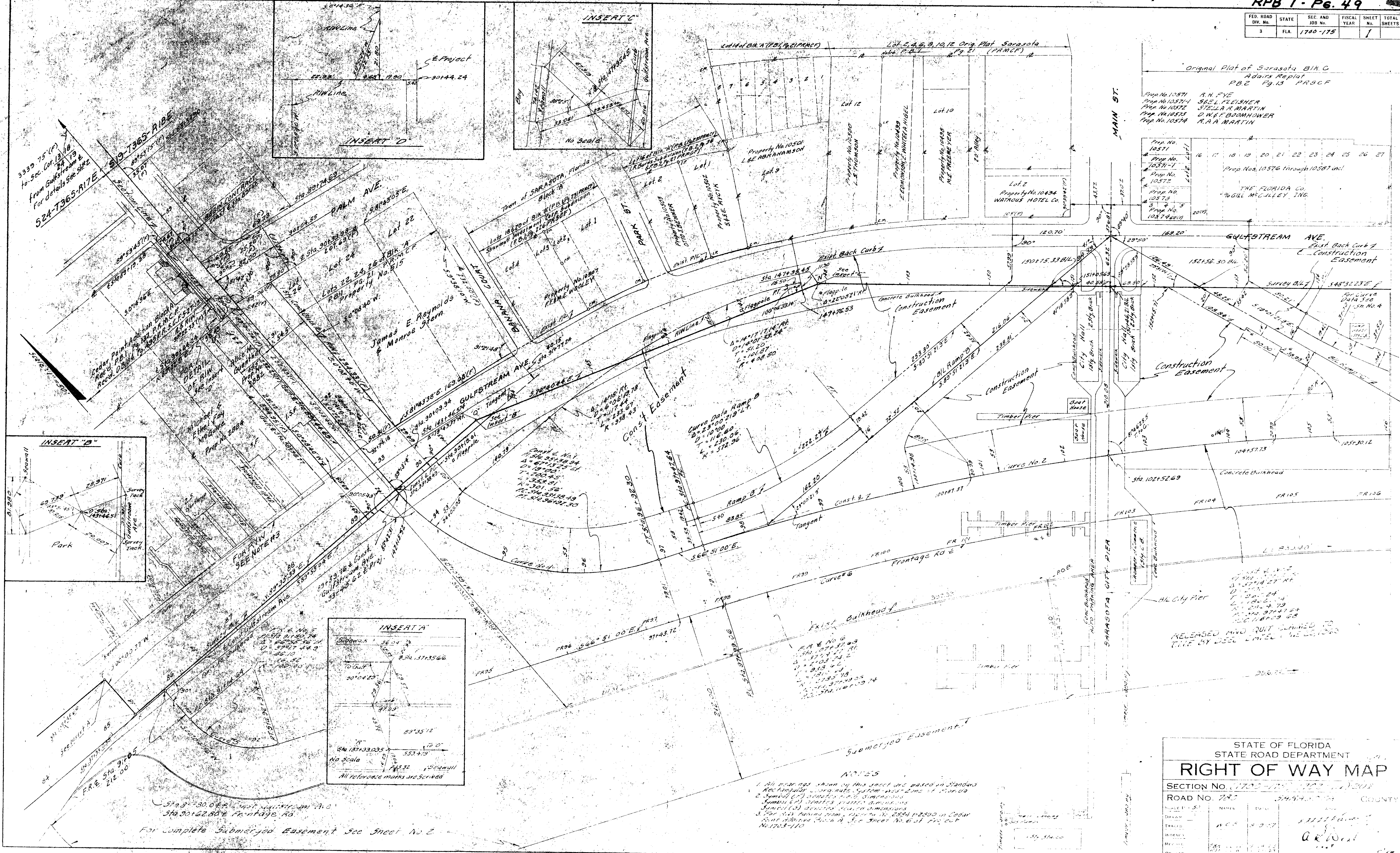


FED. ROAD DIV. No.	STATE	SEC. AND JOB No.	FISCAL YEAR	SHEET No.	TOTAL SHEETS
3	FLA.	1780-175		7	



Original Plot of Sarasota Bk. C  
Adairs Replat  
P.B.C. Pg. 13 P.A.S.C.F.

Prop. No. 10571	A.H. FYE
Prop. No. 10571-1	STELLA FLEISHER
Prop. No. 10572	STELLA R. MARTIN
Prop. No. 10573	D.W.F. BOOMHOWER
Prop. No. 10574	M.A. MARTIN

Prop. No. 10571	16
Prop. No. 10571-1	17
Prop. No. 10572	18
Prop. No. 10573	19
Prop. No. 10574	20
Prop. No. 10574 (REV.)	21
	22
	23
	24
	25
	26
	27

Prep. Nos. 10576 through 10587 incl.  
THE FLORIDA CO.  
% GILL McCULLEY, INC.

- NOTES
- All bearings shown on this sheet are based on Standard Rectangular Coordinate System west zone of 1850.00
  - Survey (S) denotes vertical dimensions
  - Survey (S) denotes horizontal dimensions
  - For all bearings from Property No. 2084-1-2890 in Color Cont. Adairs Replat of Sec. Street No. 6 of 170 out No. 1705-110

STATE OF FLORIDA  
STATE ROAD DEPARTMENT

## RIGHT OF WAY MAP

SECTION No. 1780-175-175 (REV.) 3018

ROAD No. 782 34.974 COUNTY

DATE	NAME	DATE
DRAWN		
TRACED	A.C.F.	4-9-57
INDEXED		
REVISED		
BY		

A. R. WOOD

Sta. 9170.00 to Sta. 9175.00  
Sta. 9175.00 to Sta. 9180.00  
Sta. 9180.00 to Sta. 9185.00  
Sta. 9185.00 to Sta. 9190.00  
Sta. 9190.00 to Sta. 9195.00  
Sta. 9195.00 to Sta. 9200.00  
Sta. 9200.00 to Sta. 9205.00  
Sta. 9205.00 to Sta. 9210.00  
Sta. 9210.00 to Sta. 9215.00  
Sta. 9215.00 to Sta. 9220.00  
Sta. 9220.00 to Sta. 9225.00  
Sta. 9225.00 to Sta. 9230.00  
Sta. 9230.00 to Sta. 9235.00  
Sta. 9235.00 to Sta. 9240.00  
Sta. 9240.00 to Sta. 9245.00  
Sta. 9245.00 to Sta. 9250.00  
Sta. 9250.00 to Sta. 9255.00  
Sta. 9255.00 to Sta. 9260.00  
Sta. 9260.00 to Sta. 9265.00  
Sta. 9265.00 to Sta. 9270.00  
Sta. 9270.00 to Sta. 9275.00  
Sta. 9275.00 to Sta. 9280.00  
Sta. 9280.00 to Sta. 9285.00  
Sta. 9285.00 to Sta. 9290.00  
Sta. 9290.00 to Sta. 9295.00  
Sta. 9295.00 to Sta. 9300.00  
Sta. 9300.00 to Sta. 9305.00  
Sta. 9305.00 to Sta. 9310.00  
Sta. 9310.00 to Sta. 9315.00  
Sta. 9315.00 to Sta. 9320.00  
Sta. 9320.00 to Sta. 9325.00  
Sta. 9325.00 to Sta. 9330.00  
Sta. 9330.00 to Sta. 9335.00  
Sta. 9335.00 to Sta. 9340.00  
Sta. 9340.00 to Sta. 9345.00  
Sta. 9345.00 to Sta. 9350.00  
Sta. 9350.00 to Sta. 9355.00  
Sta. 9355.00 to Sta. 9360.00  
Sta. 9360.00 to Sta. 9365.00  
Sta. 9365.00 to Sta. 9370.00  
Sta. 9370.00 to Sta. 9375.00  
Sta. 9375.00 to Sta. 9380.00  
Sta. 9380.00 to Sta. 9385.00  
Sta. 9385.00 to Sta. 9390.00  
Sta. 9390.00 to Sta. 9395.00  
Sta. 9395.00 to Sta. 9400.00  
Sta. 9400.00 to Sta. 9405.00  
Sta. 9405.00 to Sta. 9410.00  
Sta. 9410.00 to Sta. 9415.00  
Sta. 9415.00 to Sta. 9420.00  
Sta. 9420.00 to Sta. 9425.00  
Sta. 9425.00 to Sta. 9430.00  
Sta. 9430.00 to Sta. 9435.00  
Sta. 9435.00 to Sta. 9440.00  
Sta. 9440.00 to Sta. 9445.00  
Sta. 9445.00 to Sta. 9450.00  
Sta. 9450.00 to Sta. 9455.00  
Sta. 9455.00 to Sta. 9460.00  
Sta. 9460.00 to Sta. 9465.00  
Sta. 9465.00 to Sta. 9470.00  
Sta. 9470.00 to Sta. 9475.00  
Sta. 9475.00 to Sta. 9480.00  
Sta. 9480.00 to Sta. 9485.00  
Sta. 9485.00 to Sta. 9490.00  
Sta. 9490.00 to Sta. 9495.00  
Sta. 9495.00 to Sta. 9500.00  
Sta. 9500.00 to Sta. 9505.00  
Sta. 9505.00 to Sta. 9510.00  
Sta. 9510.00 to Sta. 9515.00  
Sta. 9515.00 to Sta. 9520.00  
Sta. 9520.00 to Sta. 9525.00  
Sta. 9525.00 to Sta. 9530.00  
Sta. 9530.00 to Sta. 9535.00  
Sta. 9535.00 to Sta. 9540.00  
Sta. 9540.00 to Sta. 9545.00  
Sta. 9545.00 to Sta. 9550.00  
Sta. 9550.00 to Sta. 9555.00  
Sta. 9555.00 to Sta. 9560.00  
Sta. 9560.00 to Sta. 9565.00  
Sta. 9565.00 to Sta. 9570.00  
Sta. 9570.00 to Sta. 9575.00  
Sta. 9575.00 to Sta. 9580.00  
Sta. 9580.00 to Sta. 9585.00  
Sta. 9585.00 to Sta. 9590.00  
Sta. 9590.00 to Sta. 9595.00  
Sta. 9595.00 to Sta. 9600.00  
Sta. 9600.00 to Sta. 9605.00  
Sta. 9605.00 to Sta. 9610.00  
Sta. 9610.00 to Sta. 9615.00  
Sta. 9615.00 to Sta. 9620.00  
Sta. 9620.00 to Sta. 9625.00  
Sta. 9625.00 to Sta. 9630.00  
Sta. 9630.00 to Sta. 9635.00  
Sta. 9635.00 to Sta. 9640.00  
Sta. 9640.00 to Sta. 9645.00  
Sta. 9645.00 to Sta. 9650.00  
Sta. 9650.00 to Sta. 9655.00  
Sta. 9655.00 to Sta. 9660.00  
Sta. 9660.00 to Sta. 9665.00  
Sta. 9665.00 to Sta. 9670.00  
Sta. 9670.00 to Sta. 9675.00  
Sta. 9675.00 to Sta. 9680.00  
Sta. 9680.00 to Sta. 9685.00  
Sta. 9685.00 to Sta. 9690.00  
Sta. 9690.00 to Sta. 9695.00  
Sta. 9695.00 to Sta. 9700.00  
Sta. 9700.00 to Sta. 9705.00  
Sta. 9705.00 to Sta. 9710.00  
Sta. 9710.00 to Sta. 9715.00  
Sta. 9715.00 to Sta. 9720.00  
Sta. 9720.00 to Sta. 9725.00  
Sta. 9725.00 to Sta. 9730.00  
Sta. 9730.00 to Sta. 9735.00  
Sta. 9735.00 to Sta. 9740.00  
Sta. 9740.00 to Sta. 9745.00  
Sta. 9745.00 to Sta. 9750.00  
Sta. 9750.00 to Sta. 9755.00  
Sta. 9755.00 to Sta. 9760.00  
Sta. 9760.00 to Sta. 9765.00  
Sta. 9765.00 to Sta. 9770.00  
Sta. 9770.00 to Sta. 9775.00  
Sta. 9775.00 to Sta. 9780.00  
Sta. 9780.00 to Sta. 9785.00  
Sta. 9785.00 to Sta. 9790.00  
Sta. 9790.00 to Sta. 9795.00  
Sta. 9795.00 to Sta. 9800.00  
Sta. 9800.00 to Sta. 9805.00  
Sta. 9805.00 to Sta. 9810.00  
Sta. 9810.00 to Sta. 9815.00  
Sta. 9815.00 to Sta. 9820.00  
Sta. 9820.00 to Sta. 9825.00  
Sta. 9825.00 to Sta. 9830.00  
Sta. 9830.00 to Sta. 9835.00  
Sta. 9835.00 to Sta. 9840.00  
Sta. 9840.00 to Sta. 9845.00  
Sta. 9845.00 to Sta. 9850.00  
Sta. 9850.00 to Sta. 9855.00  
Sta. 9855.00 to Sta. 9860.00  
Sta. 9860.00 to Sta. 9865.00  
Sta. 9865.00 to Sta. 9870.00  
Sta. 9870.00 to Sta. 9875.00  
Sta. 9875.00 to Sta. 9880.00  
Sta. 9880.00 to Sta. 9885.00  
Sta. 9885.00 to Sta. 9890.00  
Sta. 9890.00 to Sta. 9895.00  
Sta. 9895.00 to Sta. 9900.00  
Sta. 9900.00 to Sta. 9905.00  
Sta. 9905.00 to Sta. 9910.00  
Sta. 9910.00 to Sta. 9915.00  
Sta. 9915.00 to Sta. 9920.00  
Sta. 9920.00 to Sta. 9925.00  
Sta. 9925.00 to Sta. 9930.00  
Sta. 9930.00 to Sta. 9935.00  
Sta. 9935.00 to Sta. 9940.00  
Sta. 9940.00 to Sta. 9945.00  
Sta. 9945.00 to Sta. 9950.00  
Sta. 9950.00 to Sta. 9955.00  
Sta. 9955.00 to Sta. 9960.00  
Sta. 9960.00 to Sta. 9965.00  
Sta. 9965.00 to Sta. 9970.00  
Sta. 9970.00 to Sta. 9975.00  
Sta. 9975.00 to Sta. 9980.00  
Sta. 9980.00 to Sta. 9985.00  
Sta. 9985.00 to Sta. 9990.00  
Sta. 9990.00 to Sta. 9995.00  
Sta. 9995.00 to Sta. 10000.00

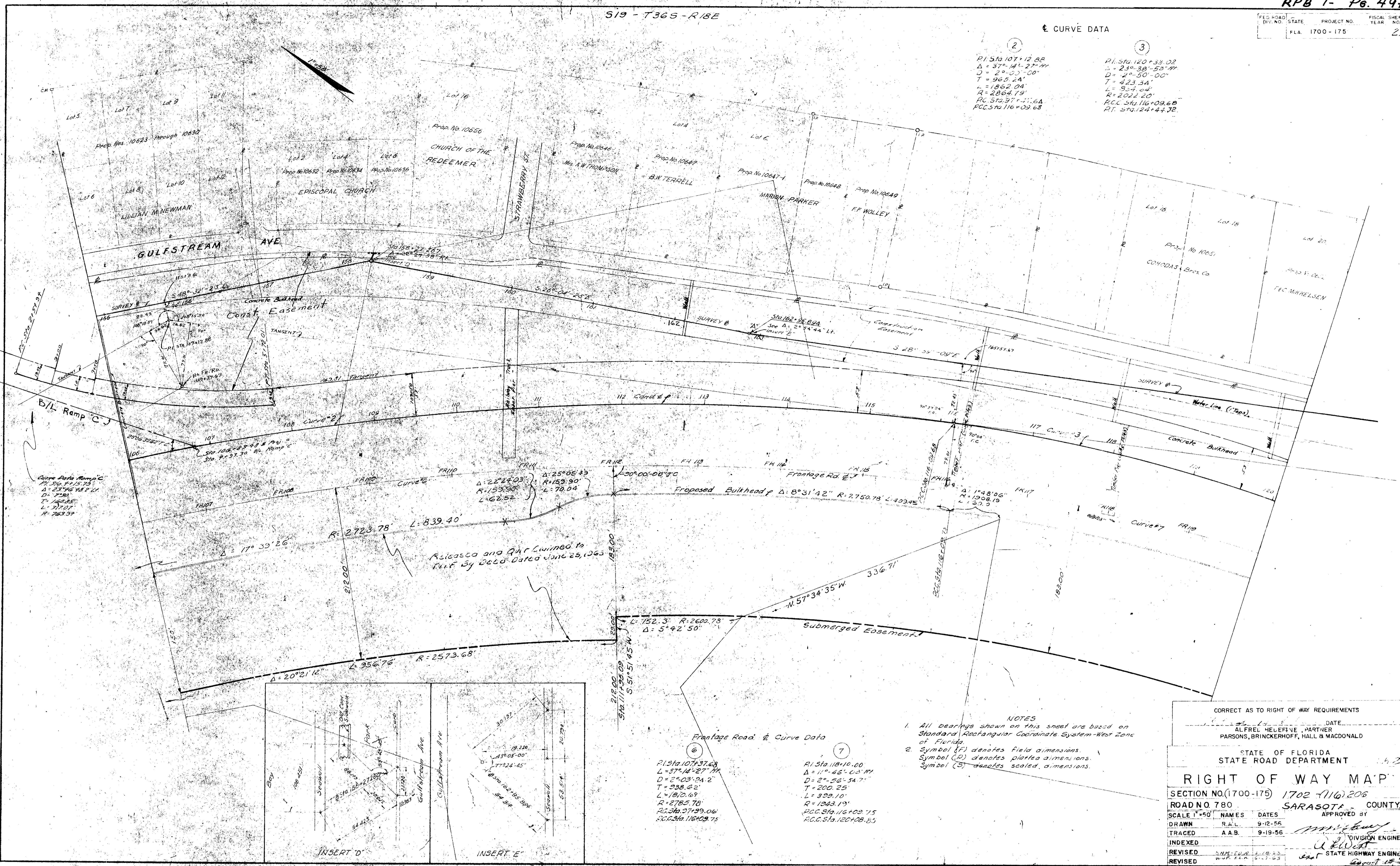
519 - T365 - R18E

CURVE DATA

FED. ROAD DIV. NO.	STATE	PROJECT NO.	FISCAL SHEET YEAR NO.
FLA.	1700-175		2

②  
 P.I. Sta. 107+12.89  
 $\Delta = 37^{\circ} 14' 27''$   
 $D = 2^{\circ} 53' 00''$   
 $T = 965.24'$   
 $L = 1862.04'$   
 $R = 2864.19'$   
 P.C. Sta. 116+09.68  
 P.C.C. Sta. 116+09.68

③  
 P.I. Sta. 120+33.02  
 $\Delta = 23^{\circ} 38' 53''$   
 $D = 2^{\circ} 50' 00''$   
 $T = 423.34'$   
 $L = 824.04'$   
 $R = 2022.20'$   
 P.C. Sta. 116+09.68  
 P.T. Sta. 124+44.32



Curve Data Ramp C  
 P.I. Sta. 106+54.88  
 $\Delta = 23^{\circ} 46' 48''$   
 $D = 2^{\circ} 58'$   
 $T = 168.85'$   
 $L = 337.07'$   
 $R = 763.39'$

Sta. 106+54.88 P.I.  
 Sta. 109+33.30 B/L Ramp C

Curve 6  
 $\Delta = 22^{\circ} 44' 03''$   
 $R = 153.90'$   
 $L = 62.52'$

Curve 7  
 $\Delta = 25^{\circ} 05' 43''$   
 $R = 153.90'$   
 $L = 70.04'$

Release and Qnt. Granted to  
 F.R.F. by Deed Dated June 25, 1963

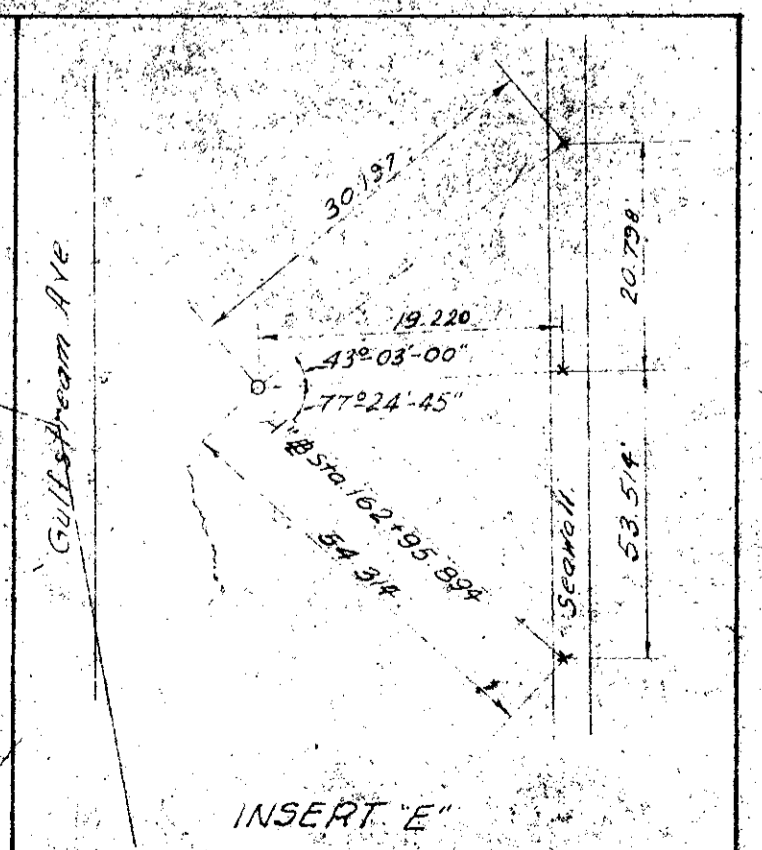
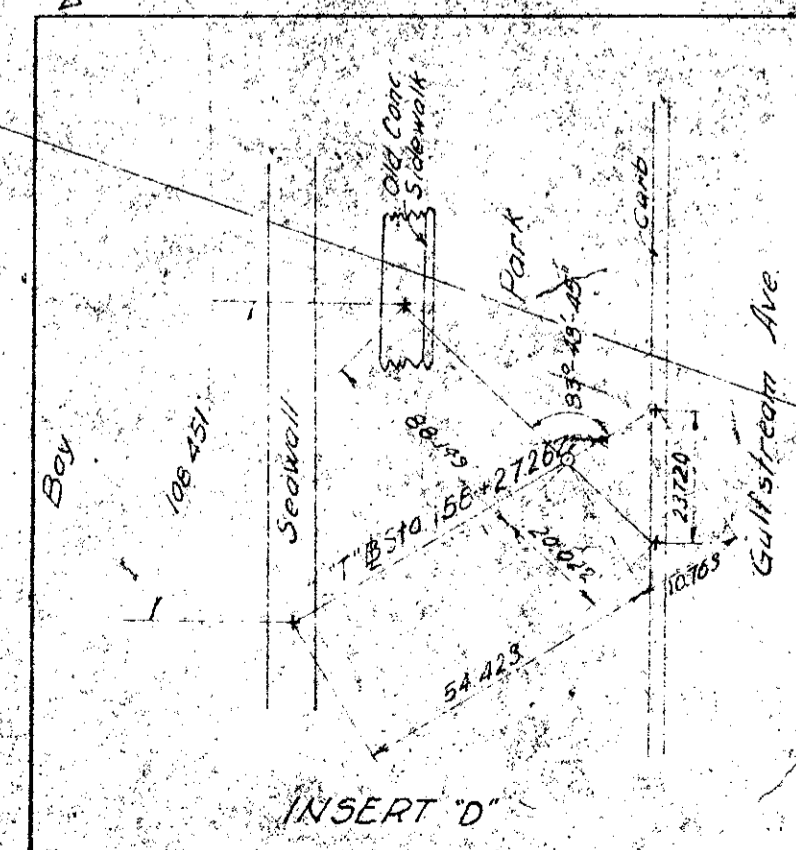
Submerged Easement  
 $\Delta = 5^{\circ} 42' 50''$   
 $L = 152.3'$   
 $R = 2600.78'$

Frontage Road & Curve Data

⑥  
 P.I. Sta. 107+37.68  
 $\Delta = 37^{\circ} 14' 27''$   
 $D = 2^{\circ} 03' 24''$   
 $T = 238.62'$   
 $L = 1810.69'$   
 $R = 2785.78'$   
 P.C. Sta. 116+09.06  
 P.C.C. Sta. 116+09.75

⑦  
 P.I. Sta. 118+10.00  
 $\Delta = 11^{\circ} 46' 03''$   
 $D = 2^{\circ} 56' 34''$   
 $T = 200.25'$   
 $L = 399.10'$   
 $R = 1343.19'$   
 P.C. Sta. 116+09.75  
 P.C.C. Sta. 120+08.85

- NOTES
- All bearings shown on this sheet are based on Standard Rectangular Coordinate System - West Zone of Florida.
  - Symbol (F) denotes field dimensions.
  - Symbol (D) denotes plattee dimensions.
  - Symbol (S) denotes scaled dimensions.



CORRECT AS TO RIGHT OF WAY REQUIREMENTS

DATE: 9-19-56

ALFRED HELEFINE, PARTNER  
 PARSONS, BRINCKERHOFF, HALL & MACDONALD

STATE OF FLORIDA  
 STATE ROAD DEPARTMENT

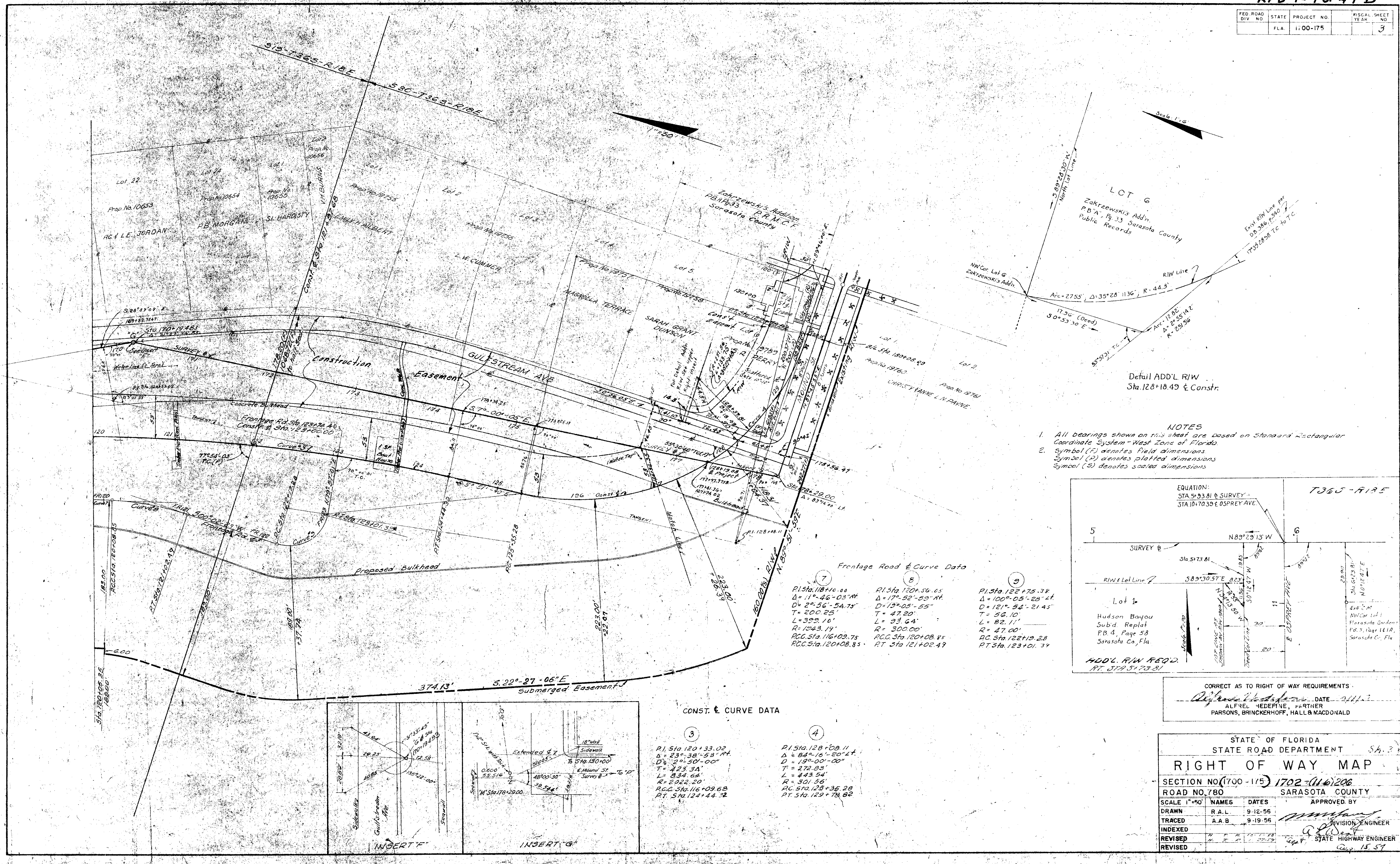
**RIGHT OF WAY MAP**

SECTION NO. (1700-175) 1702 (116) 206  
 ROAD NO. 780 SARASOTA COUNTY

SCALE	1"=50'	NAMES	DATES	APPROVED BY
DRAWN	R.A.L.		9-12-56	
TRACED	A.A.B.		9-19-56	
INDEXED				
REVISED	S.M.C.W.		1-19-53	
REVISED	M.S.P.		5-7-53	

DIVISION ENGINEER  
 STATE HIGHWAY ENGINEER

FED. ROAD DIV. NO.	STATE	PROJECT NO.	FISCAL SHEET NO.
	FLA.	1,00-175	3



Scale 1" = 60'

Detail ADD'L R/W  
Sta. 128+18.49 & Const.

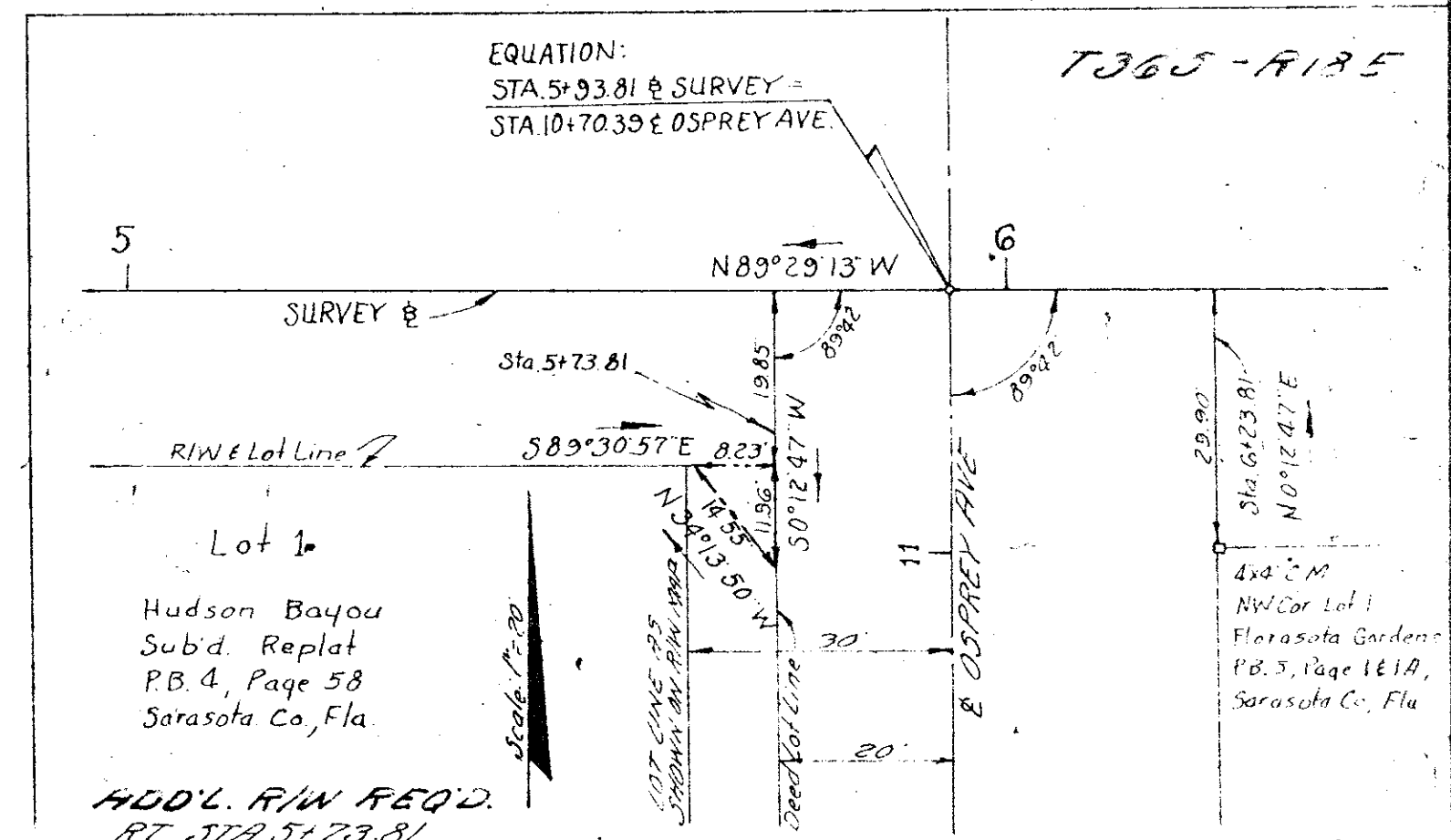
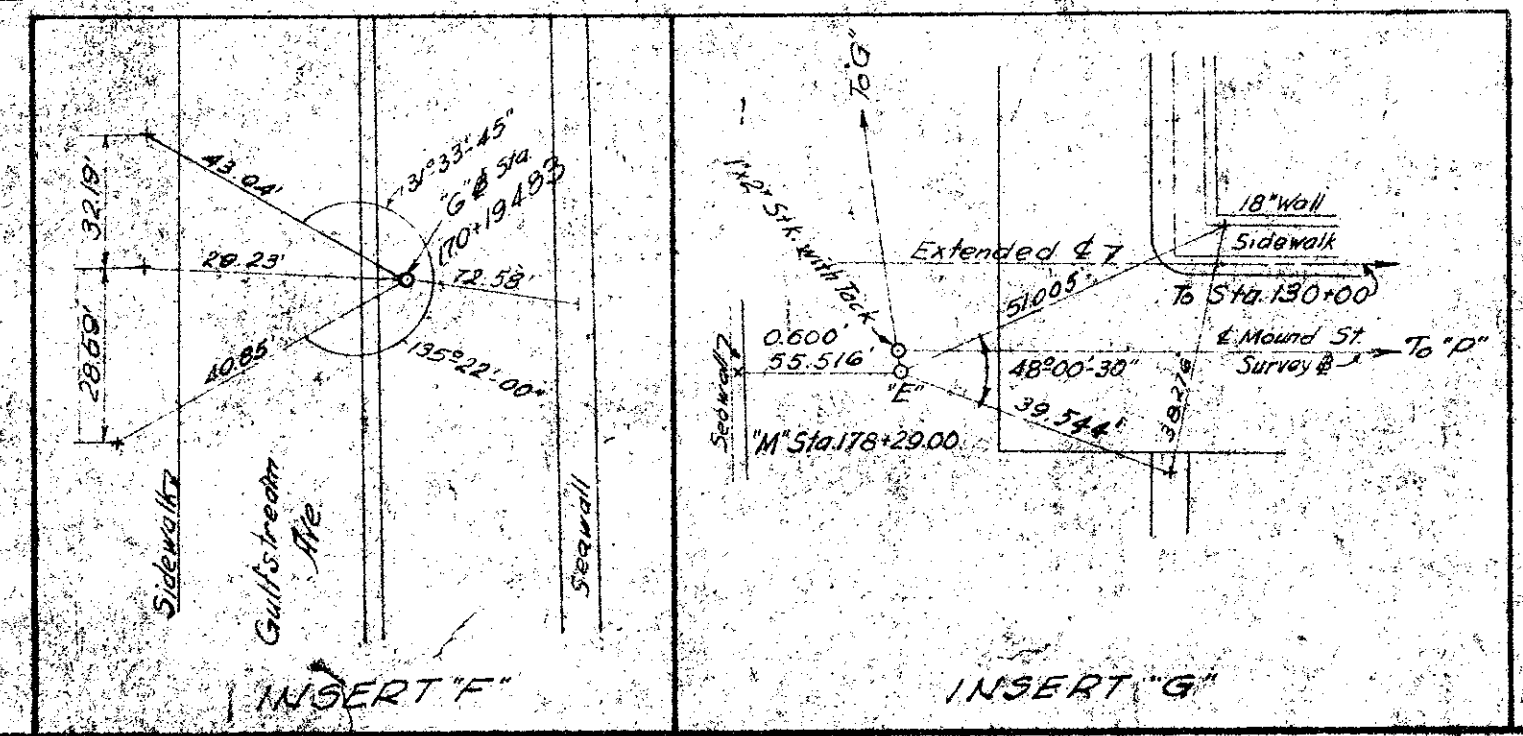
- NOTES
- All bearings shown on this sheet are based on Standard Rectangular Coordinate System - West Zone of Florida.
  - Symbol (F) denotes field dimensions
  - Symbol (P) denotes plotted dimensions
  - Symbol (S) denotes scaled dimensions

Frontage Road & Curve Data

Station	PI	Δ	D	T	L	R	PCG	PT
118+10.00	120+34.65	17° 52' 59" N	13° 05' 55"	47.20'	33.64'	300.00'	120+08.85	121+02.49
122+75.38	123+01.34	100° 05' 28" E	121° 54' 21.45"	56.10'	82.11'	47.00'	122+19.28	123+01.34

CONST. & CURVE DATA

Station	PI	Δ	D	T	L	R	PCG	PT
120+33.02	128+08.11	23° 38' 53" N	2° 50' 00"	423.34'	834.64'	2022.20'	116+09.68	124+44.92
128+08.11	129+78.62	84° 16' 20" E	190° 00' 00"	272.83'	443.54'	301.56'	128+36.28	129+78.62



CORRECT AS TO RIGHT OF WAY REQUIREMENTS

ALFRED HEDEFINE, PARTNER  
PARSONS, BRINCKERHOFF, HALL & MACDONALD

STATE OF FLORIDA  
STATE ROAD DEPARTMENT

**RIGHT OF WAY MAP**

SECTION NO. (1700-115) 1702-(116)206

ROAD NO. 780 SARASOTA COUNTY

SCALE 1"=50'

SCALE	NAMES	DATES	APPROVED BY
DRAWN	R.A.L.	9-12-56	<i>[Signature]</i>
TRACED	A.A.B.	9-19-56	
INDEXED			DIVISION ENGINEER
REVISED			

STATE HIGHWAY ENGINEER

DATE: 12-15-57

Curve Data  
R=56' (BAHOB)  
A=54°16'28" L  
D=10°00'00"  
L=113.88'  
D=301.86'  
PT 514.123+35.28  
PT 514.123+35.28

Zakrzewski's Addition  
PB A Pg. 33 PRMCF (Sarasota Co.)  
PB 1 Pg. 151 (Manatee Co.)

Lewis J. Miller's  
Subdivision  
PB 1 Pg. 114  
Sarasota Co.

Zakrzewski's  
Addition  
PB A Pg. 67 Sarasota County  
PB 1 Pg. 208 Manatee Co.  
BLOCK J

Hudson Bayou  
Addition  
PB A Pg. 56 Sarasota  
PB 1 Pg. 236 Manatee

Reid's Subdivision of Lot 5 of the Wilkner  
Avenue to Sarasota County, PB A Pg. 13  
PB 1 Pg. 235 Manatee

Note: For details  
See Sheet No. 5

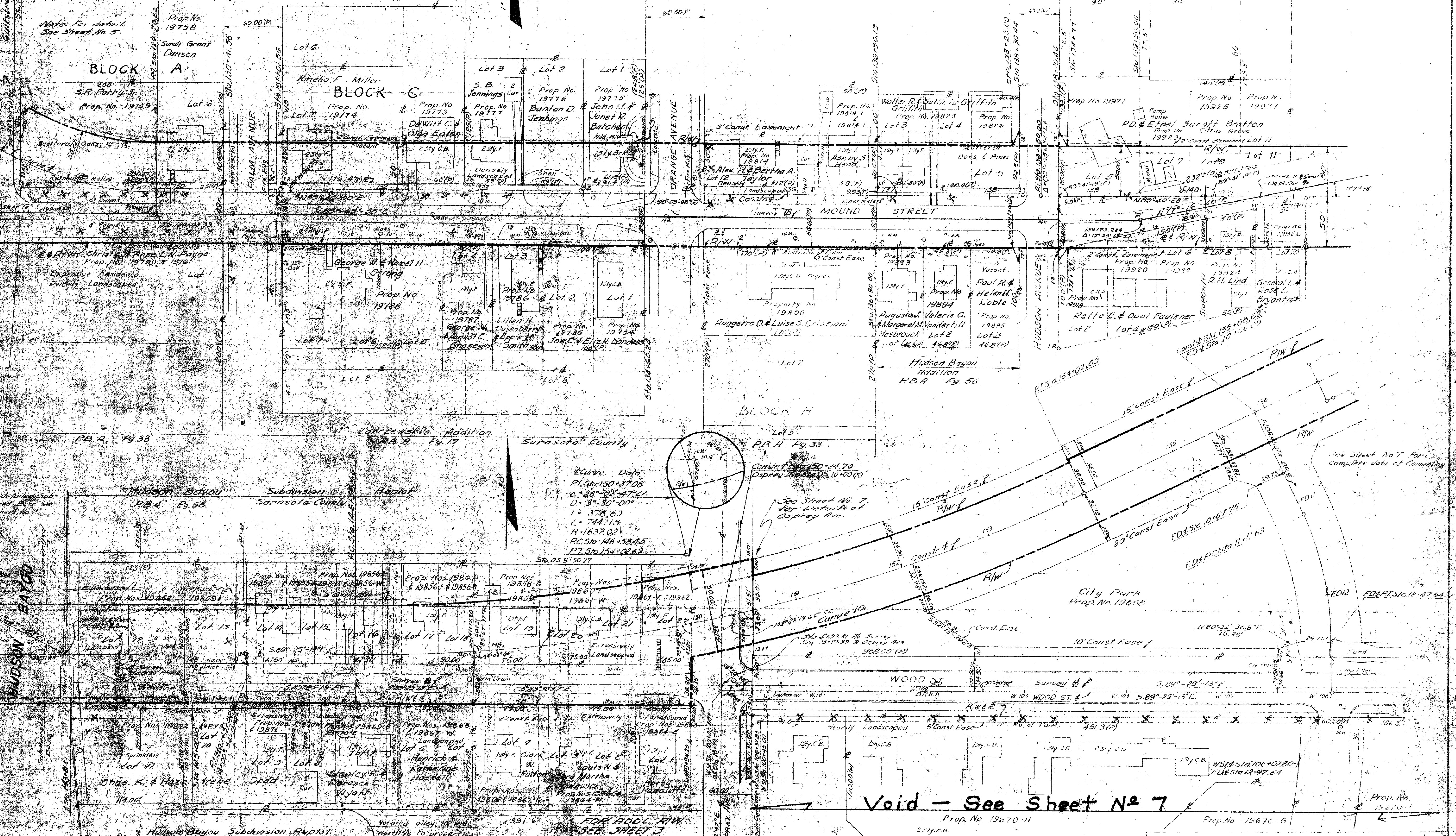
BLOCK A

BLOCK C

BLOCK H

NOTES  
1. All bearings shown in this sheet are based on Standard  
Mechanical Coordinate System (MCS) of Florida.  
2. Symbol (A) denotes "true" dimensions.  
3. Symbol (B) denotes "platted" dimensions.  
4. Symbol (C) denotes "scaled" dimensions.

WOOD ST  
HUDSON BAYOU  
Prop. No. 19820  
Prop. No. 19821  
Prop. No. 19822  
Prop. No. 19823  
Prop. No. 19824  
Prop. No. 19825  
Prop. No. 19826  
Prop. No. 19827  
Prop. No. 19828  
Prop. No. 19829  
Prop. No. 19830  
Prop. No. 19831  
Prop. No. 19832  
Prop. No. 19833  
Prop. No. 19834  
Prop. No. 19835  
Prop. No. 19836  
Prop. No. 19837  
Prop. No. 19838  
Prop. No. 19839  
Prop. No. 19840  
Prop. No. 19841  
Prop. No. 19842  
Prop. No. 19843  
Prop. No. 19844  
Prop. No. 19845  
Prop. No. 19846  
Prop. No. 19847  
Prop. No. 19848  
Prop. No. 19849  
Prop. No. 19850  
Prop. No. 19851  
Prop. No. 19852  
Prop. No. 19853  
Prop. No. 19854  
Prop. No. 19855  
Prop. No. 19856  
Prop. No. 19857  
Prop. No. 19858  
Prop. No. 19859  
Prop. No. 19860  
Prop. No. 19861  
Prop. No. 19862  
Prop. No. 19863  
Prop. No. 19864  
Prop. No. 19865  
Prop. No. 19866  
Prop. No. 19867  
Prop. No. 19868  
Prop. No. 19869  
Prop. No. 19870  
Prop. No. 19871  
Prop. No. 19872  
Prop. No. 19873  
Prop. No. 19874  
Prop. No. 19875  
Prop. No. 19876  
Prop. No. 19877  
Prop. No. 19878  
Prop. No. 19879  
Prop. No. 19880  
Prop. No. 19881  
Prop. No. 19882  
Prop. No. 19883  
Prop. No. 19884  
Prop. No. 19885  
Prop. No. 19886  
Prop. No. 19887  
Prop. No. 19888  
Prop. No. 19889  
Prop. No. 19890  
Prop. No. 19891  
Prop. No. 19892  
Prop. No. 19893  
Prop. No. 19894  
Prop. No. 19895  
Prop. No. 19896  
Prop. No. 19897  
Prop. No. 19898  
Prop. No. 19899  
Prop. No. 19900



Void - See Sheet No 7

STATE OF FLORIDA  
STATE ROAD DEPARTMENT  
RIGHT OF WAY MAP  
SECTION NO. (1700-175) 1702-116-206  
ROAD NO. 780  
SARASOTA COUNTY

SCALE	NAMES	DATES	APPROVED BY
DRAWN	R.A.L.	9-14-56	<i>[Signature]</i> DIVISION ENGINEER STATE HIGHWAY ENGINEER
TRACED	I.D.B.	9-21-56	
INDEXED			
REVISED			
REVISED			

CORRECT AS TO RIGHT-OF-WAY REQUIREMENTS  
Alfred Hoffmann DATE 11/2/58  
ALFRED HOFFMANN, PARTNER  
PARSONS, BRINCKERHOFF, HALL & MACDONALD