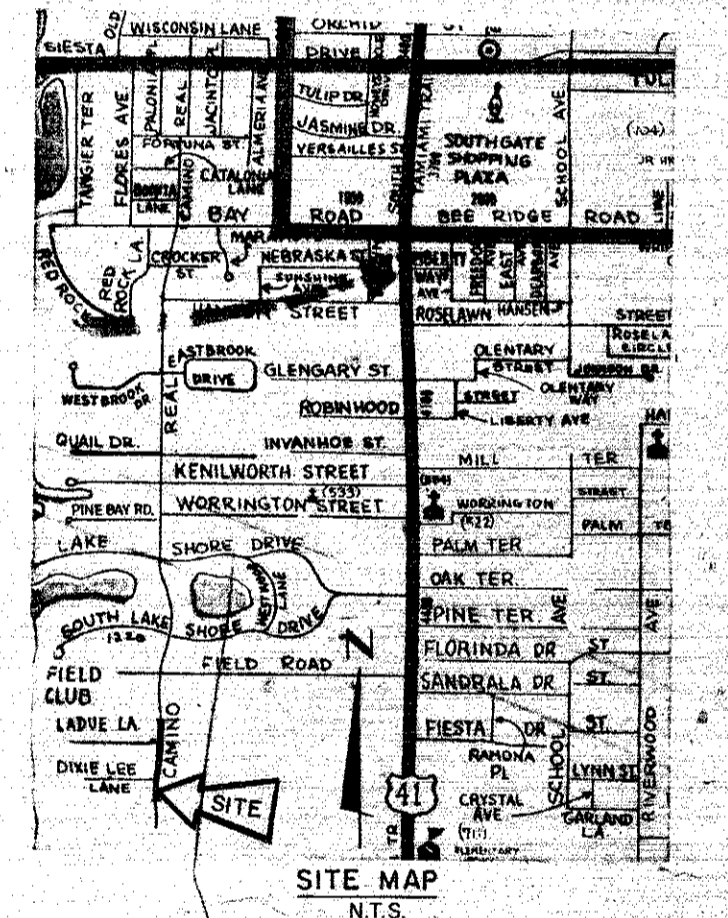


LEGEND OF ABBREVIATIONS

- AVE = AVENUE
- B = BASELINE
- BLK = BLOCK
- BLVD = BOULEVARD
- B.M. = BENCH MARK
- B.T.O.B. = BACK TOP OF BANK
- C.B. = CONDOMINIUM BOOK
- C.C.C.L. = COASTAL CONSTRUCTION CONTROL LINE
- CH = CHORD
- CHP. = CHAPTER
- CH. BRG. = CHORD BEARING
- C.L. = CENTERLINE
- C.M.P. = CORRUGATED METAL PIPE
- CO = COUNTY
- CONDO = CONDOMINIUM
- CONST. = CONSTRUCTION
- COR. = CORNER
- D.B. = DEED BOOK
- D.N.R. = DEPARTMENT OF NATURAL RESOURCES
- D.O.T. = DEPARTMENT OF TRANSPORTATION
- DR. = DRIVE
- DRAIN = DRAINAGE
- E. = EAST
- EASE = EASEMENT
- EP = EDGE OF PAVEMENT
- F.A.C. = FLORIDA ADMINISTRATION CODE
- F.B. = FIELD BOOK
- F.D.D.T. = FLORIDA DEPARTMENT OF TRANSPORTATION
- FL = FLORIDA
- FND = FOUND
- F.P. & L. = FLORIDA POWER AND LIGHT
- G.T.E. = GENERAL TELEPHONE ELECTRIC
- I.P. = IRON PIPE
- I.R. = IRON ROD
- L = LENGTH
- LT. = LEFT
- M.H.W.L. = MEAN HIGH WATER LINE
- MON. = MONUMENT
- M/R/W = MAINTAINED RIGHT-OF-WAY
- N = NORTH
- N & D. = NAIL AND DISC
- NE = NORTH EAST
- N.G.V.D. = NATIONAL GEODETIC VERTICAL DATUM
- NO. = NUMBER
- N.O.S. = NATIONAL OCEAN SERVICE
- NW = NORTHWEST
- O.A. = OVER ALL
- O/E = OVERHEAD ELECTRIC
- O.R.B. = OFFICIAL RECORDS BOOK
- O.T. = ORDER OF TAKING
- P.B. = PLAT BOOK
- P.C. = POINT OF CURVATURE
- P.C.P. = PERMANENT CONTROL POINT
- P.C. = PAGE
- P.I. = POINT OF INTERSECTION
- P.L. = PROPERTY LINE
- P.L.S. = PROFESSIONAL LAND SURVEYOR
- P.R.C. = POINT OF REVERSE CURVE
- P.R.M. = PERMANENT REFERENCE MONUMENT
- P.T. = POINT OF TANGENCY
- R = RADIUS
- R.C.P. = REINFORCED CONCRETE PIPE
- RD. = ROAD
- REF. = REFERENCE
- RESUB. = RESUBDIVISION
- RNG. = RANGE
- R.P.B. = ROAD PLAT BOOK
- R.R. = RAILROAD
- RT. = RIGHT
- R/W = RIGHT-OF-WAY
- S = SOUTH
- SE = SOUTHEAST
- SEC. = SECTION
- S.F.D.D. = SARASOTA-FRUITVILLE DRAINAGE DISTRICT
- S.R. = STATE ROAD
- ST. = STREET
- STA. = STATION
- SUB. = SUBDIVISION
- SW = SOUTHWEST
- T = TANGENT
- T.I.I.F. = TRUSTEES OF THE INTERNAL IMPROVEMENT FUND
- T.B. = TOP OF BANK
- TOWNSHIP = TOWNSHIP
- U/E = UNDERGROUND ELECTRIC
- U.S. = UNITED STATES
- VEG. = VEGETATION
- W = WEST



SURVEYORS NOTES

1. BEARINGS SHOWN ARE BASED ON THE WEST LINE OF LOTS 65 THROUGH 70, THE LANDINGS, UNIT 1, RECORDED IN PLAT BOOK 27 AT PAGE 12, BEING N 10°06'00\"/>

A CHANGE OR JOG ON THE MAINTAINED RIGHT-OF-WAY LINE IS NOT NECESSARILY LOCATED AT AN INTERSECTING PROPERTY LINE.

SURVEYOR'S CERTIFICATE

I HEREBY CERTIFY THAT THIS MAINTAINED R/W MAP REPRESENTS A BOUNDARY SURVEY OF THE ROAD AS SHOWN. THAT THE SURVEY WAS RECENTLY PERFORMED UNDER MY DIRECTION, AND THAT IT IS TRUE AND CORRECT TO THE BEST OF MY KNOWLEDGE AND BELIEF, AND THAT IT MEETS THE MINIMUM TECHNICAL STANDARDS FOR LAND SURVEYING IN THE STATE OF FLORIDA (CH21 HH-6, F.A.C.)

DATE OF SURVEY: 7-26-89

E.R. EMERSON, COUNTY SURVEYOR  
PROFESSIONAL LAND SURVEYOR NO. 1867  
STATE OF FLORIDA  
1301 CATTLEMAN ROAD  
SARASOTA, FLORIDA 34232-9631

DATE: 10-10-90

THIS IS TO CERTIFY THAT THE NUMBERED SHEETS ONE (1) OF ONE (1) CONSTITUTES THE OFFICIAL MAINTENANCE MAP SHOWING THE LOCATION AND SURVEY BY THE SARASOTA COUNTY, FLORIDA, TRANSPORTATION DEPARTMENT FOR CAMINO REAL, LYING NORTH OF KIMLIRA LANE (PRIVATE ROAD) TO A POINT 625' FEET NORTH, ALL BEING IN SECTION 6, TOWNSHIP 37S, RANGE 18E, SARASOTA COUNTY, FLORIDA. THE PROPERTY SHOWN CROSS-HATCHED ON THIS MAP HAS BEEN VESTED IN SARASOTA COUNTY, FLORIDA, PURSUANT TO THE PROVISIONS OF CHAPTER 95.361, FLORIDA STATUTES OF 1987.

ACCEPTED FOR FILES AND RECORDED IN THE PUBLIC RECORDS OF SARASOTA COUNTY, FLORIDA THIS 1ST DAY OF NOVEMBER A.D. 1990, ROAD PLAT BOOK 30# PAGE 34

*[Signature]*  
CLERK OF THE CIRCUIT COURT  
SARASOTA COUNTY, FLORIDA

THIS IS TO CERTIFY THAT THIS MAINTAINED MAP WAS APPROVED BY RESOLUTION NO. R90-387 PASSED AND ADOPTED BY THE BOARD OF COUNTY COMMISSIONERS OF SARASOTA COUNTY, FLORIDA, ON THE 30th DAY OF October A.D. 1990.

*[Signature]*  
VICE-CHAIRMAN

ATTEST:  
KAREN E. RUSHING CLERK OF THE CIRCUIT COURT AND EX-OFFICIO CLERK OF THE BOARD OF COUNTY COMMISSIONERS OF SARASOTA COUNTY, FLORIDA BY:

*[Signature]*  
DEPUTY CLERK

THIS IS TO CERTIFY THAT THE LIMITS OF THE ROADWAY OUTSIDE OF PLATTED RIGHT-OF-WAY AS SHOWN CROSS-HATCHED HEREON, HAS BEEN MAINTAINED CONTINUOUSLY FOR OVER FOUR (4) YEARS WITHOUT INTERRUPTION.

*[Signature]*  
SUPERINTENDENT  
ROAD & BRIDGE DIVISION

DATE: 5-6-88

SARASOTA COUNTY TRANSPORTATION DEPARTMENT ENGINEERING DIVISION, CADASTRAL SECTION			
<b>MAINTAINED RIGHT OF WAY MAP</b>			
CAMINO REAL FROM KIMLIRA LN. A DISTANCE OF 625± NORTH			
DRAWN	BY	DATE	<i>[Signature]</i> DATE: 10-10-90 <i>[Signature]</i> DATE: 10-10-90 <i>[Signature]</i> DATE: 10-22-90 TRANSPORTATION DIRECTOR
CHECKED	T.S. OWEN	2-27-88	
COMPARED	F.E.G.	5-6-88	
REF. PB 27/12E, 12F, 12G, 12H, 12I, 12J, 12K, 12L, 12M, 12N, 12O, 12P, 12Q, 12R, 12S, 12T, 12U, 12V, 12W, 12X, 12Y, 12Z, 12AA, 12AB, 12AC, 12AD, 12AE, 12AF, 12AG, 12AH, 12AI, 12AJ, 12AK, 12AL, 12AM, 12AN, 12AO, 12AP, 12AQ, 12AR, 12AS, 12AT, 12AU, 12AV, 12AW, 12AX, 12AY, 12AZ, 12BA, 12BB, 12BC, 12BD, 12BE, 12BF, 12BG, 12BH, 12BI, 12BJ, 12BK, 12BL, 12BM, 12BN, 12BO, 12BP, 12BQ, 12BR, 12BS, 12BT, 12BU, 12BV, 12BW, 12BX, 12BY, 12BZ, 12CA, 12CB, 12CC, 12CD, 12CE, 12CF, 12CG, 12CH, 12CI, 12CJ, 12CK, 12CL, 12CM, 12CN, 12CO, 12CP, 12CQ, 12CR, 12CS, 12CT, 12CU, 12CV, 12CW, 12CX, 12CY, 12CZ, 12DA, 12DB, 12DC, 12DD, 12DE, 12DF, 12DG, 12DH, 12DI, 12DJ, 12DK, 12DL, 12DM, 12DN, 12DO, 12DP, 12DQ, 12DR, 12DS, 12DT, 12DU, 12DV, 12DW, 12DX, 12DY, 12DZ, 12EA, 12EB, 12EC, 12ED, 12EE, 12EF, 12EG, 12EH, 12EI, 12EJ, 12EK, 12EL, 12EM, 12EN, 12EO, 12EP, 12EQ, 12ER, 12ES, 12ET, 12EU, 12EV, 12EW, 12EX, 12EY, 12EZ, 12FA, 12FB, 12FC, 12FD, 12FE, 12FF, 12FG, 12FH, 12FI, 12FJ, 12FK, 12FL, 12FM, 12FN, 12FO, 12FP, 12FQ, 12FR, 12FS, 12FT, 12FU, 12FV, 12FW, 12FX, 12FY, 12FZ, 12GA, 12GB, 12GC, 12GD, 12GE, 12GF, 12GG, 12GH, 12GI, 12GJ, 12GK, 12GL, 12GM, 12GN, 12GO, 12GP, 12GQ, 12GR, 12GS, 12GT, 12GU, 12GV, 12GW, 12GX, 12GY, 12GZ, 12HA, 12HB, 12HC, 12HD, 12HE, 12HF, 12HG, 12HH, 12HI, 12HJ, 12HK, 12HL, 12HM, 12HN, 12HO, 12HP, 12HQ, 12HR, 12HS, 12HT, 12HU, 12HV, 12HW, 12HX, 12HY, 12HZ, 12IA, 12IB, 12IC, 12ID, 12IE, 12IF, 12IG, 12IH, 12II, 12IJ, 12IK, 12IL, 12IM, 12IN, 12IO, 12IP, 12IQ, 12IR, 12IS, 12IT, 12IU, 12IV, 12IW, 12IX, 12IY, 12IZ, 12JA, 12JB, 12JC, 12JD, 12JE, 12JF, 12JG, 12JH, 12JI, 12JJ, 12JK, 12JL, 12JM, 12JN, 12JO, 12JP, 12JQ, 12JR, 12JS, 12JT, 12JU, 12JV, 12JW, 12JX, 12JY, 12JZ, 12KA, 12KB, 12KC, 12KD, 12KE, 12KF, 12KG, 12KH, 12KI, 12KJ, 12KK, 12KL, 12KM, 12KN, 12KO, 12KP, 12KQ, 12KR, 12KS, 12KT, 12KU, 12KV, 12KW, 12KX, 12KY, 12KZ, 12LA, 12LB, 12LC, 12LD, 12LE, 12LF, 12LG, 12LH, 12LI, 12LJ, 12LK, 12LL, 12LM, 12LN, 12LO, 12LP, 12LQ, 12LR, 12LS, 12LT, 12LU, 12LV, 12LW, 12LX, 12LY, 12LZ, 12MA, 12MB, 12MC, 12MD, 12ME, 12MF, 12MG, 12MH, 12MI, 12MJ, 12MK, 12ML, 12MN, 12MO, 12MP, 12MQ, 12MR, 12MS, 12MT, 12MU, 12MV, 12MW, 12MX, 12MY, 12MZ, 12NA, 12NB, 12NC, 12ND, 12NE, 12NF, 12NG, 12NH, 12NI, 12NJ, 12NK, 12NL, 12NM, 12NN, 12NO, 12NP, 12NQ, 12NR, 12NS, 12NT, 12NU, 12NV, 12NW, 12NX, 12NY, 12NZ, 12OA, 12OB, 12OC, 12OD, 12OE, 12OF, 12OG, 12OH, 12OI, 12OJ, 12OK, 12OL, 12OM, 12ON, 12OO, 12OP, 12OQ, 12OR, 12OS, 12OT, 12OU, 12OV, 12OW, 12OX, 12OY, 12OZ, 12PA, 12PB, 12PC, 12PD, 12PE, 12PF, 12PG, 12PH, 12PI, 12PJ, 12PK, 12PL, 12PM, 12PN, 12PO, 12PP, 12PQ, 12PR, 12PS, 12PT, 12PU, 12PV, 12PW, 12PX, 12PY, 12PZ, 12QA, 12QB, 12QC, 12QD, 12QE, 12QF, 12QG, 12QH, 12QI, 12QJ, 12QK, 12QL, 12QM, 12QN, 12QO, 12QP, 12QQ, 12QR, 12QS, 12QT, 12QU, 12QV, 12QW, 12QX, 12QY, 12QZ, 12RA, 12RB, 12RC, 12RD, 12RE, 12RF, 12RG, 12RH, 12RI, 12RJ, 12RK, 12RL, 12RM, 12RN, 12RO, 12RP, 12RQ, 12RR, 12RS, 12RT, 12RU, 12RV, 12RW, 12RX, 12RY, 12RZ, 12SA, 12SB, 12SC, 12SD, 12SE, 12SF, 12SG, 12SH, 12SI, 12SJ, 12SK, 12SL, 12SM, 12SN, 12SO, 12SP, 12SQ, 12SR, 12SS, 12ST, 12SU, 12SV, 12SW, 12SX, 12SY, 12SZ, 12TA, 12TB, 12TC, 12TD, 12TE, 12TF, 12TG, 12TH, 12TI, 12TJ, 12TK, 12TL, 12TM, 12TN, 12TO, 12TP, 12TQ, 12TR, 12TS, 12TT, 12TU, 12TV, 12TW, 12TX, 12TY, 12TZ, 12UA, 12UB, 12UC, 12UD, 12UE, 12UF, 12UG, 12UH, 12UI, 12UJ, 12UK, 12UL, 12UM, 12UN, 12UO, 12UP, 12UQ, 12UR, 12US, 12UT, 12UU, 12UV, 12UW, 12UX, 12UY, 12UZ, 12VA, 12VB, 12VC, 12VD, 12VE, 12VF, 12VG, 12VH, 12VI, 12VJ, 12VK, 12VL, 12VM, 12VN, 12VO, 12VP, 12VQ, 12VR, 12VS, 12VT, 12VU, 12VV, 12VW, 12VX, 12VY, 12VZ, 12WA, 12WB, 12WC, 12WD, 12WE, 12WF, 12WG, 12WH, 12WI, 12WJ, 12WK, 12WL, 12WM, 12WN, 12WO, 12WP, 12WQ, 12WR, 12WS, 12WT, 12WU, 12WV, 12WW, 12WX, 12WY, 12WZ, 12XA, 12XB, 12XC, 12XD, 12XE, 12XF, 12XG, 12XH, 12XI, 12XJ, 12XK, 12XL, 12XM, 12XN, 12XO, 12XP, 12XQ, 12XR, 12XS, 12XT, 12XU, 12XV, 12XW, 12XX, 12XY, 12XZ, 12YA, 12YB, 12YC, 12YD, 12YE, 12YF, 12YG, 12YH, 12YI, 12YJ, 12YK, 12YL, 12YM, 12YN, 12YO, 12YP, 12YQ, 12YR, 12YS, 12YT, 12YU, 12YV, 12YW, 12YX, 12YY, 12YZ, 12ZA, 12ZB, 12ZC, 12ZD, 12ZE, 12ZF, 12ZG, 12ZH, 12ZI, 12ZJ, 12ZK, 12ZL, 12ZM, 12ZN, 12ZO, 12ZP, 12ZQ, 12ZR, 12ZS, 12ZT, 12ZU, 12ZV, 12ZW, 12ZX, 12ZY, 12ZZ			
SCALE	1" = 50'	PROJECT NO.	88012
		SHEET	1 of 1

FILED FOR RECORDS  
NOV 13 1990  
RESOR90 387 OR B 2252 PG 1317  
BCC