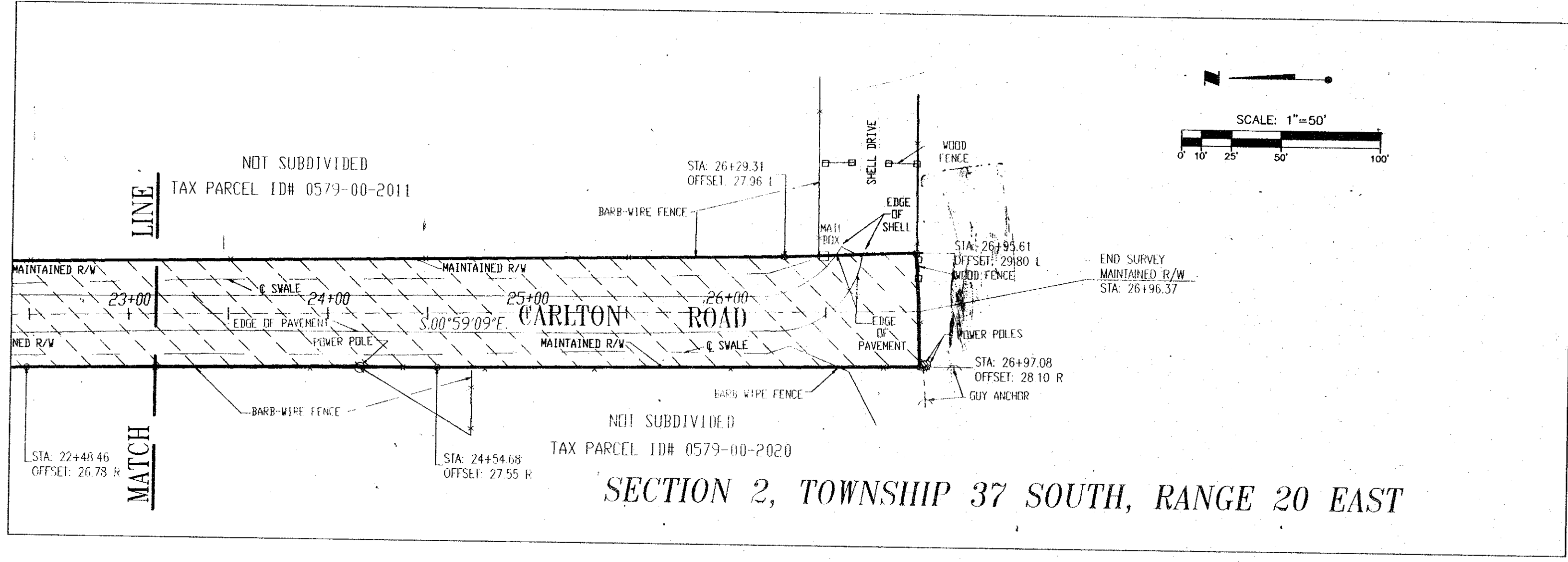
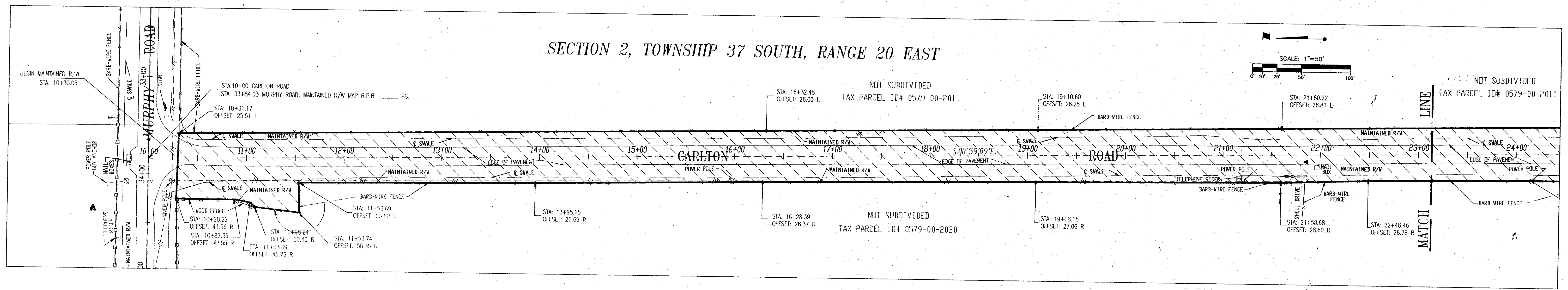


SECTION 2, TOWNSHIP 37 SOUTH, RANGE 20 EAST



SECTION 2, TOWNSHIP 37 SOUTH, RANGE 20 EAST

FILED FOR RECORD
 27 MAR 11 PM 3:21
 KAREN E. RUSHING
 CLERK OF CIRCUIT COURT
 SARASOTA COUNTY, FL

THIS IS TO CERTIFY THAT THE NUMBERED SHEET ONE (1) OF ONE (1) CONSTITUTES THE OFFICIAL MAINTENANCE MAP SHOWING THE LOCATION AND SURVEY BY WILSON, MILLER, BARTON & PECK, INC. FOR CARLTON ROAD, BEING IN SECTION 2, TOWNSHIP 37 SOUTH, RANGE 20 EAST, SARASOTA COUNTY, FLORIDA PURSUANT TO THE PROVISIONS OF CHAPTER 95.361, FLORIDA STATUTES OF 1991.

FILED FOR RECORD IN ROAD PLAT BOOK 4 AT PAGE 12 OF THE PUBLIC RECORDS OF SARASOTA COUNTY, FLORIDA, THIS 11 20 DAY OF March, A.D. 1997.

KAREN E. RUSHING
 CLERK OF CIRCUIT COURT
 SARASOTA COUNTY, FLORIDA
 BY: *Christine M. Hamel*
 DEPUTY CLERK

THIS IS TO CERTIFY THAT THIS MAINTAINED MAP WAS APPROVED BY RESOLUTION NO. 95-266 PASSED AND ADOPTED BY THE BOARD OF COUNTY COMMISSIONERS OF SARASOTA COUNTY, FLORIDA ON THE 21st DAY OF NOVEMBER, A.D. 1995.

David R. Mills
 CHAIRMAN

ATTEST
 KAREN E. RUSHING, CLERK OF THE CIRCUIT COURT AND EX-OFFICIO CLERK OF THE BOARD OF COUNTY COMMISSIONERS OF SARASOTA COUNTY, FLORIDA BY:
Wesley Kay Garland
 DEPUTY CLERK

THIS IS TO CERTIFY THAT THE LIMITS OF THE ROADWAY OUTSIDE OF PLATTED RIGHT-OF-WAY AS SHOWN CROSS-HATCHED HEREON, HAS BEEN MAINTAINED CONTINUOUSLY FOR OVER FOUR (4) YEARS.

John Fariss
 JOHN FARISS
 AREA SUPERINTENDENT
 HIGHWAY MAINTENANCE

- SYMBOL LEGEND**
- ⊙ = FOUND CONCRETE MONUMENT, PLS # AS NOTED
 - = IRON PIPE FND
 - ⊕ = POWER POLE
 - ⊖ = GUY ANCHOR
 - ☐ = TELEPHONE RISER
 - ⊕ = SIGN
 - ⊕ = MAIL BOX
 - ⊕ = PK NAIL SET
 - x-x-x = BARB-WIRE FENCE
 - ⊕ = WOOD FENCE
 - ⊕ = MAINTAINED R/W
 - ⊕ = EDGE OF SWALE
 - ⊕ = IRON ROD SET WITH RED CAP STAMPED COUNTY RW P.L.S. 3924

- SURVEYOR'S NOTES**
1. BEARINGS SHOWN HEREON ARE BASED ON THE SOUTH LINE OF SECTION 35, TWP. 36S., RANGE 20 E., SAID BEARING BEING EAST.
 2. A CHANGE OR JOG ON THE MAINTAINED RIGHT-OF-WAY LINE IS NOT NECESSARILY LOCATED AT AN INTERSECTION PROPERTY LINE.
 3. IMPROVEMENTS SUCH AS BUT NOT LIMITED TO UNDERGROUND UTILITIES, LANDSCAPE FEATURES, ETC., HAVE NOT BEEN LOCATED EXCEPT AS SHOWN.

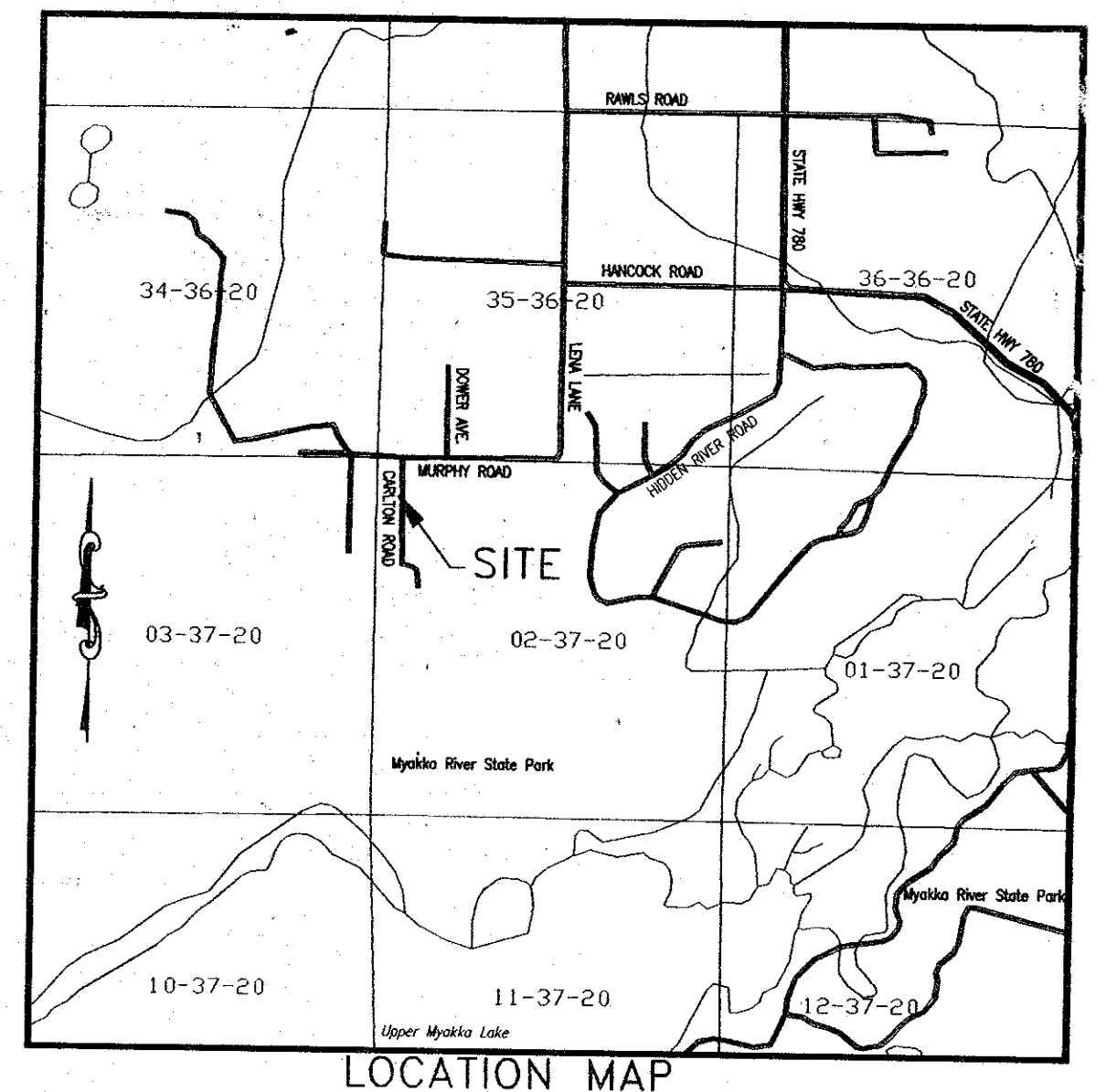
- ABBREVIATION LEGEND**
- R/W = RIGHT-OF-WAY
 - P.B. = PLAT BOOK
 - FND = FOUND
 - PG. = PAGE
 - SEC. = SECTION
 - TWP. = TOWNSHIP
 - RGE. = RANGE
 - M = MEASURED
 - NO. = NUMBER
 - L = LEFT
 - R = RIGHT
 - P = PLAT
 - STA = STATION
 - M/R/W = MAINTAINED RIGHT-OF-WAY
 - SARCO = SARASOTA COUNTY
 - FAC = FLORIDA ADMINISTRATIVE CODE
 - FS = FLORIDA STATUTES
 - CL. = CENTERLINE
 - P.L.S. = PROFESSIONAL LAND SURVEYOR
 - DOC. = DOCUMENT

SURVEYOR'S CERTIFICATE

I HEREBY CERTIFY THAT THIS R/W MAP (SHEET 1-1) REPRESENTS A SURVEY OF THE ROAD ALIGNMENT AS SHOWN HEREON, THAT THE SURVEY WAS RECENTLY PERFORMED UNDER MY DIRECTION, AND THAT IT IS TRUE AND CORRECT TO THE BEST OF MY KNOWLEDGE AND BELIEF, AND THAT THE SURVEY MEETS THE MINIMUM TECHNICAL STANDARDS AS SET FORTH BY THE FLORIDA BOARD OF PROFESSIONAL LAND SURVEYORS IN CHAPTER 61G17-6, F.A.C. PURSUANT TO SECTION 472.027, F.S.

DATE OF SURVEY: May 26, 1995
 DATE MONUMENTS SET: May 15, 1995

Robert R. Cunningham
 ROBERT R. CUNNINGHAM
 PROFESSIONAL LAND SURVEYOR NO. 3924
 WILSON, MILLER, BARTON & PECK, INC.
 133 SOUTH MCINTOSH ROAD
 SARASOTA, FLORIDA 34232



SARASOTA COUNTY TRANSPORTATION DEPARTMENT
 ENGINEERING DIVISION - SURVEY - MAPPING SECTION

MAINTAINED RIGHT OF WAY MAP
 CARLTON ROAD
 MURPHY ROAD SOUTH TO END OF RIGHT-OF-WAY

DRAWN	RWC/SAM	DATE	12-27-94
CHECKED	RRC	DATE	03-26-95
COMPARED		DATE	

REF. FIELD BOOK 116, PG. 1
 1/2 SECTION MAP #579

SCALE 1" = 50' PROJECT NO. 2685-4 SHEET 1 OF 1

B.C.C. RES 95-266 D.R.B. 2893 PG. 928