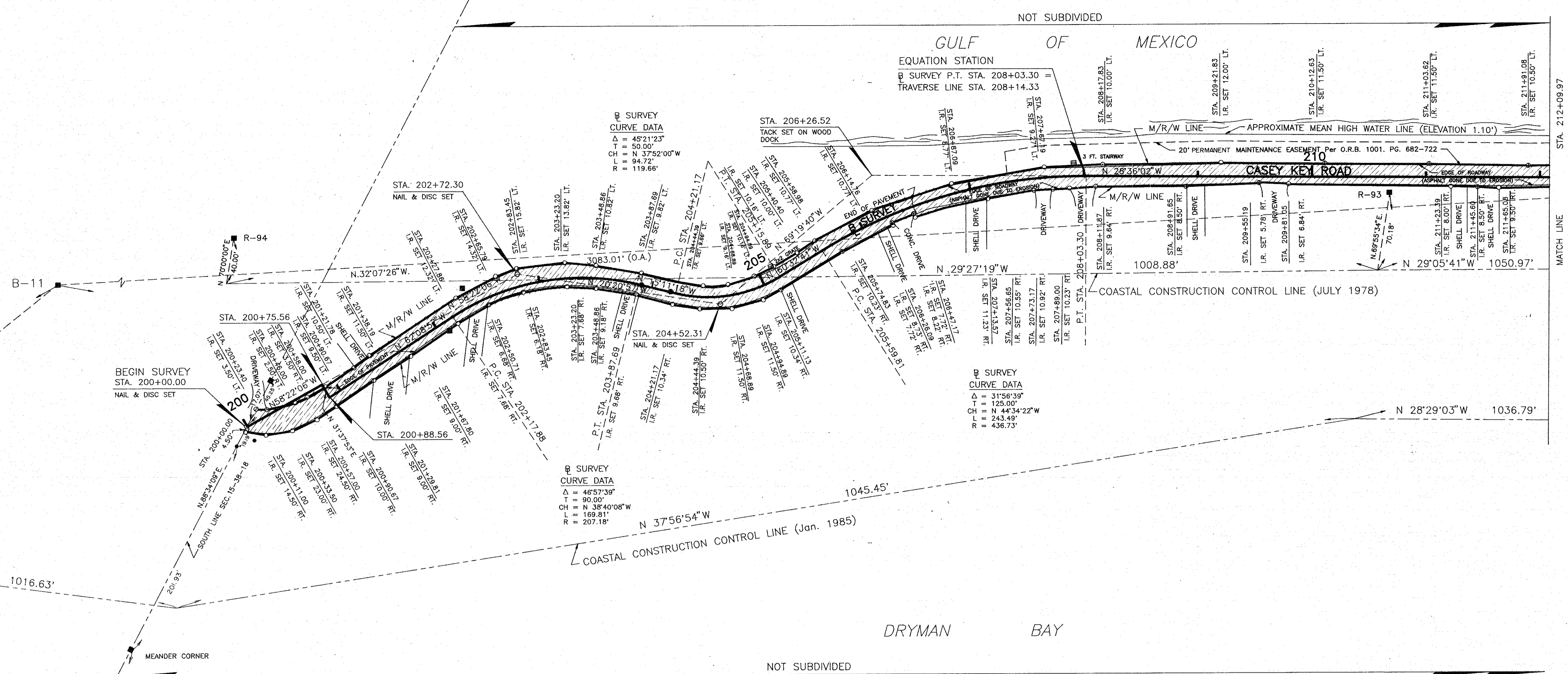
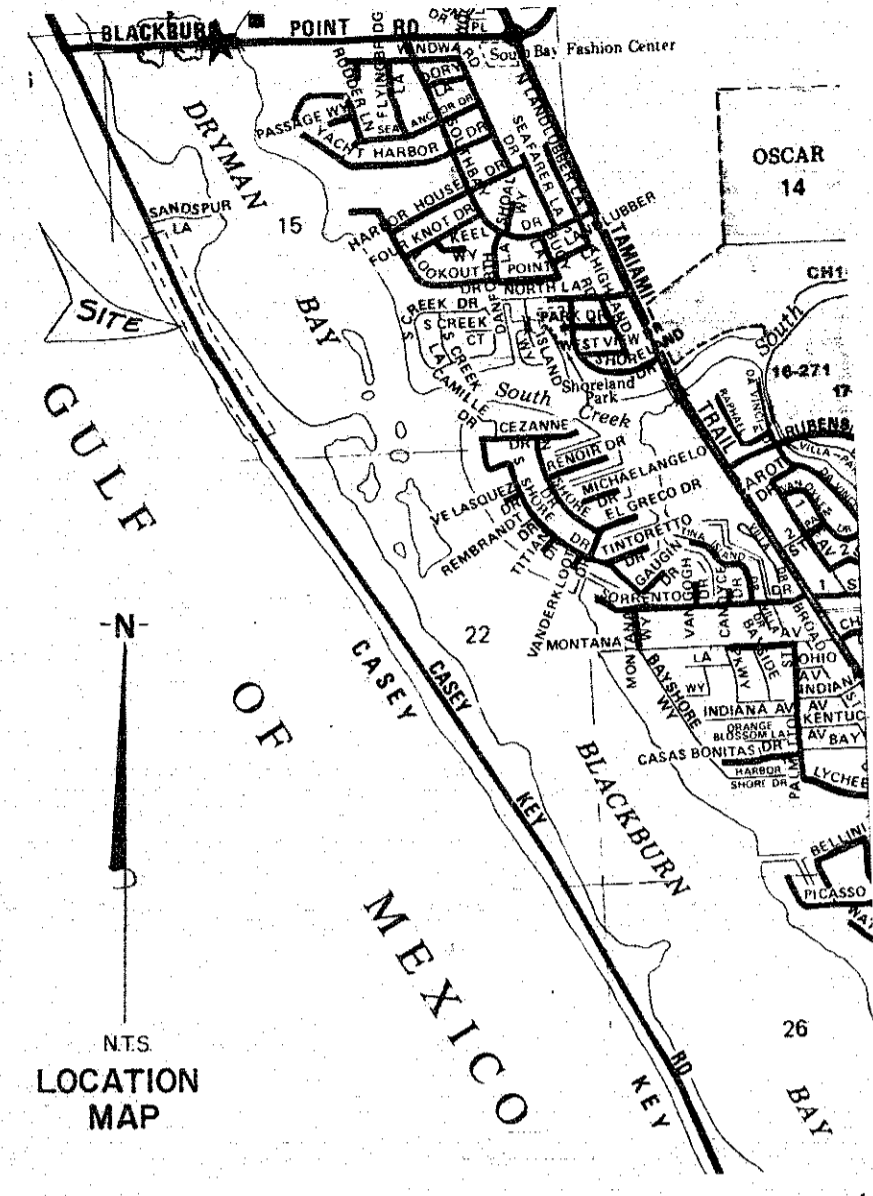


SECTION 22, TOWNSHIP 38 SOUTH, RANGE 18 EAST

SECTION 15, TOWNSHIP 38 SOUTH, RANGE 18 EAST



LEGEND OF ABBREVIATIONS

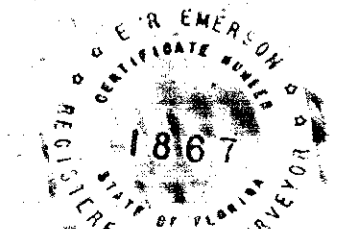
- List of abbreviations including B.M., B.T.O.B., C.C.C.L., G, C.M., C.M.P., CO., CONST., COR., D.B., D.D., D.N.R., DR., DRAIN., E, EASE., EP., F.A.C., F.B., F.D.O.T., FL, FND., F.N., I.P., I.R., LT., M, M.H.W.L., MON., M/R/W, N, N. & D., NE, NO., NW, O.A., O.R.B., P.B., P.C.P., Pg., P, P.L.S., P.R.M., RD., REF., RNC., R.P.B., R.R., RT., R/W, S, SE, SEC., S.F.D.D., S.R., STA., SUB., T.B., TWP., U.S., W.

SURVEYOR'S CERTIFICATE

I HEREBY CERTIFY THAT THIS R/W MAP (SHEETS 1-3) REPRESENTS A SPECIFIC PURPOSE SURVEY OF THE ROAD AS SHOWN, THAT THE SURVEY WAS RECENTLY PERFORMED UNDER MY DIRECTION, AND THAT IT IS TRUE AND CORRECT TO THE BEST OF MY KNOWLEDGE AND BELIEF, AND THAT IT MEETS THE MINIMUM TECHNICAL STANDARDS FOR LAND SURVEYING IN THE STATE OF FLORIDA (CH. 21 HH-6, F.A.C.)

DATE OF SURVEY 3-7-90

E.R. EMERSON, COUNTY SURVEYOR NO. 1867, 1301 CATTLEMAN ROAD, SARASOTA, FLORIDA 34232-9631



SURVEYOR'S NOTES

- 1. BEARING SYSTEM FOR THIS SURVEY BASED ON CALCULATED INVERSE BETWEEN B-10 AND B-11 USING BEARINGS AND DISTANCES SHOWN ON SARASOTA COUNTY COASTAL CONSTRUCTION CONTROL LINE, SHEET 9 OF 14, DATED JAN. 29, 1985.
2. A CHANGE OR JOG ON THE MAINTAINED RIGHT-OF-WAY LINE IS NOT NECESSARILY LOCATED AT AN INTERSECTING PROPERTY LINE.
3. THE APPROXIMATE MEAN HIGH WATER LINE (ELEVATION 1.10') AS SHOWN ON THIS MAINTAINED RIGHT-OF-WAY MAP IS NOT A TIDAL PROPERTY BOUNDARY, WAS NOT LOCATED IN ACCORDANCE WITH PROCEDURES SPECIFIED IN THE 'COASTAL MAPPING ACT OF 1974' (CHAPTER 177, PART I OF THE FLORIDA STATUTES), AND THE 'RULES OF THE DEPARTMENT OF NATURAL RESOURCES' (CHAPTER 16-3 OF THE FLORIDA ADMINISTRATIVE CODE) AND IS NOT TO BE USED AS REPRESENTED TO BE OR ADMISSIBLE AS A TIDAL PROPERTY BOUNDARY WATER LINE BEFORE ANY ADMINISTRATIVE BODY OR COURT OF LAW. THE APPROXIMATE MEAN HIGH WATER LINE HAS BEEN USED DUE TO IT BEING INCIDENTAL TO THE PURPOSE FOR WHICH THIS RECORD OF SURVEY HAS BEEN PREPARED.
4. REVISED TO SHOW CORNERS RESET ON JAN. 27, 1992 BY JORGENSEN-HARRIS AND ASSOC., REVENTMENT PROJECT CONTRACTOR (SEE LEGEND).

THIS IS TO CERTIFY THAT THE NUMBERED SHEETS TWO (2) OF TWO (2) CONSTITUTES THE OFFICIAL MAINTENANCE MAP SHOWING THE LOCATION AND SURVEY BY THE SARASOTA COUNTY, FLORIDA, TRANSPORTATION DEPARTMENT FOR SOUTH CASEY KEY ROAD, LYING BETWEEN THE SOUTH LINE OF SECTION 15, TOWNSHIP 38 SOUTH, RANGE 18 EAST AND THE SOUTH LINE OF ADMIRAL BENBOW CLUB SUBDIVISION, ALL BEING IN SECTION 15, TOWNSHIP 38 SOUTH, RANGE 18 EAST, SARASOTA COUNTY, FLORIDA. PURSUANT TO THE PROVISIONS OF CHAPTER 95.361, FLORIDA STATUTES OF 1987.

ACCEPTED FOR FILES AND RECORDED IN THE PUBLIC RECORDS OF SARASOTA COUNTY, FLORIDA, THIS 23rd DAY OF JANUARY, A.D. 1991, ROAD PLAT BOOK 3, PAGE 36-36A

THIS IS TO CERTIFY THAT THIS MAINTAINED MAP WAS APPROVED BY RESOLUTION NO. 231-07 PASSED AND ADOPTED BY THE BOARD OF COUNTY COMMISSIONERS OF SARASOTA COUNTY, FLORIDA, ON THE 23rd DAY OF JANUARY, A.D. 1991.

Richard Christian, Chairman

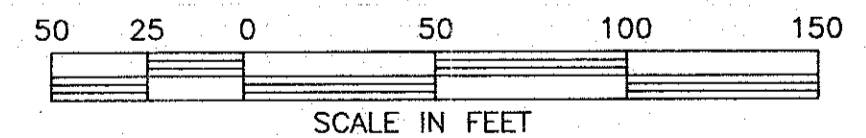
KAREN E. RUSHING CLERK OF THE CIRCUIT COURT AND EX-OFFICIO CLERK OF THE BOARD OF COUNTY COMMISSIONERS OF SARASOTA COUNTY, FLORIDA BY: Karen E. Rushing

Richard Christian, 10-5-90, DATE

RICHARD CHRISTENSEN, AREA SUPERINTENDENT, HIGHWAY MAINTENANCE DIVISION

CLERK OF THE CIRCUIT COURT, SARASOTA COUNTY, FLORIDA

Table with columns for date and number, containing entries like 2-11-92, 2370, 1123 and 11-13-91, 2344, 43.



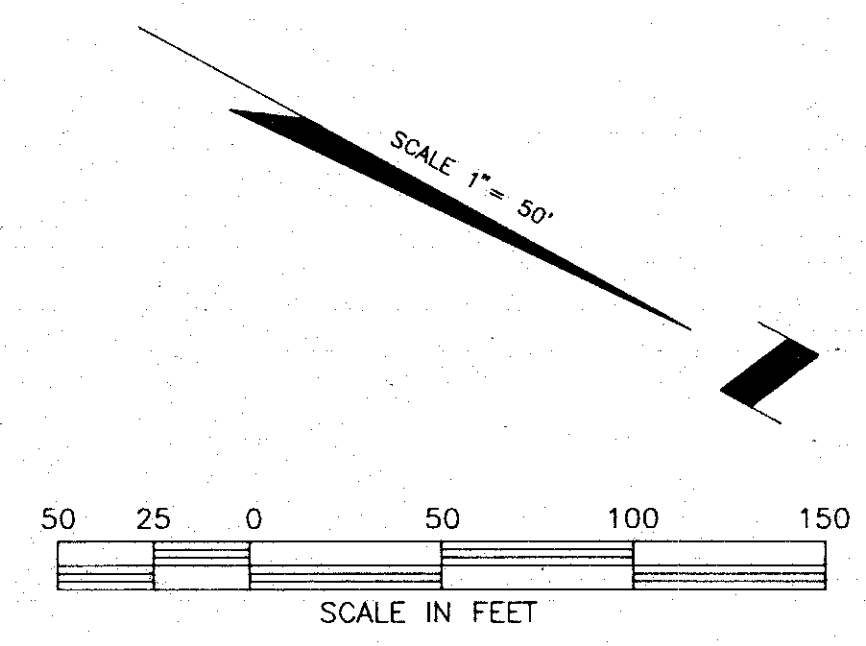
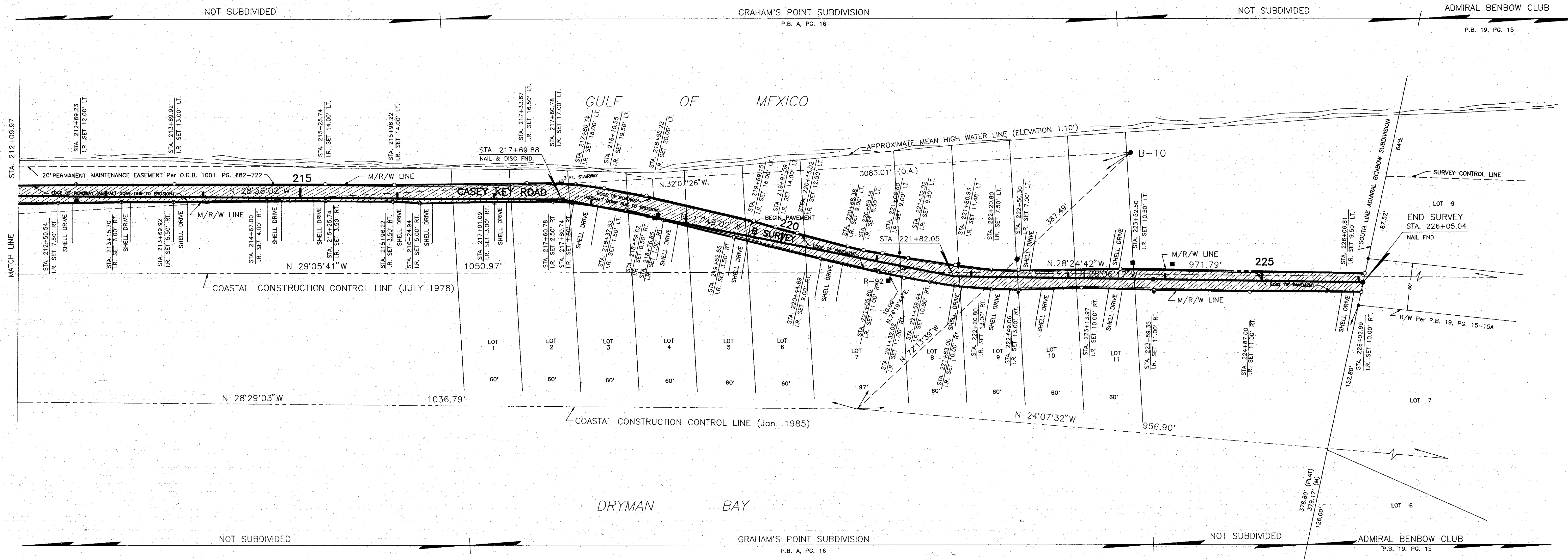
LEGEND

- Legend symbols for NAIL & DISK SET, REF NAIL & DISC, I.R. SET WITH RED CAP STAMPED COUNTY R/W PLS 1887, I.R. FND, RAILROAD SPIKE FND, HUB SET, HUB FND, CONCRETE MONUMENT SET, CONCRETE MONUMENT FND, WATER VALVE, UTILITY POLE, G.I. & T.V. CABLE BOX, MANHOLE, LIGHT POLE, FIRE HYDRANT, GUY WIRE, TOP OF BANK, EDGE OF PAVEMENT, OAK TREE, PINE TREE, PALM TREE, I.R. SET JAN. 27, 1992 WITH ALUMINUM CAP STAMPED COUNTY R/W P.L.S. #4631

MAINTAINED RIGHT OF WAY MAP, CASEY KEY ROAD, S. LINE OF SEC. 15 TO THE S. LINE OF ADMIRAL BENBOW SUB. Includes drawing, checked, compared, ref. information and scale 1" = 50'.

B.C.C. RESO. NO. R91-07 O.R.B. 2270 PG. 1732

SECTION 15, TOWNSHIP 38 SOUTH, RANGE 18 EAST



LEGEND

- = NAIL & DISK SET
- = NAIL & DISK FND.
- = REF NAIL & DISC
- = I.R. SET WITH RED CAP STAMPED COUNTY S/W PLS 1867
- = I.R. FND.
- = RAILROAD SPIKE FND.
- = HUB SET
- = HUB FND.
- = CONCRETE MONUMENT SET
- = CONCRETE MONUMENT FND.
- = WATER VALVE
- = UTILITY POLE
- = G.T. & T.V. CABLE BOX
- = MANHOLE
- = LIGHT POLE
- = FIRE HYDRANT
- = GUY WIRE
- = TOP OF BANK
- = EDGE OF PAVEMENT
- = OAK TREE
- = PINE TREE
- = PALM TREE
- = I.R. SET JAN. 27, 1892 WITH ALUMINUM CAP STAMPED COUNTY R/W P.L.S. #4631

SARASOTA COUNTY TRANSPORTATION DEPARTMENT			
ENGINEERING DIVISION - SURVEY - MAPPING SECTION			
MAINTAINED RIGHT OF WAY MAP			
CASEY KEY ROAD			
S. LINE OF SEC. 15 TO THE S. LINE OF ADMIRAL BENBOW SUB.			
DRAWN	BY	DATE	SURVEY
W.F.W./T.S.O.	3-15-90	10-10-90	
CHECKED	9-13-90	11-30-90	
COMPARED	K.C.L. 6-25-90	11/30/90	
REF.	DATA DRAWER 1, FILE NO. 5 F.B. 325, PG. 13-14		TRANSPORTATION DIRECTOR
SCALE	1" = 50'	PROJECT NO.	90007 (8915)
		SHEET	2 OF 2