

See Sheet 4 for Certifications

SARASOTA COUNTY TRANSPORTATION DEPARTMENT  
ENGINEERING DIVISION

### MAINTAINED RIGHT OF WAY MAP CATTLEMEN ROAD

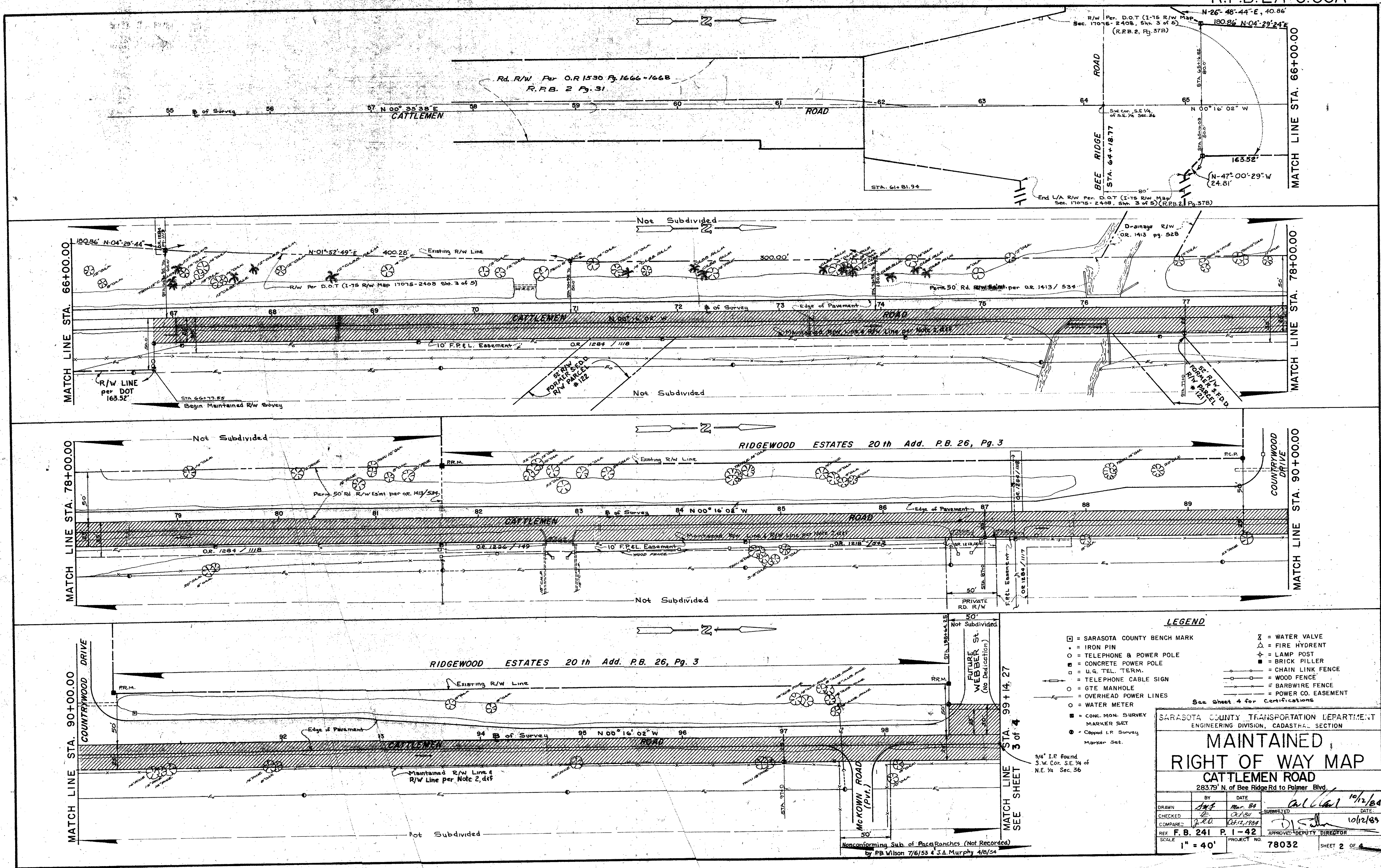
283.79' N. of Bee Ridge Road to Palmer Boulevard

BY	DATE	BY	DATE
DRAWN: <i>[Signature]</i>	<i>[Date]</i>	CHECKED: <i>[Signature]</i>	<i>[Date]</i>
COMPILED: <i>[Signature]</i>	<i>[Date]</i>	APPROVED: <i>[Signature]</i>	<i>[Date]</i>

REF: F.B. 241 P. 1-42 APPROVED DEPUTY DIRECTOR

SCALE: 1" = 400' PROJECT NO. 78032 SHEET 1 OF 4

PER RESOLUTION 84-344 (C.R. 1724 / DC 112)



**LEGEND**

- = SARASOTA COUNTY BENCH MARK
- = IRON PIN
- = TELEPHONE & POWER POLE
- = CONCRETE POWER POLE
- = U.G. TEL. TERM.
- = TELEPHONE CABLE SIGN
- = GTE MANHOLE
- = OVERHEAD POWER LINES
- = WATER METER
- = CONC. MON. SURVEY MARKER SET
- = Capped I.P. Survey Marker Set.
- ⊗ = WATER VALVE
- ⊕ = FIRE HYDRANT
- ⊕ = LAMP POST
- ⊕ = BRICK PILLER
- ⊕ = CONCRETE PILLER
- = CHAIN LINK FENCE
- = WOOD FENCE
- = BARBWIRE FENCE
- = POWER CO. EASEMENT

See Sheet 4 for Certifications

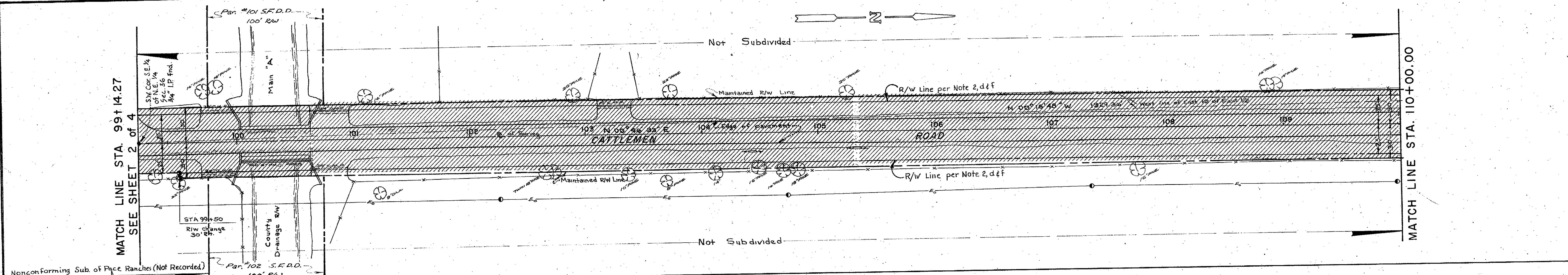
SARASOTA COUNTY TRANSPORTATION DEPARTMENT  
ENGINEERING DIVISION, CADASTRAL SECTION

**MAINTAINED RIGHT OF WAY MAP**  
CATTLEMEN ROAD  
283.79' N. of Bee Ridge Rd to Palmer Blvd.

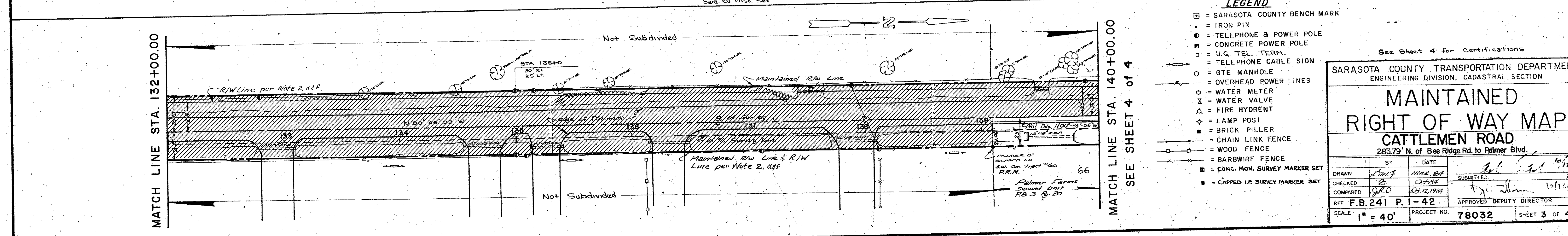
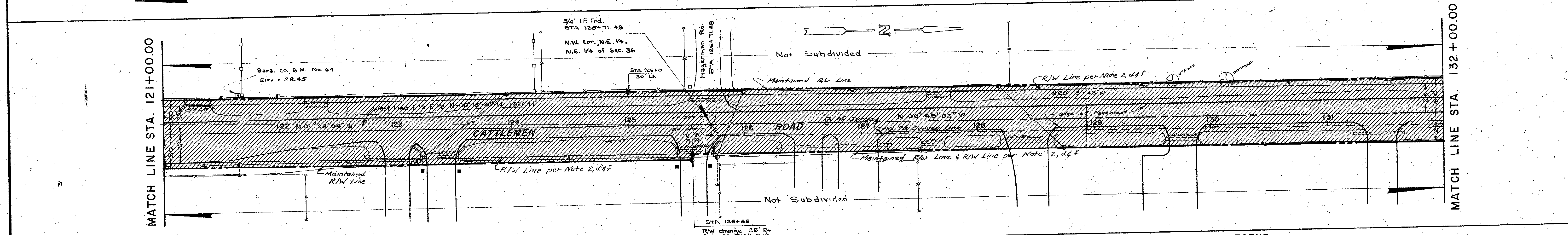
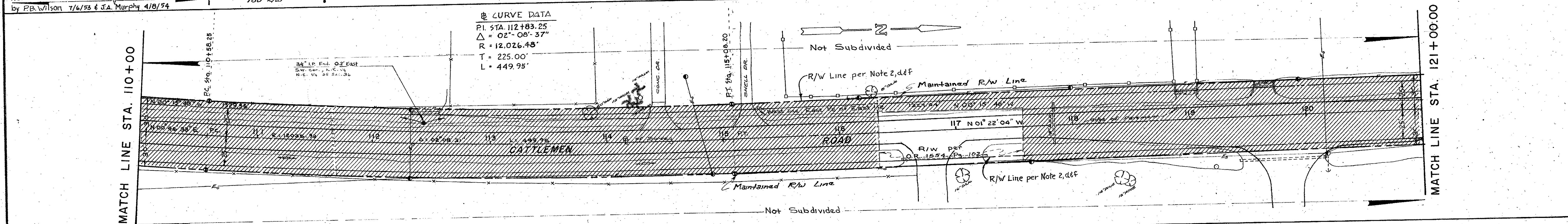
DRAWN	BY	DATE	SUPPLIED	DATE
	AW	Mar. 84		10/12/84
CHECKED	BY	DATE		
	J.R.U.	02/12/1984		10/12/84
REF. F.B. 241 P. 1-42	APPROVED DEPUTY DIRECTOR			
SCALE	PROJECT NO.	SHEET 2 OF 4		
1" = 40'	78032			

3/4" I.P. Found  
S.W. Cor. S.E. 1/4 of  
N.E. 1/4 Sec. 36

Nonconforming Sub. of Paces Ranches (Not Recorded)  
by PB Wilson 7/6/53 & J.A. Murphy 4/8/54



Nonconforming Sub. of Pice Ranches (Not Recorded)  
by P.B. Wilson 7/6/55 & J.A. Murphy 4/8/54



- LEGEND**
- = SARASOTA COUNTY BENCH MARK
  - = IRON PIN
  - ⊙ = TELEPHONE & POWER POLE
  - = CONCRETE POWER POLE
  - = U.G. TEL. TERM.
  - ⊕ = TELEPHONE CABLE SIGN
  - = GTE MANHOLE
  - = OVERHEAD POWER LINES
  - ⊙ = WATER METER
  - ⊕ = WATER VALVE
  - △ = FIRE HYDRANT
  - ⊕ = LAMP POST
  - = BRICK PILLER
  - = CHAIN LINK FENCE
  - = WOOD FENCE
  - = BARB WIRE FENCE
  - = CONC. MON. SURVEY MARKER SET
  - ⊙ = CAPPED I.P. SURVEY MARKER SET

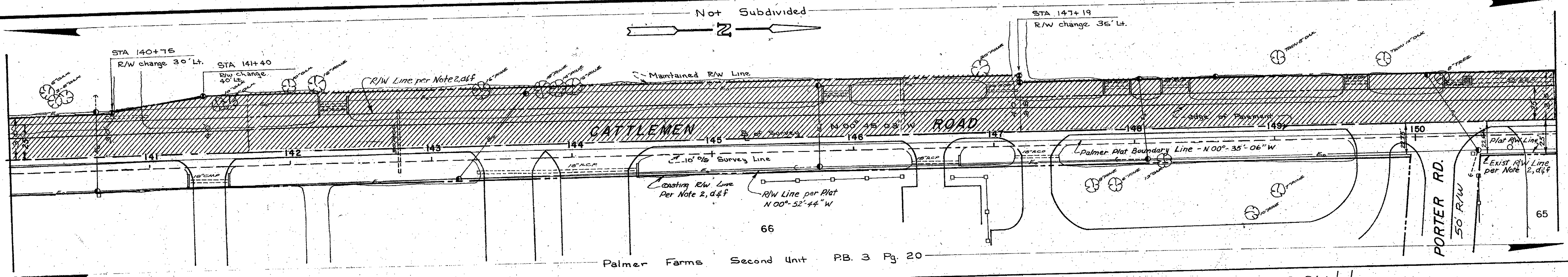
See Sheet 4 for Certifications

SARASOTA COUNTY TRANSPORTATION DEPARTMENT  
ENGINEERING DIVISION, CADASTRAL SECTION

**MAINTAINED  
RIGHT OF WAY MAP  
CATTLEMEN ROAD**  
283.79' N. of Bee Ridge Rd. to Palmer Blvd.

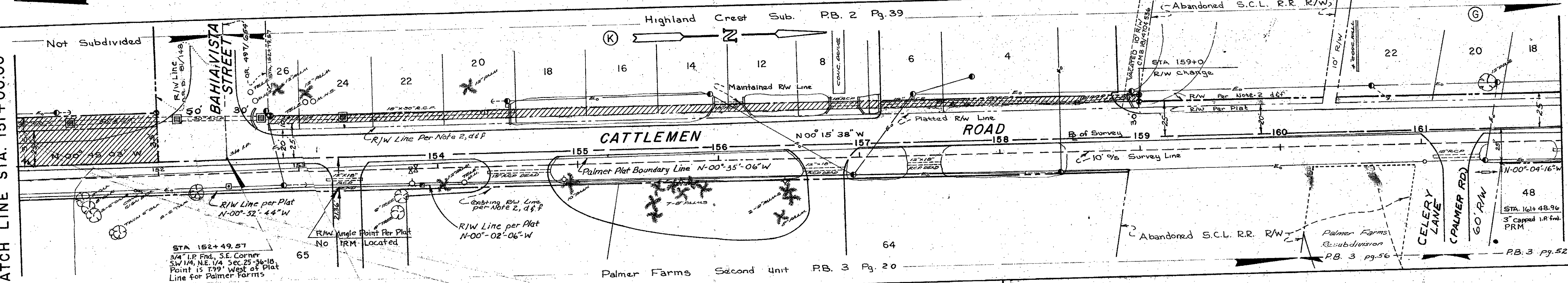
BY	DATE	SUBMITTED	DATE
CHKD	DATE	APPROVED	DATE
COMPARED	DATE	APPROVED DEPUTY DIRECTOR	
REF	F.B.241 P. - 42		
SCALE	1" = 40'	PROJECT NO.	78032
			SHEET 3 OF 4

MATCH LINE STA. 140+00.00  
SEE SHEET 3 of 4



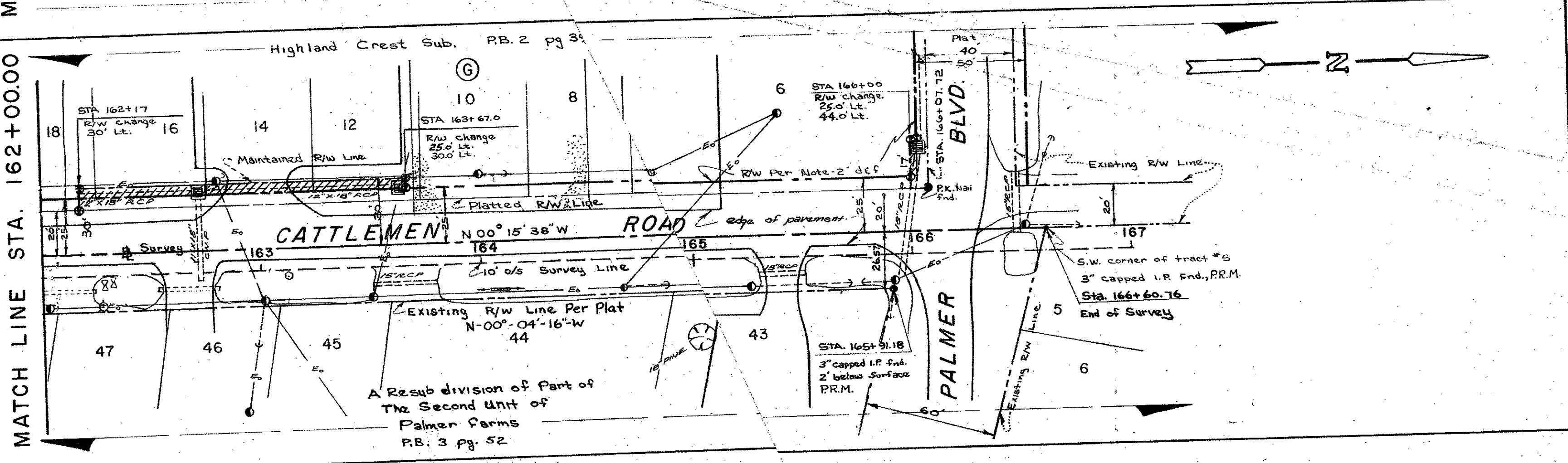
MATCH LINE STA. 151+00.00

MATCH LINE STA. 151+00.00



MATCH LINE STA. 162+00.00

MATCH LINE STA. 162+00.00



THIS IS TO CERTIFY THAT THIS MAP NUMBERED SHEETS FOUR(4) OF FOUR(4) CONSTITUTES THE OFFICIAL MAINTENANCE MAP SHOWING LOCATION AND SURVEY BY SARASOTA COUNTY, FLORIDA TRANSPORTATION DEPARTMENT FOR THE PORTION OF CATTLEMEN ROAD LYING SOUTH OF THE SOUTH R/W LINE OF PALMER BLVD AND NORTH OF A POINT LYING 283.79 NORTH OF THE CENTERLINE OF BEE RIDGE ROAD IN SARASOTA COUNTY, FLORIDA. THE PROPERTY SHOWN SHADED ON SAID MAP HAS BEEN VESTED IN SARASOTA COUNTY, FLORIDA PURSUANT TO THE PROVISIONS OF CHAPTER 95.36, FLORIDA STATUTES OF 1983.

THIS IS TO CERTIFY THAT THIS MAINTENANCE MAP WAS APPROVED BY RESOLUTION PASSED AND ADOPTED BY THE BOARD OF COUNTY COMMISSIONERS OF SARASOTA COUNTY, FLORIDA ON THE 23<sup>RD</sup> DAY OF OCTOBER A.D. 1984.

THIS IS TO CERTIFY THAT THE LIMITS OF THE ROADWAY OUTSIDE OF THE PLATTED RIGHT-OF-WAY AS SHOWN SHADED HEREON, HAS BEEN MAINTAINED CONTINUOUSLY FOR OVER FOUR YEARS WITHOUT INTERRUPTION.

BOARD OF COUNTY COMMISSIONERS  
OF SARASOTA COUNTY, FLORIDA  
BY: *[Signature]*  
CHAIRMAN

*[Signature]*  
SUPERINTENDENT  
ROAD & BRIDGE DIVISION

**SURVEYOR'S CERTIFICATE**

I HEREBY CERTIFY THAT THIS MAINTAINED R/W MAP REPRESENTS A BOUNDARY SURVEY OF THE ROAD AS SHOWN THAT THE SURVEY WAS RECENTLY PERFORMED UNDER MY DIRECTION AND THAT IT IS TRUE AND CORRECT TO THE BEST OF MY KNOWLEDGE AND BELIEF, AND THAT IT MEETS THE MINIMUM TECHNICAL STANDARDS FOR LAND SURVEYING IN THE STATE OF FLORIDA (CH. 21 HH-6, F.A.C.) EFFECTIVE SEPT. 1, 1981.  
DATE OF SURVEY: 1/15/79  
4/12/84

E. EMERSON COUNTY SURVEYOR  
PROFESSIONAL LAND SURVEYOR  
STATE OF FLORIDA  
1801 CATTLEMEN RD.  
SARASOTA, FL. 33582

**SURVEYOR'S NOTES:**

- Bearings shown hereon are based on an assumed meridian, Baseline of survey, Sta. 64+18.77 to Sta. 99+14.27 being N00°16'02" W
- There has been no Title search made to verify the following research:
  - Board of County Commission Minute Book-1 (DCMB-1), Page 404 of January 14, 1924; 16 individuals petitioned the Board to appoint a viewing committee to designate a route for a County Road connecting the Fruitville hard road (Palmer Blvd.) with the Bee Ridge hard road (Proctor Rd.).
  - March 30, 1925; a petition with 35 signatures, dated March 14, 1925, was filed with the Clerk and addressed to the Board requesting the same as above and further identifying the limits as connecting the present Fruitville hard road at or near the Baptist Church, with the Bee Ridge hard road at or near Tom Albritton's grove, (Not mentioned in the B.C.C. Minutes).
  - May 4, 1925; Board ordered the posting of a Public Notice advising that at the next regular meeting on Monday, June 1, 1925, they would declare the following a County road:  
  
Beginning at the end of the present Fruitville Asphalt Hard Road at the SW corner of the NW 1/4 of NE 1/4 of Section 25, Tp. 36, Rge. 18, Thence East 1320 feet to the SW corner of NE 1/4 of NE 1/4 of Section 25, Thence South 1 3/4 miles to the SW corner of the SE 1/4 of the SE 1/4 of Section 36, Tp. 36, Rge. 18, Thence South 1 mile to the SW corner of SE 1/4 of Section 1, Tp. 37, Rge. 18 East.  
(Not mentioned in B.C.C. Minutes)
  - B.C.C.M.B. 2, Page 22 of May 4, 1925; Resolution passed calling for an election on June 16, 1925, for County Road Bonds on the construction of 33 County Roads, Fruitville-Madison (Cattlemen) Road being Road No. 16 at cost of \$60,000.00, with a R/W width of 50 feet.
  - May 6, 1925; Pioneers appointed to mark out the road filed their report with the Clerk and Board declaring the best route as described above and recommended it be established (Not in B.C.C. Minutes).
  - Undated construction plans for Road No. 16 were prepared by the County Engineer's office showing a 50-foot R/W (the originals are still on file).
  - B.C.C.M.B. 2, Page 29 of June 20, 1925; canvassed Bond election results with Road No. 16 getting 287 votes FOR and 40 AGAINST.
  - B.C.C.M.B. 2, Page 37 of July 18, 1925; authorized Bond issuance.
  - B.C.C.M.B. 2, Page 55 of September 2, 1925; called for sealed bids on October 12th for clearing, grubbing and drainage on Road No. 16.
  - B.C.C.M.B. 2, Page 301 of March 7, 1927; contract for hard surfacing Road No. 16 awarded to W.J. Bryson for their \$7,573.50 bid.
- Based on the foregoing, an existing 50' R/W has been shown.

**LEGEND**

- = SARASOTA COUNTY BENCH MARK
- = IRON PIN
- ⊙ = TELEPHONE & POWER POLE
- = CONCRETE POWER POLE
- ⊠ = U.S. TEL. TERM.
- = TELEPHONE CABLE SIGN
- = GTE MANHOLE
- = OVERHEAD POWER LINES
- = WATER METER
- ⊗ = WATER VALVE
- ⊙ = FIRE HYDRANT
- = LAMP POST
- = BRICK PILLER
- = CHAIN LINK FENCE
- = WOOD FENCE
- = BARB WIRE FENCE
- = CONC. MON. SURVEY MARKER SET
- ⊙ = CAPPED IRON ROD, SURVEY MARKER SET

ACCEPTED FOR FILES AND RECORDED IN THE PUBLIC RECORDS OF SARASOTA COUNTY, FLORIDA THIS 23<sup>RD</sup> DAY OF OCTOBER A.D. 1984 IN ROAD PLAT BOOK 2 PAGE 32

*[Signature]*  
CLERK OF THE CIRCUIT COURT  
SARASOTA COUNTY, FLORIDA

ATTEST:  
R.H. HACKNEY JR., CLERK OF THE CIRCUIT COURT  
AND EX-OFFICIO CLERK OF THE BOARD OF  
COUNTY COMMISSIONERS OF SARASOTA COUNTY,  
FLORIDA.

BY: *[Signature]*  
DEPUTY CLERK

SARASOTA COUNTY TRANSPORTATION DEPARTMENT  
ENGINEERING DIVISION, CADASTRAL SECTION

**MAINTAINED  
RIGHT OF WAY MAP  
CATTLEMEN ROAD**  
283.79' N. of Bee Ridge Road to Palmer Blvd.

DRAWN:	BY:	DATE:	SUBMITTED:
<i>[Signature]</i>	<i>[Signature]</i>	MAR. 84	<i>[Signature]</i>
CHECKED:	BY:	DATE:	
<i>[Signature]</i>	<i>[Signature]</i>	OCT. 84	
COMPARED:	BY:	DATE:	
<i>[Signature]</i>	<i>[Signature]</i>	OCT. 16, 1984	
REF. F.B. 241 P. 1-42	APPROVED:	DEPUTY DIRECTOR	
SCALE: 1" = 40'	PROJECT NO:	78032	SHEET 4 OF 4