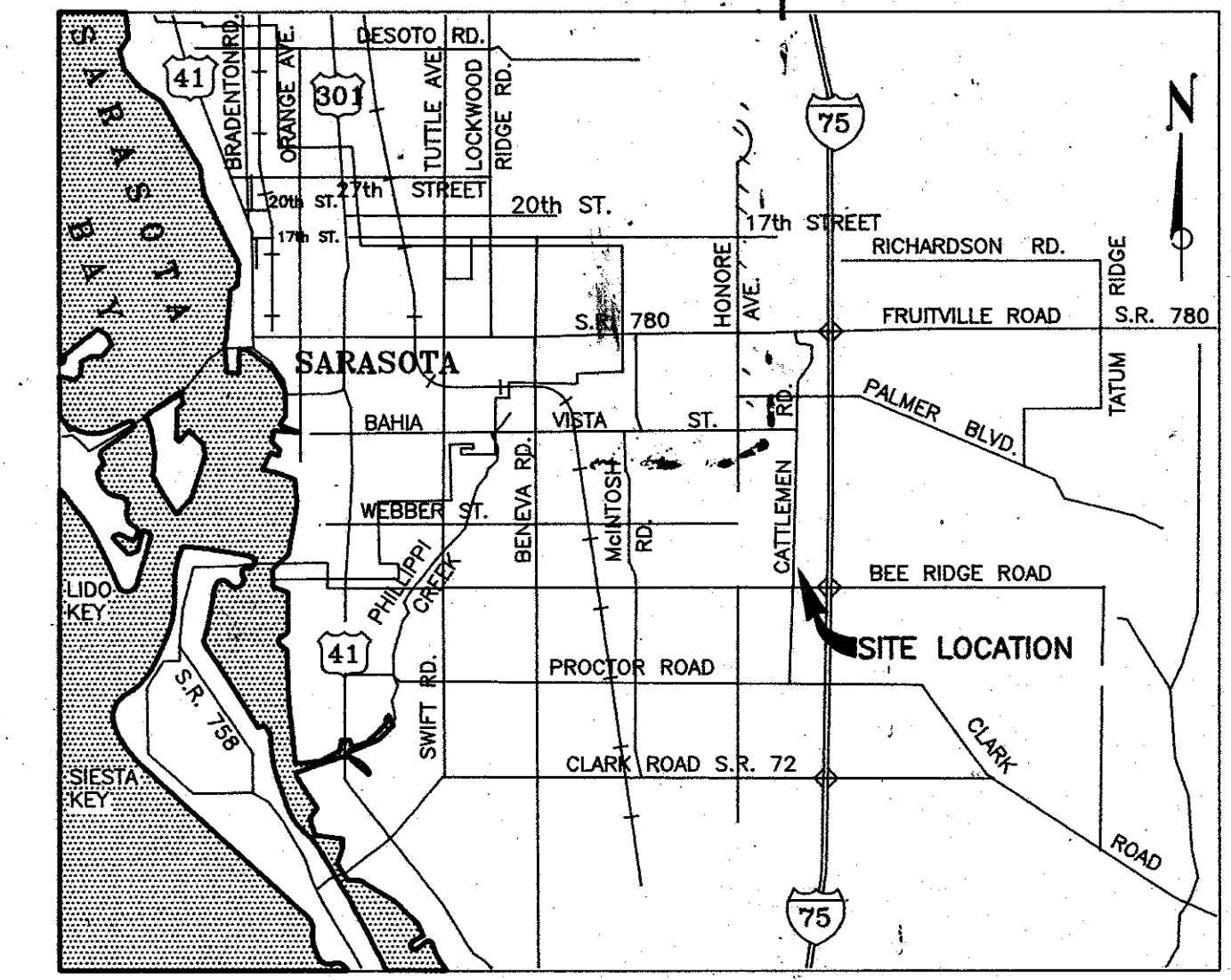


FILED FOR RECORD
1999 DEC 29 AM 7:51
KAREN E. RUSHING
CLERK OF CIRCUIT COURT
SARASOTA COUNTY, FL



LOCATION MAP
N.T.S.

THIS IS TO CERTIFY THAT THE NUMBERED SHEETS TWO (2) OF TWO (2) CONSTITUTES THE OFFICIAL MAINTENANCE MAP SHOWING THE LOCATION AND SURVEY FOR THE SARASOTA COUNTY, FLORIDA, TRANSPORTATION DEPARTMENT FOR CATTLEMEN ROAD LYING BETWEEN BEE RIDGE ROAD TO WEBBER STREET, BEING IN SECTION 36, TOWNSHIP 36 SOUTH, RANGE 18 EAST, SARASOTA COUNTY, FLORIDA PURSUANT TO THE PROVISIONS OF CHAPTER 95.361, FLORIDA STATUTES OF 1991.

FILED FOR RECORD IN ROAD PLAT BOOK 4 AT PAGE 30-30A OF THE PUBLIC RECORDS OF SARASOTA COUNTY, FLORIDA, THIS DAY OF 27 1999

KAREN E. RUSHING
CLERK OF THE CIRCUIT COURT
SARASOTA COUNTY, FLORIDA
BY: *Charles M. Hamel*
DEPUTY CLERK

THIS IS TO CERTIFY THAT THIS MAINTAINED MAP WAS APPROVED BY RESOLUTION NO. 49-305 PASSED AND ADOPTED BY THE BOARD OF COUNTY COMMISSIONERS OF SARASOTA COUNTY, FLORIDA ON 12-10-93 A.D. 1999
Sharon Shattuck
CHAIRMAN

ATTEST
KAREN E. RUSHING, CLERK OF THE CIRCUIT COURT AND OFFICE CLERK OF THE BOARD OF COUNTY COMMISSIONERS OF SARASOTA COUNTY, FLORIDA BY: *Sharon Shattuck*

DEPUTY CLERK *Sharon Shattuck*
THIS IS TO CERTIFY THAT THE LIMITS OF THE ROADWAY OUTSIDE OF PLATTED RIGHT-OF-WAY AS SHOWN CROSS-HATCHED HEREON, HAS BEEN MAINTAINED CONTINUOUSLY FOR OVER FOUR (4) YEARS WITHOUT INTERRUPTION.

Allen Blackwood
ALLEN BLACKWOOD
ROAD & BRIDGE
OPERATIONS MANAGER

SURVEYORS NOTES

1. BEARINGS ARE BASED ON MAINTAINED RIGHT OF WAY MAP RECORDED IN R.P.B. 2, PAGE 56, PUBLIC RECORDS OF SARASOTA COUNTY, FLORIDA
2. 5/8" IRON ROD WITH ALUMINUM CAP STAMPED "SARASOTA COUNTY" W/R/W MARKER L.B. # 128" WERE SET ON THE MAINTAINED R/W LINE AT ALL R/W CHANGES AND INTERMEDIATE POINTS ON LINE NO GREATER THAN 1300' APART.

SURVEYORS CERTIFICATE

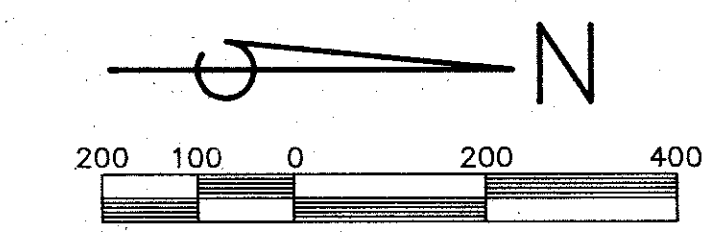
I HEREBY CERTIFY THAT THIS MAINTAINED RIGHT OF WAY MAP REPRESENTS A SURVEY OF THE ROAD AS SHOWN, THAT IT IS TRUE TO THE BEST OF MY KNOWLEDGE AND BELIEF, AND THAT IT MEETS THE MINIMUM TECHNICAL STANDARDS FOR LAND SURVEYING IN THE STATE OF FLORIDA (CHAPTER 6-1-G17, F.A.C.)

DATE OF SURVEY 12-10-93
DATE MONUMENTS SET: 11-11-93

Mark E. Bassett
MARK E. BASSETT
PROFESSIONAL LAND SURVEYOR No. 4394
STATE OF FLORIDA

3/9/94
DATE

BISHOP & ASSOCIATES
CONSULTING ENGINEERS • SURVEYORS
78 SARASOTA CENTER BLVD.
SARASOTA, FLORIDA 34240
813/371-6362



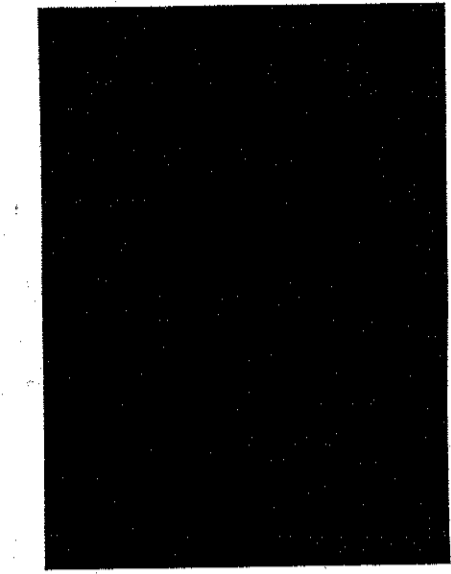
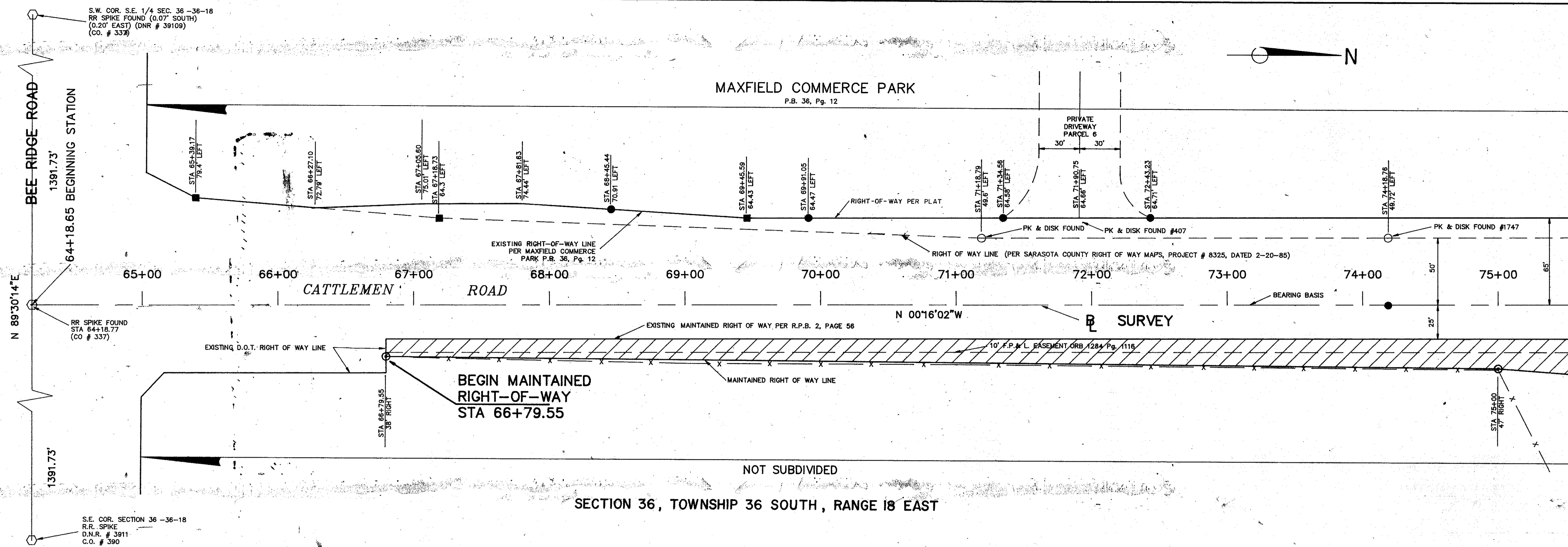
ABBREVIATION LEGEND

- COR. - CORNER
- STA. - STATION
- R.P.B. - ROAD PLAT BOOK
- R.R. - RAILROAD
- CO. - COUNTY
- P.B. - PLAT BOOK
- DNR - DEPARTMENT OF NATURAL RESOURCES
- SEC. - SECTION
- C.M.F. - CONCRETE MONUMENT FOUND
- O.R. - OFFICIAL RECORDS
- TWP. - TOWNSHIP
- RNG. - RANGE

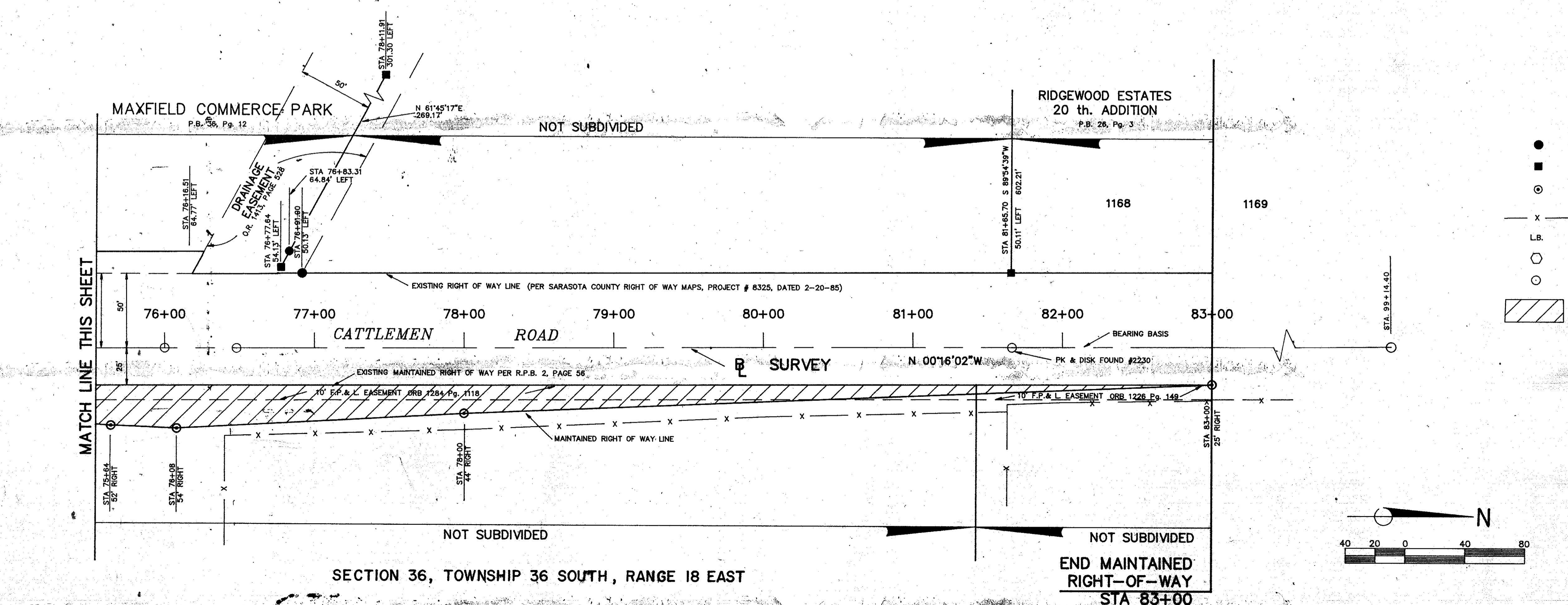
KEY MAP

SARASOTA COUNTY TRANSPORTATION DEPARTMENT ENGINEERING DIVISION, SURVEY - MAPPING SECTION			
MAINTAINED RIGHT OF WAY MAP			
CATTLEMEN ROAD BEE RIDGE ROAD TO WEBBER STREET			
BY	DATE	DATE	
DRAWN D.B.	12-10-93	3-11-94	
CHECKED M.E.B.	12-10-93	DATE	
COMPALED D.R.H.	12-10-93	DATE	
REF. F.B. 191, PAGE 32	F.B. 214, PAGE 65	DATE	
SCALE 1" = 200'		PROJECT NO. SRQ-04-04	SHEET 1 OF 2

B.C.C. RESO. 99-303 O.R.I. 1999/67052



FILED FOR RECORD
1399 DEC 29 AM 7:51
CLERK OF CIRCUIT COURT
SARASOTA COUNTY, FL



- LEGEND**
- CAPPED IRON ROD FOUND
 - MONUMENT FOUND
 - CAPPED IRON ROD SET MARKED SARASOTA COUNTY L.B. 128
 - X — FENCE
 - LB. LICENSED BUSINESS
 - R/R SPIKE FOUND
 - PK NAIL & DISK FOUND
 - ▨ MAINTAINED RIGHT OF WAY AS FIELD LOCATED

SARASOTA COUNTY TRANSPORTATION DEPARTMENT ENGINEERING DIVISION, SURVEY - MAPPING SECTION			
MAINTAINED RIGHT OF WAY MAP			
CATTLEMEN ROAD BEE RIDGE ROAD TO WEBBER STREET			
BY	DATE		
DRAWN D.B.	12-10-93	3-11-99	
CHECKED M.E.B.	12-10-93	DATE	
COMPARED D.R.H.	12-10-93	DATE	
REF. F.B. 191, PAGE 32 F.B. 214, PAGE 65		DATE	
SCALE 1" = 40'	PROJECT NO. SRQ-04-04	SHEET 2 OF 2	