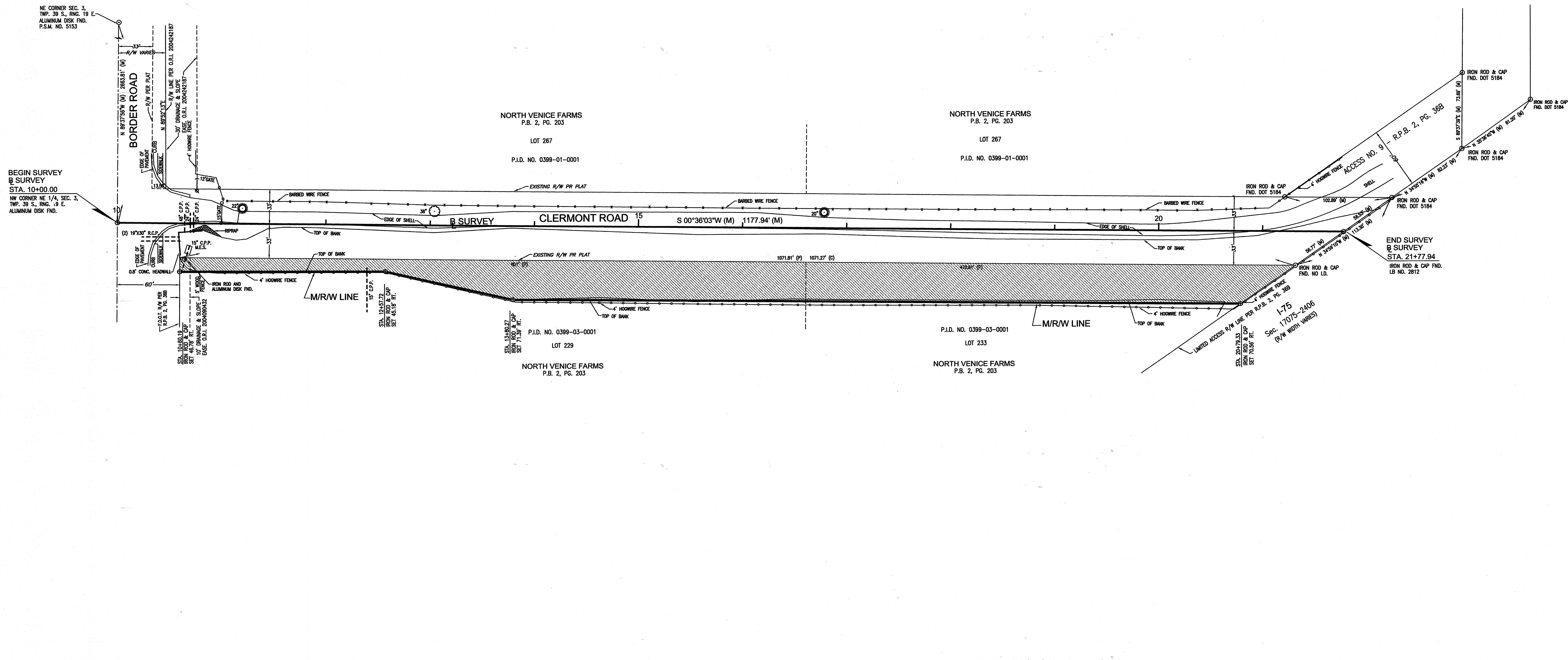


FILED FOR RECORD
2008 APR 18 PM 4:45
KAREN E. RUSHING
CLERK OF CIRCUIT COURT
SARASOTA COUNTY, FL



THIS IS TO CERTIFY THAT THE NUMBERED SHEET ONE (1) OF ONE (1) CONSTITUTES THE OFFICIAL MAINTENANCE MAP SHOWING THE LOCATION AND SURVEY BY SARASOTA COUNTY, FLORIDA, DEVELOPMENT SERVICES BUSINESS CENTER FOR CLERMONT ROAD, BORDER ROAD SOUTH 2178 FEET, BEING IN SECTION 3, TOWNSHIP 39 SOUTH, RANGE 19 EAST, FLORIDA PURSUANT TO THE PROVISIONS OF CHAPTER 95.361, FLORIDA STATUTES OF 2007.

FILED OR RECORD IN ROAD PLAT BOOK 4 AT PAGE 63 OF THE PUBLIC RECORDS OF SARASOTA COUNTY FLORIDA, THIS 18TH DAY OF APRIL, A.D., 2008

[Signature]
LIN KURANT, MANAGER
REAL PROPERTY
[Signature]
JAMES E. HARRIOTT JR., P.E.
COUNTY ENGINEER

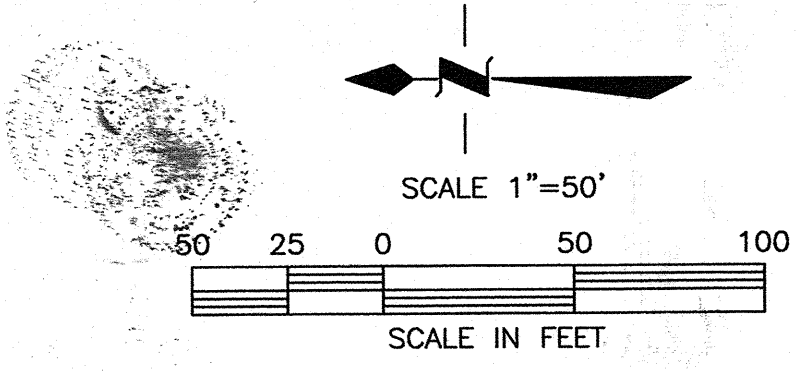
KAREN E. RUSHING
CLERK OF THE CIRCUIT COURT
SARASOTA COUNTY, FLORIDA
BY: *[Signature]*
DEPUTY CLERK

THIS IS TO CERTIFY THAT THIS MAINTAINED MAP WAS APPROVED BY RESOLUTION NO. 2008-061 PASSED AND ADOPTED BY THE BOARD OF COUNTY COMMISSIONERS OF SARASOTA COUNTY, FLORIDA, ON THE 8th DAY OF APRIL, A.D., 2008.

[Signature]
CHAIRMAN
ATTEST
KAREN E. RUSHING, CLERK OF THE CIRCUIT COURT AND EX-OFFICIO CLERK OF THE BOARD OF COUNTY COMMISSIONERS OF SARASOTA COUNTY, FLORIDA BY:

[Signature]
DEPUTY CLERK
THIS IS TO CERTIFY THAT THE LIMITS OF THE ROADWAY OUTSIDE OF PLATTED RIGHT-OF-WAY AS SHOWN CROSS-HATCHED HEREON, HAS BEEN MAINTAINED CONTINUOUSLY FOR OVER SEVEN (7) YEARS WITHOUT INTERRUPTION.
[Signature] 4-20-07
GARY SPRAGGINS, MANAGER
ROAD & BRIDGE

- SURVEYOR'S NOTES**
- BEARINGS SHOWN HEREON ARE BASED ON ASSUMED DATUM. THE NORTH LINE OF THE NORTHEAST QUARTER (1/4) OF SECTION 3, TOWNSHIP 39 SOUTH, RANGE 19 EAST, SARASOTA COUNTY, FLORIDA, BEING N 89°37'56"W.
 - THIS MAP WAS PREPARED WITHOUT THE BENEFIT OF AN ABSTRACT OF TITLE OR AN ATTORNEY'S OPINION OF TITLE. THEREFORE, ANY DEED OVERLAP OR HATUS OR ANY RECORDED OR UNRECORDED RIGHTS-OF-WAY AND OR EASEMENTS MAY NOT BE SHOWN.
 - IMPROVEMENTS SUCH AS, BUT NOT LIMITED TO, UNDERGROUND UTILITIES, LANDSCAPE FEATURES, ETC., HAVE NOT BEEN LOCATED EXCEPT AS SHOWN.
 - THIS IS NOT A BOUNDARY SURVEY.
 - A CHANGE OR JOG ON THE MAINTAINED RIGHT-OF-WAY LINE IS NOT NECESSARILY LOCATED AT AN INTERSECTING PROPERTY LINE.



ANY REPRODUCTION OF THIS MAP SHALL NOT BE "CERTIFIED A TRUE COPY" WITHOUT MY SIGNATURE AND DATE THEREOF IN INK, TOGETHER WITH MY EMBOSSED SEAL ON SAID COPY.
I HEREBY CERTIFY THAT THIS MAP OF SURVEY REPRESENTS A MAINTAINED RIGHT-OF-WAY MAP OF THE LANDS AS SHOWN AND DESCRIBED HEREON, THAT THE SURVEY WAS RECENTLY PERFORMED UNDER MY DIRECTION, THAT IT IS TRUE AND CORRECT TO THE BEST OF MY KNOWLEDGE AND BELIEF AND THAT THE SURVEY MEETS THE MINIMUM TECHNICAL STANDARDS AS SET FORTH BY THE FLORIDA BOARD OF PROFESSIONAL LAND SURVEYORS IN CHAPTER 61G17, FLORIDA ADMINISTRATIVE CODE PURSUANT TO SECTION 472.027, FLORIDA STATUTES.
[Signature] 4-11-07
TERI S. OWEN, Professional Surveyor and Mapper No. 5928

ABBREVIATION LEGEND

P.B. = PLAT BOOK	P.I.D. = PROPERTY IDENTIFICATION NO. = NUMBER	M&D = MAIL AND DISK SET	CM = CONCRETE MONUMENT FOUND	UT = UTILITY POLE
CONC. = CONCRETE	R.C.P. = REINFORCED CONCRETE PIPE	IP = IRON PIPE	IR = IRON ROD & CAP FOUND	V = VALVE
MON. = MONUMENT	C.M.P. = CORRUGATED METAL PIPE	IR = IRON ROD	IR = IRON ROD FOUND	FH = FIRE HYDRANT
R/W = RIGHT-OF-WAY	D.S. = TOP OF SLOPE	DR = DRAIN	IR & CAP SET	ST = SERVICE METER
FND. = FOUND	T.O.B. = TOP OF BANK	UG = UNDERGROUND DRAIN = DRAIN	M&D FOUND	SB = SERVICE BOX
PT. = POINT	O.T. = OPEN TROUGH	U = UNDERGROUND	X = CHISEL CUT FOUND	CB = CONTROL BOX
M = MEASURED	FL = FLORIDA POWER & LIGHT	EX = EXHUMED	BM = BEACH MARK FOUND	TR = TRANSFORMER
PG. = PAGE	R.P.B. = ROAD PLAT BOOK	VER. = VERIZON	BM FOUND	
O.R.B. = OFFICIAL RECORDS BOOK	CATV = CABLE TELEVISION	M/R/W = MAINTAINED RIGHT-OF-WAY		

SYMBOL LEGEND

○ = MAIL AND DISK SET	○ = UTILITY POLE	○ = VALVE
■ = CONCRETE MONUMENT FOUND	○ = LIGHT POLE	○ = FIRE HYDRANT
□ = IRON ROD & CAP FOUND	○ = GUY WIRE	○ = METER
○ = IRON ROD FOUND	○ = SERVICE MANHOLE	○ = CLEANOUT
○ = IRON ROD AND CAP SET	○ = SERVICE BOX	○ = CONTROL BOX
○ = MAIL & DISK FOUND	○ = CONTROL BOX	○ = TRANSFORMER
○ = CHISEL CUT FOUND	○ = TRANSFORMER	
○ = BEACH MARK FOUND		
○ = IRON ROD & RED CAP SET #5928		

MAINTAINED RIGHT-OF-WAY MAP
CLERMONT ROAD
(BORDER ROAD SOUTH 2178')

PROJ. NO.: 07008	DWG DATE: 3-14-07	SHEET NO. 1
SEC: 3 TWP: 39 S. RGE: 19 E.	FIELD DATE: 4-6-07	OF 1
FIELD BOOK 496, PAGE 36	DRAWN BY: TSO	
I:\SURVEY\CLERMONT\PS_CLERMONT.DWG	CHECKED BY: WP	

SARASOTA COUNTY SURVEY-MAPPING
PLANNING & DEVELOPMENT SERVICES BUSINESS CENTER
1301 CATTLEMEN ROAD BLDG. "E" SARASOTA, FLORIDA 34232
941/861-6802 • 941/861-6865 • FAX 941/861-6157

B.C.C. RESO. NO. 2008-061 O.R.I. 2008047803